



DIGITAL INDUSTRIES SOFTWARE

Teamcenter Change Management

Execute change quickly, accurately and comprehensively

Benefits

- Reduce risk with a complete understanding of the impact of change
- Lower change costs, risks and cycle times
- Ensure adherence to standards and business rules
- Spend less time analyzing, administering and implementing change with integrated PLM
- Optimize change processes and support audits with complete change traceability

Summary

Change management originated in document control procedures. Engineering departments owned all the drawings that defined a product and everything related to them. They managed and executed change. Today, the scope of change management is broader and much more complex. Increasingly advanced products that span multiple domains require collaboration and coordination far beyond the scope of engineering. Global organizations and supply chains make collaboration more and more difficult. Without visibility to who is impacted by a change, their resource loads, what projects are already in process, and other information, organizations implement too many changes at once, creating bottlenecks and delays.

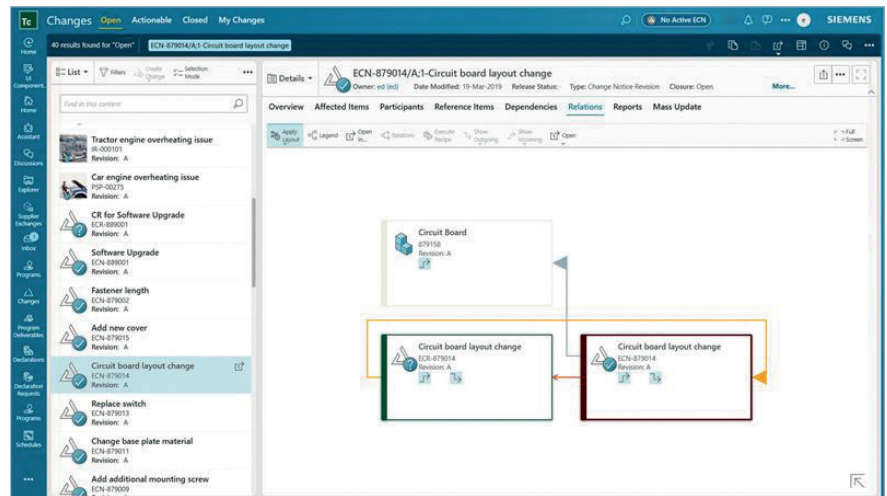
Effective change management is critical to your success. You must be able not only to track and address issues and required changes, but also to meet the demand for new product offerings. With the product and process change management capabilities in Teamcenter® software, which is part of the Siemens

SIEMENS

[siemens.com/teamcenter](https://www.siemens.com/teamcenter)

Features

- Easy to participate in change process with minimal or no training
- Configurable, rules-based change management and comprehensive impact analysis
- BOM modification tracking with red lines to highlight changes
- End-to-end change execution with standardized, flexible, closed-loop processes
- Concurrent change merging
- Schedule Manager integrations to manage complex change



Xcelerator business platform of software, hardware and services, you can effectively manage the evolution of your products, issues and improvements, while implementing the changes quickly, accurately and comprehensively to better respond to your customers' needs.

Comprehensive impact analysis

One of the most critical elements to effective change management is the ability to clearly understand the impact of a proposed change. If you make a change to a component, what are all the parts, assemblies, documents and products that could be impacted? Perhaps the change requires only a minor design modification, but does it require re-tooling in manufacturing or changing process steps? Do you have the resources to make this change? What would the impact be on other projects already in progress?

The screenshot displays the Siemens Teamcenter Change Management interface for a change request titled '033481/B:1-SmartPhone hardware'. The main area shows a table of affected items, including 'SmartPhone hardware', 'Screen Display x1', 'Lightning to USB cable x1', 'Li Battery 2716mAh x1', 'Audio and output x1', 'Camera x2', 'SIM card_CH x1', 'Fingerprint sensor x1', 'Barometer x1', and 'Lightning to C cable'. The table columns include ID, Revision, Revision Name, Find Number, Quantity, Unit of Measure, Release Status, Date Released, Owner, Group ID, Last Modified, and Parent. Below the table, there is a 'Details' section for the 'Barometer x1' item, showing its properties and a preview image of a smartphone screen.

Element	ID	Rev.	Revision Name	Find Number	Quantity	Unit of Measure	Release Status	Date Released	Owner	Group ID	Last Modified	Parent
SmartPhone hardware	033481	B	SmartPhone hardware						charles (charles)	AWA Engineers...	charles (charles)	
Screen Display x1	033482	A	Screen Display	10	1	each	TCM Released	05-Nov-2024	charles (charles)	AWA Engineers...	charles (charles)	033481/RB:1-S...
Lightning to USB cable x1	033483	A	Lightning to USB cable	20	1	each	TCM Released	05-Nov-2024	charles (charles)	AWA Engineers...	charles (charles)	033481/RB:1-S...
Li Battery 2716mAh x1	033484	A	Li Battery 2716mAh	30	1	each	TCM Released	05-Nov-2024	charles (charles)	AWA Engineers...	charles (charles)	033481/RB:1-S...
Audio and output x1	033485	A	Audio and output	45 49	1	each	TCM Released	05-Nov-2024	charles (charles)	AWA Engineers...	charles (charles)	033481/RB:1-S...
Camera x2	033486	A	Camera	50	2	each	TCM Released	05-Nov-2024	charles (charles)	AWA Engineers...	charles (charles)	033481/RB:1-S...
SIM card_CH x1	033487	A	SIM card_CH SIM card	60	1	each	TCM Released	05-Nov-2024	charles (charles)	AWA Engineers...	charles (charles)	033481/RB:1-S...
Fingerprint sensor x1	033488	A	Fingerprint sensor	70	1	each	TCM Released	05-Nov-2024	charles (charles)	AWA Engineers...	charles (charles)	033481/RB:1-S...
Barometer x1	033489	A	Barometer	80	1	each	TCM Released	05-Nov-2024	charles (charles)	AWA Engineers...	charles (charles)	033481/RB:1-S...
Lightning to C cable	033491	A	Lightning to C cable	90	1	each	TCM Released	05-Nov-2024	charles (charles)	AWA Engineers...	charles (charles)	033481/RB:1-S...

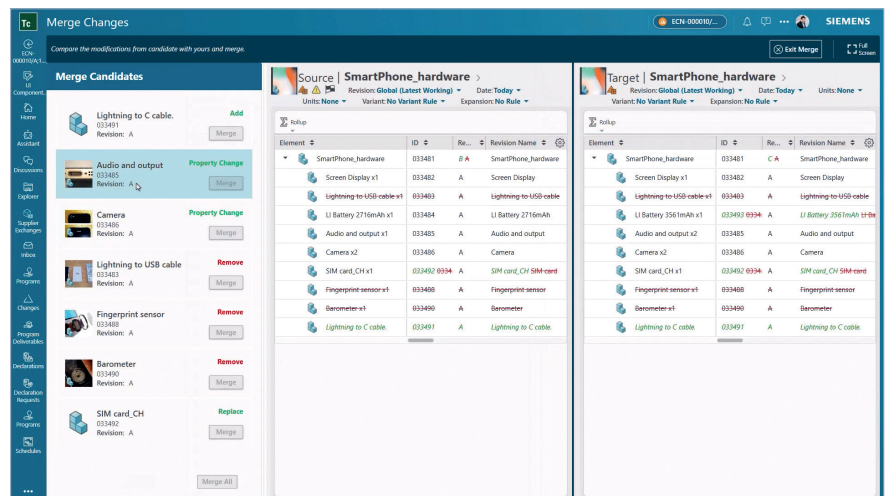
With the power of product lifecycle management (PLM) at your fingertips, you have complete visibility to impacted data, people and processes. You can see every instance where a part is used and all information related to that part to clearly understand what data is impacted. Standardized change processes help you incorporate the right stakeholders to clearly identify impacted domains and processes. You can view resource loads and reports to help ensure that appropriate changes can actually be executed in the desired time frame. You can leverage all this data, as well as the history of previous changes or issues, to help identify whether a change is necessary, dramatically reducing the time you spend on changes that never make it to production. When you use product change management in Teamcenter, you can understand the complete impact of change, you can make accurate decisions about cost and timing commitments.

Standardized change

Teamcenter enables you to standardize your change processes – no matter how simple or complex. Teamcenter fully supports the rigor of formal Configuration Management (CMII discipline) change management, and also enables you to define your own standardized change processes. Standardized processes help you synchronize change activities across complex assemblies and organizations, while maintaining traceability for audit and reporting purposes. You can drive consistency with standard processes to make change management more predictable and streamlined.

Right-sized change

Not all changes are the same. You may have simple changes that require little effort or cost, such as an update to a title on a drawing. On the other hand, you may have more complex changes that require design modifications, re-tooling for manufacturing, and updates to service manuals.



Applying the same level of rigor and control across both examples may not make sense. With Teamcenter, you have the flexibility to manage and execute the right change process for the job, from expediting a simple change to formal control of a complex change in one single integrated PLM environment.

End-to-end execution

With product change management in Teamcenter, you can manage the complete scope of change across all impacted domains, timelines and resources. From managing and verifying drivers of change, to identifying and planning solutions, to guiding the implementation and incorporation of change, you can orchestrate the complete change process. Powerful workflow and project management capabilities simplify the coordination and collaboration of people inside your company, as well as your partners and suppliers. You can ensure that everyone works with the right data and at the right time to implement change quickly, accurately and comprehensively. Consistent closed-loop processes provide feedback to help optimize change processes, and support confirmation of all change tasks with complete traceability for audit history and tracking.

Siemens Digital Industries Software
[siemens.com/software](https://www.siemens.com/software)

Americas
 1 800 498 5351

Europe
 00 800 70002222

Asia-Pacific
 001 800 03061910

For additional numbers, click [here](#).

© 2025 Siemens. A list of relevant Siemens trademarks can be found [here](#). Other trademarks belong to their respective owners.

3320-D7 2/25 H