



Get a technological edge for your business

Digital Experience & Application Center

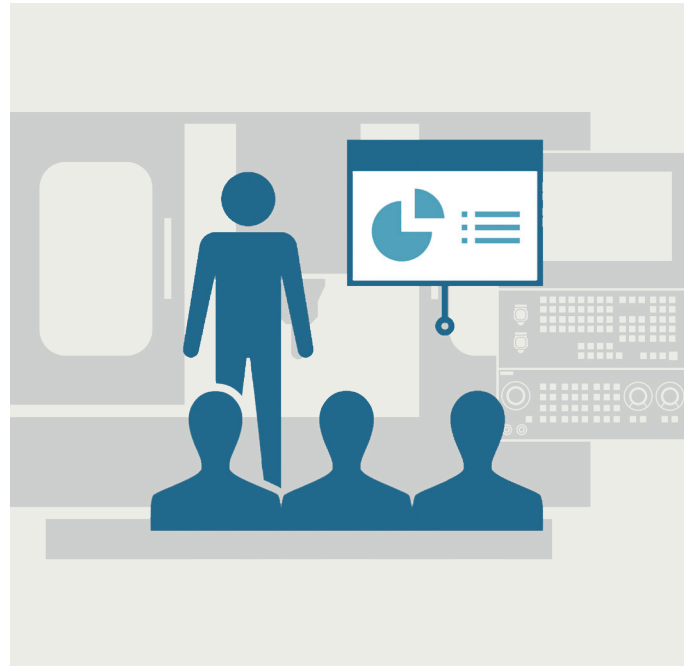
[siemens.co.in/DEX](https://www.siemens.co.in/DEX)

SIEMENS

Digital Experience & Application Center

Siemens has setup a Digital Experience & Application Center (DEX) in the hub of Indian machine tool industry. Located in Peenya, Bengaluru it is a one stop shop to experience Digitalization solutions for the entire value chain - from product development and production planning to real production and digital services.

At this one of its kind experience center, a wide range of solutions showcasing concepts of Digital Twin, Virtual machining, Virtual commissioning, Machine analytics, Cloud solutions along with a full-fledged working shop-floor integrated with Robots, CNC machine tools, Equator measuring system, Probe solutions etc., bring you closer to the world of Digitalization. Special training and information on SINUMERIK operation, Maintenance and Digitalization solutions are also available at DEX.





Key features

- Digitalization solutions for the entire value chain - from product development to digital services
- Insights Hub - Securely connect machines, products, plants and systems on IoT platform
- Optimize MyMachining (OMM) to increase productivity
- Insights Hub – Production transparency & OEE monitoring
- Live demo – Digital Twin and Digitalization solutions
- Live camera feed of machining process
- Complete SINUMERIK CNC solution for operation & programming training
- SINUTRAIN – Control identical software, a perfect solution for job planning & training
- Run My Virtual Machine (RMVM) - Digital Twin



Highlights

- Highly qualified trainers with industry experience
- Know-how to improve productivity with SINUMERIK
- Customized training material exclusively developed for all training courses
- Collaborative environment for product development
- Virtual machining integrated with CAD CAM CNC process
- Optimization of program & output visualization
- Siemens certificate upon successful training completion
- Siemens DEX facility spread over an area of 9000 sq.ft.



Benefits

- Open platform framework to empower end-to-end business processes across the extended Digital Enterprise
- Production transparency and analysis following Industry 4.0 solutions
- Integrated innovation platform helping to turn vision into digital realities
- Shorten time-to-market and improved quality, flexibility and performance



Events

- Live virtual demonstration of products and processes with Digital Twin & Digitalization solutions
- SINUMERIK CNC operation & programming trainings
- Commissioning and maintenance training
- End-user seminars
- Technology days
- One-day orientation program for students
- Evening training classes for students and industry professionals

Your bridge to success with SINUMERIK



Course Pre-requisites

Beginner Training

- Minimum 1 year work experience in CNC machines
- OR
- Minimum educational qualification of ITI/ Diploma/ Engineering with basic CNC machine working exposure

Advanced Training

- Minimum 2 to 3 years of work experience on CNC machines
- OR
- Trained with **Level 1** (Beginner level) training program at Siemens DEX

Expert Training

- Minimum 2 to 3 years of work experience in CNC programming & operation
- Minimum 2 to 3 years of work experience on CNC electrical maintenance or servicing with C828 or SINUMERIK One course

Course Duration and Timing

| Course | Beginner** | Advanced ** | Expert** | SDS & OMM |
|----------|--------------------|-------------|----------|---------------------|
| Duration | 3 Days | 2 Days | 5 Days | 2 hours (only demo) |
| Timing | 09:30AM to 05:30PM | | | |

** Duration may vary, however request you to refer course time lines for more details

Course Overview

Siemens DEX offers various modular practical training and development courses at its modern CNC training center. The participants receive personalized attention from our team of certified, highly skilled, and dedicated trainers. Live hands-on training sessions allow participants to gain effective learning with confidence.

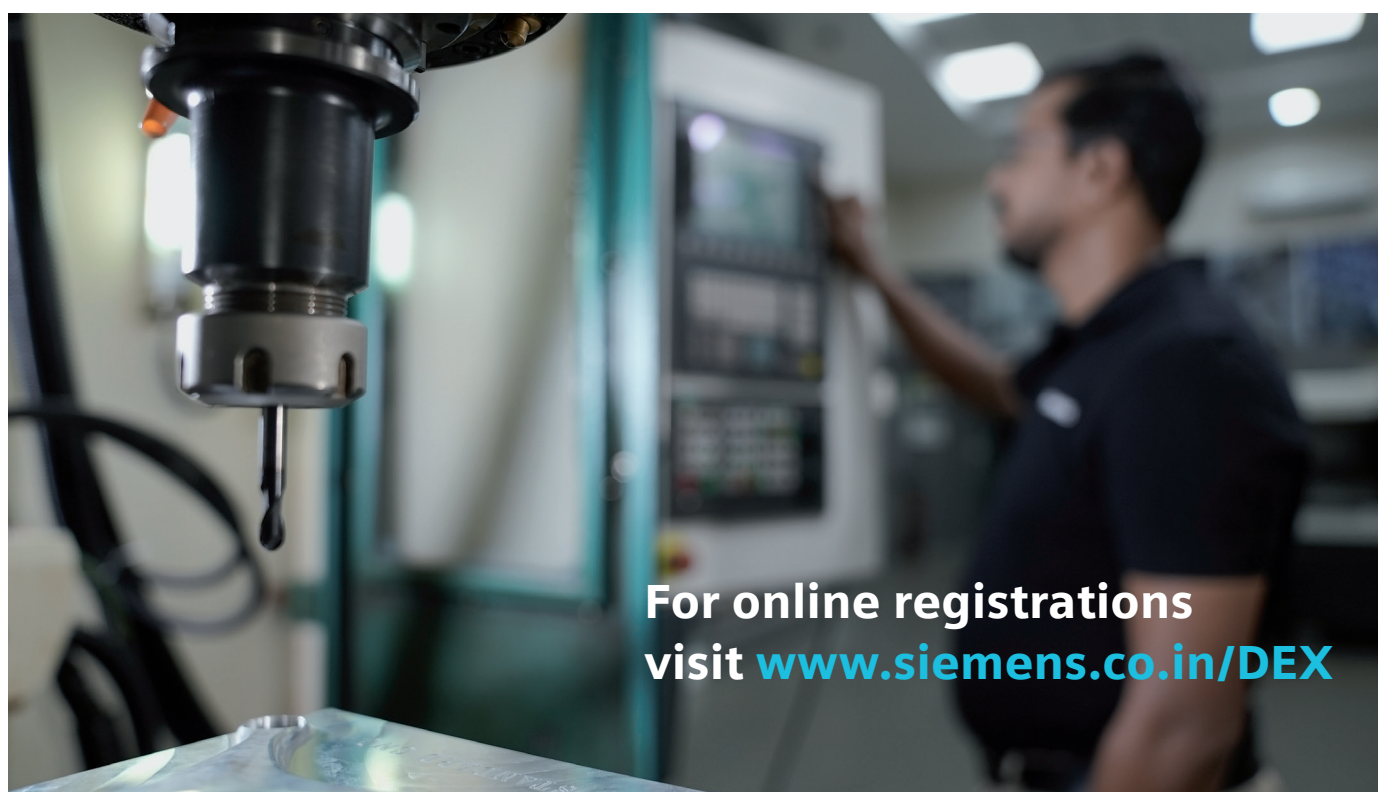
Each control series section is prefaced by an overview of available courses, including a course ID and a short description of respective training courses. These courses are scheduled following our regular training calendar. However, the DEX team can also develop a customized training curriculum and tailor the content basis your business requirements.

DEX Course Timeline

| DEX Course Timeline FY 2025-26 | | | | | |
|--------------------------------|-----------|---|------------------------|--------------|------------|
| Month & Year | Course ID | Course Name | Duration (Days/ Hours) | Course Start | Course End |
| Oct-25 | M104 | Advanced milling program with R-variables | 2 | 06.10.2025 | 07.10.2025 |
| | M100 | Milling SINUMERIK 828D/840DsI/SINUMERIK One | 3 | 13.10.2025 | 15.10.2025 |
| | M101 | 3+2 Milling programming - SINUMERIK 828D/840DsI/SINUMERIK One | 2 | 16.10.2025 | 17.10.2025 |
| | OMM | Optimize My Machining - Live demo on productivity improvement | 1 hour | 23.10.2025 | 23.10.2025 |
| | SDS | Siemens Industry 4.0 & Digital twin - Live demo | 2 hours | 24.10.2025 | 24.10.2025 |
| | S#1 | Commissioning & Maintenance SINUMERIK One | 5 | 27.10.2025 | 31.10.2025 |
| Nov-25 | KCM | Kinematic chain & Kinematic measurement with SINUMERIK 828D/SINUMERIK One | 2 | 03.11.2025 | 04.11.2025 |
| | T100 | Turning SINUMERIK 828D/840DsI/SINUMERIK One | 3 | 10.11.2025 | 12.11.2025 |
| | T103 | Turn/Mill with Y SINUMERIK 828D/840DsI/SINUMERIK One | 2 | 13.11.2025 | 14.11.2025 |
| | SDS | Siemens Industry 4.0 & Digital twin - Live demo | 2 hours | 17.11.2025 | 17.11.2025 |
| | ESS | Easy to sell SINUMERIK - Workshop | 1 | 18.11.2025 | 18.11.2025 |
| | STM | Tool Management SINUMERIK 828D - Commissioning | 2 | 24.11.2025 | 25.11.2025 |
| | P828 | Preventative Maintenance SINUMERIK 828D | 1 | 26.11.2025 | 26.11.2025 |

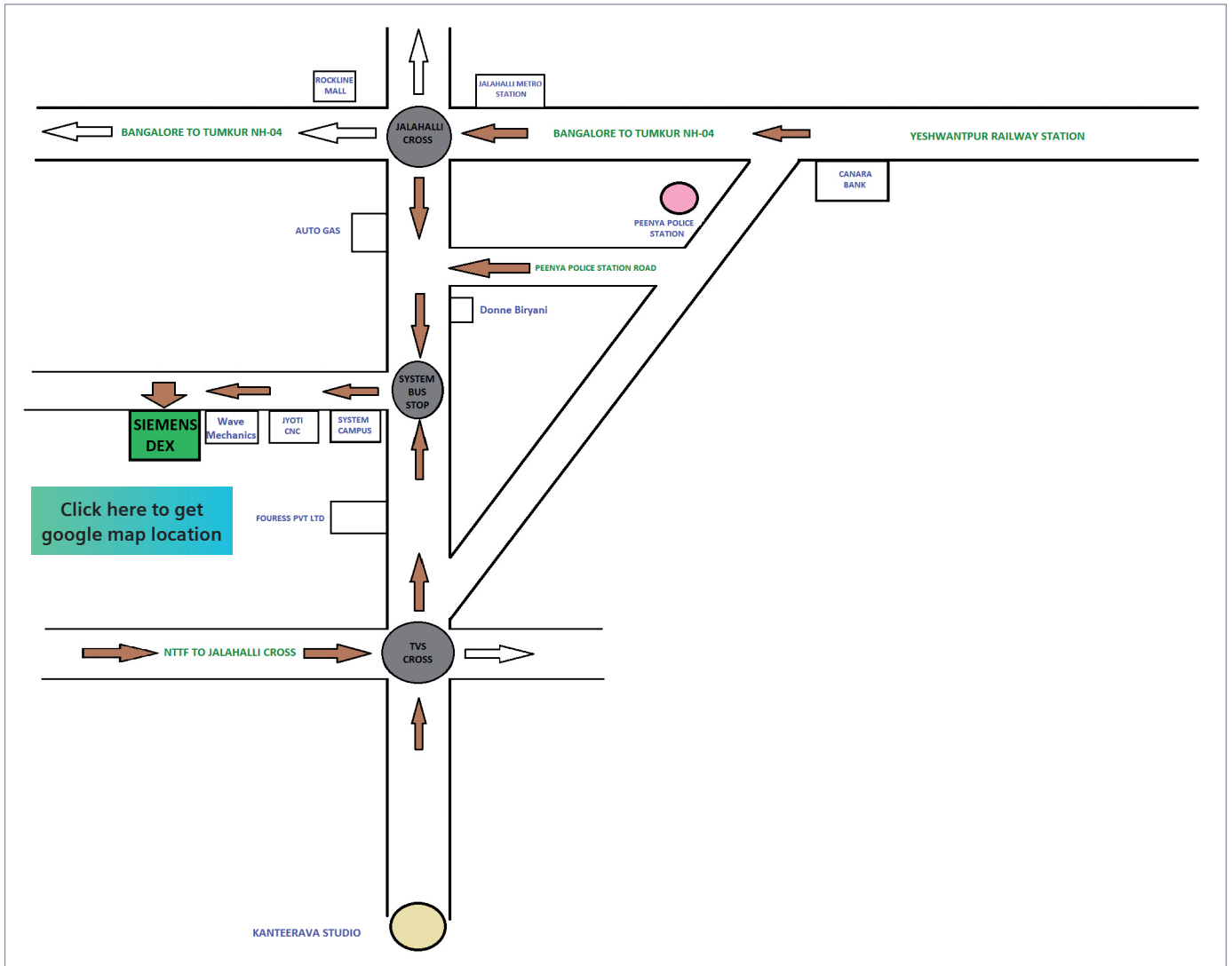
| DEX Course Timeline FY 2025-26 | | | | | |
|--------------------------------|-----------|--|------------------------|--------------|------------|
| Month & Year | Course ID | Course Name | Duration (Days/ Hours) | Course Start | Course End |
| Dec-25 | M100 | Milling SINUMERIK 828D/840DsI/SINUMERIK One | 3 | 01.12.2025 | 03.12.2025 |
| | M102 | 3D Probe / Measuring Cycles SINUMERIK 828D/840DsI/ SINUMERIK One | 2 | 04.12.2025 | 05.12.2025 |
| | ASO | Advanced servo optimization | 2 | 08.12.2025 | 09.12.2025 |
| | C828 | Commissioning & maintenance SINUMERIK 828D | 4 | 15.12.2025 | 18.12.2025 |
| | OMM | Optimize My Machining - Live demo on productivity improvement | 1 hour | 16.12.2025 | 16.12.2025 |
| | SDS | Siemens Industry 4.0 & Digital twin - Live demo | 2 hours | 18.12.2025 | 18.12.2025 |
| | P828 | Preventative Maintenance SINUMERIK 828D | 1 | 19.12.2025 | 19.12.2025 |
| | T100 | Turning SINUMERIK 828D/840DsI/SINUMERIK One | 3 | 22.12.2025 | 24.12.2025 |
| | M101 | 3+2 Milling programming - SINUMERIK 828D/840DsI/SINUMERIK One | 2 | 25.12.2025 | 26.12.2025 |
| | M104 | Advanced milling program with R-variables | 2 | 29.12.2025 | 30.12.2025 |
| Jan-26 | M100 | Milling SINUMERIK 828D/840DsI/SINUMERIK One | 3 | 05.01.2026 | 07.01.2026 |
| | KCM | Kinematic chain & Kinematic measurement with SINUMERIK 828D/ SINUMERIK One | 2 | 12.01.2026 | 13.01.2026 |
| | T103 | Turn/Mill with Y SINUMERIK 828D/840DsI/SINUMERIK One | 2 | 15.01.2026 | 16.01.2026 |
| | PET | Productivity Enhancement in Turning SINUMERIK 828D/SOne | 1 | 19.01.2026 | 19.01.2026 |
| | PEM | Productivity Enhancement in Milling SINUMERIK 828D/SOne | 1 | 20.01.2026 | 20.01.2026 |
| | ESS | Easy to sell SINUMERIK - Workshop | 1 | 27.01.2026 | 27.01.2026 |
| | T100 | Turning SINUMERIK 828D/840DsI/SINUMERIK One | 3 | 28.01.2026 | 30.01.2026 |
| Feb-26 | STM | Tool Management 882D - Commissioning | 2 | 02.02.2026 | 03.02.2026 |
| | OMM | Optimize My Machining - Live demo on productivity improvement | 1 hour | 03.02.2026 | 03.02.2026 |
| | S#1 | Commissioning & Maintenance SINUMERIK One | 5 | 09.02.2026 | 13.02.2026 |
| | SDS | Siemens Industry 4.0 & Digital twin - Live demo | 2 hours | 11.02.2026 | 11.02.2026 |
| | M100 | Milling SINUMERIK 828D/840DsI/SINUMERIK One | 3 | 16.02.2026 | 18.02.2026 |
| | M101 | 3+2 Milling programming - SINUMERIK 828D/840DsI/SINUMERIK One | 2 | 19.02.2026 | 20.02.2026 |
| | P828 | Preventative Maintenance SINUMERIK 828D | 1 | 23.02.2026 | 23.02.2026 |
| | SDS | Siemens Industry 4.0 & Digital twin - Live demo | 2 hours | 24.02.2026 | 24.02.2026 |
| Mar-26 | C828 | Commissioning & maintenance SINUMERIK 828D | 4 | 02.03.2026 | 05.03.2026 |
| | PET | Productivity Enhancement in Turning SINUMERIK 828D/SOne | 1 | 06.03.2026 | 06.03.2026 |
| | OMM | Optimize My Machining - Live demo on productivity improvement | 1 hour | 09.03.2026 | 09.03.2026 |
| | SDS | Siemens Industry 4.0 & Digital twin - Live demo | 2 hours | 10.03.2026 | 10.03.2026 |
| | T100 | Turning SINUMERIK 828D/840DsI/SINUMERIK One | 3 | 16.03.2026 | 18.03.2026 |
| | P828 | Preventative Maintenance SINUMERIK 828D | 1 | 19.03.2026 | 19.03.2026 |
| | M102 | 3D Probe / Measuring Cycles SINUMERIK 828D/840DsI/ SINUMERIK One | 2 | 23.03.2026 | 24.03.2026 |

Non-attendance or cancellation of participation will be subject to Siemens DEX cancellation policy.



For online registrations
visit www.siemens.co.in/DEX

DEX Direction Map



For online registrations, visit www.siemens.co.in/DEX

Siemens Ltd.
 Digital Experience & Application Center
 Shed No. 1 & 2, SY No. 26 & 27
 Plot No. 1 A, Systems Campus
 Peenya Industrial Area, Phase 2
 Chokkasandara Village, Yeshwantpur Hobli
 Bengaluru - 560058
 Karnataka, India
 Tel.: 080-4097 5628
 E-mail: tac.training.in@siemens.com

Article No.: DI-MC-MTS-DEX-FY25-11

For more information call us on 1800 209 1800

www.siemens.co.in/DEX

For Life Cycle Support of Products, Systems and Solutions call us on 1800 209 0987

Product upgradation is a continuous process. Hence, data in this brochure is subject to change without prior notice. For the latest information, please get in touch with our Sales Offices.