

XHQ OPERATIONS INTELLIGENCE SOFTWARE

# Turn data into **actionable information**

[siemens.com/xhq](https://siemens.com/xhq)

**SIEMENS**

# What is XHQ?

XHQ is a powerful software for operations intelligence with unique capabilities that enables simple access and understanding of complex data. Focusing on process industries challenges, XHQ addresses areas where real-time, relational, and historical data are used, helping users to make more informed decisions – anytime and anywhere.

It's easy to get started, easy to expand, and XHQ will work for you all day, every day, in real-time. It is your choice to deploy XHQ in the cloud or on-premise.

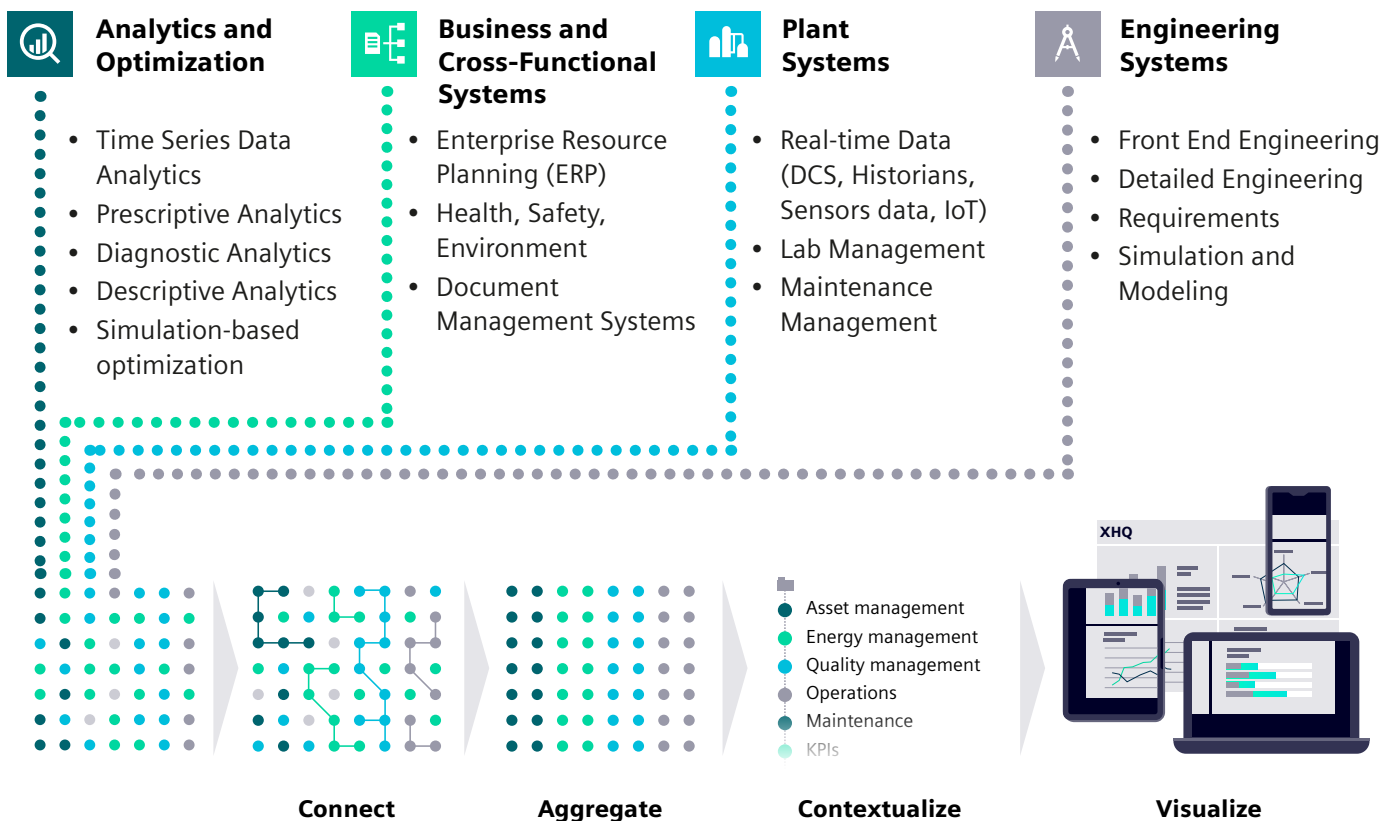
It's that simple. It's XHQ.

## What does it do?

XHQ connects to any data source: databases, historians, maintenance, ERP, quality, supply chain, and many others. It organizes the data, contextualizes it into a cohesive information model, and visualizes the results.



- Simple access to complex data
- Real-time information
- Make use of data you already have
- Break down barriers between software silos
- Drive collaboration at all levels
- Empowered decisions, anytime, anywhere



# How does it work?

Most people interact with XHQ through its rich web-based visualization, which is configured to suit your business needs. Web pages are assembled from a variety of widgets, including schematics, pictures, tables, charts, trends, GIS, and hyperlinks.

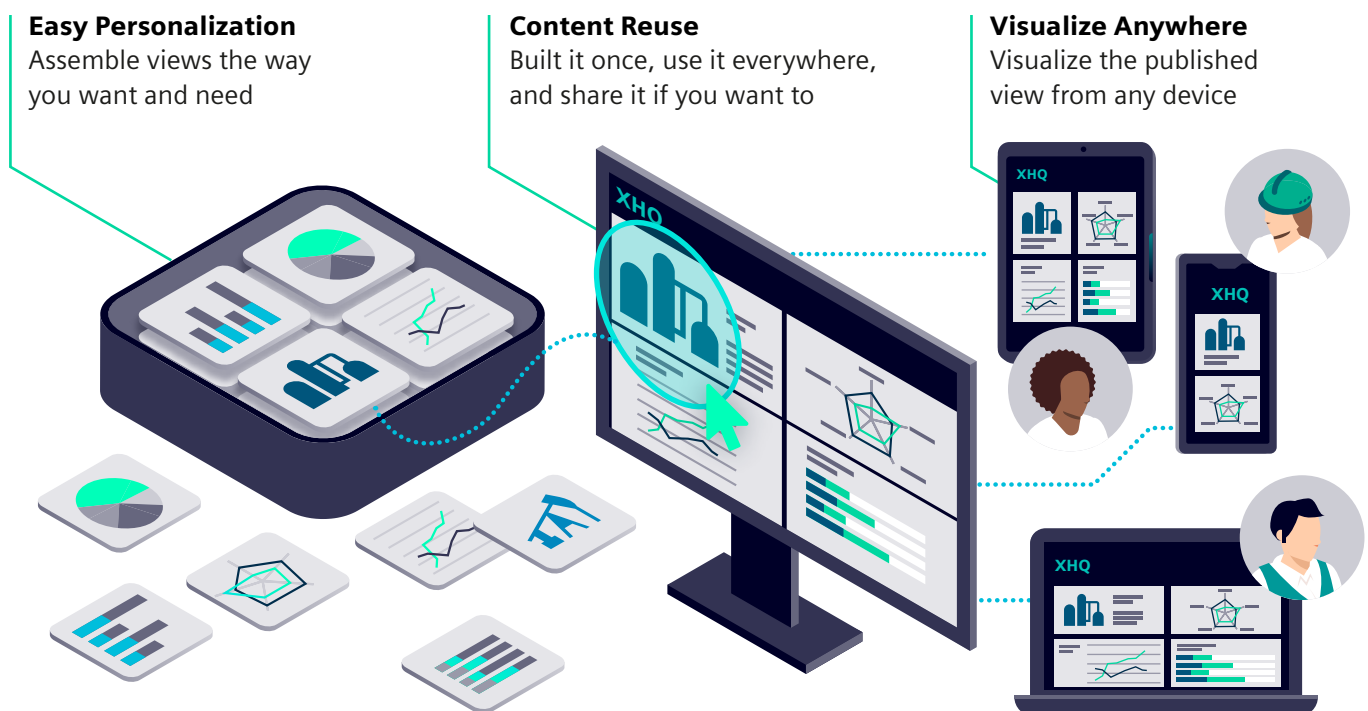
Displays are driven by the XHQ information model, which organizes and contextualizes the data to represent how the business is organized – by function, by facility, by production line – whatever makes sense. An XHQ solution can make use of data from many different sources, including process historians, relational databases, batch systems, web services, and ERP systems such as SAP.



## Easy personalization with VTC

In XHQ, you can create personalized views with validated content. Visual Tile Composer or VTC is a feature which allows users to assemble content with the use of just a modern browser. You can easily assemble self-served views by dragging and dropping tiles from existing libraries.

The assembled views can also be shared with other team members, enhancing team collaboration and productivity. VTC brings you easy and personalized access to your data, the way you like it and at your fingertips.



# How can I use it?

Here are just some of the ways XHQ can be used:

**Executives and Managers** can view real-time operational status updates through a visual model of the enterprise. They can easily locate summaries of performance indicators for every division under their control.

**Task-specific Workers** can obtain information from various systems and make better bottom-line decisions in their daily work.



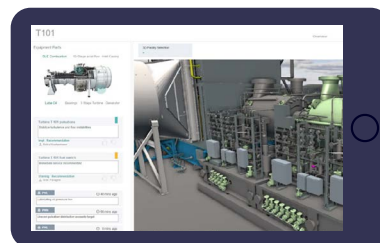
**Planners and Analysts** can view real-time representations of current operations, complete with forward-running plans, and compare present and past performance.

**Supervisors of Departments and Activities** can see an overview of the processes within their control, whether in order-entry, maintenance, operations, or elsewhere.



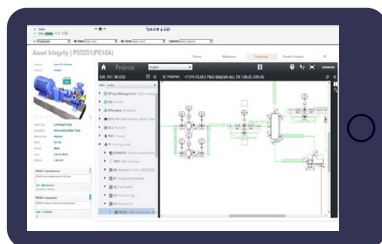
**EXAMPLE  
Asset Manager  
View**

- Corporate rollup KPIs
- Global fleet management
- Asset level performance and bad actors



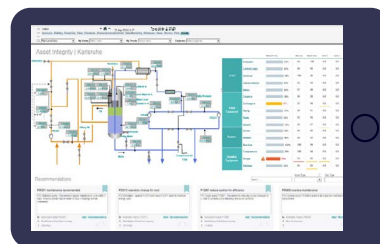
**EXAMPLE  
Maintenance  
Operator View**

- 3D visualization
- Detail parts view and explosion
- Maps
- Immersive operator training
- Field-work planning



**EXAMPLE  
Engineer  
View**

- Financial data
- Production KPIs
- Utilization
- Safety
- Environment
- Efficiency

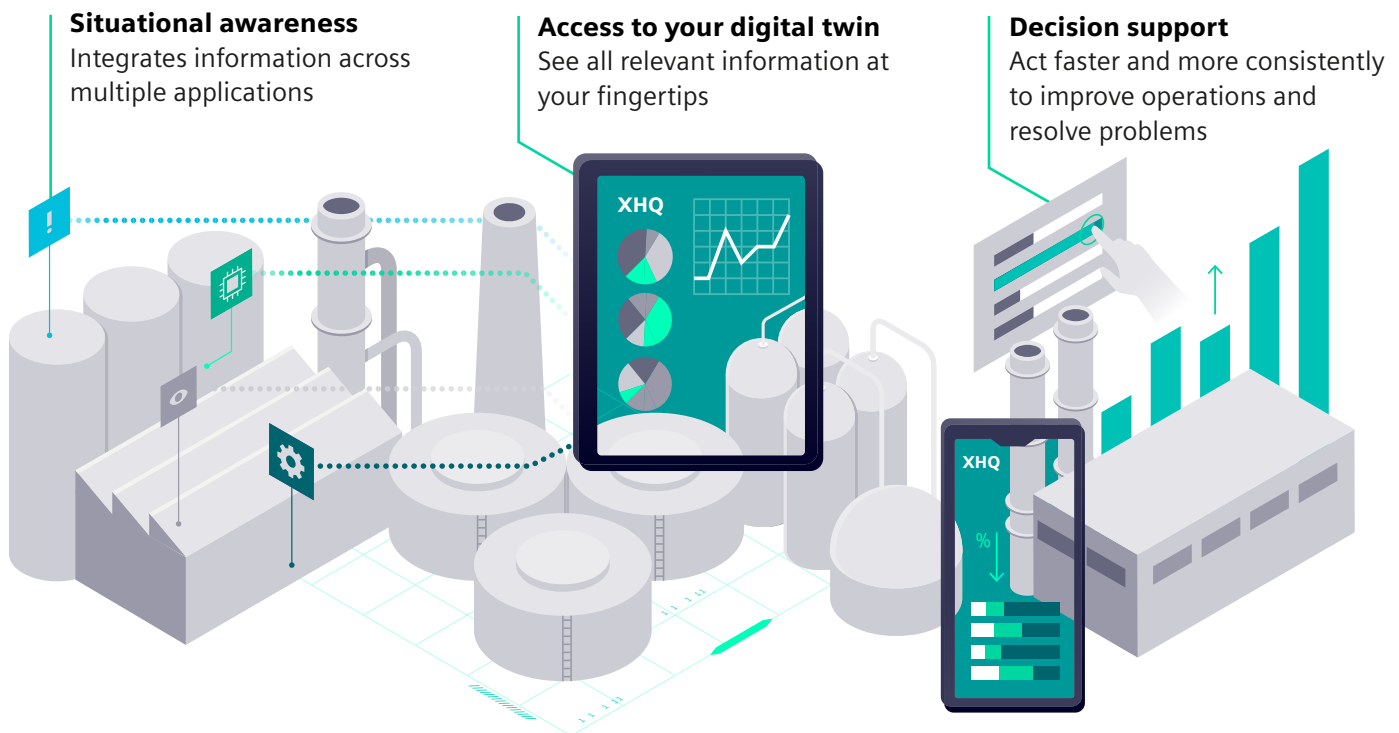


**EXAMPLE  
Production  
Manager View**

- Front-end engineering
- 2D drawings
- P & ID
- Spec sheets
- Detailed engineering
- Requirements

# Why XHQ?

Unlike generic dashboard solutions, XHQ is a top tier industrial software that enables customers to visualize plant information in a dynamic and real-time way. With its unique capabilities of contextualizing and visualizing information from any type of data, XHQ equips the workforce with real-time decision support to improve your operations. XHQ turns data into actionable information at your fingertips, anytime and anywhere.



## The power of contextualized data

XHQ is in the market for more than 22+ years, empowering industries of all types to make faster and better decisions. Customers around the world have achieved outstanding results using XHQ within most various areas and use cases, bringing real measurable benefits such as:



**8% reduction**  
in the operating costs



**9% increase**  
in facility utilization



**2.5% increase**  
in operational availability



**11% increase**  
in production



**95% reduction**  
in overdue safety work orders



**10-15% improvement**  
in anticipation process problems

What is XHQ?

How does it work?

How can I use it?

Why XHQ?

**Contact us**

### XHQ provides:



**Easy access, anytime  
and anywhere**



**Analytics**



**Real-time  
monitoring**



**Rich user  
experience**



**Contextualized  
data**



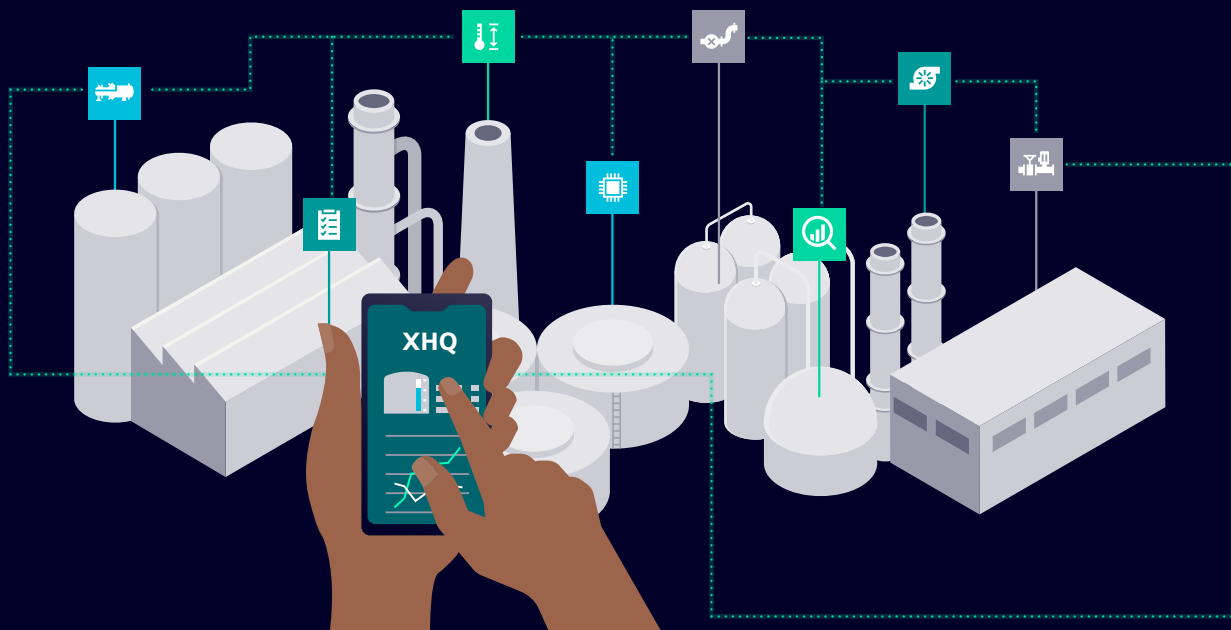
**Collaboration at  
all levels**



**On premise  
and cloud**

Contact us to learn how to get immediate benefits with reliable and real-time information at your fingertips.

[siemens.com/xhq](https://www.siemens.com/xhq)



**Published by:**

Siemens Industry Software Inc.  
Digital Industries  
Process Automation  
5980 West Sam Houston Parkway N, Suite 100  
Houston, TX 77041  
United States

**For more information, please contact**

E-mail: [info.xhq@siemens.com](mailto:info.xhq@siemens.com)

Article No: DIPA-B10382-00-4AUS

© Siemens 2023

Subject to changes and errors. The information given in this document only contains general descriptions and/or performance features which may not always specifically reflect those described, or which may undergo modification in the course of further development of the products. The requested performance features are binding only when they are expressly agreed upon in the concluded contract.

**SIEMENS**