

FAST AND EASY VIEW CONVERSION

# Process Schematics Conversion with XHQ

[siemens.com/xhq](https://siemens.com/xhq)

**SIEMENS**

## The need for the conversion and challenges faced by customers

For businesses whose end-users have limited internal resources or those who have developed VBScripts in OSIsoft™ PI ProcessBook™ and/or relied on the SQC add-in, the recently announced end-of-life for this tool may pose significant challenges. Therefore, it is crucial to consider upgrading to alternative solutions to ensure the continued efficiency and reliability of your operations beyond the specified dates.

XHQ offers the possibility to boost the use of process schematic diagrams by integrating and contextualizing such information with data from other systems.

## The solution we have

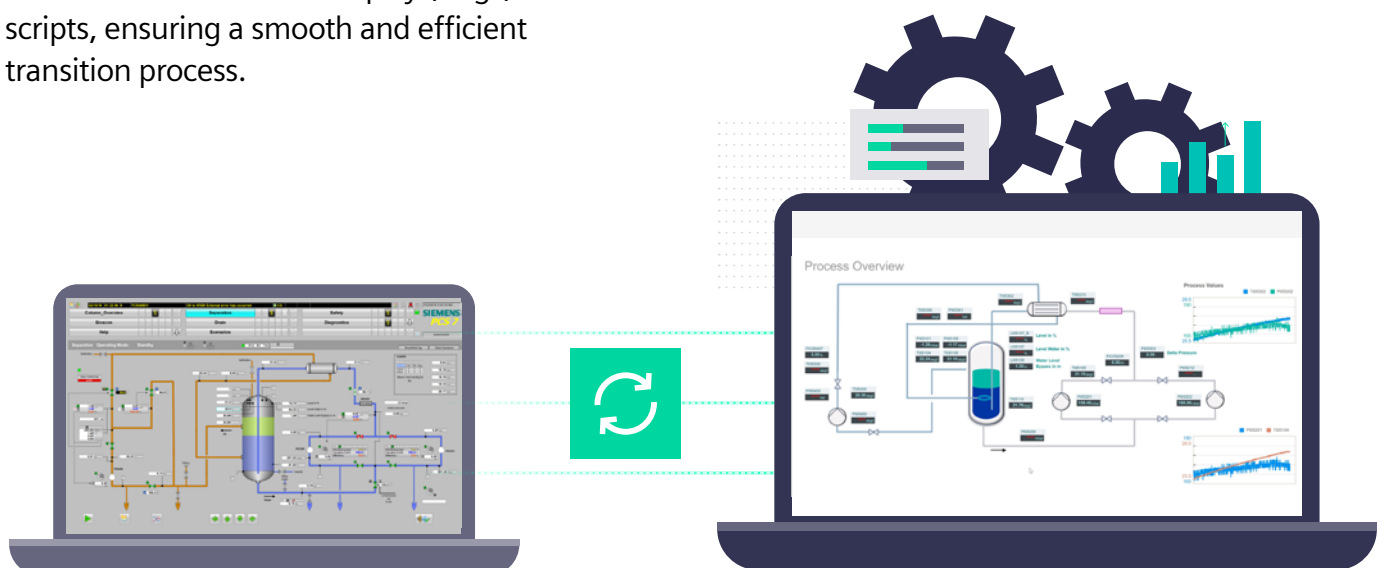
XHQ schematic conversions provide high-fidelity replicas of process schematic diagrams from control systems, plus the added value context of information from other disparate real-time, historical, and enterprise corporate systems that only XHQ can provide in a holistic way.

The XHQ View Conversion process leverages a powerful conversion utility for a seamless migration experience. The utility will automatically transfer all existing solution's assets such as displays, tags, and scripts, ensuring a smooth and efficient transition process.

## The power of contextualized data

XHQ is software that brings together manufacturing, operations, and equipment data into one integrated common-view system for in-context reporting, analysis, decision support, and visualization.

- Native connection to OSIsoft PI Server™ and key Historian vendors
- Extend beyond process screens e.g., use process surveillance as part of Manufacturing Control Towers, Reliability Surveillance, Energy & Emission Monitoring, etc.
- Allows users to add more data sets and data types e.g., Integrated relational record sets and operator/engineer comments.
- Workflow enablement tools with XHQ: Lost Opportunity, eLogs, ANS, Target Management, etc.
- Reusable templates that ease the maintainability of views code-free (no VB scripts necessary).



## Achieve excellence in operation with XHQ

XHQ has been in the market for more than 22 years, empowering industries of all types to make faster and better decisions.

With XHQ software, anyone can create a set of dashboards and visual displays that combine information from many sources, which helps staff quickly understand the true state of the business, process, and assets; troubleshoot problems; and manage routine conditions.

For operations and engineering, read-only schematics provides visibility to the workforce outside of the control room, reducing the need for visits to the control room, and equipping the workforce with instant read-only access to the process and equipment surveillance system.

Moreover, this approach is considered more secure and safer than granting remote access to the c-NET DCS system. Additionally, leveraging XHQ's historical playback feature allows users to troubleshoot plant incidents effectively and observe prior start-up/shutdown sequences, enabling more informed interventions in subsequent operations.

### XHQ Advantages for Process Schematics Conversion



#### Pricing Model

- Based on the number of users and data sources
- Accommodates organization's size and requirements from entry level to enterprise



#### Migration

- Powerful process schematic conversion tool
- Smooth and efficient transition from PI ProcessBook to XHQ
- Automatic transfer of displays, tags, and scripts



#### Support

- Expert support team available throughout migration
- Guidance, training, and technical assistance provided
- Ensures maximum value extracted from XHQ Operations Intelligence



#### Go Beyond

- Extend beyond process screens and achieve higher integration, reliability and productivity
- Integrate relational record sets

## Your Benefits with XHQ

### Simple access to complex data

See your digital twin

- Situational awareness
- Asset integrity
- Better operations
- Smart decisions

