



DIGITAL INDUSTRIES SOFTWARE

Capital X

The industry leading solution for comprehensive electrical/electronic (E/E) systems development now delivered as software-as-a-service and operated by Siemens

Benefits

- The same trusted solution for over two decades in a more accessible, scalable, and flexible manner than ever before
- Designed for rapid deployment to enable fast time to value compared to on-premise
- Shift your IT burden to Siemens' for operation of secure and high-performing digital enterprise solutions
- Reallocate your costs into predictable operational expense and achieve operational resiliency and continuity

Summary

Product development has become increasingly complex as demand for smart, connected, and sustainable products have put tremendous pressure on manufacturers to deliver faster while maintaining high quality and reliability. Such complexity is challenging engineering departments that are trying to use yesterday's processes to develop tomorrow's products. Siemens Capital X streamlines and accelerated E/E systems development by leveraging a model-based systems engineering (MBSE) approach, enabling deep integrations into PLM, and MCAD for a seamless workflow that facilitates collaboration and iterative design.

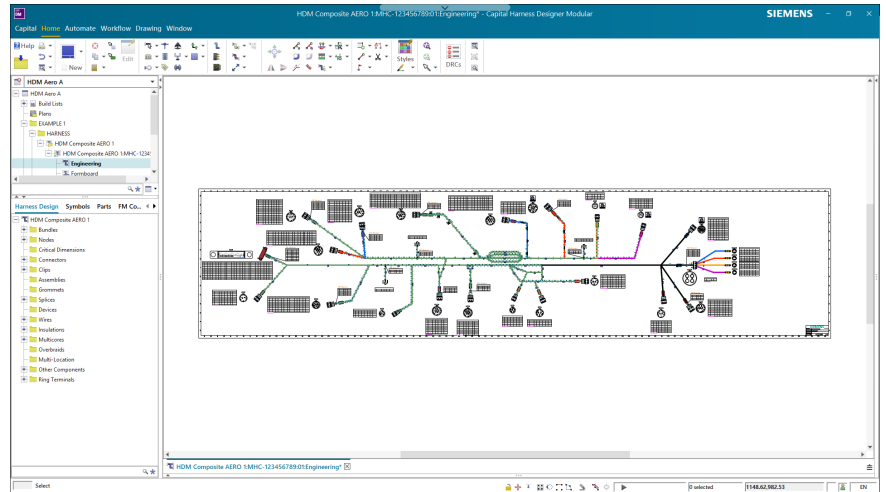
Capital X solutions are delivered via cloud SaaS named-user licensing as part of the Siemens Xcelerator platform of software, hardware and services. Traditional on-premises software is also available through the Capital portfolio of solutions.

SIEMENS

[siemens.com/software](https://www.siemens.com/software)

Features

- Secure web-based access any time anywhere
- High performance cloud infrastructure and expert managed operations
- Secure cloud platform that is always up-to-date
- Customer success management ensures business outcomes



Capital X is Capital and more

Capital has been the most comprehensive E/E systems development solution for over two decades, trusted by the world's most respected companies for engineering complex products such as cars, aircraft, and sophisticated machines.

- Model-based E/E systems development
- Interactive 3D modeling enabled by MCAD integrations
- Real-time design verification via customized Design Rule Checks (DRCs)
- Advanced automation including generative design
- Optimized harness engineering and manufacturing

The integrated approach enables key domains to work together, ensuring traceability of components, requirements, design and changes throughout the development cycle.

Secure web access any time anywhere

Accessing software with a web browser has become the norm for many tasks but due to the massive amount of data, E/E systems development has its roots in complex and expensive hardware and software. Accessing E/E designs and data on demand with a web browser means you don't need dedicated hardware for processing and storage. An identical user experience on any device gives teams the ability to work from anywhere, no longer constrained by specialized on-premises IT infrastructure.

High performance cloud infrastructure and expert managed operations

Creating your products should take most of your time and attention. Implementing and operating software can become a distraction and shift the focus from core competencies. This is where Siemens can help by providing expertly specified and configured enterprise grade hardware, and complete operations management and application technical support. The advantages of Capital X are numerous, out-pacing on-premise implementations in speed and flexibility and providing a single point of contact for application and infrastructure support.

Secure cloud platform that is always up-to-date

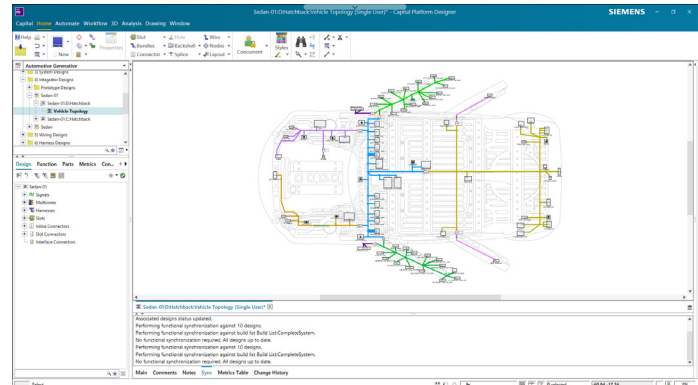
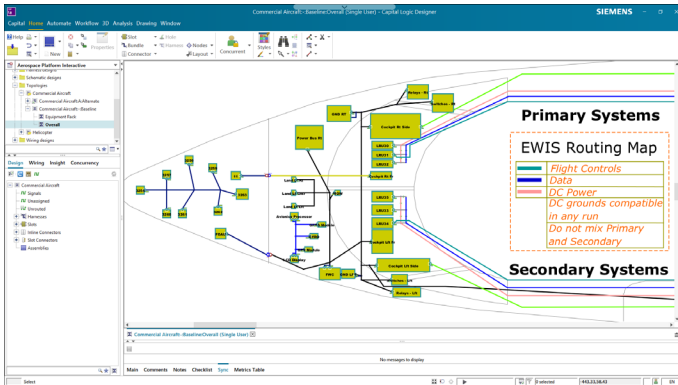
Capital X is a secure cloud platform that is always up-to-date ensuring the highest levels of protection for your data, while also enhancing your organization's operational resilience. Independently verified for data

security by third party security testing, Capital X is certified for ISO27001. Additional SOC 2 compliance certification will be available once the required testing term has been completed. All OS updates, virus and security scanning and monitoring are included as part of your single point of contact.

Customer success management to achieve business outcomes

A dedicated Customer Success Manager (CSM) is pivotal in achieving business outcomes and goals swiftly. By collaborating with your dedicated CSM, your team co-creates a tailored Customer Success Plan to mobilize the right Siemens resources, ensuring faster onboarding and competency-based adoption. This approach assures quick, lasting adoption that propels projects forward, keeping users proficient and productive. With a CSM as your trusted advisor and advocate, you have a single point of contact for managing your needs, offering one-to-one full life-cycle guidance. This partnership ensures you realize the value of your services promptly, fostering a long-term, mutually successful relationship.

With Capital X, companies no longer need to invest in expensive hardware and software installations or maintain them on their own.



Capital X enables you to connect your systems, data, and people

Integrate

Seamlessly integrate with other key systems to create a comprehensive ecosystem that spans the entire product lifecycle. Ensure engineers have up-to-date data to transition from design to manufacturing.

Collaborate

Blur the boundaries between domains by creating multi-domain visibility. Improve cross-discipline collaboration to get to market faster with less program risk.

Automate

Embrace the power of automation and the comprehensive digital twin to swiftly and accurately create and optimize designs. Eliminate extensive manual effort and allow for creative innovation.

Optimize

Create a comprehensive model-based digital twin of your product and processes to achieve optimized electrical and electronic outcomes.



Companies seeking to reduce time to market, minimize prototyping and testing costs, increase systems quality, and ultimately remain competitive in today's rapidly evolving industry should adopt cloud-based SaaS solutions for E/E development.”

Chad Jackson
CEO and Chief Analyst
Lifecycle Insights

Siemens Digital Industries Software
[siemens.com/software](https://www.siemens.com/software)

Americas
1 800 498 5351

Europe
00 800 70002222

Asia-Pacific
001 800 03061910

For additional numbers, click [here](#).