

# Building X

## Security Manager

Operate security systems remotely | Manage daily security operations | Achieve security KPIs

# Customers know Digitization will affect every process

# 81%

of customers

... see **real-time analytics** as important tool to extract business value from data in their organization.<sup>1</sup>

# 80%

of customers

... want **visualization of data**.<sup>2</sup>

# 50%

of customers

... expect **new digital services and business models**.<sup>2</sup>



<sup>1</sup> Harvard Business Review Analytics Services Survey, 2020 | <sup>2</sup> Siemens customer survey 2014, 2015

# Can digitization and cloud technology boost your security?



# Digitize your workflows and be more flexible across devices, sites and domains and start enabling AI use cases



Siemens Real Estate - Sweden

## Reducing food waste and cleaning costs using occupancy data

**Streamlined Maintenance Activities:** Optimized maintenance tasks for building assets such as doors, reducing wear and tear.

**Building Utilization Insights:** Improved understanding of building usage patterns, particularly after COVID-related lockdowns.

**Reduction in Food Waste:** Leveraged occupancy data to achieve a 40% reduction in food waste.

**Cleaning Cost Savings:** Achieved a 20% reduction in cleaning costs through data-driven efficiency.

### Delivering Value with Building X

26

Offices

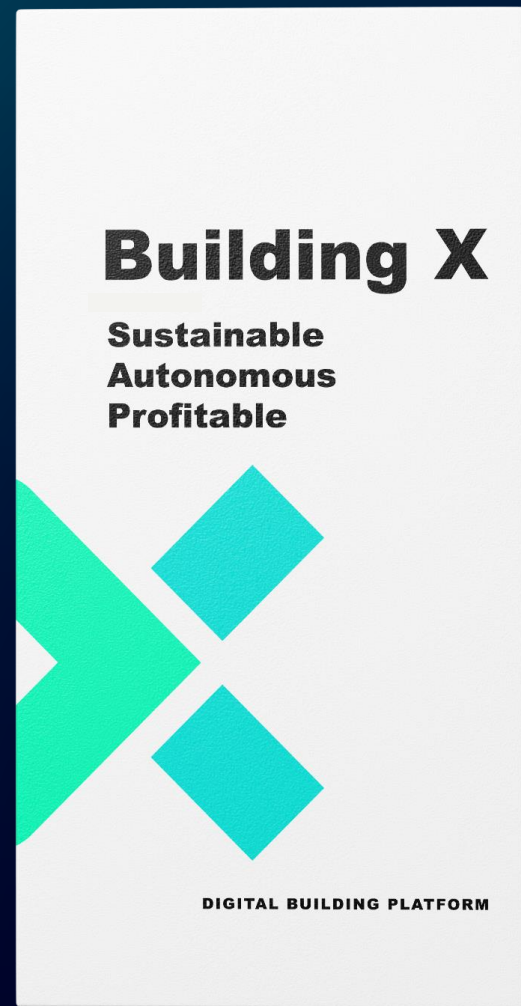
Food waste  
& cleaning cost

Reduced

Security  
Manager

Building X  
Portfolio

Introducing  
**Building X**,  
the operational core  
of your buildings.



# Building X

A digital platform that digitalizes, manages, and optimizes building operations



Applications

Digital Services

## Building X Platform

Data Aggregation | Advanced Analytics | Edge Device Management | Open APIs

## Digital Infrastructure

Edge HW & SW | Cloud-2-Cloud | NexGen Controllers | 3<sup>rd</sup>-Party Connectivity

Cybersecurity

Ecosystem





# Manage physical access to doors and buildings like never before!

**Open doors** with your smartphone and manage access privileges anytime, anywhere

**Centrally manage identities**, credentials, and access rights with automatic user onboarding/offboarding

**Re-use** existing hardware by integrating with access control systems like SiPass and SIPORT

**Low-invest** for greenfield sites — no on-premise server needed when using edge-connected access controllers\*

**Remotely unlock doors** and **schedule access** via web or mobile interface for greater flexibility and control

**Print and encode cards** using the ACC-AP controller with predefined layouts and an easy, cloud-based workflow





## Get actionable insights based on security data

Improve physical security, business continuity and system uptime by analyzing security data provided by a **KPI dashboard**

**Visualize unique access events and occupancy per building or site**

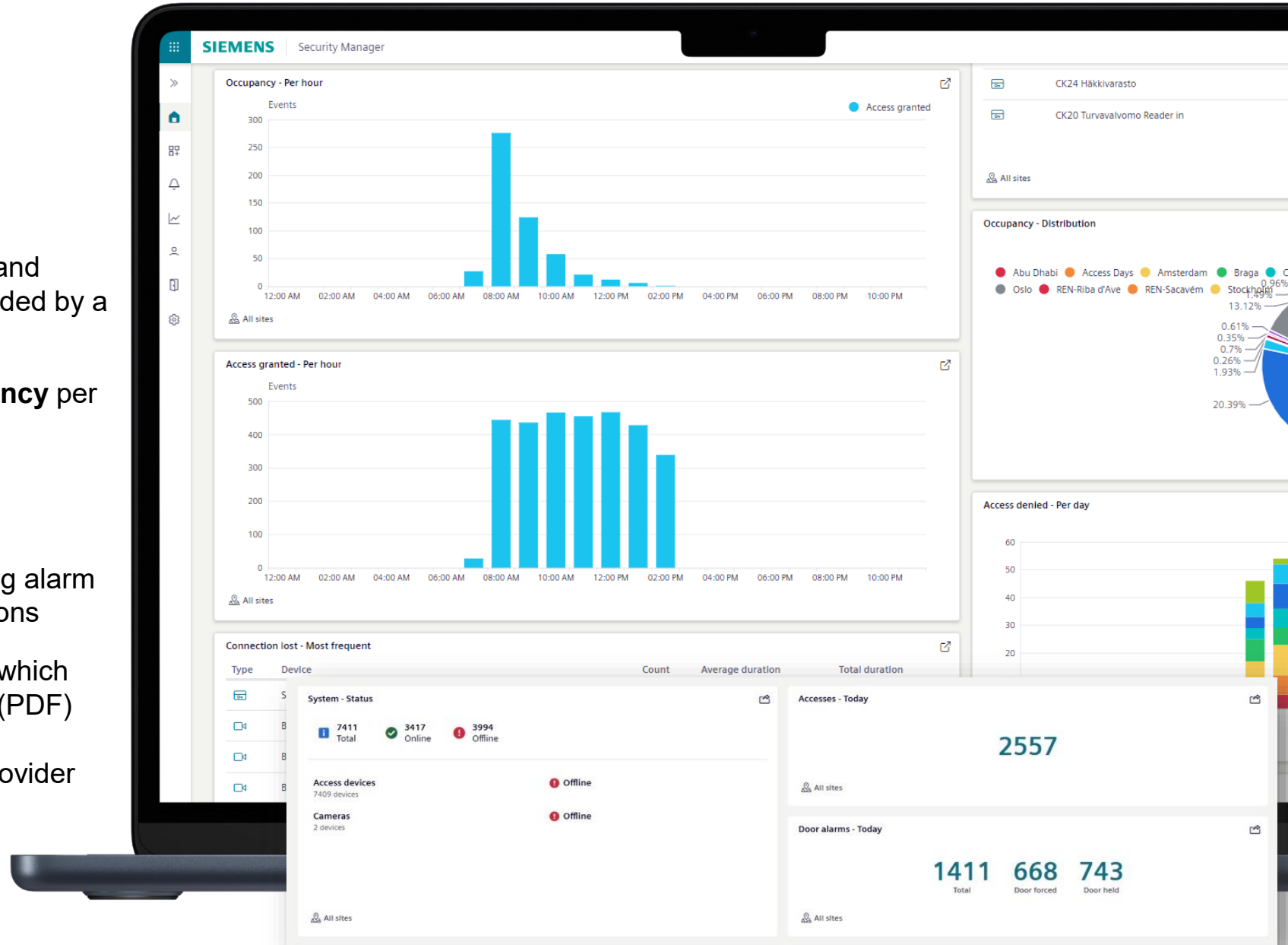
**Measure room or building utilization** based on the number of access-granted events

**Identify maintenance candidates** by analyzing alarm or utilization outliers as indicators for malfunctions

**Generate and schedule reports** by selecting which KPIs shall be included in well formatted report (PDF)

**Live streams** from the Arcules Cloud Video Provider can be integrated on Dashboard

**System Health: EC10 Readers & Camera Connection**





## Enhance employee experience with pre-defined workflows and seamless self-service

**Automate processes** to speed up the task of employee on and offboarding and to increase overall security

**Enforce company policies and rules by defining only authorized people** to approve or deny requests, without any exception to the rules

**Convenience for employees' thanks to** a simple, intuitive web-based portal that approves access requests without any need to understand underlying processes





## React fast to security alarms & tasks

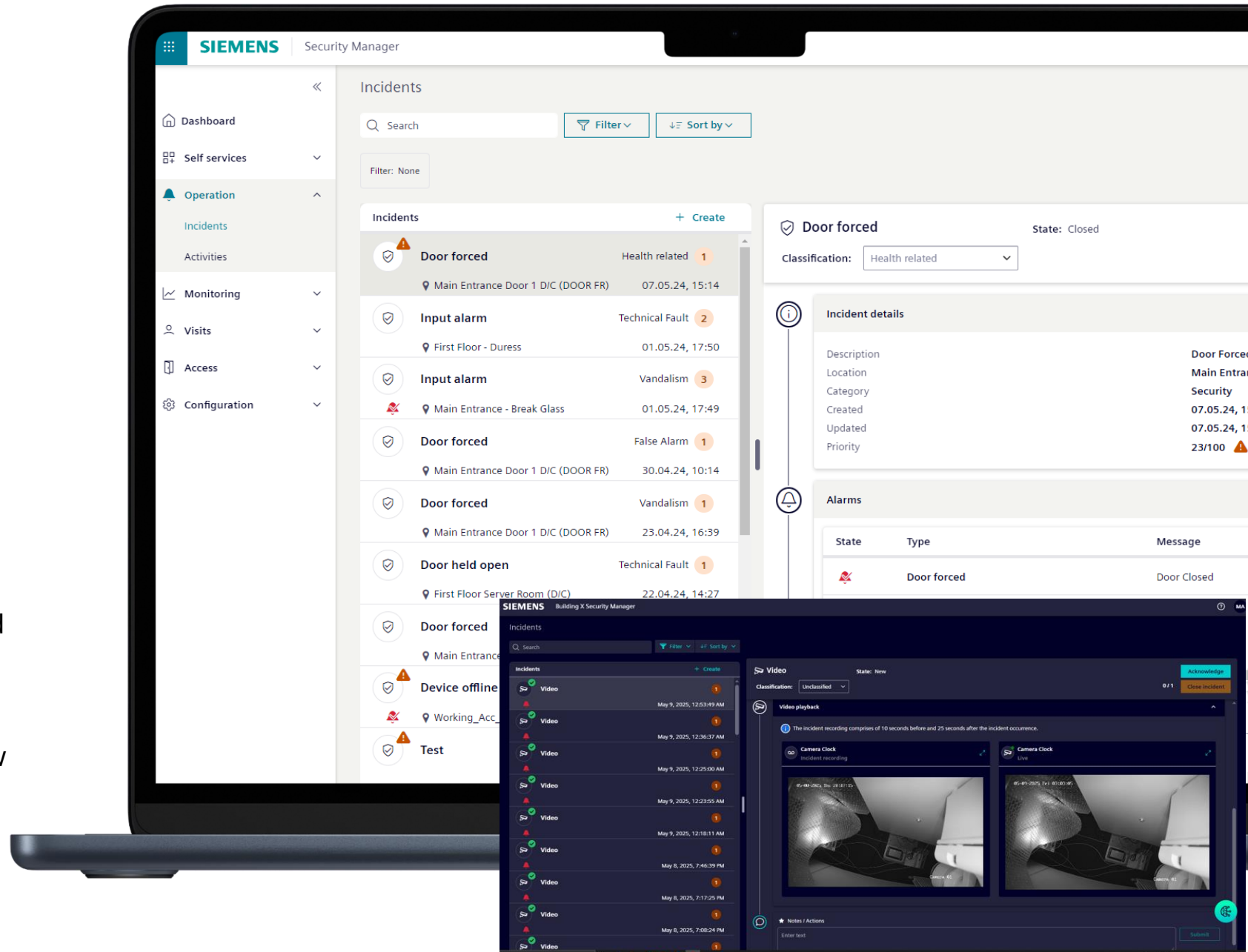
Provide “out-of-the-box” dynamic standard operating procedures (**SOPs**) to resolve security tasks efficiently

**Stay focused** by combining alarms that occur at the same location into a single task

**Verify any situation** from anywhere and anywhere incidents around access control

**Mange access control**, intrusion detection and video alarms in one place.

**View live or historical videos** to acknowledge video alarms from Arcules in Incidents and view video connection lost alarms in Monitoring.



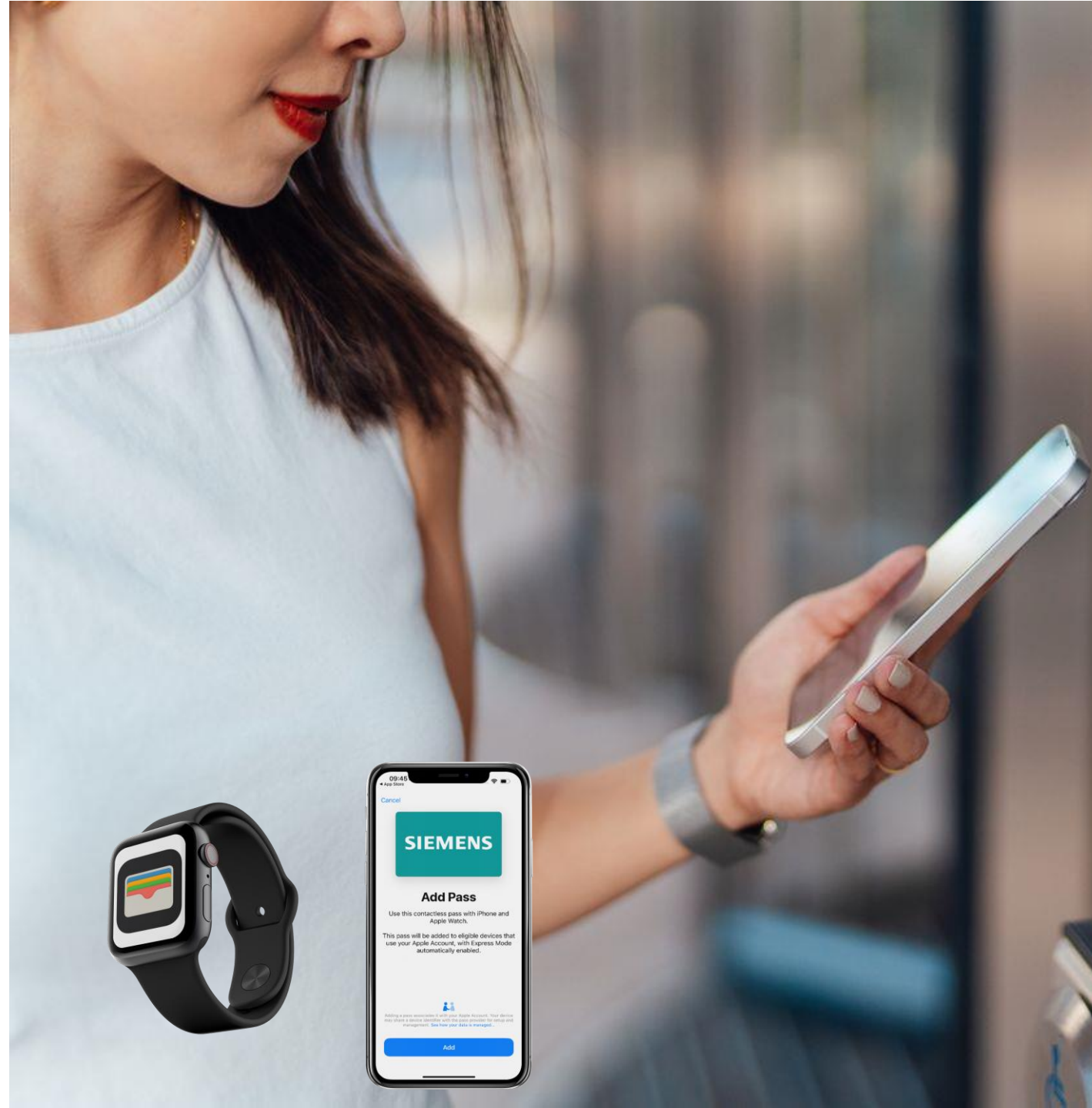


## Better user experience with Apple Wallet Integration

Building X Security Manager Mobile Access now integrates with Apple Wallet, delivering a faster and more intuitive access experience for iOS users.

Simply hold your iPhone or Apple Watch near a compatible card reader for instant entry, combining the convenience of a physical card with the efficiency of NFC technology.

This integration eliminates delays common with Bluetooth systems and offers a streamlined, payment-like access method through a familiar Apple interface.



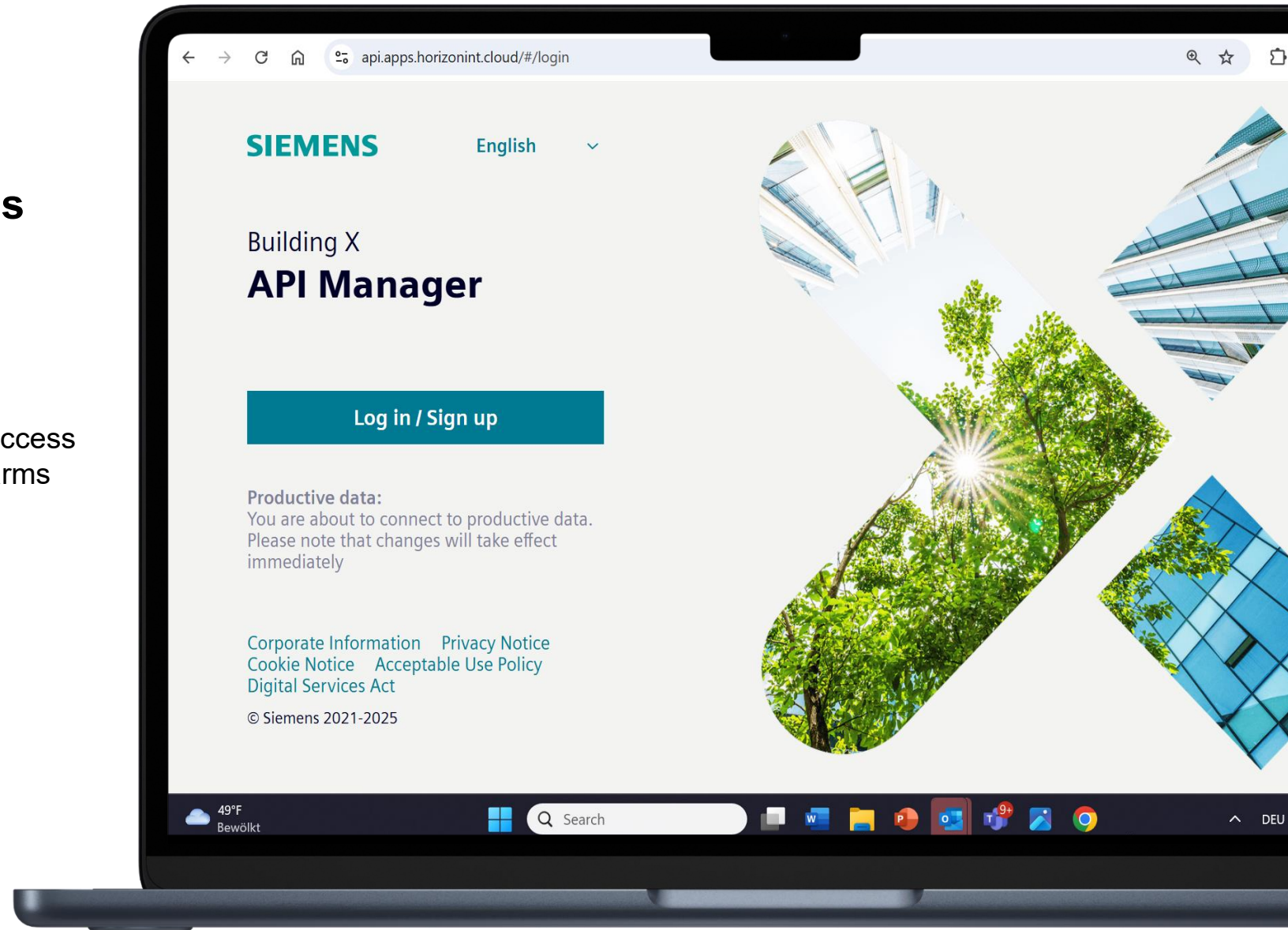


## Benefit from Tailored Security Solutions with Open Security APIs

Leverage **Building X Security Manager APIs** to customize and enhance security operations with seamless integration.

The Security APIs are cloud-based offerings within Building X that are used to manage identities and access privileges and read security events and security alarms via APIs.

- Building Security Identities and Privileges API
- Building Security Alarms and Events API
- Building Security Workflow API
- Building Security SCIM API





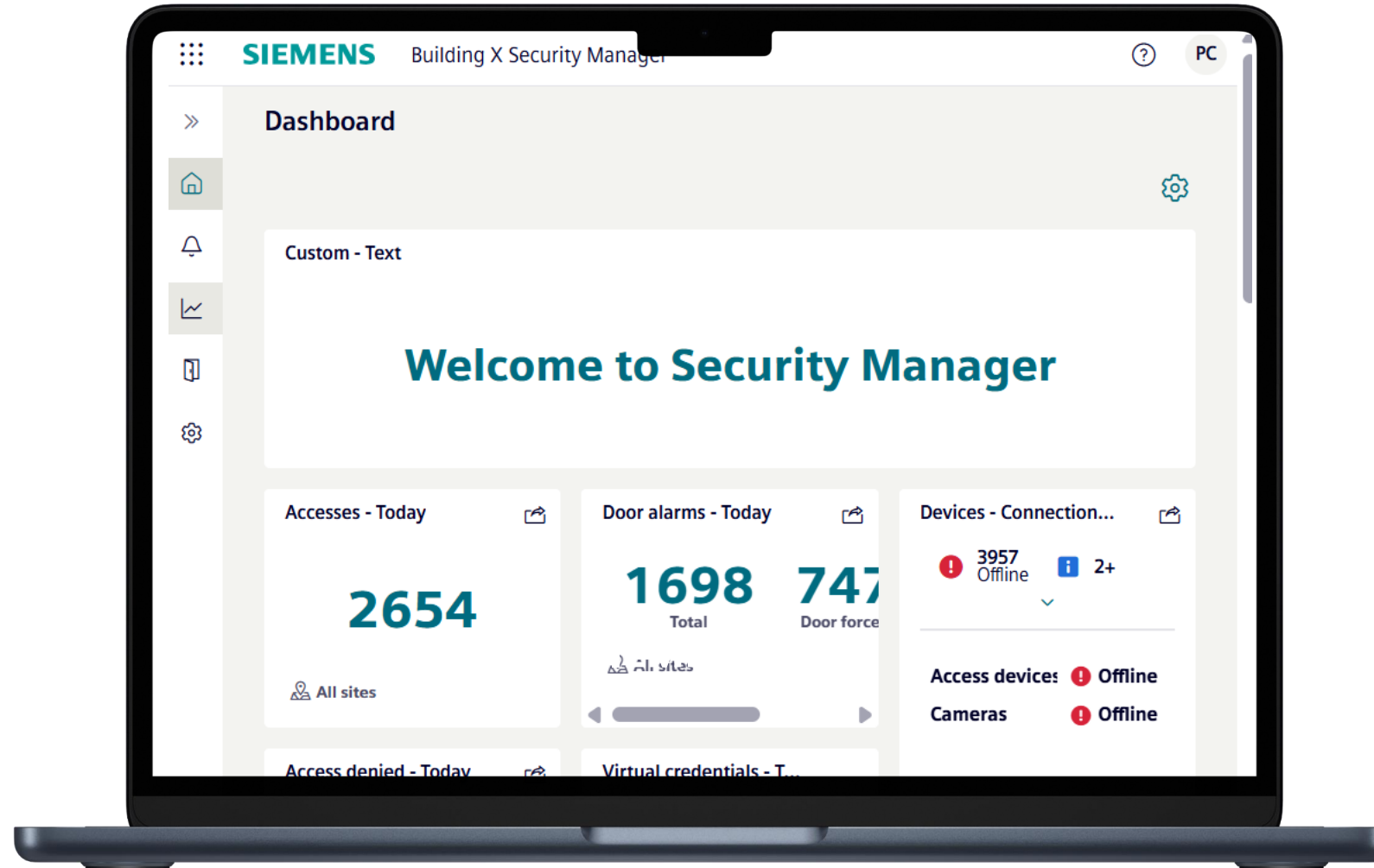
**Protect People & Assets** – Intrusion detection fully integrated into Security Manager for real-time protection and faster incident response.

**Unified Platform** – All Security Manager **access functionalities** (alarms, logs, workflows, access rights) are also available within Siveillance Intrusion.

**Mobile Convenience** – **Apple Wallet, Apple Watch** enable seamless, secure door access anytime

**Better Identity Management** – Centralized user credentials and privileges reduce errors and strengthen compliance.

**Self-Service Tools** – Empower users with request/approval workflows, reducing admin overhead.

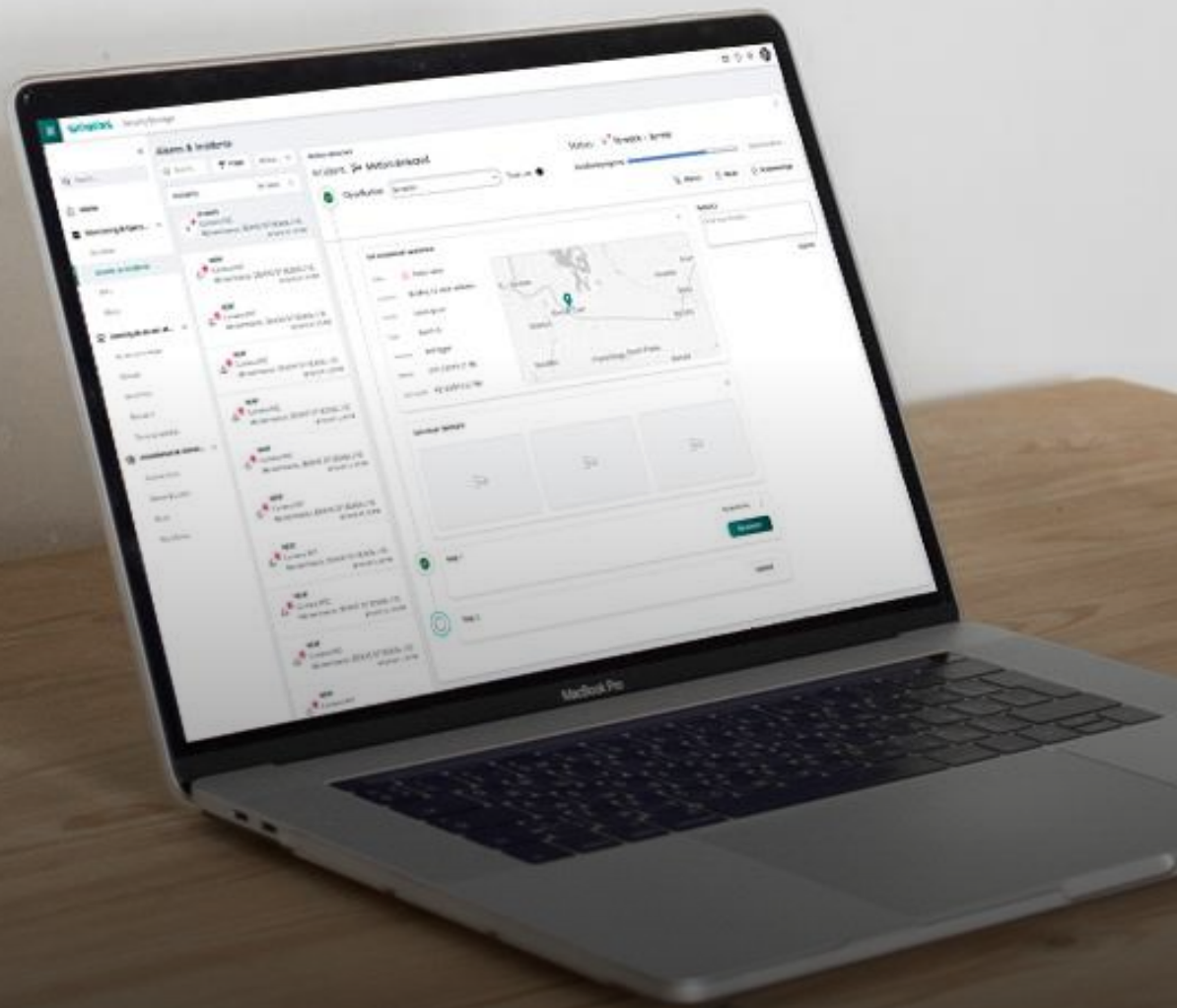




**With real-time data that we collected with the Building X portfolio we quickly became aware of the 60 – 70% drop in building occupancy. With this newfound focus, we could more easily channel our efforts in preserving resources.**

**Michél Moussa**  
CEO of Siemens Real Estate, Sweden





### **Physical Identity & Access Management**

Flexible management of access to doors and buildings with different tokens or a smartphone, predefined workflows and centralized identity and access management to make security tasks easier

### **Security Alarms & task management**

Provide “out-of-the-box” dynamic standard operating procedures (SOPs) to resolve incidents

### **Security Monitoring and Insights**

Visualization of site entry points, analysis of room utilization, identification of maintenance candidates to improve overall security

### **Extend on-premise systems**

Re-use of existing HW (SiPass, SIPOINT, Siveillance Video) to protect your investment

### **Cloud-based access control**

Low-invest for greenfield customers since no server is required on-premise, when using the cloud-connected door controller (ACC-AP)

## ... value across industries and countries



### Siemens Real Estate

**Sweden**  
Real Estate Management

- 40% less food waste
- 20% savings in cleaning cost



### SYK

**Finland**  
University Facilities

- Reduce operational cost
- Increase energy efficiency
- Future proof buildings for 11,000+ students



### Cloudline Solutions

**USA**  
System Integrator

- Tailored customer apps
- Cost and time effective solution delivery



### Prodea Investments

**Greece**  
R.E. Investment Company

- Create transparency on energy consumption
- Meet sustainability goals & better tenant service



### Mobile Energietechnik

**Germany**  
Service Provider

- Continuous service delivery thanks to efficient operations
- Prolonged asset value

**Siemens Mission is to support your digital and sustainable transformation**

**Invested in your sustainability goals**

**€4 bn**

Energy savings for customers

**25+ yrs.**

Offering energy and performance services

**Infrastructure digitalization pioneers**

**3.2 m**

Devices connected to Building X

**150+**

Digital applications and offerings



2024 SmartScore Accredited Solution

**300**

Global Locations

**10k+**

Specialist Service Technicians

# Contact

Published by Siemens Smart Infrastructure

Siemens Switzerland Ltd  
Smart Infrastructure  
Global Headquarters  
Theilerstrasse 1a  
6300 Zug  
Switzerland  
[contact@siemens.com](mailto:contact@siemens.com)

For more information:

[siemens.com/smart-infrastructure](https://www.siemens.com/smart-infrastructure)