

SIEMENS DIGITAL INDUSTRIES SOFTWARE

# Rapid factory transformation

Modernizing your operations by implementing intelligent technologies

## Customer and market trends shaping the future of the automotive industry in four dimensions



### Vehicle features

Vehicle electrification  
Software-defined car  
ADAS and AV



### Glocalization

Regional demands  
Market fluctuations  
Trade disruptions



### Workforce

Technology innovations  
Social changes  
Talent retention

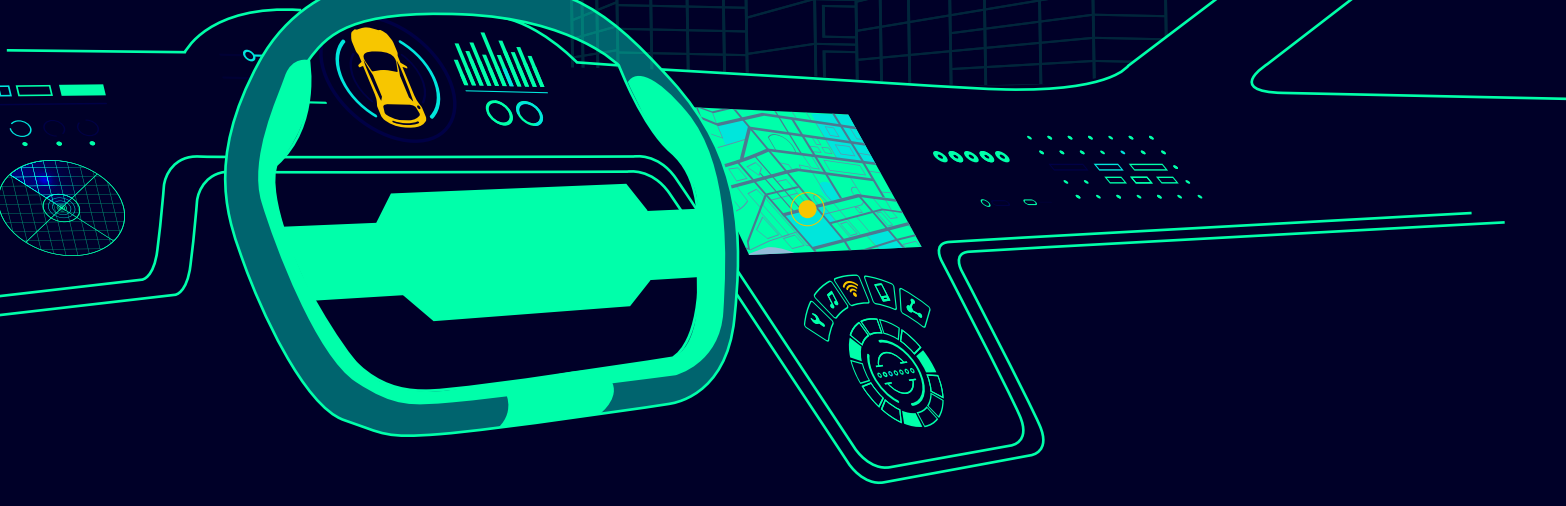


### Sustainability

Regulatory requirements  
Customer expectations  
Circularity

## Vehicle features

Adoption of digital cockpit and ADAS domain controllers will increase significantly within the next three years.



Over 80% of vehicle features will be driven or implemented by software.

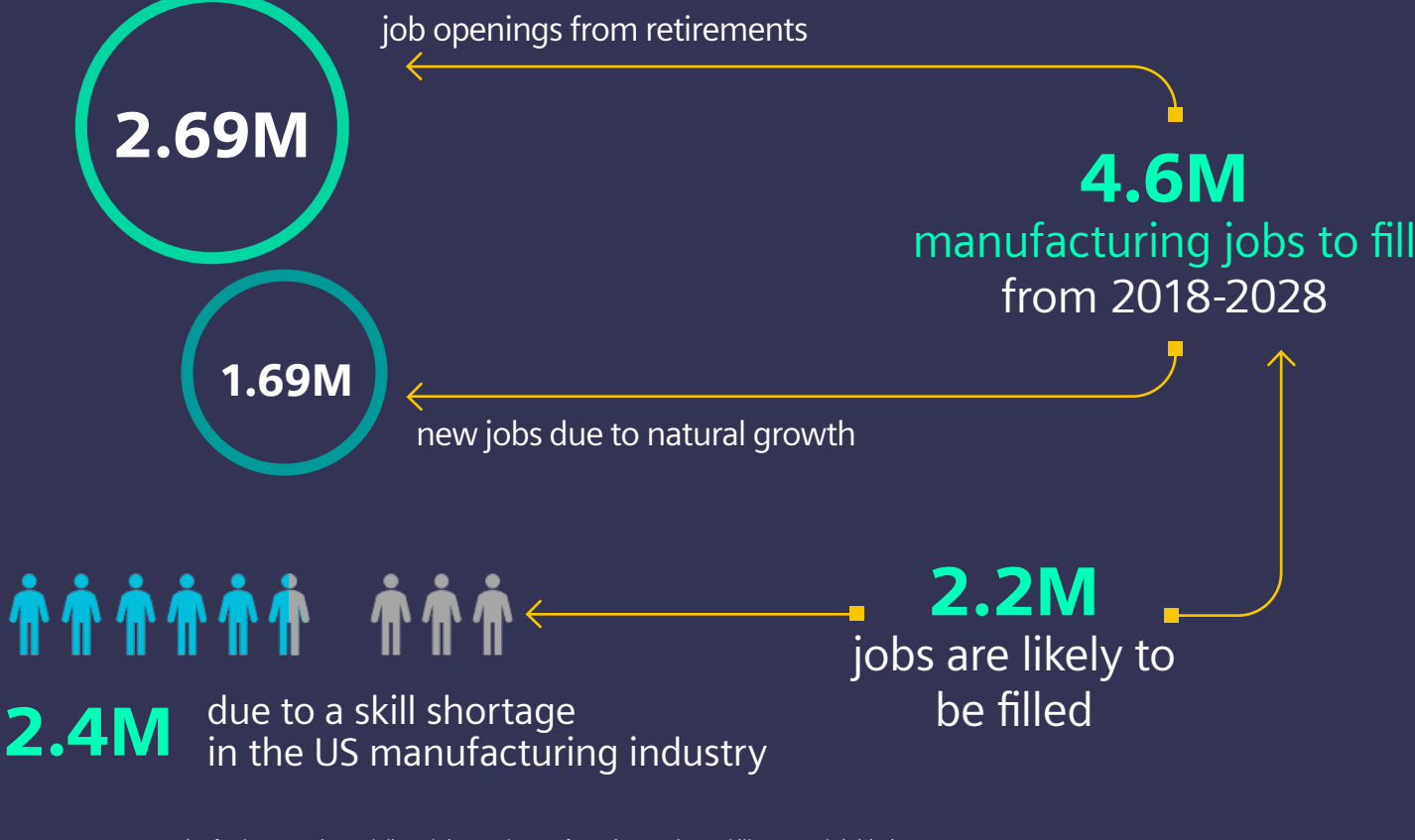
Source: Informa Tech Automotive Group

## Workforce

A skill gap in the US may leave an estimated

**2.4 million positions unfilled**

between 2018 and 2028



Source: BLS Data, OEM (Oxford Economic Model), Deloitte and Manufacturing Institute skills research initiative.

## Sustainability

**ZERO**  
emission target

2030



## How can you...

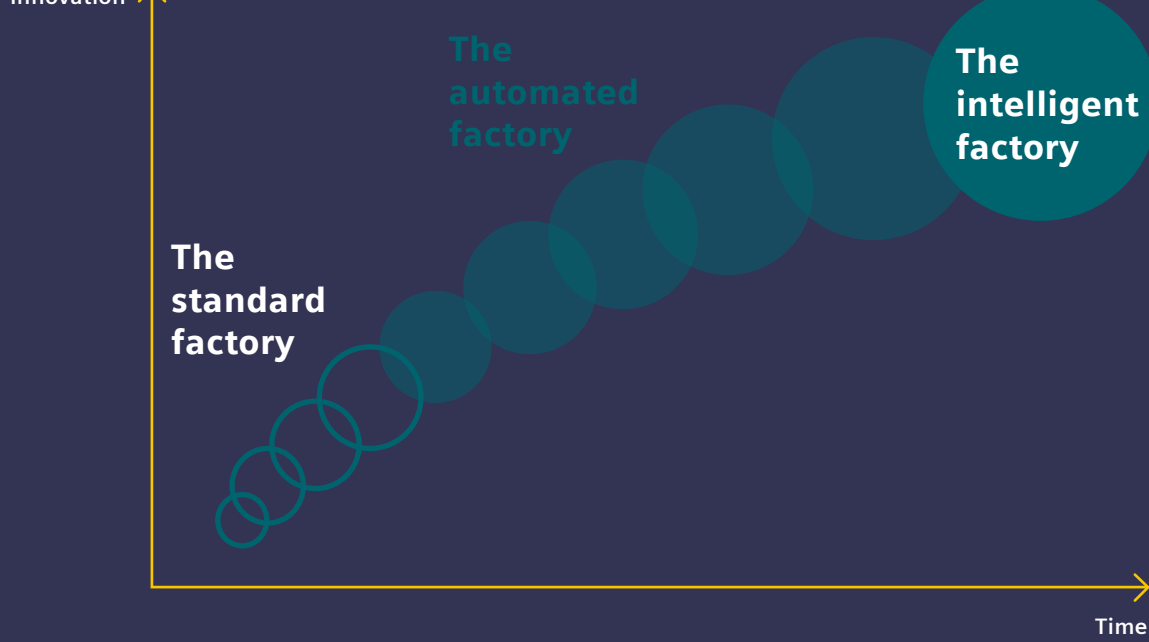
Keep up with technology

Manage flexible supply chain

Comply to regularity mandates

Up-/Reskill the workforce

Selective changes will not suffice in this new normal, you need to address changes **comprehensively**



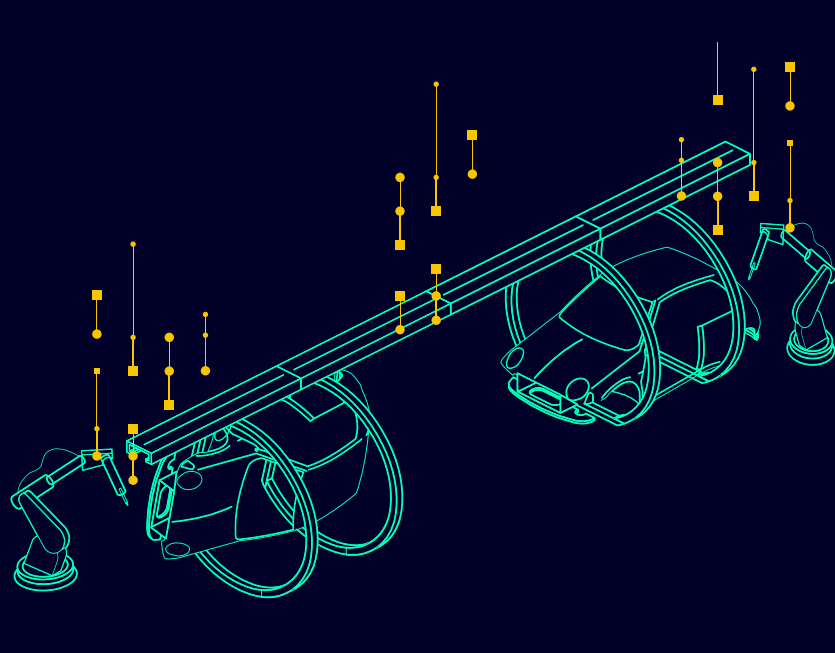
**70%** of companies are already benefiting from smart manufacturing solutions.

Source: McKinsey

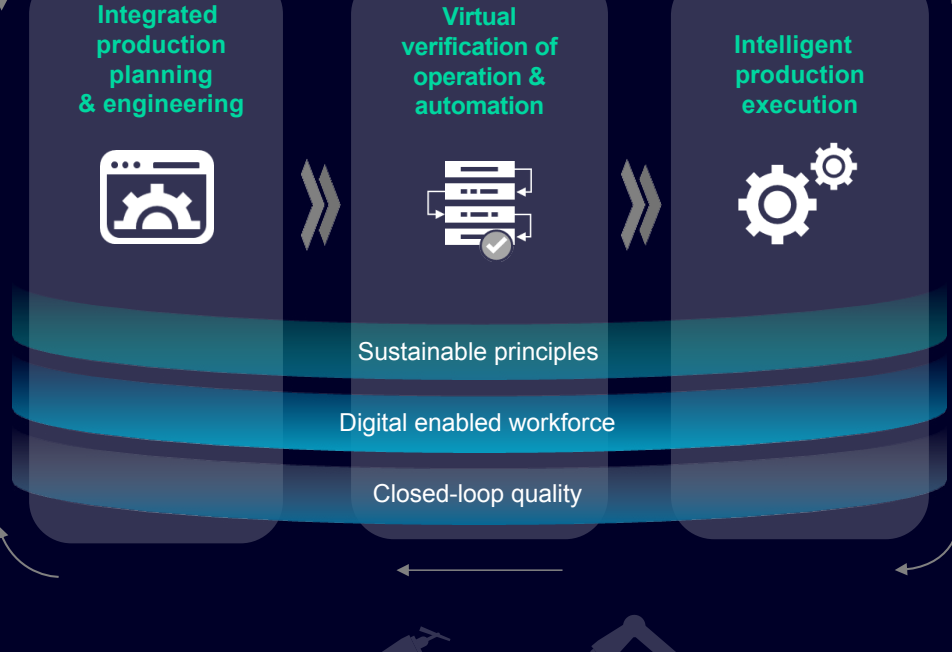
Are you one of them?

## Siemens can help

Enable flexible, efficient, and sustainable operations by updating and connecting plant processes, people, and next-level automation. Leverage closed-loop manufacturing and technologies like AI, ML, the IIoT, and the metaverse to predict operational issues, train workers faster, drive continuous improvement, expedite launches and line-changeovers, and maximize resilience in the face of changing demands and manufacturing disruptions.



## Rapid factory transformation



Transform your operations with cutting-edge manufacturing solutions to deliver high-quality products on time, all the time