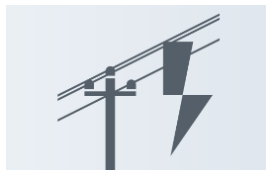


SICAM Localizer Package

Product Sheet and Specific Terms



SIEMENS

SICAM Localizer is a cloud-based application which enables power grid operators to monitor the operational status of their overhead line distribution grid networks. This application enables them to quickly locate faults by using SICAM Fault Sensor Indicator (FSI) & SICAM Fault Collector Gateway (FCG) devices thus optimizing the maintenance activities and reducing operational expenditure. The SICAM Localizer Package consists of the MindSphere application SICAM Localizer and selected MindSphere Resources which are required to access the Platform and to utilize the application.

Prerequisites

Data Sources	<p>As of the date of release of this Product Sheet and Specific Terms only the following Data Sources can be used to supply data to SICAM Localizer:</p> <ul style="list-style-type: none"> • SICAM FSI 6MD2314x via SICAM FCG (MLFB: 6MD2340-3JM71-8AA2) with minimum firmware version V2.30 • The SICAM FCG device is equipped with the IoT protocol driver "MCL Library"-Version 3.0. SICAM FCG has a built-in web-based UI which allows you to configure the parameters, display error and event log, upgrade firmware and download the configuration. <p>The configuration and onboarding of such SICAM FSI and FCG devices is not part of our Services. It is your responsibility to select, procure, configure, onboard and operate the SICAM FCG and SICAM FSI devices.</p>
Web browser and operating systems	<p>SICAM Localizer is a web-based application specifically optimized for use on Desktop PCs (Linux, Mac, Windows Operating systems) or smart phones that operate on Android OS (at least Android 7.0 or higher) that support Google Chrome web browser. The recommended screen resolution is 1920x1080 or higher. The application requires a recent version of Google Chrome, Mozilla Firefox or Opera. The use of Google Chrome is recommended.</p>
Internet connection	<p>A secure, stable internet connection is required to enable the SICAM FCG to connect and exchange data with MindSphere. The bandwidth of your Internet connection will determine your experience of the performance of the Services.</p>

Description of the SICAM Localizer application

General	<p>The SICAM Localizer application allows you to visualize and evaluate load currents at various points of your overhead line distribution grid feeder. The following views are provided as part of this application and are described in more detail below:</p> <ul style="list-style-type: none"> • Grid • Load Analysis • Fault • Event • Asset Configuration • Firmware Configuration
Grid	<p>In the Grid view, SICAM FCG locations are depicted geographically with an integrated Google Maps view. All locations with an active event (e.g. a fault) are highlighted in the map. On selection of any asset on grid page, you can view the asset details and all the associated active event list from the right-side panel. Alternately, you can select an active event from the right-side panel and the map will zoom to the respective device location belonging to that event. You can also visualize the section of the feeder line which is more prone to faults in Fault prone <i>zone</i> view by clicking on the Fault view icon. Additionally, you can acknowledge the alarm giving an indication to other Users that someone is taking care of the faulted section.</p>
Load Analysis	<p>In the Load Analysis view, you can analyze the performance of a selected feeder or a phase of the feeder in a configurable time frame. You can perform Load analysis using the following measured values: average current, maximum current, minimum current or instantaneous current. Graphical representation of current for the phases A, B, C [y-axis] in respective group and the date and time [x-axis] can be visualized on the PC/smartphone screen. Additionally, you can download a trend report in Excel format for your records / use.</p>
Faults	<p>In the Fault view, you can perform an easy analysis of temporary/permanent <i>phase faults</i> and <i>di/dt</i> faults which have occurred in the feeder. You can see the fault records associated with the fault event via the graphical representation (under the Trends tab of the Faults section) and in the tabular format (under the Reports tab of the Faults section). The duration of the Faults can be filtered by the date range. Additionally, you can also download a trend report in Excel format for your records / use.</p>
Events	<p>In the Events view, you can visualize a report of events which have occurred on phases A, B, C of the selected feeder (other than fault events) like voltage presence / absence, FSI Battery status, reset commands. The duration of the Event Log can be set by a date range.</p>
Asset Configuration	<p>The Asset configuration functionality enables you to create Assets in SICAM Localizer that will receive, and report data associated with the devices (SICAM FCG/SICAM FSI). The creation of Assets is done by entering asset-related details and scanning the QR code on SICAM FCG/SICAM FSI via QR Code scanner /Mobile Camera connected to device running SICAM Localizer.</p>
Firmware Configuration	<p>With the Firmware Configuration functionality, you can remotely upgrade the firmware of the SICAM FSI and FCG devices. The SICAM FCG and FSI firmware is not part of the Services and you may download from the Siemens Internet page https://support.industry.siemens.com/cs/start?lc=en-WW or is distributed by the Siemens customer care representative or via sales channels.</p>

E-mail notifications	<p>Upon enabling the e-mail notifications, the User will receive periodic reports to the registered e-mail address. This e-mail includes:</p> <ul style="list-style-type: none"> • Fault Prone Zone report • Transformer overload report
SMS notifications	<p>The User can register a phone number for receiving SMS notifications in case of a fault. This SMS includes:</p> <ul style="list-style-type: none"> • The time stamp of the fault • The name of the Asset • Brief information about fault • A link to the FCG location in SICAM Localizer application.
Application permissions	<p>SICAM Localizer application is operated in data centers in the Area European Union and processes the following data:</p> <ul style="list-style-type: none"> • Time series data which includes the variables received from an asset within defined continuous time cycles. • Asset configuration data which describes the asset (e.g. asset name, location). • Event data which includes the variables received from an asset. • Fault data which includes the variables received from an asset. <p>The application performs the following activities which modifies or amends Your Content in your Account on your behalf:</p> <ul style="list-style-type: none"> • Evaluate and process information presented in different views within this application and store the results as time series or event data. • Update asset configuration data in order to use the functionalities of this application. • Store file data containing application settings changed by the User.

Description of MindSphere Resources

The following MindSphere resources (“MindSphere Resources”) are included in the SICAM Localizer Package.

Base Tenant	<p>The Base Tenant provides you with a dedicated Account (also referred to as “Tenant”) on MindSphere. It enables you to login to your Account via the respective URL provided by us and is required for use of the application and MindSphere Resources.</p> <p>Base Tenant includes 1 Admin User and provides you with the following administration tools available on the MindSphere Launchpad:</p> <ul style="list-style-type: none"> • Usage Transparency: provides information regarding your consumption of MindSphere Resources. • Settings: allow managing Users, permissions, rights, roles, groups, Collaborations, subtenants and tenant provider information. For every User, an individual login is required. Users are also permitted to access and utilize the user management for the purpose of receiving a service from you. However, a user that receives a service from you shall not be granted with administration rights, except for administration rights that are offered by the user management of a subtenant. • Asset Manager: use Asset Manager to onboard & offboard agents to your Account; configure assets, asset types and aspect types; manage the Sharing of assets under a Collaboration between Accounts using Cross-Tenancy. The User that is entitled to administrate the Asset Manager may permit users of a subtenant who receive a service from you to directly access the Asset Manager in relation to the respective subtenant. • Upgrade: use Upgrade to order available upgrades to your subscribed and additionally available MindSphere Resources (e.g. increase Users or agents);
-------------	--

	<p>get an overview of your requested and completed upgrades; manage pending upgrade requests (authorized Users only).</p>
User	<p>It allows a defined number of Users to access your Account and use the application.</p>
Agent	<p>An agent is a software as part of a hardware device (e.g. SICAM FCG) or in the form of an application provided by Siemens or a Third Party which you connect to your Account and which can ingest data into your Account and send data to one or more asset instances.</p>
Asset Type	<p>Asset type describes the type of an asset (e.g. SICAM FCG) including one or several attributes. An asset type is a template that describes the attributes of a homogenous group of physical or logical assets, which is used for asset modeling.</p> <p>An asset type is a grouping of assets with common characteristics that distinguish those assets as a group or class.</p>
Asset Instance	<p>Asset instance reflects a physical and/or logical device within your Account, e.g. a specific silo within a plant would be an asset instance. Each instance belongs to an asset type. (e.g. SICAM FCG).</p>
Time Series Data Ingest Rate	<p>Time series data ingest rate represents the rate at which the sensor data is ingested into the Platform (e.g. measured values, faults / events registered in SICAM FCG). Data ingest is based on number of assets, number of variables per asset, size per variable including overhead, read cycle interval and sending frequency. This depends on the size of the requests containing time series sent from the customer to the Platform. Time series data ingest rate is restricted to a maximum of 100 KB/s per asset.</p>
Time Series Data Storage	<p>Time series data storage represents the total volume of time series data (e.g. measured values, faults / events registered in SICAM FCG) ingested and stored in the Platform for an Account.</p>
Notifications	<p>Sending SMS and/or e-mails leverages the MindSphere Notification Service. The terms and conditions set out in the MindSphere Supplemental Terms for Notification Service available on www.mindsphere.io/terms also apply to your use of notifications. With respect to SMS notification the number of notifications added to the Package determines how many SMS notifications you can trigger in total each month.</p>
IoT File Storage	<p>IoT File storage represents the total volume of files (e.g. Firmware files and configuration files) uploaded and stored in the Platform for an Account.</p>
Subtenants	<p>A subtenant is a certain limited resource of a tenant and represents a subpart of your own real-world organization or the real-world organization of a third party that receives a service from you. It is also used to assign applications and access to applications.</p> <p>Subtenants can be ordered by activating the SICAM Localizer Package Subtenant Upgrade within SICAM Localizer application and can be used by you to provide your customers with the SICAM Localizer Package as part of OEM Services as described in the <i>Specific Terms for MindAccess IoT Value Plan</i> available on www.mindsphere.io/terms. If you provide your customers with OEM Services, the <i>Specific Terms for MindAccess IoT Value Plan</i> available on www.mindsphere.io/terms shall apply accordingly as if you had subscribed to a MindAccess IoT Value Plan. In particular, your customer contract must, at a minimum, contain the full substance of the Minimum Terms (including the Acceptable Use Policy).</p>

SICAM Localizer Package Size Overview

Base subscription	SICAM Localizer Package Starter
The MindSphere Resources included in SICAM Localizer Package Starter are suitable to connect 5 SICAM FCG devices to the Platform.	
SICAM Localizer application	✓
Base Tenant ¹	✓
Users	5
Agents	5
Asset Types	4
Asset Instances	5
Time Series Data Ingest Rate	0.05 KB/s
Time Series Data Storage	11.5 GB
IoT File Storage	0.5GB
Notifications per month	40 SMS notifications (corresponds to 20 Notification Modules)
MindSphere Resources upgrade (optional)	SICAM Localizer Package Station Upgrade
Fee	6 €/month ²
The SICAM Localizer Package Station Upgrade contains the following additional MindSphere Resources and is suitable to connect 1 additional SICAM FCG to the Platform. This upgrade can only be activated within the SICAM Localizer application.	
Agents	1 additional Agent
Asset Instances	1 additional Asset Instance
Time Series Data Ingest Rate	0.01KB/s additional Time Series Data Ingest Rate
Time Series Data Storage	0.5GB additional Times Series Data Storage
MindSphere Resources upgrade (optional)	SICAM Localizer Package Notifications Upgrade
Fee	1 €/month ²
The SICAM Localizer Package Notifications Upgrade contains the following (additional) MindSphere Resources and is suitable to send 50 (additional) SMS Notifications. This upgrade can only be activated within the SICAM Localizer application.	
Notifications per month	50 additional SMS notifications (corresponds to 25 Notification Modules)
MindSphere Resources upgrade (optional)	SICAM Localizer Package Subtenant Upgrade
Fee	9 €/month ²
The SICAM Localizer Package Subtenant Upgrade contains the following MindSphere Resources and is suitable to add 1 Subtenant to your Tenant. This upgrade can only be activated within the SICAM Localizer application.	
Subtenants	1 Subtenant
¹ You can decide if a Base Tenant shall be created and provisioned to you as part of your SICAM Localizer Package Starter or if the SICAM Localizer Package Starter (without a Base Tenant) shall be added to an existing Account (Base Tenant or MindAccess IoT Value Plan Account). A Package can only be added to an existing Account if the Account and Package are hosted in the same data center location. If you decide to add various Packages to one existing Account, please note the following: The MindSphere Resources included in the various Packages will be combined under one Account; it is your responsibility to allocate the MindSphere Resources to the various Packages according to your needs; ² If a fee is displayed in a different currency on the product detail page for SICAM	

Localizer Package Starter on <http://www.mindsphere.io/store> in your country of residence at the date of activating the SICAM Localizer Package Station Upgrade, such displayed fee will be charged.

Specific Terms

Subscription Term for base subscription, termination	<p>The initial Subscription Term for SICAM Localizer Package Starter is 12 months. Following expiration of the preceding Subscription Term, the subscription automatically renews with a Subscription Term of 12 months at the then-current terms made available under www.mindsphere.io/terms, unless either Party notifies the other Party at least 60 days prior to the then-current expiration date that it has elected not to renew.</p> <p>Upon expiration of the Subscription Term for SICAM Localizer Package Starter without renewal, any upgraded MindSphere Resources will also be deactivated and cannot be used any longer.</p>
MindSphere Resources upgrade, activation and deactivation	<p>Any of the upgrades described herein may be activated or deactivated within the application at any time during a valid Subscription Term for SICAM Localizer Package Starter.</p>
Payment Terms	<p>The subscription fee for SICAM Localizer Package Starter is charged yearly in advance.</p> <p>Upon activation and until deactivation of the SICAM Localizer Package Station Upgrade and/or the SICAM Localizer Package Notifications Upgrade within the application, the fee for the relevant upgrade is charged on a daily basis monthly in arrears.</p>
Data center location	<p>Your Content processed by the MindSphere Resources is stored at rest in Area European Union as set out in the MindSphere Supplemental Terms available on www.mindsphere.io/terms.</p>
Adaptation of fees	<p>The fees during any renewed Subscription Term will be the same as during the immediately prior Subscription Term, unless we notify you of a Fee Change at least 90 days prior to the end of the then-current Subscription Term, in which case the communicated Fee Change will be effective upon subscription renewal. During the Subscription Term, we may change or add new fees (collectively referred to as "Fee Change") due to and to the extent required to reflect: (i) changes in the quality or functionalities of the Service; (ii) material changes in market conditions; (iii) general increases in wages or other employment costs; and/or (iv) changes in procurement costs due to price changes made by our suppliers, in each case to the extent that the changes affect our provision of the agreed Service. We will notify you of any Fee Change at least 60 days in advance of the effective date of the Fee Change.</p>
Service Level Agreement	<p>The Monthly Uptime Percentage for the SICAM Localizer Package is 90%. Monthly Uptime Percentage is defined in the MindSphere Supplemental Terms available on www.mindsphere.io/terms.</p>
Data use rights	<p>During and after the Subscription Term, Siemens and its business partners may use Collected Data for Siemens' internal purposes, e.g. development and improvement of products and services. Use of Collected Data in accordance with this Section will be at Siemens' risk. Should Siemens divest substantially all of its assets of a business or should an Affiliate cease to be an Affiliate of Siemens AG, the purchaser of the divested business or the former Affiliate, respectively, may use the Collected Data received by such business or Affiliate before divestment, only as permitted in this Product Sheet and Specific Terms.</p> <p>"Collected Data" means the following data collected by this application:</p> <ul style="list-style-type: none"> • Asset configuration data (asset name, location). • Time series data relating to device operation and configuration.

	<ul style="list-style-type: none"> • Event data relating to device operation. • File data relating to device operation and configuration. • Processed data (KPIs, histograms, events, comments, plans). • Logs without personal data (app log, system log). <p>You acknowledge that Collected Data may include copies made by the application from certain parts of Your Content for use in accordance with this Product Sheet & Specific Terms.</p>
Third Party Terms	<p>The application contains Third Party services, including open source software, or software-related managed services, which are subject to additional or different terms, license rights, or require certain notices by their licensor, which we are obliged to pass on to you as your licensor and to which you agree to abide ("Third Party Terms").</p> <p>The Third-Party Terms are made available via the following web link: https://sie.ag/MindSphere-ThirdParty_SICAMLocalizer.</p> <p>In order to offer you certain location-based functions, we may use "Google Maps" (e.g. to display the asset's position or to let you obtain directions to your local Siemens point of contact). When you use Google Maps in a country of the European Economic Area or Switzerland, your personal data will be processed by Google Ireland Ltd., Gordon House, Barrow Street, Dublin 4, Ireland, otherwise by Google LLC, 1600 Amphitheatre Parkway, Mountain View, CA 94043, USA (each referred to as "Google"). The processed personal data may include, inter alia, your device's IP address and your location. Location data can only be processed if you granted permission to access, or actively provided your location data within the SICAM Localizer application.</p> <p>The data controller responsible for the processing of your personal data in connection with Google Maps is Google; Google's privacy notice can be found at https://www.google.com/policies/privacy.</p>
Changes to the Product Sheet and Specific Terms	<p>We may update this document from time to time during a Subscription Term in order to reflect any changes agreed with or imposing by our subcontractors (including changes in open software license terms) or when we introduce new MindSphere Resources, features, supplements, enhancements or capabilities (e.g. that were not previously included with the subscription but added for no additional fee). Changes shall become binding upon release of a new version for this document on www.mindsphere.io/terms.</p>
Support	<p>Support is available 24 hours a day in English and German. Support requests can be addressed to the Customer Support Center (CSC) of Siemens: Phone: +49 911 2155 4466 For more information, refer to https://new.siemens.com/global/en/products/energy/contact.html</p>

Export Control Regulations

Applicable for SICAM Localizer application and MindSphere Resources.

AL	N
ECCN	N

Security Information

General	In order to protect plants, systems, machines and networks against cyber threats, it is necessary that you implement and continuously maintain a holistic, state-of-the-art industrial security concept.
Access credentials	Authentication and authorization on User level based on username and password.

Definitions

MindSphere Launchpad	<p>After the login into your Account, the Launchpad appears. Similar to a desktop on any common operating system (OS), the MindSphere Launchpad facilitates starting various assigned applications.</p> <p>If you provide services to your customers, you must replace the Siemens service and support information provided in the MindSphere Launchpad with your companies' service and support information.</p>
SICAM FSI	SICAM FSI is an overhead line sensor that clamps onto the overhead line distribution grids and measures the load currents where it is mounted. It also has user configurable thresholds settings beyond which it communicates anomalies out of turn. Additionally, the sensors communicate periodic load profile values to the SICAM FCG enabling the utilities to have the last-mile visibility of their overhead line feeders.
SICAM FCG	SICAM FCG is a pole mounted remote terminal unit that collects data from over short-range wireless radio communication from SICAM FSI units. The SICAM FCG is also equipped with an on-board GPRS modem which connects to the SICAM Localizer MindSphere application via the embedded MindConnect Library IoT Driver.
General	Unless indicated otherwise, capitalized terms used in this document shall have the meaning given to them in this Product Sheet and Specific Terms or elsewhere in the MindSphere Agreement.