

A stylized, green butterfly valve icon is positioned to the right of the section header. The icon consists of two curved, overlapping shapes that resemble the wings of a butterfly valve, set against a dark background with faint, larger-scale gear-like patterns.

14. Butterfly Valves

Section 14. Butterfly Valves

Lugged, Wafer & Flanged

Standards of Design

Valve Construction Design	Confirmed to API 609
Hydro Testing	API 598
Fire Safe Design	API 607 Ed 4
End Connections	Flanged, Wafer, Lug and Welded
Dimension Standards	API 609 table 2, MSS-SP-68 Table 1, ISO 5752 ASME B16.5, B16.47, B16.34, DIN, MSS-SP-44, BS3293
Mounting Flange	ISO 5211

RATING	150lb	300lb	400lb	600lb	900lb
MAX. WORKING	285 PSI	740 PSI	990 PSI	1480 PSI	2220 PSI
TEST PRESSURE	450 PSI	1125 PSI	1500 PSI	2225 PSI	3350 PSI
OPERATING TEMPERATURE RANGE	-28 TO +540 DEG C	-28 TO +540 DEG C	-28 TO +540 DEG C	-28 TO +540 DEG C	-28 TO +540 DEG C

MATERIAL REQUIREMENTS: Carbon Steel, Alloy Steel, Stainless Steel, Duplex, Super Duplex, Inconel.

visit www.rbvenergy.com for more info

GENERAL NOTES: Please contact RBV Energy for any special material or dimensional requirements.

Max. working pressures stated are suitable for temperatures up to 121°C.

De-rating of max. working pressure will occur as the operating temperature increases above 121°C.

Section 14. Butterfly Valves

Lug Type



visit www.rbvenergy.com for more info

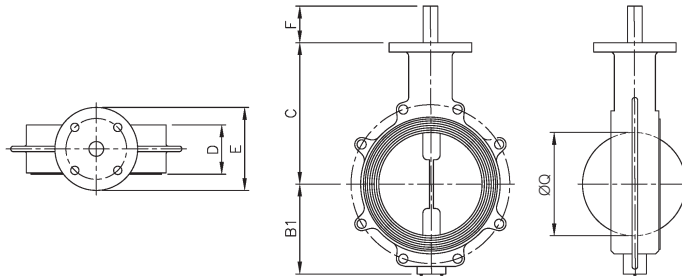


Table 14.1 ANSI Class 150

Valve Size (inch)	Valve Size (mm)	B1	C	D	E	F	ØQ	Weight (kg)
2	50	103	152	60.3	102	32	52	7.0
2½	65	103	152	47.6	102	32	62	6.5
3	80	103	159	47.6	102	32	74	7.0
4	100	127	178	54.0	102	32	98	12.0
5	125	141	192	57.2	102	32	124	14.0
6	150	163	203	57.2	152	32	147	19.0
8	200	192	238	63.5	152	51	198	29.0
10	250	225	270	71.4	152	51	247	49.0
12	300	256	311	81.0	203	76	293	73.0
14	350	294	337	92.1	203	76	322	99.0
16	400	319	368	101.6	203	76	368	114.0
18	450	341	406	114.3	203	108	415	162.0
20	500	383	443	127.0	203	108	459	227.0
22	550	443	500	170.0	203	108	531	305.0
24	600	443	500	154.0	203	108	552	340.0
26	650	521	622	210.0	241	178	621	460.0
28	700	521	622	220.0	241	178	634	570.0
30	750	521	622	187.0	241	178	695	617.0
36	900	616	721	216.0	241	203	860	1,021.0

14.2

GENERAL NOTES: Dimensions are in mm. Higher pressure ratings available on request.

Table 14.2 ANSI Class 300

Valve Size (inch)	Valve Size (mm)	B1	C	D	E	F	ØQ	Weight (kg)
2	50	103	152	60.3	102	32	52	8.0
2½	65	103	152	47.6	102	32	62	8.5
3	80	118	168	47.6	102	32	74	9.0
4	100	140	191	54.0	102	32	98	12.0
5	125	141	192	58.7	102	32	124	14.0
6	150	170	222	58.7	152	32	147	25.0
8	200	205	257	73.0	152	51	198	36.0
10	250	238	289	82.6	152	76	247	62.0
12	300	268	330	92.1	203	76	293	84.0
14	350	311	365	117.5	203	108	322	154.0
16	400	340	408	133.4	203	108	368	196.0
18	450	375	432	149.2	203	108	415	250.0
20	500	414	513	158.8	191	165	459	386.0
24	600	492	594	181.0	241	173	554	580.0

visit www.rbvenergy.com for more info

GENERAL NOTES: Dimensions are in mm.
Higher pressure ratings available on request.

Section 14. Butterfly Valves

Wafer Type



visit www.rbvenergy.com for more info

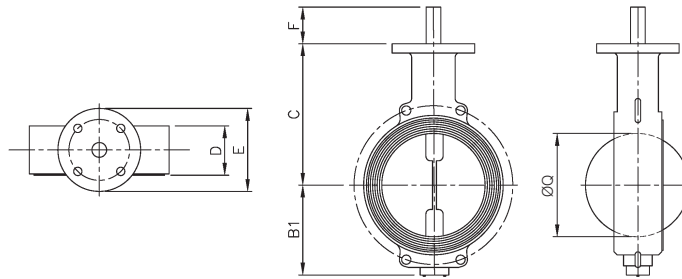


Table 14.3 ANSI Class 150

Valve Size (inch)	Valve Size (mm)	B1	C	D	E	F	ØQ	Weight (kg)
2	50	103	152	60.3	102	32	52	4.0
2½	65	103	152	47.6	102	32	62	4.5
3	80	103	159	47.6	102	32	74	5.4
4	100	127	178	54.0	102	32	98	8.2
5	125	141	192	57.2	102	32	124	10.2
6	150	163	203	57.2	152	32	147	14.0
8	200	192	238	63.5	152	51	198	23.0
10	250	225	270	71.4	152	51	247	35.0
12	300	256	311	81.0	203	76	293	56.0
14	350	274	337	92.1	203	76	322	64.0
16	400	319	368	101.6	203	76	368	85.0
18	450	341	406	114.3	203	108	415	126.0
20	500	383	443	127.0	203	108	459	158.0
22	550	443	500	170.0	203	108	531	236.0
24	600	443	500	154.0	203	108	552	281.0
26	650	521	622	210.0	241	178	621	360.0
28	700	521	622	220.0	241	178	634	405.0
30	750	521	622	187.0	241	178	695	463.0
36	900	616	721	216.0	241	203	860	839.0

14.4

GENERAL NOTES: Dimensions are in mm. Higher pressure ratings available on request.

Table 14.4 ANSI Class 300

Valve Size (inch)	(mm)	B1	C	D	E	F	ØQ	Weight (kg)
2	50	103	152	60.3	102	32	52	4.0
2½	65	103	152	47.6	102	32	62	4.5
3	80	118	168	47.6	102	32	74	6.0
4	100	140	191	54.0	102	32	98	9.0
5	125	141	192	58.7	102	32	124	11.5
6	150	170	222	58.7	152	32	147	15.0
8	200	205	257	73.0	152	51	198	30.0
10	250	238	289	82.6	152	76	247	43.0
12	300	268	330	92.1	203	76	293	66.0
14	350	311	365	117.5	203	108	322	123.0
16	400	340	408	133.4	203	108	368	139.0
18	450	375	432	149.2	203	108	415	175.0
20	500	414	513	158.8	191	165	459	204.0
24	600	492	594	181.0	241	173	554	580.0

visit www.rbvenergy.com for more info

GENERAL NOTES: Dimensions are in mm.
Higher pressure ratings available on request.