



6. API Valves

API Plug Valves

Section 6c. API 6A Plug Valves

Plug Valves are designed and manufactured in accordance with the following specifications:-

API 6A	Specification for Wellhead and Christmas Tree Equipment
ANSI B31.3	Chemical Plant and Petroleum Refinery Piping
ASME VIII	Boiler and Pressure Vessel Code
NACE MR-01-75	Sulphide Stress Cracking Resistant Metallic Materials for Oilfield Equipment

Plug Valves are available in either lever, gearbox or remote operation for use in the following pressure ratings and services.

PRESSURE & TEMPERATURE RATINGS			
MAX. WORKING PRESSURE	5,000 PSI	10,000 PSI	15,000 PSI
TEST PRESSURE	7,500 PSI	15,000 PSI	22,500 PSI
PRODUCT SPECIFICATION LEVELS	1, 2, 3 & 4	1, 2, 3 & 4	1, 2, 3 & 4
API TEMPERATURE RATING	P (-29 DEG C) TO U (+121 DEG C)	P (-29 DEG C) TO U (+121 DEG C)	P (-29 DEG C) TO U (+121 DEG C)

MATERIAL REQUIREMENTS		
MATERIAL CLASS	BODY, BONNET, END AND OUTLET CONNECTIONS	PRESSURE CONTROLLING PARTS E.G. STEMS
AA - GENERAL SERVICE	CARBON OR LOW ALLOY STEEL	CARBON OR LOW ALLOY STEEL
BB - GENERAL SERVICE	CARBON OR LOW ALLOY STEEL	STAINLESS STEEL
CC - GENERAL SERVICE	STAINLESS STEEL	STAINLESS STEEL
DD - SOUR SERVICE**	CARBON OR LOW ALLOY STEEL*	CARBON OR LOW ALLOY STEEL*
EE - SOUR SERVICE**	CARBON OR LOW ALLOY STEEL*	STAINLESS STEEL*
FF - SOUR SERVICE**	STAINLESS STEEL*	STAINLESS STEEL*

**As defined in NACE MR-01-75 *In accordance with NACE MR-01-75

visit www.rbvenergy.com for more info

GENERAL NOTE: Please contact RBV Energy for any special material or dimensional requirements.

Section 6c. API Plug Valves



visit www.rbvenergy.com for more info

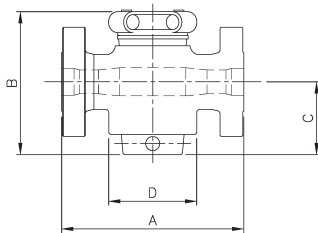


Table 6c.1 API Flanged Ends

SIZE	WP PSI	WEIGHT (KG)	ALL DIMENSIONS in mm			
			A	B	C	D
1" x 1 ¹ / ₁₆ " Flange	10000	47.6	342.9	235.0	115.9	187.3
	15000	50.8	342.9	235.0	115.9	208.0
1" x 2 ¹ / ₁₆ " Flange	10000	51.7	342.9	235.0	115.9	200.0
	15000	51.7	342.9	235.0	115.9	222.3
1.31" x 1 ¹ / ₁₆ " Flange	15000	53.5	342.9	257.2	136.5	222.3
1.31" x 2 ¹ / ₁₆ " Flange	15000	55.34	342.9	257.2	136.5	181.0
1.75" x 1 ¹ / ₁₆ " Flange	10000	53.5	342.9	273.1	142.9	187.3
	15000	53.5	342.9	273.1	142.9	208.0
2" x 2 ¹ / ₁₆ " Flange	10000	51.7	342.9	269.9	139.7	200.0
	15000	51.7	342.9	269.9	139.7	200.0
2.5" x 2 ¹ / ₁₆ " Flange	5000	127	619.1	311.2	165.1	241.3
	10000	127	619.1	311.2	165.1	241.3
	15000*	127	619.1	311.2	165.1	241.3
3" x 3 ¹ / ₁₆ " Flange	5000	144	619.1	330.2	206.4	266.7
3" x 3 ³ / ₁₆ " Flange	10000*	152	619.1	431.8	206.4	269.9
	15000*	152	619.1	431.8	206.4	278.3
3" x 4 ¹ / ₁₆ " Flange	5000	154	619.1	330.2	206.4	241.3
	10000*	154	619.1	431.8	206.4	241.3

GENERAL NOTE: *Gear operated

Section 6c. API Plug Valves

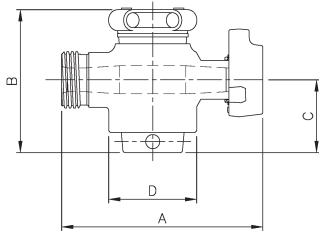


Table 6c.2 Hammer Lug Union Ends (Male & Female)

SIZE	WP PSI	WEIGHT (KG)	ALL DIMENSIONS in mm			
			A	B	C	D
3/4" x 2" 1502 Union	15000	29	268.3	235.0	115.9	136.5
1" x 2" 1502 Union	10000	24	268.3	235.0	115.9	136.5
	15000	24	268.3	235.0	115.9	136.5
1.31" x 2" 1502 Union	15000	45	352.4	257.2	136.5	181.0
1.31" x 2" 2202 Union	15000	45	355.6	257.2	136.5	181.0
1.75" x 2" 1502 Union	10000	45	352.4	273.1	142.9	181.0
	15000	45	352.4	273.1	142.9	181.0
2" x 2" 1502 Union	10000	44	352.4	269.9	139.7	181.0
	15000	44	352.4	269.9	139.7	181.0
2.5" x 3" 1502 Union	10000	89	431.8	311.2	165.1	241.3
	15000*	89	431.8	311.2	165.1	241.3
3" x 3" 1502 Union	10000*	87	431.8	330.2	206.4	241.3
	15000*	87	431.8	431.8	206.4	241.3

visit www.rbvenergy.com for more info

GENERAL NOTE: *Gear operated

Section 6c. API Plug Valves



visit www.rbvenergy.com for more info

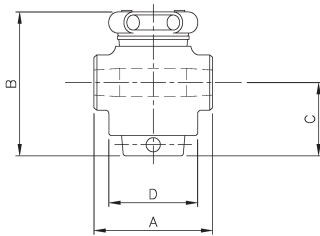


Table 6c.3 Female Line Pipe Ends

SIZE	WP PSI	WEIGHT (KG)	ALL DIMENSIONS in mm			
			A	B	C	D
2" x 2" LP Female	5000	33	215.9	269.9	139.7	181.0
	10000	33	215.9	269.9	139.7	181.0
3" x 3" LP Female	6000	67	282.6	330.2	181.0	238.1

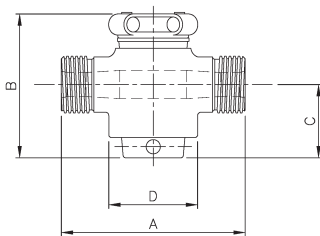


Table 6c.4 Male Line Pipe Ends

SIZE	WP PSI	WEIGHT (KG)	ALL DIMENSIONS in mm			
			A	B	C	D
3/4" x 2" LP Male	10000	19	228.6	235.0	115.9	136.5
1" x 2" LP Male	5000	16	228.6	235.0	115.9	136.5
	10000	16	228.6	235.0	115.9	136.5