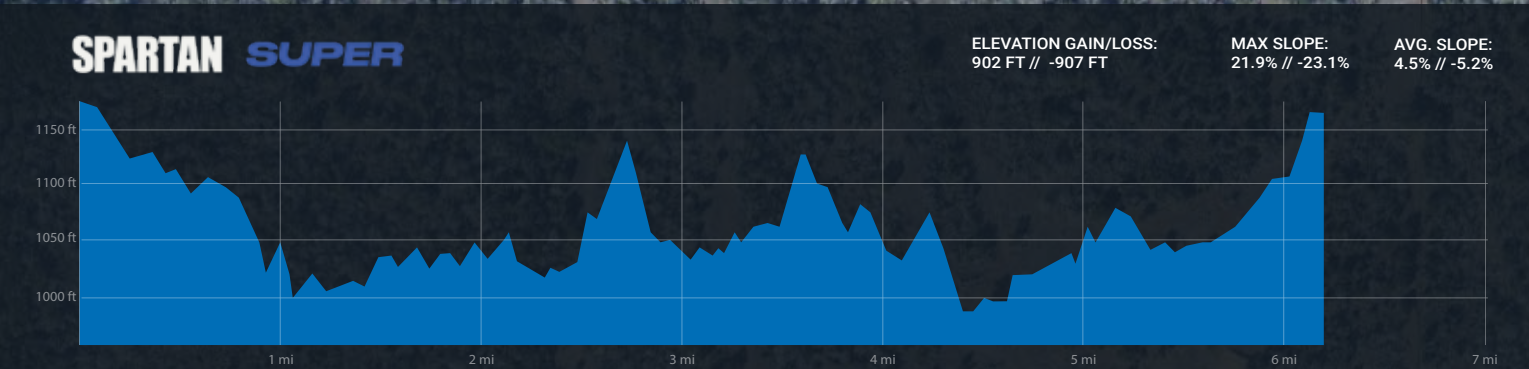
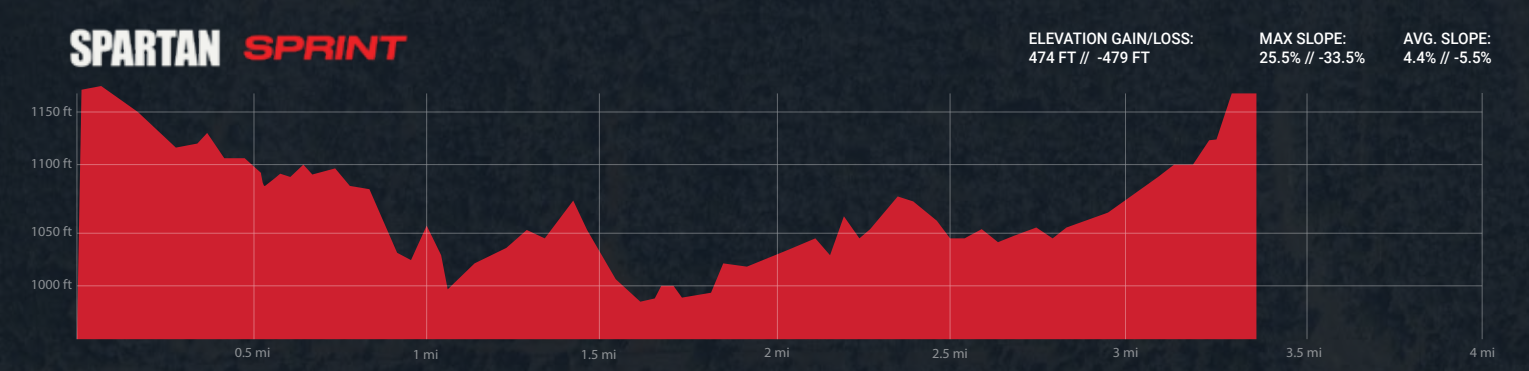




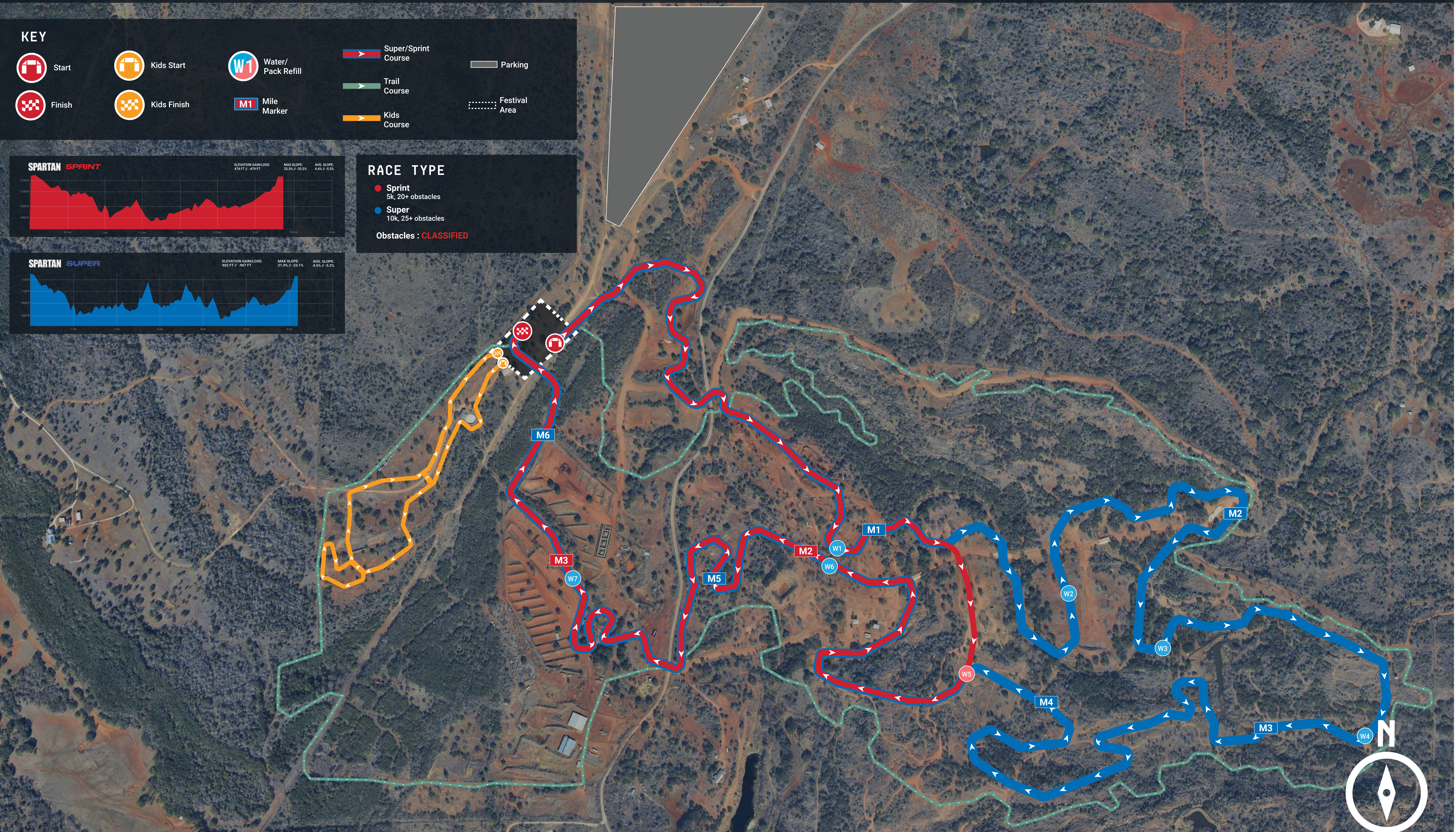
**KEY**

- Start
- Kids Start
- Water/Pack Refill
- Super/Sprint Course
- Parking
- Finish
- Kids Finish
- Mile Marker
- Trail Course
- Kids Course
- Festival Area



**RACE TYPE**

- **Sprint**  
5k, 20+ obstacles
  - **Super**  
10k, 25+ obstacles
- Obstacles : **CLASSIFIED**



Due to the nature of our events this map is subject to change. The number of obstacles will stay consistent with the standards indicated above, but the obstacles themselves will remain classified.

\*Please note obstacles are separated into two categories, Mandatory Obstacles and Pass/Fail Obstacles. Pass/Fail Obstacles consist of single attempt and multiple attempt obstacles. The Rules of Competition can be found on the Spartan website.