

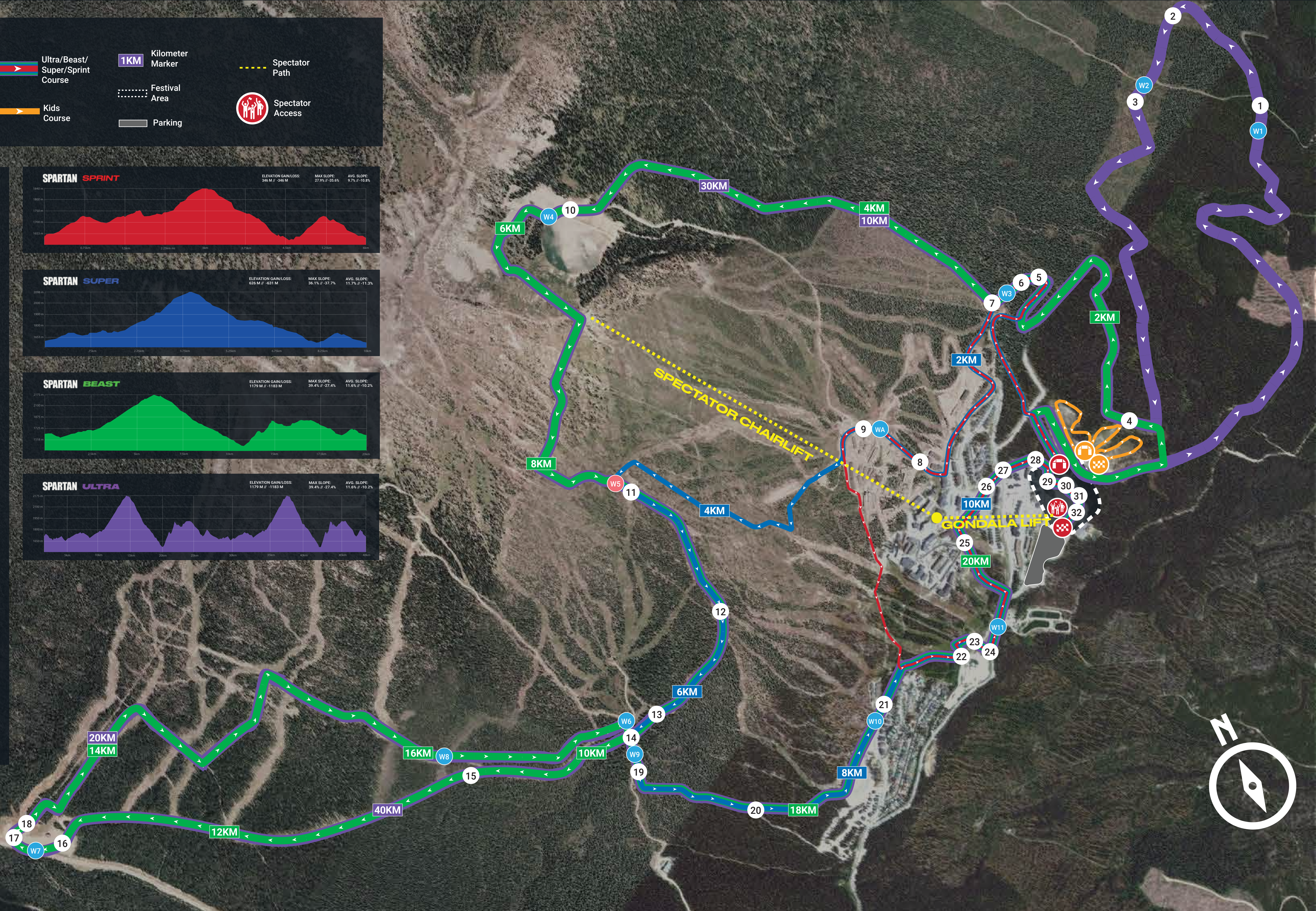
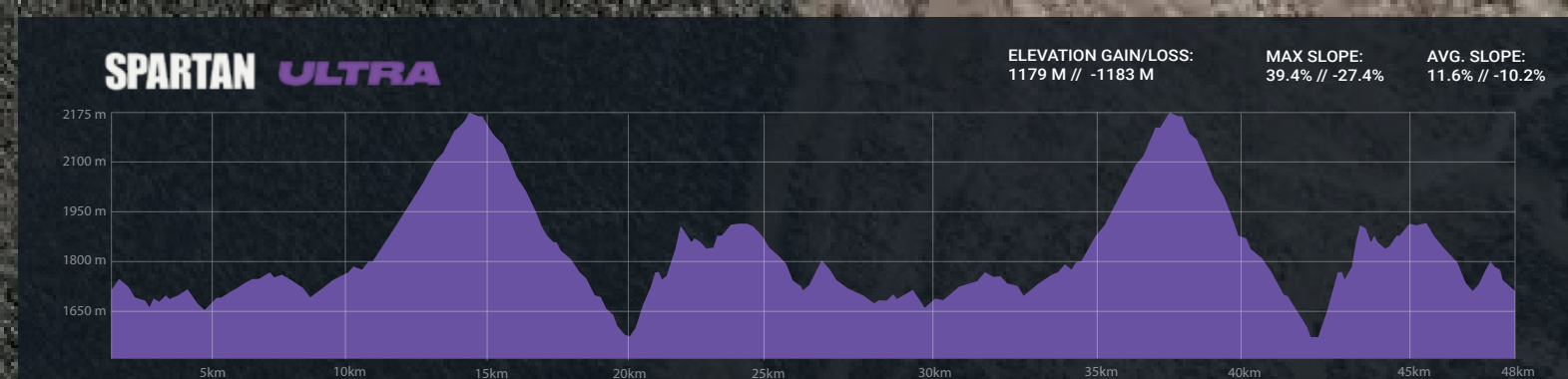
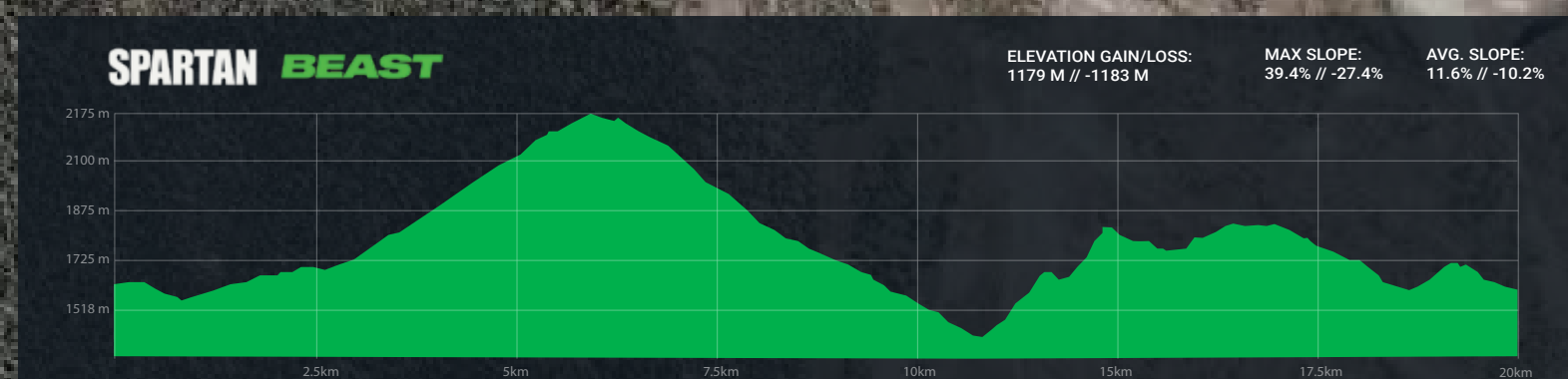
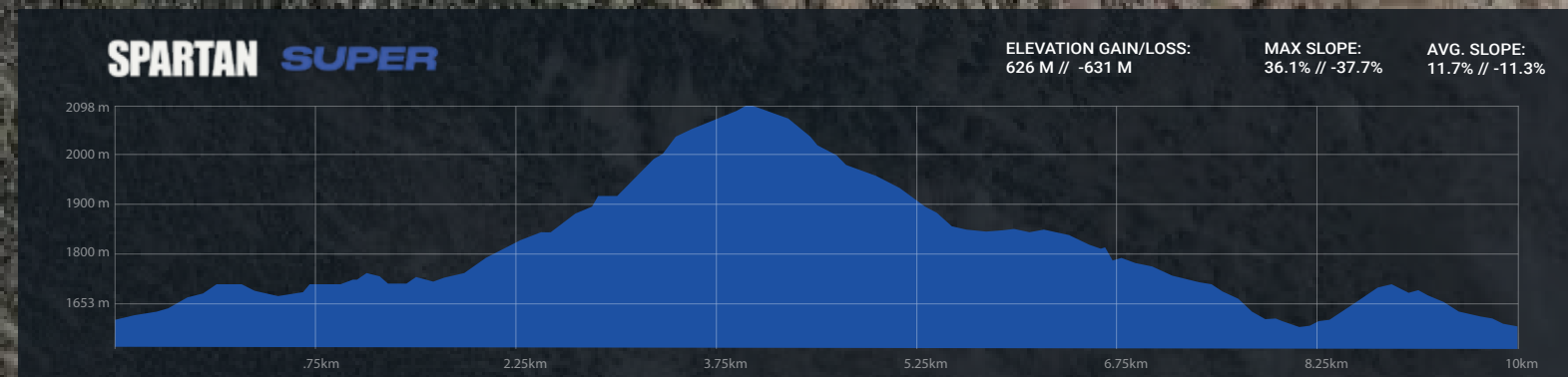
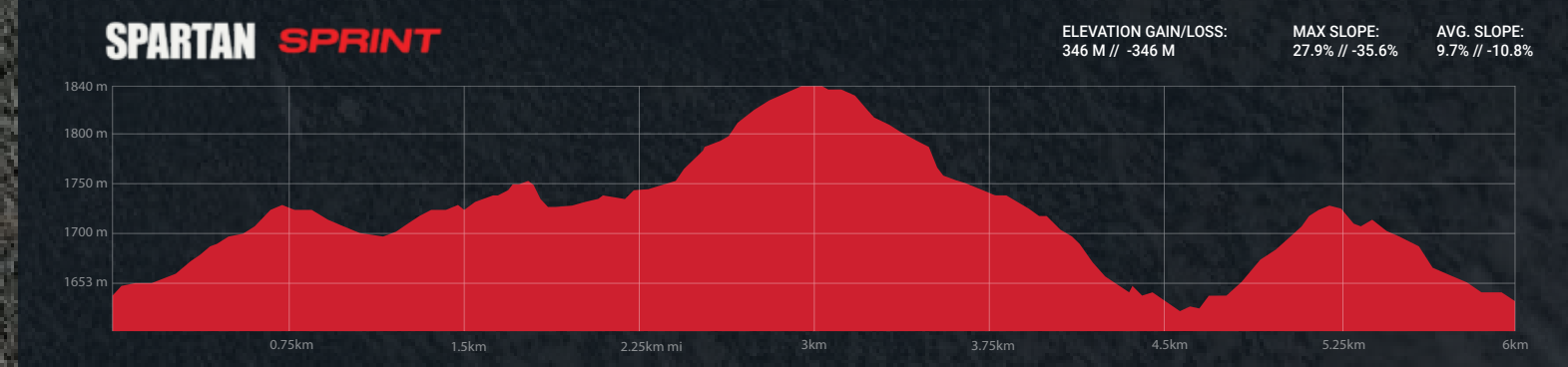


KEY

- Adults/Kids Start
- Water/Pack Refill
- Ultra/Beast/Super/Sprint Course
- 1KM Kilometer Marker
- Spectator Path
- Adults/Kids Finish
- *Obstacle
- Kids Course
- Festival Area
- Spectator Access
- Parking

OBSTACLE GUIDE

- 1 SCRIM NET LOW CRAWL
- 2 FARMERS CARRY
- 3 SANDBAG CARRY
- 4 IRISH TABLES
- 5 OVERWALLS (4' WALLS)
- 6 HERCULES HOIST
- 7 MONKEY BARS
- 8 6' WALL
- 9 BARBED WIRE CRAWL
- 10 8' WALL
- 11 OLYMPUS
- 12 PLATE DRAG
- 13 THE BOX
- 14 STAIRWAY TO SPARTA
- 15 LOG CARRY
- 16 TYROLEAN TRAVERSE
- 17 ARMER
- 18 BARBED WIRE CRAWL #2
- 19 DUNK WALL
- 20 7' WALL
- 21 TWISTER
- 22 SANDBAG CARRY #2
- 23 ATLAS CARRY
- 24 ROPE CLIMB
- 25 Z WALL
- 26 SPEAR THROW
- 27 VERTICAL CARGO
- 28 BUCKET CARRY
- 29 CRAFT A-FRAME CARGO
- 30 INVERTED WALL
- 31 MULTI-RIG
- 32 SLIP WALL



Due to the nature of our events this map is subject to change. Detailed maps can be found on the event webpage or onsite at the information tent where applicable.

*Please note obstacles are separated into two categories, Mandatory Obstacles and Pass/Fail Obstacles. Pass/Fail Obstacles consist of single attempt and multiple attempt obstacles. The penalty for Elite and Age Group racers (red headbands) on ALL pass/fail obstacles is a penalty loop. The penalty for Open heat racers (black headbands) will be EITHER a penalty loop OR 30 burpees; course signage will indicate which penalty to expect. The Rules of Competition can be found on the Spartan website.