

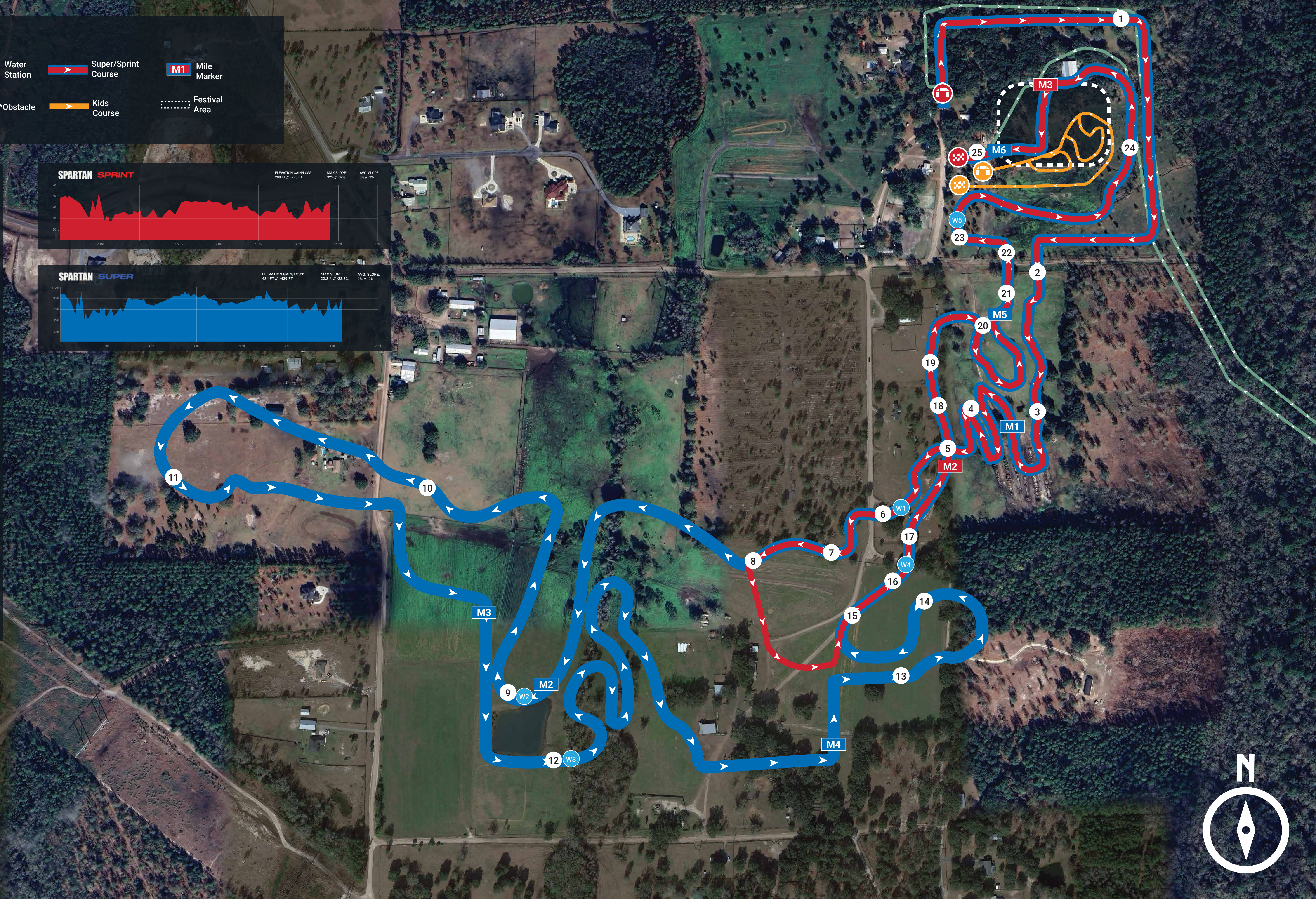
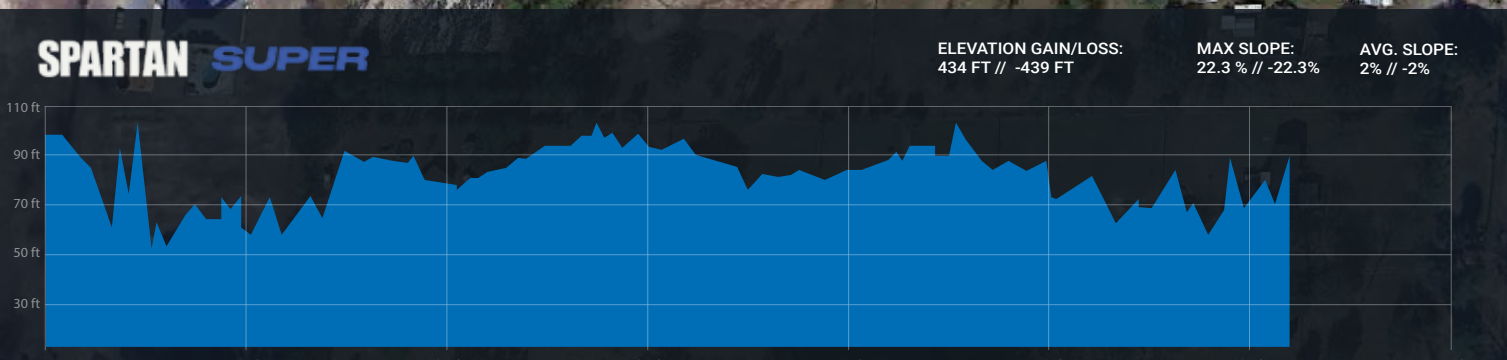
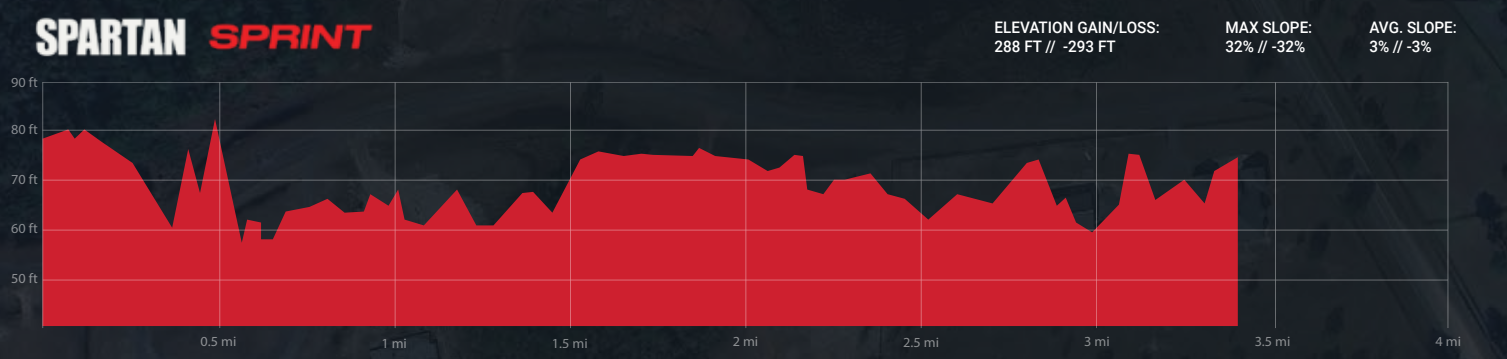


**KEY**

Start   
 Kids Start   
 Water Station   
 Super/Sprint Course   
 Mile Marker  
 Finish   
 Kids Finish   
 \*Obstacle   
 Kids Course   
 Festival Area

**OBSTACLE GUIDE**

- 1 OVER WALLS (4' WALLS)    ● ●
- 2 HURDLES    ● ●
- 3 6' WALL    ● ●
- 4 BUCKET CARRY    ● ●
- 5 CRAFT A-FRAME CARGO    ● ●
- 6 MONKEY BARS    ● ●
- 7 ATLAS CARRY    ● ●
- 8 ROPE CLIMB    ● ●
- 9 7' WALL    ● ●
- 10 STAIRWAY TO SPARTA    ● ●
- 11 BEATER    ● ●
- 12 TWISTER    ● ●
- 13 OLYMPUS    ● ●
- 14 BENDER    ● ●
- 15 HERCULES HOIST    ● ●
- 16 Z WALL    ● ●
- 17 SPEAR THROW    ● ●
- 18 BARBED WIRE CRAWL    ● ●
- 19 INVERTED WALL    ● ●
- 20 SANDBAG CARRY    ● ●
- 21 PLATE DRAG    ● ●
- 22 VERTICAL CARGO    ● ●
- 23 SLIP WALL    ● ●
- 24 TITAN FITNESS MULTI-RIG    ● ●
- 25 FIRE JUMP    ● ●



Due to the nature of our events this map is subject to change. Detailed maps can be found on the event webpage or onsite at the information tent where applicable.

\*Please note obstacles are separated into two categories, Mandatory Obstacles and Pass/Fail Obstacles. Pass/Fail Obstacles consist of single attempt and multiple attempt obstacles. The penalty for Competitive racers (red headbands) on ALL pass/fail obstacles is a penalty loop. The penalty for Open heat racers (black headbands) will be EITHER a penalty loop OR 30 burpees; course signage will indicate which penalty to expect. The Rules of Competition can be found on the Spartan website.