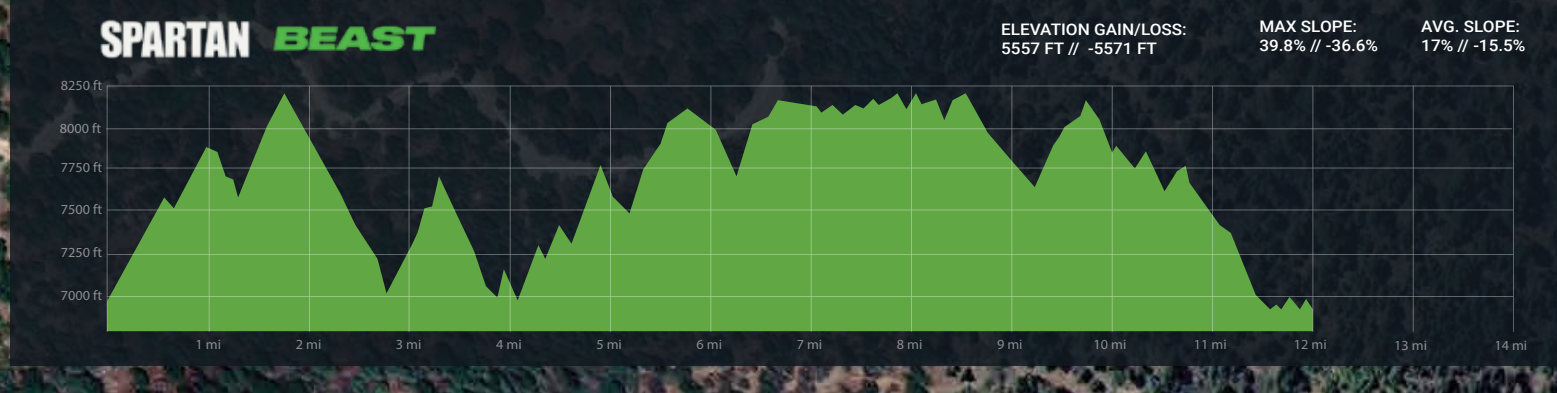
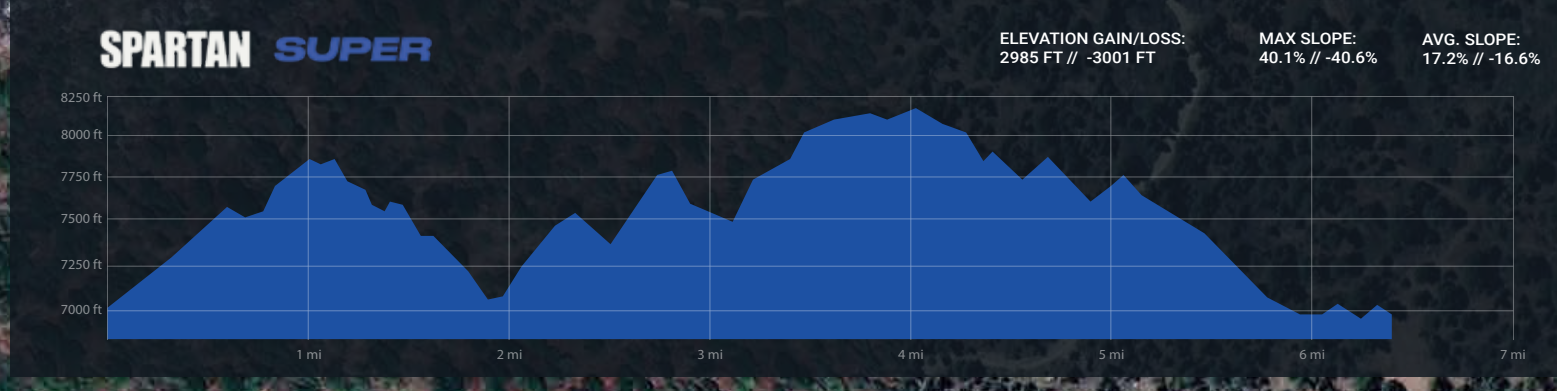
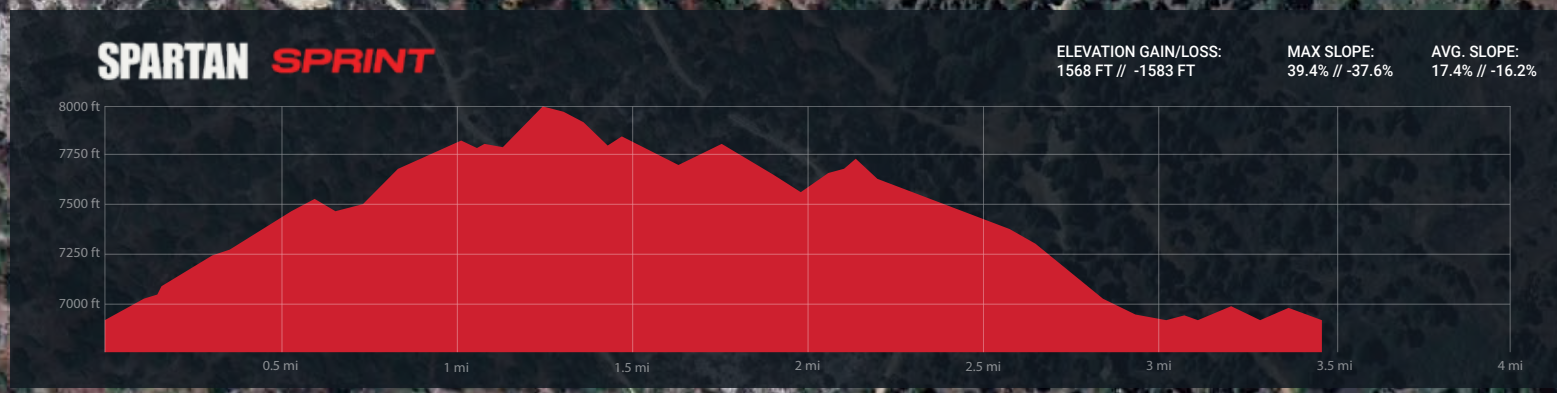




**KEY**

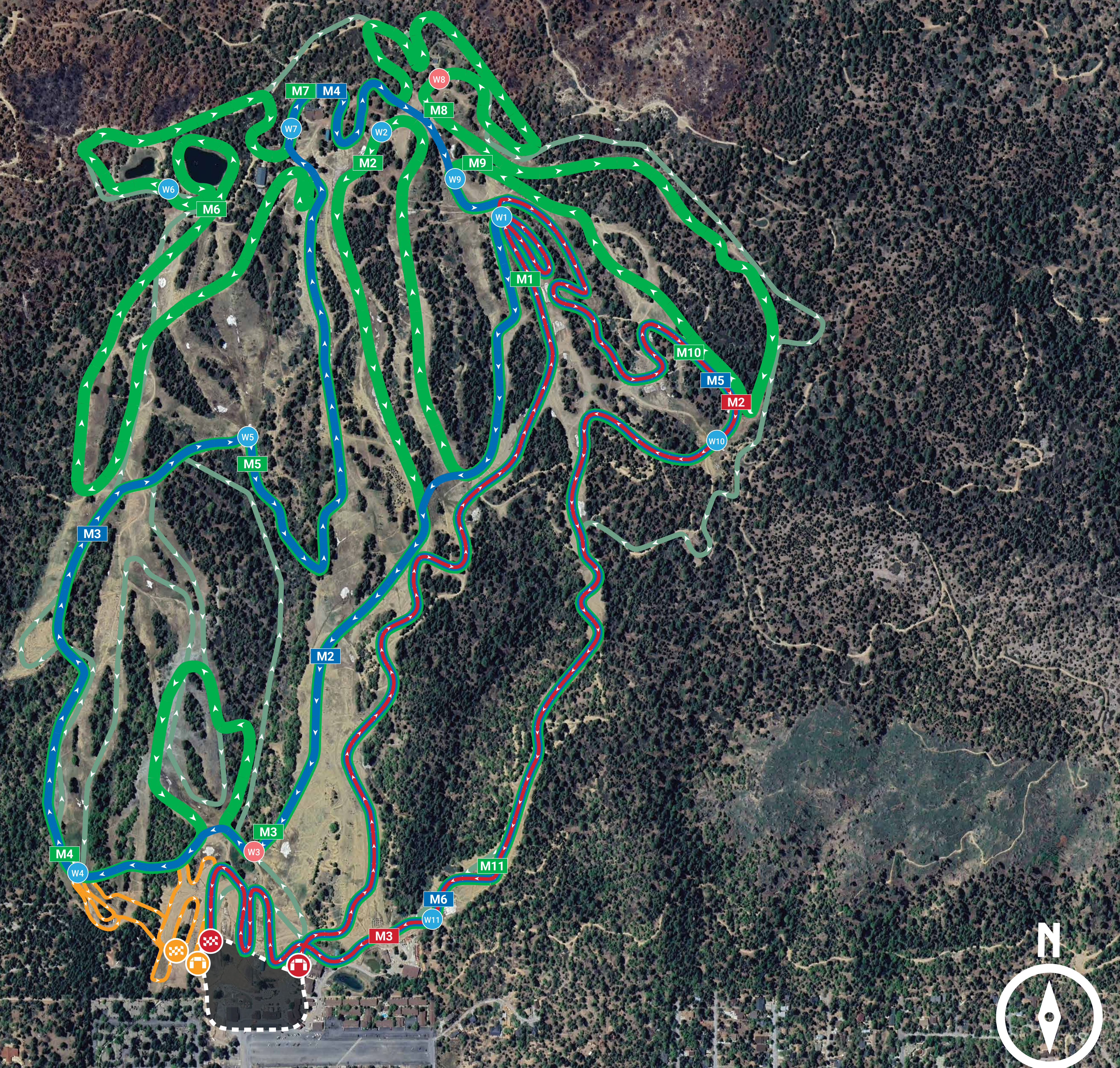
Start	Kids Start	Water/Pack Refill	Beast/Super/Sprint Course	Parking
Finish	Kids Finish	Mile Marker	Kids Course	Festival Area



**RACE TYPE**

- **Sprint**  
5k, 20+ obstacles
- **Super**  
10k, 25+ obstacles
- **Beast**  
21k, 30+ obstacles

Obstacles : **CLASSIFIED**



Due to the nature of our events this map is subject to change. Detailed maps can be found on the event webpage or onsite at the information tent where applicable. The number of obstacles will stay consistent with the standards indicated above, but the obstacles themselves will remain classified. Please note obstacles are separated into two categories, Mandatory Obstacles and Pass/Fail Obstacles. Pass/Fail Obstacles consist of single attempt and multiple attempt obstacles. The Rules of Competition can be found on the Spartan website.