



Trimble Earthworks
grade control platform
for compact machines

Small machine, big potential

Leave a finished grade the first time,
every time.

Ask for the next generation of machine control.
From the company that invented machine control.

The **Trimble® Earthworks grade control platform for compact machines** helps operators of all levels leave a quality surface in their tracks. Our cutting-edge platform features state-of-the-art software and hardware which cuts learning curve, improves operator capabilities and gives you a first-pass finish that's second to none.

Also available as a subscription with flexible terms to modernize your equipment with no large upfront cost.



Intuitive software, rugged hardware

The Trimble Earthworks software runs on the Android™ operating system with either the 10-inch (25.4 cm) Trimble TD540 display or the 7-inch (17.8 cm) Trimble TD510 display. Colorful graphics, natural interactions and gestures and self-discovery features make Trimble Earthworks intuitive and easy to learn.

Each operator can personalize the interface to match their workflow and a variety of configurable views make it easier to see the right perspective for maximum productivity.

Options to get the job done right

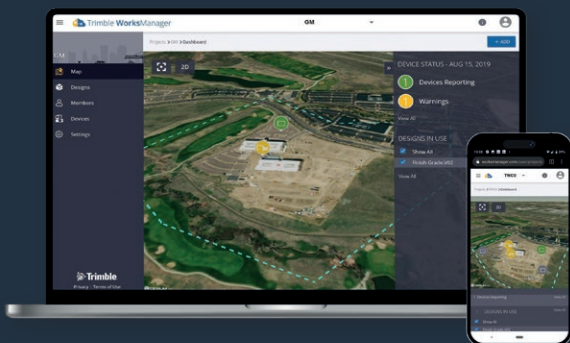
Trimble Earthworks for compact machines gives you a variety of sensor options to meet the needs of your next job.

Offering GNSS based systems, as well as universal total station and laser options, we have what you need whether your goal is flexibility or the ultimate level of precision.

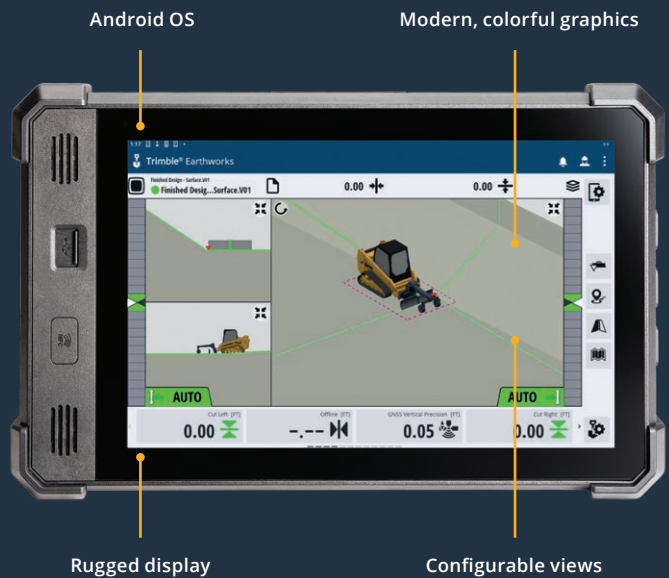
Solutions made for your small machines

Maximize the productivity of your small equipment with solutions designed specifically for small machines. The system provides a wireless connection to the machine display for maximum flexibility and features compact machine-specific interface elements.

Trimble WorksManager software

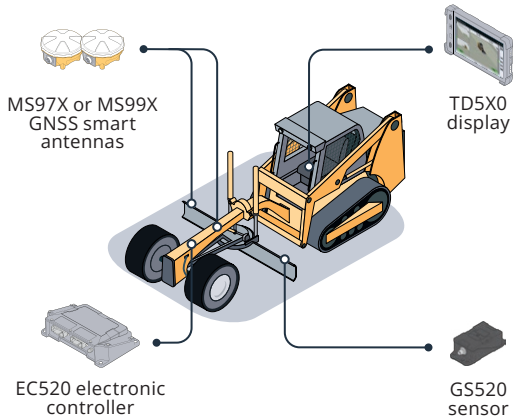


To ensure everyone is operating from the latest design, transfer data files to or from the office wirelessly and automatically using Trimble WorksManager software, a mobile-friendly application that easily manages data and technology assets across project sites.

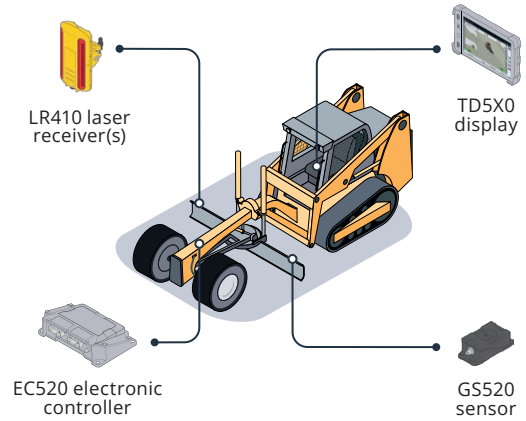


Trimble Earthworks: compact machine configuration options

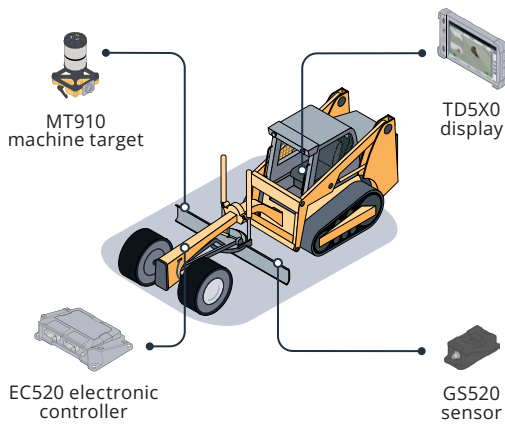
Blade-mounted Dual/Single GNSS system



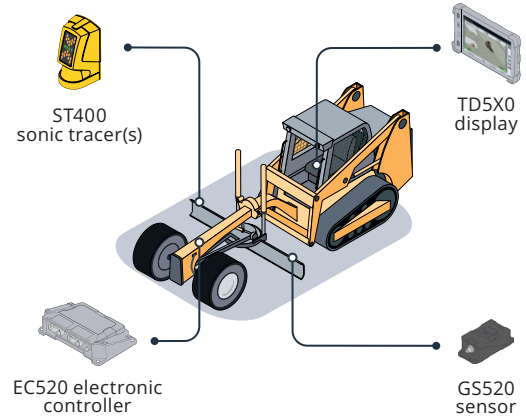
Dual/Single laser system



Universal total station system



Dual/Single sonic system



civilconstruction.trimble.com

Trimble Civil Construction

10368 Westmoor Drive
Westminster, CO 80021
USA

