

# Technology Partner Spotlight

Subsurface uncertainty is one of the leading causes of project delays and budget overruns in construction and engineering.

The integration of 4M Analytics with advanced field and office positioning solutions from Trimble® eliminates this risk right from day one. By streaming instant, AI-driven utility intelligence directly into the Trimble ecosystem, this partnership empowers teams to seamlessly push data to the field for rapid validation and visualize underground infrastructure in augmented reality. The result is a unified, office-to-field workflow that replaces guesswork with absolute clarity, keeping crews safe and projects on schedule.



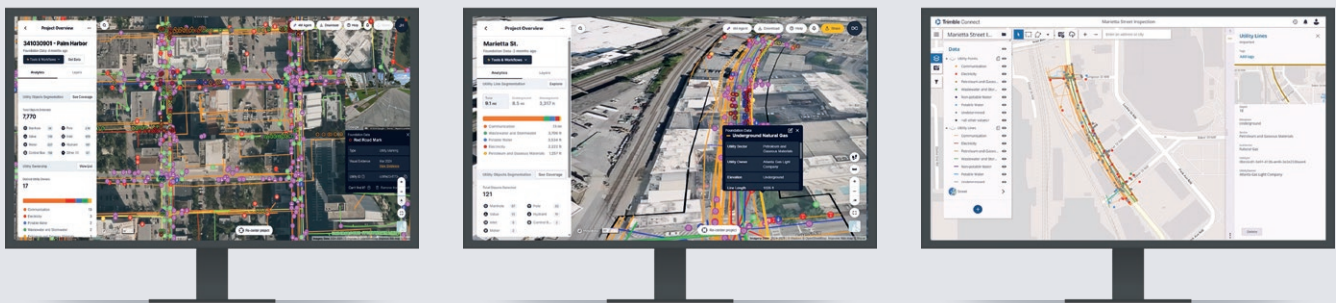


## 4M's Utility Data Platform: The foundation for infrastructure intelligence

### Efficiency impact summary

Project leaders in transportation, engineering, and construction traditionally spend weeks chasing utility records across disconnected systems, sources, and providers—relying on guesswork rather than clarity. 4M eliminates this pain point at the critical beginnings of a project by providing access to reliable utility records faster than any manual records research process could achieve.

By automating this process, 4M significantly cuts back on lost time, ensuring that project intelligence is defined by clarity from day one. This AI-driven resource allows leaders to identify risks earlier, keep crews safer, and deliver projects on time and on budget.



4M delivers a validated, comprehensive picture of the subsurface, empowering stakeholders to eliminate manual research delays and establish a digital source of truth from day one.

### Accelerate project kickoff

Replace weeks of slow, manual records research with instant access to utility data verified by proprietary AI and geospatial experts.

### Identify risks early

Detect potential utility conflicts during the feasibility stage to keep field crews safer and avoid costly mid-project discoveries.

### Trust and validate

Access reliable utility intelligence that can be seamlessly trusted, validated, and shared across teams, technologies, and workflows.

### Operational excellence

Empower leaders to move beyond fragmented data and maintain a single, validated view of the subsurface through every project phase.



## Confident site conditions at every project phase — from feasibility to final construction

### Pre-construction

At project kickoff, 4M utility data integrates directly into Trimble Connect®, a cloud collaboration platform, allowing stakeholders to visualize subsurface conditions and identify conflicts early. Teams can then coordinate with field crews to target investigation efforts and validate ground conditions using the Trimble SiteVision® augmented reality system and Trimble TerraFlex™ field data capture software. Because updates are instantly available to all stakeholders, this proactive approach eliminates the traditional wait for owner records and reduces the need for early, extensive SUE mobilization.



### During construction

As site conditions evolve, field crews can pull 4M data into TerraFlex to capture, verify and update on-site conditions through targeted data collection. By maintaining this single source of truth, the entire team stays aligned. Simultaneously, SiteVision provides real-time visualization of the most current utility records, allowing crews to monitor conditions throughout the build—significantly reducing the risk of utility strikes and improving site safety.



### Post construction

(coming soon with bi-directional sync)

## Integration narrative and supported Trimble hardware/software

4M delivers precise utility records by project boundary directly into Trimble Connect via a dedicated extension and the 4M WFS API. From this foundational cloud platform, project teams can easily push data to Trimble TerraFlex for targeted field data collection, validation and real-time form updates. Concurrently, crews can overlay these digital utility records in augmented reality using Trimble SiteVision. By establishing this direct pipeline, the integration ensures that every discipline—from design to the field—works from a unified, real-time picture of the subsurface throughout the entire project lifecycle.

### Supported Trimble products:

Trimble Connect, Trimble TerraFlex (Premium Edition), Trimble SiteVision.

# Ready to bring high-accuracy positioning into everyday field workflows?

**SIGN UP FOR EARLY ACCESS**

## **About Trimble**

Trimble is a global technology company that connects the physical and digital worlds, transforming the ways work gets done. With relentless innovation in precise positioning, modeling and data analytics, Trimble enables essential industries including construction, geospatial and transportation. Whether it's helping customers build and maintain infrastructure, design and construct buildings, optimize global supply chains or map the world, Trimble is at the forefront, driving productivity and progress.

For more information about Trimble, visit: [www.trimble.com](http://www.trimble.com).

## **About 4M Analytics**

4M is the utility data platform for infrastructure intelligence. Powered by proprietary data and AI, verified by geospatial experts, 4M delivers instant, reliable utility intelligence you can trust, validate, and access across teams, technologies, and workflows. Leaders in transportation, utilities, engineering, and construction rely on 4M to identify risks earlier, keep crews safer, and deliver projects on time and on budget.

For more information about 4M, visit: [www.4Manalytics.com](http://www.4Manalytics.com)