



# Trimble Roadworks paving control platform for asphalt pavers

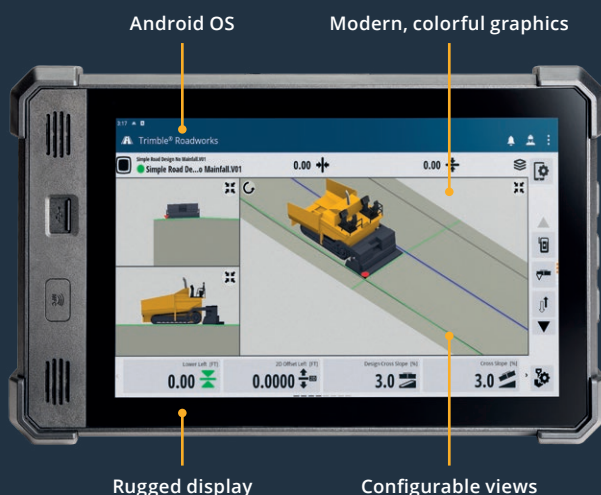


# Pave the way with Trimble — the pioneer of machine control

The Trimble® Roadworks paving control platform for asphalt pavers empowers operators of all levels to work faster and more productively than ever before. This intuitive non-contact solution provides superior mat control, ensuring precise thickness and elevation specifications are met while delivering a smoother surface with less material.

## Automated steering and mat management

Effortlessly achieve accurate horizontal and vertical placement by automatically controlling steering and screed width according to design on properly equipped Dynapac™ and Vogele® asphalt pavers. Pave faster and achieve a higher-quality surface while significantly reducing operator fatigue.

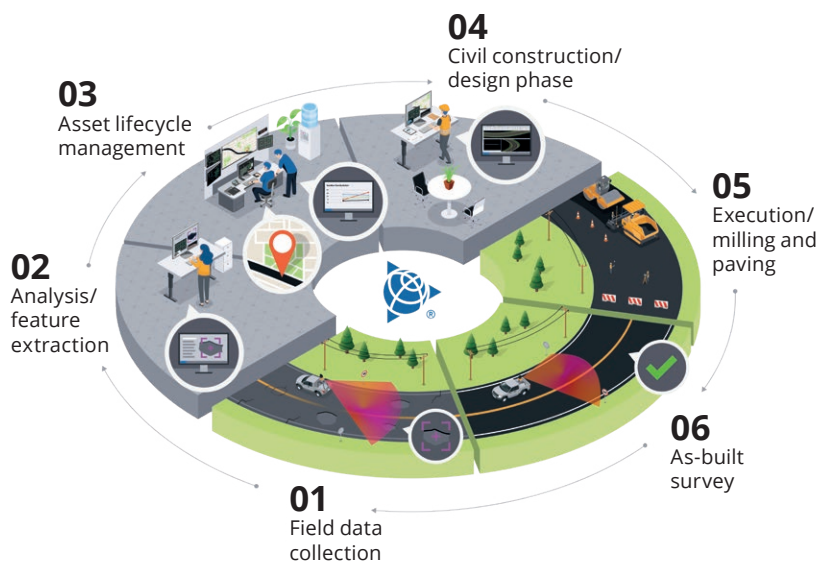


## Intuitive software, rugged hardware

The Android™-based Roadworks app runs on the 10-inch (25.4 cm) Trimble TD540 display for 3D applications, with tactile keypads for 2D applications. Its intuitive design, colorful graphics and easy-to-understand layout simplify the control of cross-slope and material thickness. Configurable views enable a single operator to monitor both the left and right sides of the screed, maximizing productivity.

## Productive and precise paving

- Achieve smooth, accurate finished surfaces
- Reduce material use by paving to the minimal asphalt thickness specification
- Simultaneously monitor cross-slope and mat thickness values
- Easily swap sensors based on application — from cross-slope to joint matching
- Rugged and durable components designed for harsh construction conditions
- Lower labor costs with single-operator screed control
- Improve efficiency by avoiding the need to lift averaging beams over obstacles
- Easily adjust sensor values in the field
- Streamline 3D applications by eliminating complications from stringlines, including human error and setup costs



## End-to-end paving workflow

With the Trimble paving solution, you get a complete roadbuilding workflow from scan to finished surface. Capture site conditions with mobile mapping, design in Trimble Business Center software and sync updates directly to the field via Trimble WorksManager software and Trimble Connect® cloud software. Trimble Roadworks then executes paving, milling, and compaction with precision — helping crews work faster, reduce rework and deliver consistent results.

# Trimble Roadworks: asphalt paver configurations

## 2D system

SD510 switch



VM510 valve module



EC520 electronic controller



TD5X0 display(s)



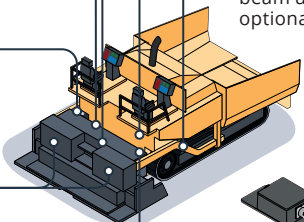
AA510 alarm



ST220 sonic tracer  
(sonic averaging beam upgrade optional)

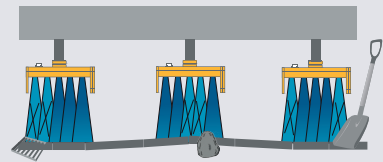


AS200 angle sensor



## 2D slope and surface references

A cost-effective solution for roads previously graded or milled with Trimble 3D paving control systems, the 2D system references surfaces, cross-slopes or stringlines with high precision. Use the Trimble AS200 angle sensor to reference the desired cross-slope, which rarely needs calibration. For superior joint matching, optional ST220 sonic tracers provide contact-free accuracy, averaging out surface imperfections like stones or grates to produce a smoother, more accurate mat.



## 3D system

Install the Trimble Roadworks 3D system over many different paver 2D systems.

SNM941 Connected Site® gateway (optional)



SNRX3X on-machine radio



EC520 electronic controller



Single / dual MT9X0 machine target with mast\*



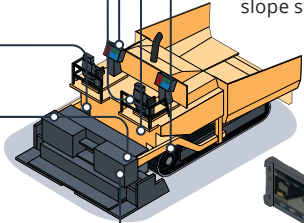
AA510 alarm



AS450 slope sensor



TD5X0 display



\*Dual not available on all asphalt paver configurations.

[civilconstruction.trimble.com](http://civilconstruction.trimble.com)

**Trimble Civil Construction**

10368 Westmoor Drive  
Westminster, CO 80021  
USA

