



Trimble Roadworks paving control platform for asphalt compactors



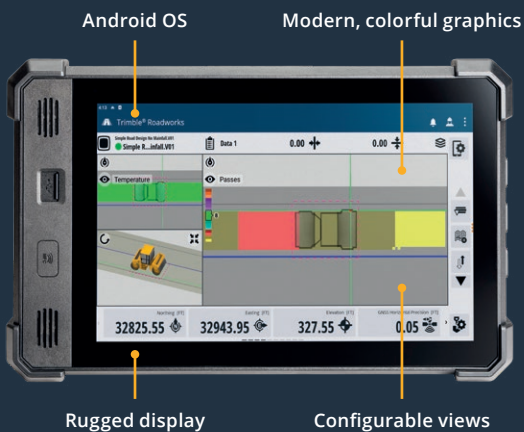
Control your compaction

Get rolling with Trimble — the pioneer of machine control

The Trimble® Roadworks paving control platform for asphalt compactors helps operators of all levels improve the speed, accuracy and ease of asphalt compaction.

Whether you are a small local paver or a large-scale operation, Roadworks brings top-tier precision to projects of any scope.

Ideal for asphalt and hot-mix asphalt compaction applications, Roadworks supports target density, pass count and asphalt temperature control for highways, railway construction, residential pads, commercial site construction, parking lots and sports fields.



Intuitive software, rugged hardware

The Android™-based Roadworks app features familiar, smartphone-like gestures in the cab, making the system easy to learn and personalize. It operates on the rugged 10-inch (25.4 cm) Trimble TD540 touchscreen display, boasting colorful, high-resolution graphics and configurable views to fit any operator's workflow.

Intelligent compaction

Achieve increased road durability, stability and load-bearing capacity by consistently compacting to design. Roadworks removes guesswork, helping to prevent mistakes and over-compaction that can lead to surface failure.

- Monitor temperature mapping, pass counts, site volumes and compaction measurement values (CMV) to hit targets and flag areas needing correction
- Improve cost efficiency by reducing passes, fuel use, machine wear and labor hours
- Consistently meet Department of Transportation (DOT) and private job specifications



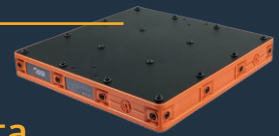
Actionable data

Turn site activity into business intelligence. Supervisors and quality managers can monitor compaction progress to identify and correct issues before they result in costly rework.

- Generate verified reports proving compliance with owner specifications
- Track daily progress against total work for better oversight
- Import field data into Veta to boost competitiveness during bidding
- Meet density specs to avoid penalties and satisfy owner requirements

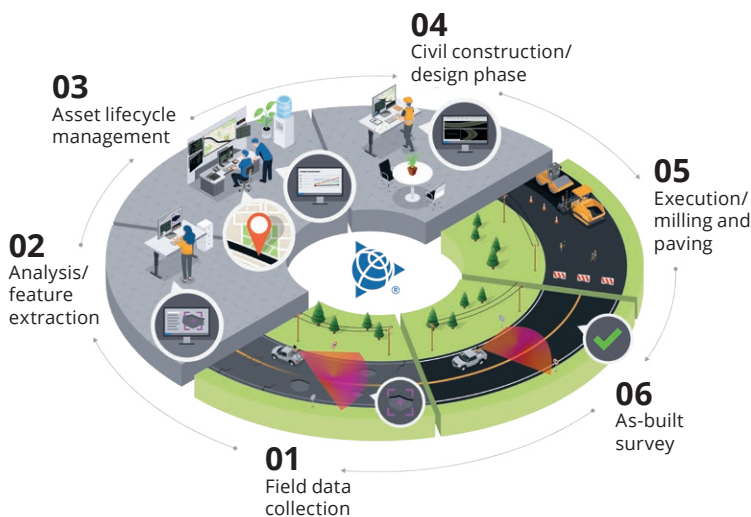


Real-time density data



Transform your QA/QC process with the ground-penetrating radar (GPR) PaveScan® RS sensor from GSSI. Integrated with Roadworks to map air-void metrics, it enables operators to verify density on every pass while the asphalt is still workable, reducing reliance on destructive core sampling.

- Remove inspectors from the road and live traffic and eliminate radiation risks and nuclear gauge permitting
- Ensure the entire road meets specifications, not just spot checks

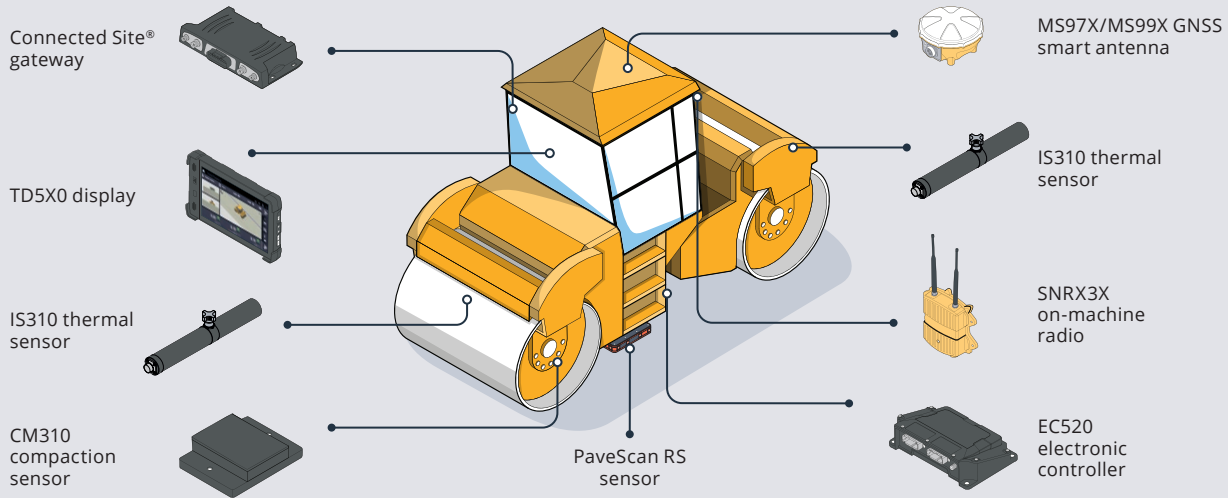


End-to-end paving workflow

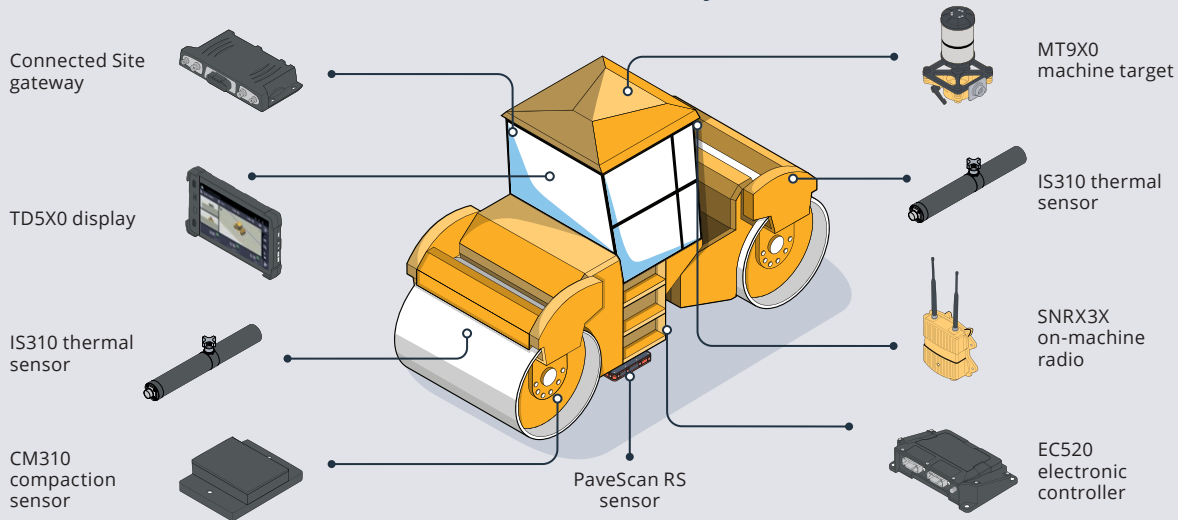
With the Trimble paving solution, you get a complete roadbuilding workflow from scan to finished surface. Capture site conditions with mobile mapping, design in Trimble Business Center software and sync updates directly to the field via Trimble WorksManager software and Trimble Connect® cloud software. Trimble Roadworks then executes paving, milling and compaction with precision — helping crews work faster, reduce rework and deliver consistent results.

Trimble Roadworks: paving control configurations

Single GNSS systems



Universal total station system



civilconstruction.trimble.com

Trimble Civil Construction

10368 Westmoor Drive
Westminster, CO 80021
USA

