

Quality ID #485: Psoriasis – Improvement in Patient-Reported Itch Severity

2024 COLLECTION TYPE: **MIPS CLINICAL QUALITY MEASURES (CQMS)**

MEASURE TYPE:
Patient-reported Outcome-based Performance Measure – High Priority

DESCRIPTION:
The percentage of patients aged 8 years and older, with a diagnosis of psoriasis where at an initial (index) visit have a patient-reported itch severity assessment performed, score greater than or equal to 4, and who achieve a score reduction of 3 or more points at a follow-up visit.

INSTRUCTIONS:
This outcome measure is to be submitted at **each denominator eligible visit** for patients with a diagnosis of psoriasis seen during the performance period. This measure may be submitted by Merit-based Incentive Payment System (MIPS) eligible clinicians who perform the quality actions described in the measure based on the services provided and the measure-specific denominator coding.

NOTE: Patient encounters for this measure conducted via telehealth (including but not limited to encounters coded with GQ, GT, 95, or POS 02, POS 10) are allowable.

Measure Submission Type:
Measure data may be submitted by individual MIPS eligible clinicians, groups, or third-party intermediaries. The listed denominator criteria are used to identify the intended patient population. The numerator options included in this specification are used to submit the quality actions as allowed by the measure. The quality data codes listed do not need to be submitted by MIPS eligible clinicians, groups, or third-party intermediaries that utilize this modality for submissions; however, these codes may be submitted for those third-party intermediaries that utilize Medicare Part B claims data. For more information regarding Application Programming Interface (API), please refer to the Quality Payment Program (QPP) website.

DENOMINATOR:
All patients aged 8 years and older, with a diagnosis of psoriasis with an initial (index visit) Numeric Rating Scale (NRS), Visual Rating Scale (VRS), or ItchyQuant assessment score of greater than or equal to 4 who are returning for a follow-up visit

Definitions:
Numeric Rating Scale (NRS) for Pruritis – The “NRS” is comprised of one item and represents the numbers 0 (“no itch”) to 10 (“worst imaginable itch”). Patients are asked to rate the intensity of their itch over the last 24 hours.
Visual Rating Scale (VRS) for Pruritis – The “VRS” is comprised of one item and represents the numbers 0 (“no itch”) to 10 (“worst imaginable itch”). Patients are asked to rate the intensity of their itch over the last 24 hours. Note: This scale is intended for patients 18 years and older.
ItchyQuant – An illustrated numeric rating scale for itch severity and represent the numbers 0 (“no itch”) to 10 (“worst itch imaginable”). Patients are asked to rate itch severity over the past 7 days.

DENOMINATOR NOTE: The initial (index) assessment and the follow-up encounter for assessment must occur during the measurement period.

*Signifies that this CPT Category I code is a non-covered service under the Medicare Part B Physician Fee Schedule (PFS). These non-covered services should be counted in the denominator population for MIPS CQMs.

Denominator Criteria (Eligible Cases):

Patients aged ≥ 8 years on the date of the encounter

AND

Diagnosis of psoriasis (ICD-10-CM): L40.0, L40.1, L40.2, L40.3, L40.4, L40.8, L40.9

AND

At least two patient encounters during the performance period (CPT): 99202, 99203, 99204, 99205, 99211, 99212, 99213, 99214, 99215, 99242*, 99243*, 99244*, 99245*, 99441, 99442, 99443

AND

Initial (index visit) Numeric Rating Scale (NRS), Visual Rating Scale (VRS), or ItchyQuant assessment score of greater than or equal to 4: M1196

NUMERATOR:

Patients who achieve an assessment score that is reduced by 3 or more points (minimal clinically important difference) from the initial (index) assessment score

Numerator Instructions:

To successfully report this measure, the physician(s) and/or provider(s) of the same clinical practice must use the same assessment tool for both the initial (index) AND follow-up assessment using one of the validated tools (NRS, VRS, or ItchyQuant). If a patient has multiple follow-up visits within the measurement period, the last (most recent) visit should be used. Eligible providers who develop the care plan for the patient at the initial (index) visit will be eligible to report this measure.

To satisfy this measure, a patient must achieve any of the following score reductions:

Table 1: Initial Assessment Score Difference

Initial (Index Visit) Assessment Score	Minimal Clinically Important Difference (3pts)
10	7 or lower
9	6 or lower
8	5 or lower
7	4 or lower
6	3 or lower
5	2 or lower
4	1 or lower

Numerator Options:

Performance Met:

Itch severity assessment score is reduced by 3 or more points from the initial (index) assessment score to the follow-up visit score (**M1197**)

OR

Performance Not Met:

Itch severity assessment score was not reduced by at least 3 points from initial (index) score to the follow-up visit score or assessment was not completed during the follow-up encounter (**M1198**)

RATIONALE:

Psoriasis is a chronic inflammatory disease in which pruritus is a frequent symptom. Approximately 7.4 million people in the United States have psoriasis. Direct costs of the disease are estimated between \$51.7 and \$63.2 billion, with the total economic burden estimated to be between \$112 and \$135 billion (Brezinski, 2015).

Chronic inflammatory skin diseases, such as psoriasis, are pruritic and tremendously burdensome; with more than 70 percent of psoriasis patients suffering from itch (Reich,2016). Itch has profound effects on patients, especially in geriatric populations, where there is increased incidence of pruritus (Yalçin, 2006; Cohen, 2012). For those over 65 years old, itch is the most common skin complaint (Berger, 2011). The number of patients with pruritus is expected to increase as the elderly population grows – becoming 25 percent of the US population by 2025 (Grozdev, 2011).

Pruritus is a frequent and onerous symptom of psoriasis and, on its own, has significant effects on patients' quality of life. In a study, investigators quantified pruritic burden in a cross-sectional analysis investigating chronic pruritus and pain. They demonstrated that the quality of life impact was due to the severity of the symptom, rather than whether the symptom was pain or pruritus. Moreover, they elucidated a mean health utility score of 0.87 from chronic pruritus (CP) patients, meaning that on average, a patient would give up 13 percent of their life expectancy to live without pruritus (Kini, 2011).

CLINICAL RECOMMENDATION STATEMENTS:

Evidence-based guideline: Joint AAD - NPF Guidelines of care for the management and treatment of psoriasis with topical therapy and alternative medicine modalities for psoriasis severity measures.

Recommendation: Pruritus is a significant symptom of psoriasis. An itch severity assessment is recommended to appropriately assess the degree of pruritus when present.

This measure enhances compliance of the guideline by routinely assessing pruritus in psoriasis patients. For patients with moderate and severe pruritus symptoms, the measure looks to reduce pruritus burden by a minimal clinically important difference (3 or more points).

Evidence-based literature: The experience of itch in children with psoriasis: A qualitative exploration of the Itch Numeric Rating Scale (Mannix, 2021) and Tools to study the severity of itch in 8- to 17-year-old children: Validation of TweenItchyQoL and ItchyQuant (Kong, 2021).

Both the NRS and ItchyQuant are validated severity tools for pediatric patients aged 8 and older. This measure assesses pruritus in both pediatric and adult populations.

COPYRIGHT:

The measure is not a clinical guideline, does not establish a standard of medical care, and has not been tested for all potential applications.

The measure, while copyrighted, can be reproduced and distributed, without modification, for noncommercial purposes, e.g., use by health care providers in connection with their practices. Commercial use is defined as the sale, license, or distribution of the measure for commercial gain, or incorporation of the measure into a product or service that is sold, licensed or distributed for commercial gain.

THE MEASURE AND SPECIFICATIONS ARE PROVIDED "AS IS" WITHOUT WARRANTY OF ANY KIND.

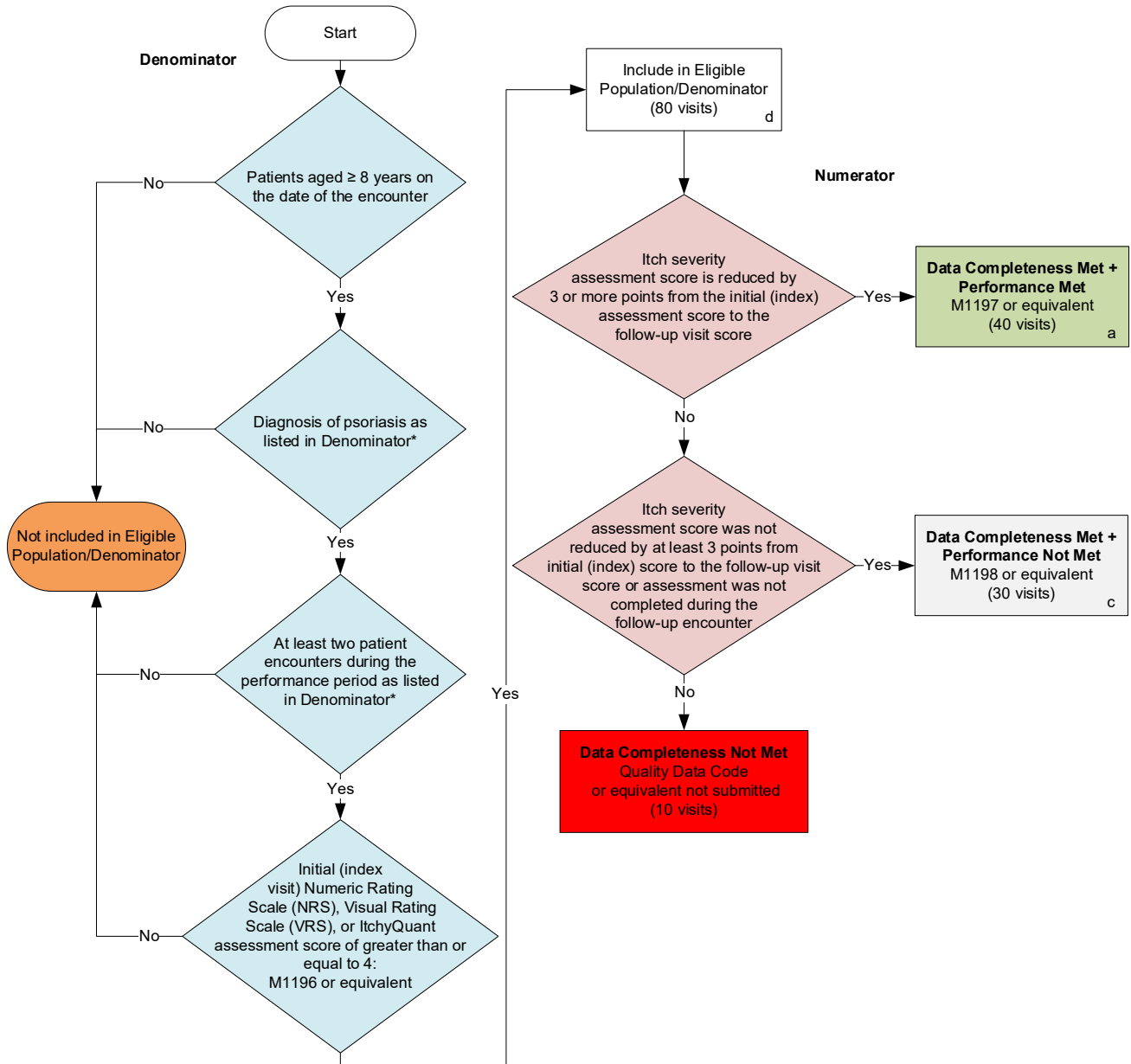
© 2023 American Academy of Dermatology/Association. All rights reserved. Applicable FARS/DFARS Restrictions Apply to Government Use.

Limited proprietary coding is contained in the Measure specifications for convenience. Users of the proprietary code sets should obtain all necessary licenses from the owners of these code sets. The AAD and its members disclaim all liability for use or accuracy of any Current Procedural Terminology (CPT®) or other coding contained in the specifications.

CPT® contained in the Measures specifications is copyright 2004-2023 American Medical Association. LOINC® copyright 2004-2023 Regenstrief Institute, Inc. SNOMED CLINICAL TERMS (SNOMED CT®) copyright 2004-2023 International Health Terminology Standards Development Organisation. ICD-10 is copyright 2023 World Health Organization. All Rights Reserved.

2024 Clinical Quality Measure Flow for Quality ID #485: Psoriasis – Improvement in Patient-Reported Itch Severity

Disclaimer: Refer to the measure specification for specific coding and instructions to submit this measure.



SAMPLE CALCULATIONS	
Data Completeness=	
Performance Met (a=40 visits) + Performance Not Met (c=30 visits)	$= \frac{70 \text{ visits}}{80 \text{ visits}} = 87.50\%$
Eligible Population / Denominator (d=80 visits)	$= 80 \text{ visits}$
Performance Rate=	
Performance Met (a=40 visits)	$= \frac{40 \text{ visits}}{70 \text{ visits}} = 57.14\%$
Data Completeness Numerator (70 visits)	$= 70 \text{ visits}$

*See the posted measure specification for specific coding and instructions to submit this measure.

NOTE: Submission Frequency: Visit

CPT only copyright 2023 American Medical Association. All rights reserved.
The measure diagrams were developed by CMS as a supplemental resource to be used in conjunction with the measure specifications. They should not be used alone or as a substitution for the measure specification. v8

**2024 Clinical Quality Measure Flow Narrative for Quality ID #485:
Psoriasis – Improvement in Patient-Reported Itch Severity**

Disclaimer: Refer to the measure specification for specific coding and instructions to submit this measure.

1. Start with Denominator
2. Check *Patients aged 8 years and older on the date of the encounter*.
 - a. If *Patients aged 8 years and older on the date of the encounter* equals No, do not include in *Eligible Population/Denominator*. Stop processing.
 - b. If *Patients aged 8 years and older on the date of the encounter* equals Yes, proceed to check *Diagnosis of psoriasis as listed in Denominator**.
3. Check *Diagnosis of psoriasis as listed in Denominator**.
 - a. If *Diagnosis of psoriasis as listed in Denominator** equals No, do not include in *Eligible Population/Denominator*. Stop processing.
 - b. If *Diagnosis of psoriasis as listed in Denominator** equals Yes, proceed to check *At least two patient encounters during the performance period as listed in Denominator**.
4. Check *At least two patient encounters during the performance period as listed in Denominator**.
 - a. If *At least two patient encounters during the performance period as listed in Denominator** equals No, do not include in *Eligible Population/Denominator*. Stop processing.
 - b. If *At least two patient encounters during the performance period as listed in Denominator** equals Yes, proceed to check *Initial (index visit) Numeric Rating Scale (NRS), Visual Rating Scale (VRS), or ItchyQuant assessment score of greater than or equal to 4*.
5. Check *Initial (index visit) Numeric Rating Scale (NRS), Visual Rating Scale (VRS), or ItchyQuant assessment score of greater than or equal to 4*:
 - a. If *Initial (index visit) Numeric Rating Scale (NRS), Visual Rating Scale (VRS), or ItchyQuant assessment score of greater than or equal to 4* equals No, do not include in *Eligible Population/Denominator*. Stop processing.
 - b. If *Initial (index visit) Numeric Rating Scale (NRS), Visual Rating Scale (VRS), or ItchyQuant assessment score of greater than or equal to 4* equals Yes, include in *Eligible Population/Denominator*.
6. Denominator Population:
 - Denominator Population is all Eligible Patients in the Denominator. Denominator is represented as Denominator in the Sample Calculation listed at the end of this document. Letter d equals 80 visits in the Sample Calculation.
7. Start Numerator

8. Check *Itch severity assessment score is reduced by 3 or more points from the initial (index) assessment score to the follow-up visit score*:
 - a. If *Itch severity assessment score is reduced by 3 or more points from the initial (index) assessment score to the follow-up visit score* equals Yes, include in *Data Completeness Met and Performance Met*.
 - *Data Completeness Met and Performance Met* letter is represented as Data Completeness and Performance Rate in the Sample Calculation listed at the end of this document. Letter a equals 40 visits in the Sample Calculation.
 - b. If *Itch severity assessment score is reduced by 3 or more points from the initial (index) assessment score to the follow-up visit score* equals No, proceed to check *Itch severity assessment score was not reduced by at least 3 points from initial (index) score to the follow-up visit score or assessment was not completed during the follow-up encounter*.
9. Check *Itch severity assessment score was not reduced by at least 3 points from initial (index) score to the follow-up visit score or assessment was not completed during the follow-up encounter*:
 - a. If *Itch severity assessment score was not reduced by at least 3 points from initial (index) score to the follow-up visit score or assessment was not completed during the follow-up encounter* equals Yes, include in the *Data Completeness Met and Performance Not Met*.
 - *Data Completeness Met and Performance Not Met* letter is represented as Data Completeness in the Sample Calculation listed at the end of this document. Letter c equals 30 visits in the Sample Calculation.
 - b. If *Itch severity assessment score was not reduced by at least 3 points from initial (index) score to the follow-up visit score or assessment was not completed during the follow-up encounter* equals No, proceed to check *Data Completeness Not Met*.
10. Check *Data Completeness Not Met*:
 - If *Data Completeness Not Met*, the Quality Data Code or equivalent was not submitted. 10 visits have been subtracted from the Data Completeness Numerator in the Sample Calculation.

Sample Calculations:

Data Completeness equals Performance Met (a equals 40 visits) plus Performance Not Met (c equals 30 visits) divided by Eligible Population / Denominator (d equals 80 visits). All equals 70 visits divided by 80 visits. All equals 87.50 percent.

Performance Rate equals Performance Met (a equals 40 visits) divided by Data Completeness Numerator (70 visits). All equals 40 visits divided by 70 visits. All equals 57.14 percent.

*See the posted measure specification for specific coding and instructions to submit this measure.

NOTE: Submission Frequency: Visit

The measure diagrams were developed by CMS as a supplemental resource to be used in conjunction with the measure specifications. They should not be used alone or as a substitution for the measure specification.