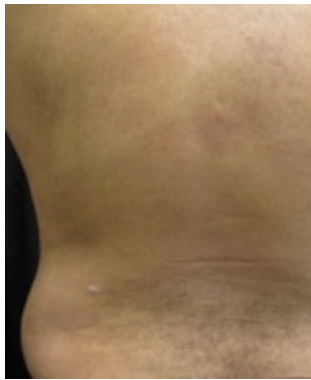


# PGA

Physician Global Assessment (6-point)

# What is the PGA?

The PGA, or Physician Global Assessment, is scoring system used to rate severity of psoriasis.



**0**

clear



**1**

almost clear



**2**

mild



**3**

moderate



**4**

severe



**5**

very  
severe

# Physician Global Assessment

E

Erythema

averaged over  
all lesions (0-5)

0=no erythema  
1=faint erythema  
2=light red coloration  
3=moderate red coloration  
4=bright red coloration  
5=dusky-deep red coloration

I

Induration

averaged over  
all lesions (0-5)

0=no plaque elevation  
1=minimal (~0.25 mm)  
2=mild (~0.50 mm)  
3=moderate (~0.75 mm)  
4=marked (~1.0 mm)  
5=severe (≥1.25 mm)

S

Scale

averaged over  
all lesions (0-5)

0=no evidence of scale  
1=minimal (occasional fine scale over <5% of lesion)  
2=mild, fine scale predominates  
3=moderate, coarse scale predominates  
4=marked; thick, non-tenacious scale predominates  
5=severe; very thick tenacious scale predominates

PGA=  $\frac{E + I + S}{3}$  rounded to whole number 0-5

In order to perform this measure, you'll need to become familiar with the 0-5 rating for erythema, induration and scaling.

The next few slides have photographic examples to guide you.

# PGA for the Assessment of Psoriasis: Erythema Induration Scale



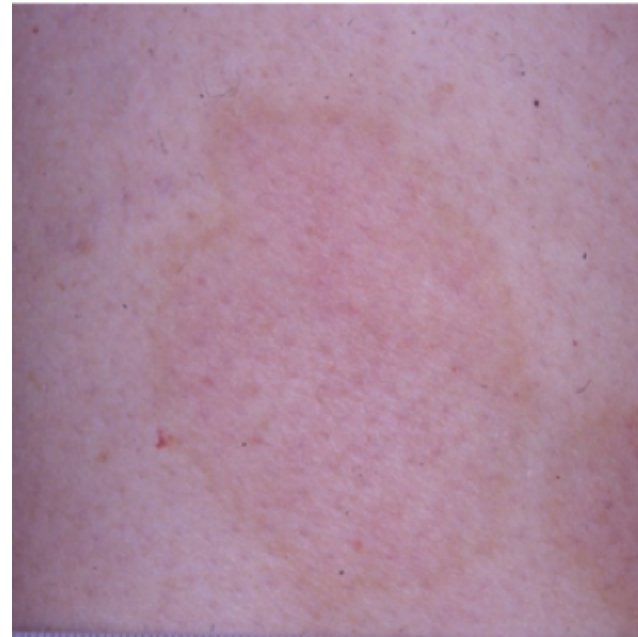
**ERYTHEMA**

INDURATION

SCALE

0=no evidence of  
erythema

(post-inflammatory  
hyperpigmentation and/or  
hypopigmentation may be  
present)



# PGA for the Assessment of Psoriasis: Erythema Induration Scale



**ERYTHEMA**

INDURATION

SCALE

1 = faint erythema



# PGA for the Assessment of Psoriasis: Erythema Induration Scale

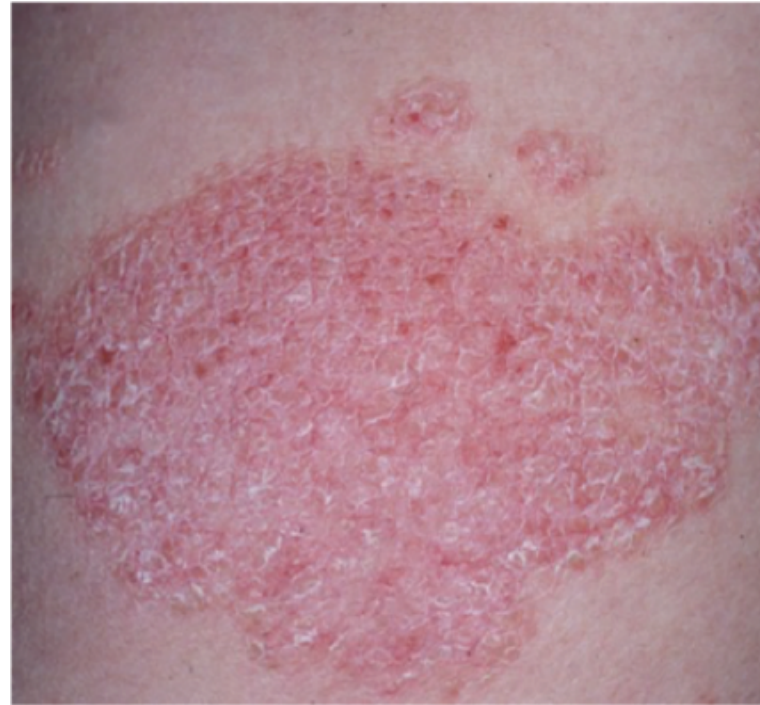


**ERYTHEMA**

2 = Light red

INDURATION

SCALE



# PGA for the Assessment of Psoriasis: Erythema Induration Scale



**ERYTHEMA**

INDURATION

SCALE

3 = moderate red





# PGA for the Assessment of Psoriasis: Erythema Induration Scale



**ERYTHEMA**

INDURATION

SCALE

4= bright red



# PGA for the Assessment of Psoriasis: Erythema Induration Scale

0

1

2

3

4

5

**ERYTHEMA**

INDURATION

SCALE

5= dusky-deep  
red coloration



# Induration:

Defined as thickness or elevation of the plaque above normal skin.

## Caveat:

- We understand it is difficult to learn induration from watching this video.
- The photos are intended to provide visual examples.
- Additional training from dermatologists who perform this in clinical trials may be helpful.

# PGA for the Assessment of Psoriasis: Erythema Induration Scale

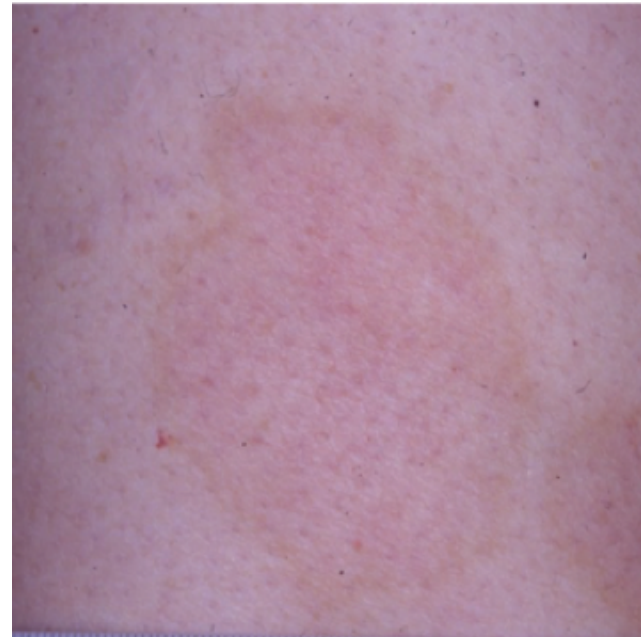


ERYTHEMA

**INDURATION**

SCALE

0=no plaque elevation  
above normal skin



# PGA for the Assessment of Psoriasis: Erythema Induration Scale



ERYTHEMA

**INDURATION**

SCALE

1= minimal  
(~0.25 mm)



# PGA for the Assessment of Psoriasis: Erythema Induration Scale

0 1 2 3 4 5

ERYTHEMA

**INDURATION**

SCALE

2 = mild  
(~0.5 mm)



# PGA for the Assessment of Psoriasis: Erythema Induration Scale



ERYTHEMA

**INDURATION**

SCALE

3 = moderate  
(~0.75 mm)



PGA for the Assessment of Psoriasis:  
Erythema **Induration** Scale



ERYTHEMA

**INDURATION**

SCALE

4=marked elevation  
(~1 mm)





# PGA for the Assessment of Psoriasis: Erythema Induration Scale

0

1

2

3

4

5

ERYTHEMA

**INDURATION**

SCALE

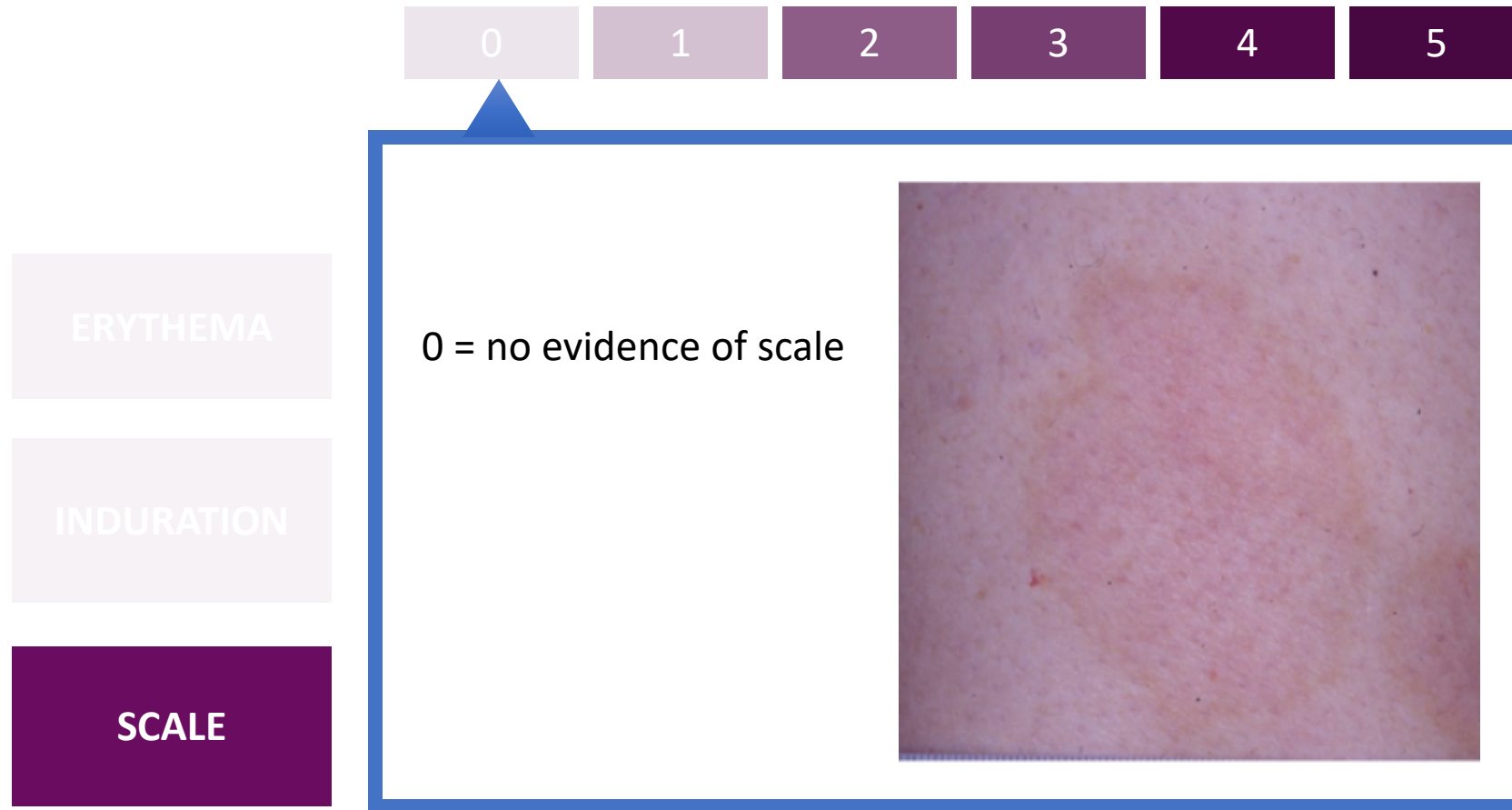
5=severe  
(>1.25 mm)



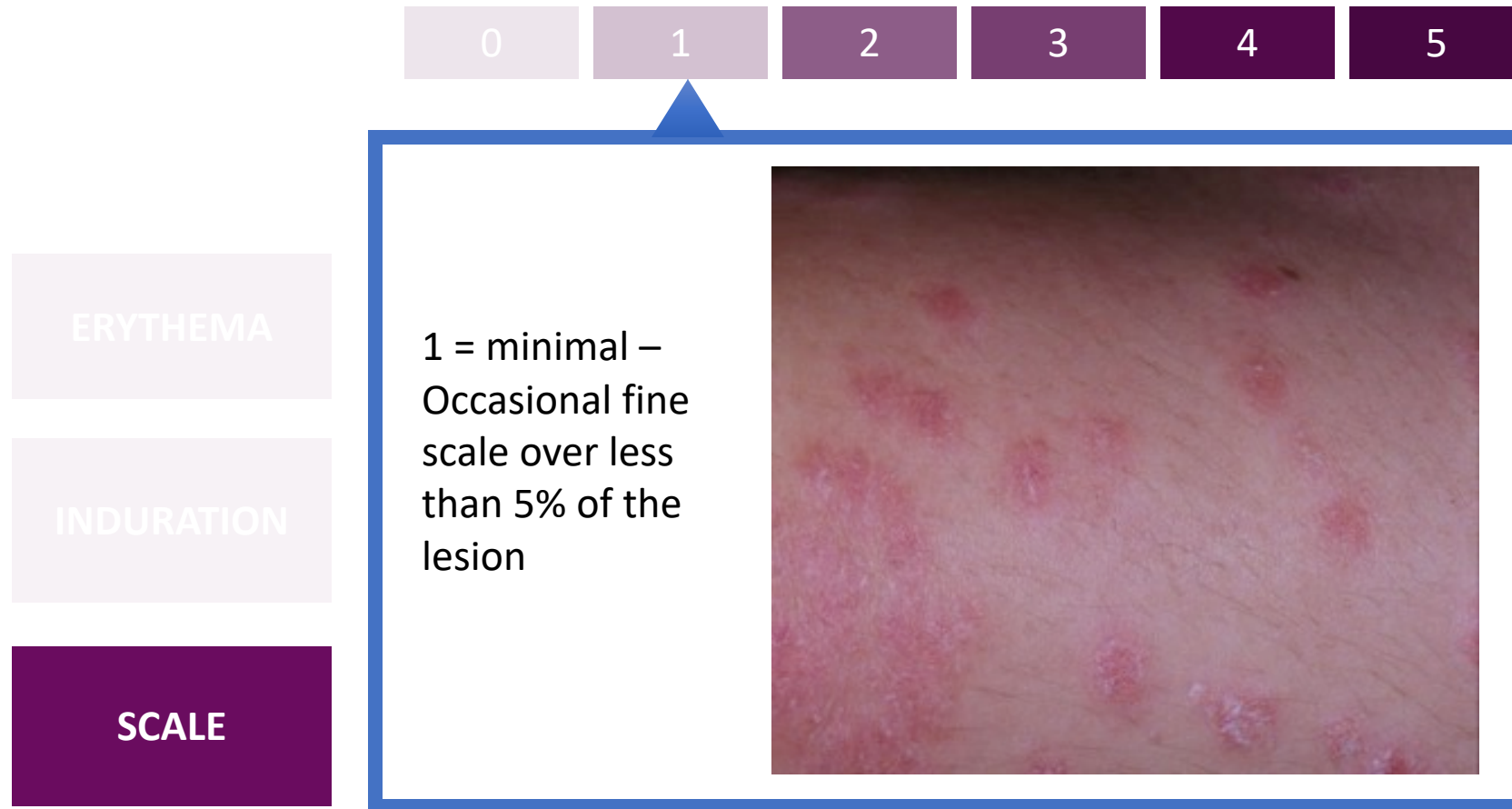
# Scale:

Scale is rated according to the coarseness of the scale and coverage of the lesions.

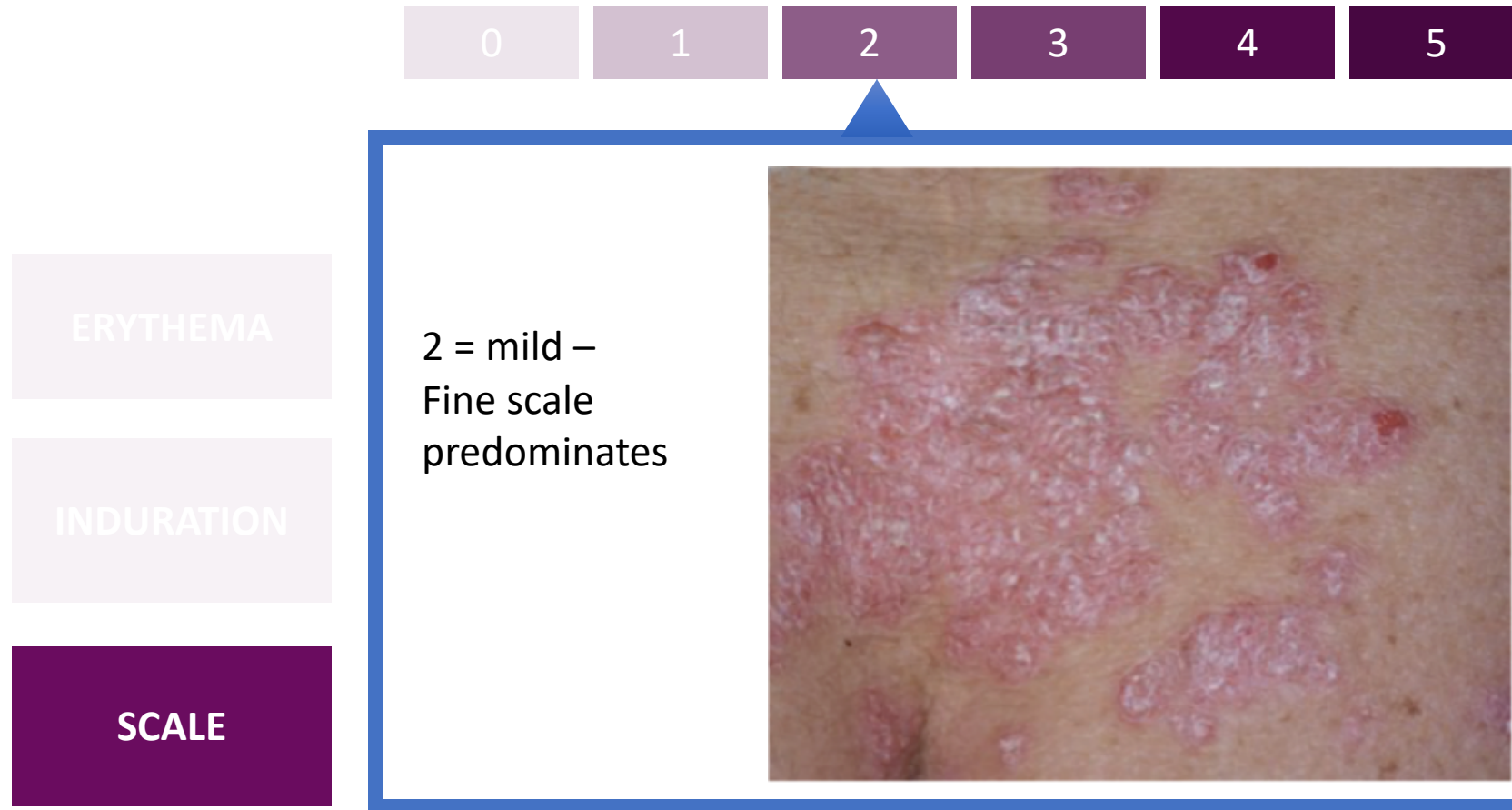
# PGA for the Assessment of Psoriasis: Erythema Induration Scale



## PGA for the Assessment of Psoriasis: Erythema Induration Scale



## PGA for the Assessment of Psoriasis: Erythema Induration Scale



## PGA for the Assessment of Psoriasis: Erythema Induration Scale

0

1

2

3

4

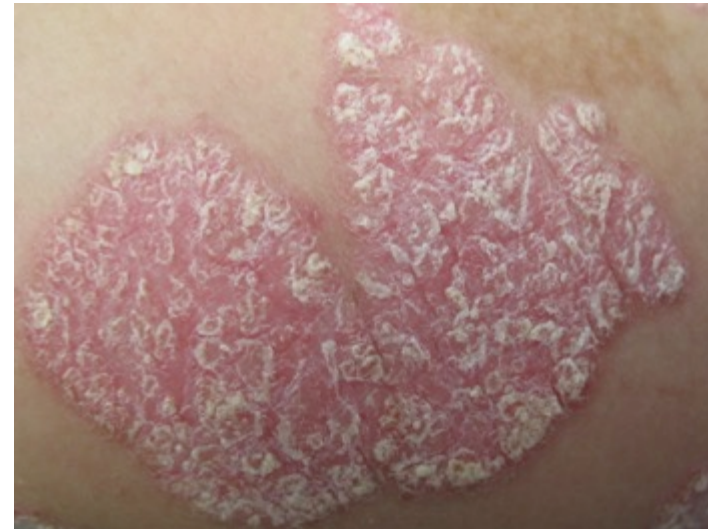
5

ERYTHEMA

INDURATION

SCALE


3 = moderate –  
coarse scale  
predominates



## PGA for the Assessment of Psoriasis: Erythema Induration Scale

	0	1	2	3	4	5
ERYTHEMA						
INDURATION						
SCALE						

4=marked; thick, non-tenacious scale predominates



# PGA for the Assessment of Psoriasis: Erythema Induration Scale

0

1

2

3

4

5

ERYTHEMA

INDURATION

SCALE

5= Very thick tenacious  
scale predominates





# Putting it all together

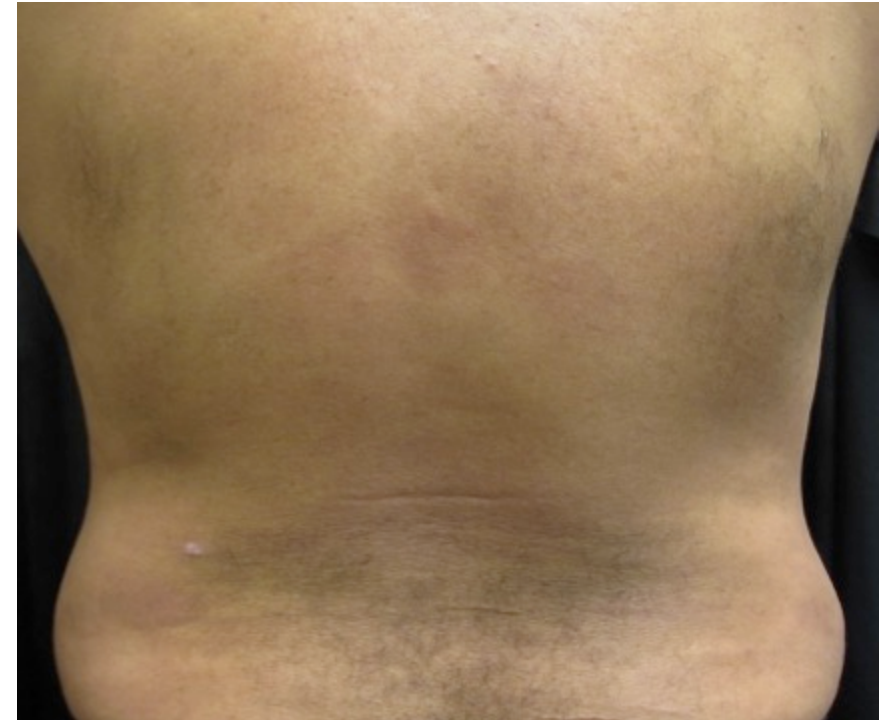
Now that you have a feel for the way to rate erythema, induration, and scale, let's apply this information to regional and whole body examples.

## PGA for the Assessment of Psoriasis

### final PGA score

The final PGA score is an average of the erythema, induration, and scale

Erythema	<input checked="" type="radio"/> 0	<input type="radio"/> 1	<input type="radio"/> 2	<input type="radio"/> 3	<input type="radio"/> 4	<input type="radio"/> 5
Induration	<input checked="" type="radio"/> 0	<input type="radio"/> 1	<input type="radio"/> 2	<input type="radio"/> 3	<input type="radio"/> 4	<input type="radio"/> 5
Scale	<input checked="" type="radio"/> 0	<input type="radio"/> 1	<input type="radio"/> 2	<input type="radio"/> 3	<input type="radio"/> 4	<input type="radio"/> 5
<div><div>AVERAGE</div><div><input checked="" type="radio"/> 0</div><div><input type="radio"/> 1</div><div><input type="radio"/> 2</div><div><input type="radio"/> 3</div><div><input type="radio"/> 4</div><div><input type="radio"/> 5</div></div>						



## PGA for the Assessment of Psoriasis

### final PGA score

The final PGA score is an average of the erythema, induration, and scale

Erythema	<input type="radio"/> 0	<input type="radio"/> 1	<input checked="" type="radio"/> 2	<input type="radio"/> 3	<input type="radio"/> 4	<input type="radio"/> 5
Induration	<input type="radio"/> 0	<input type="radio"/> 1	<input checked="" type="radio"/> 2	<input type="radio"/> 3	<input type="radio"/> 4	<input type="radio"/> 5
Scale	<input type="radio"/> 0	<input type="radio"/> 1	<input checked="" type="radio"/> 2	<input type="radio"/> 3	<input type="radio"/> 4	<input type="radio"/> 5
AVERAGE	<input type="radio"/> 0	<input type="radio"/> 1	<input checked="" type="radio"/> 2	<input type="radio"/> 3	<input type="radio"/> 4	<input type="radio"/> 5



## PGA for the Assessment of Psoriasis: final PGA score

The final PGA score is an average of the erythema, induration, and scale

Erythema	<input type="radio"/> 0	<input type="radio"/> 1	<input checked="" type="radio"/> 2	<input type="radio"/> 3	<input type="radio"/> 4	<input type="radio"/> 5
Induration	<input type="radio"/> 0	<input type="radio"/> 1	<input type="radio"/> 2	<input type="radio"/> 3	<input checked="" type="radio"/> 4	<input type="radio"/> 5
Scale	<input type="radio"/> 0	<input type="radio"/> 1	<input type="radio"/> 2	<input checked="" type="radio"/> 3	<input type="radio"/> 4	<input type="radio"/> 5
<div><div>AVERAGE</div><div><input type="radio"/> 0<input type="radio"/> 1<input type="radio"/> 2<input checked="" type="radio"/> 3<input type="radio"/> 4<input type="radio"/> 5</div></div>						



## PGA for the Assessment of Psoriasis

### final PGA score

The final PGA score is an average of the erythema, induration, and scale

Erythema	<input type="radio"/> 0	<input type="radio"/> 1	<input checked="" type="radio"/> 2	<input type="radio"/> 3	<input type="radio"/> 4	<input type="radio"/> 5
Induration	<input checked="" type="radio"/> 0	<input type="radio"/> 1	<input type="radio"/> 2	<input type="radio"/> 3	<input type="radio"/> 4	<input type="radio"/> 5
Scale	<input type="radio"/> 0	<input checked="" type="radio"/> 1	<input type="radio"/> 2	<input type="radio"/> 3	<input type="radio"/> 4	<input type="radio"/> 5
<div><div>AVERAGE</div><div><input type="radio"/> 0</div><div><input checked="" type="radio"/> 1</div><div><input type="radio"/> 2</div><div><input type="radio"/> 3</div><div><input type="radio"/> 4</div><div><input type="radio"/> 5</div></div>						



## PGA for the Assessment of Psoriasis

final PGA score

The final PGA score is an average of the erythema, induration, and scale

Erythema	<input type="radio"/> 0	<input type="radio"/> 1	<input type="radio"/> 2	<input type="radio"/> 3	<input checked="" type="radio"/> 4	<input type="radio"/> 5
Induration	<input type="radio"/> 0	<input type="radio"/> 1	<input type="radio"/> 2	<input type="radio"/> 3	<input checked="" type="radio"/> 4	<input type="radio"/> 5
Scale	<input type="radio"/> 0	<input type="radio"/> 1	<input type="radio"/> 2	<input checked="" type="radio"/> 3	<input type="radio"/> 4	<input type="radio"/> 5
<div><div>AVERAGE</div><div><input type="radio"/> 0<input type="radio"/> 1<input type="radio"/> 2<input type="radio"/> 3<input checked="" type="radio"/> 4<input type="radio"/> 5</div></div>						







Most plaques on body have  
E, I, S = 2



One lesion has E, I, S = 3

PGA 2

# A few caveats...

- This not the only PGA out there



# A few caveats...

- This not the only PGA out there
- The scores are applicable to mainly lighter Fitzpatrick skin types

# A few caveats...

- This not the only PGA out there
- The scores are applicable to mainly lighter Fitzpatrick skin types
- The PGA doesn't correlate perfectly with quality of life

# For more information:

[www.aad.org/410](http://www.aad.org/410)