

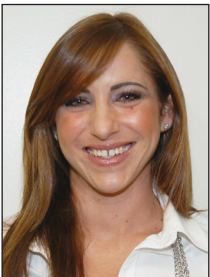
Dermoscopy Buzzwords and Phrases

Sheila M. Valentín Nogueras, MD, and Elena Nogales, MD. (Updated July 2015*)

Skin tumor or disorder	Dermoscopic findings
Melanocytic lesions	
Melanoma	Atypical pigment network present; irregular granularity in association with red or white colors; linear, irregular, polymorphous or corkscrew atypical vessels; milky-red globules; blue-whitish veil; depigmented areas and pseudopods (invasive melanoma); streaks; atypical dots and/or globules (especially peripheral rim)
Acral melanoma	Parallel ridge and bizarre pattern
Congenital melanocytic nevus	Terminal hairs; cobblestone/globular or homogenous pattern or multi-component pattern; milia like cysts; crypts and fissures
Spitz/Reed nevus	Starburst pattern
Dermal nevus	Cobblestone pattern; comma vessels
Acral nevus	Parallel furrow, lattice-like, and fibrillar patterns
Blue nevus	Homogenous blue-metallic areas*
Vulvar melanosis	Ring-like pattern
Benign Nevi NOS	Diffuse reticular, patchy reticular, peripheral reticular with central hyper- or hypopigmentation, and peripheral reticular with central globules
Non-melanocytic lesions	
Basal cell carcinoma	Arborizing vessels; leaf-like structures; blue-gray ovoid nests and globules (pigmented BCC); spoke-wheel areas; ulceration
Seborrheic keratosis	Milia-like cysts (>2); comedo-like openings; fingerprint-like structures; cerebriform pattern; hair-pin vessels; moth eaten borders; sharp demarcation; negative wobble sign
Solar lentigo	Fingerprint-like structures
Keratoacanthoma	Central brownish structure-less area and hairpin vessels on a whitish background
Sebaceous hyperplasia	Aggregated white-yellow nodules and crown vessels (radial wreath-like)
Hemangioma	Red-bluish "lakes" (lacunar or saccular pattern)
Dermatofibroma	Pigment network (+/-); central white patch
Lichen planus-like keratosis	Granular pattern (early); regression (late)
Clear-cell acanthoma	Dotted vessels arranged in a serpiginous (string of pearls) pattern surrounded by a whitish halo; translucent collarette scaling
Bowen's disease	Glomerular vessels; scaly surface; small brown globules and/or homogeneous pigmentation (pigmented BD)
Actinic keratoses	Rosette sign; "strawberry pattern"
Squamous cell carcinoma	Rosette sign; glomerular vessels; radial streaks, globules, and homogeneous blue pigmentation (pigmented SCC)
Eccrine poroma	White to pink halo; pink-white structure-less areas; glomerular vessels
Pyogenic granuloma	Reddish homogenous area; white collarette
Other skin disorders	
Lichen planus	Polymorphic pearly whitish structure (Wickham striae); radial capillaries
Psoriasis	Multiple uniformly sized and distributed dotted vessels; central surface scale
Scabies	"Triangle sign" (mite's head); curved-white line(scale)
Lichen aureus	Coppery-red background; round to oval red dots, globules, and patches; gray dots; partial network of interconnected pigmented lines
Disseminated superficial actinic Porokeratosis (DSAP)	Single or double "white track" structure
Supernumerary nipple	Central white scar-like area; cleft-like appearance in the central region; fine pigment network in the periphery



Dr. Elena Nogales M.D., is a second-year resident in the department of dermatology at the University of Puerto Rico.



Sheila M. Valentín Nogueras, M.D., is an assistant professor in the department of dermatology at the University of Puerto Rico.

Dermoscopy Buzzwords and Phrases

Sheila M. Valentin Noguera, MD, and Elena Nogales, MD. (Updated July 2015*)

Skin tumor or disorder	Dermoscopic findings
Alopecias	
Alopecia areata	Numerous yellow dots, black dots; broken hairs, and clustered short vellus hairs; exclamation mark hairs (indicate disease activity)
Androgenetic alopecia	Variability in hair shaft diameter >20%; early: peripilar brown depressions; advanced: yellow dots
Telogen effluvium	Empty follicles, short re-growing hairs and < 20% hair diameter diversity
Trichotillomania	Black dots; broken hairs, hair shafts of different lengths, coiled hairs; few yellow dots in some cases
Lichen plano-pilaris	Absence of follicular openings; perifollicular scales (peripilar casts); perifollicular erythema
Discoid lupus erythematosus	Mottled dyschromia; follicular plugs; telangiectasias; white central plaque; blue-grey dots in a "speckled" pattern; follicular red dots

*may see in melanoma as well

*Reviewed and updated July 2015 by: Elise Herro, MD, Alina Goldenberg, MD, Emily deGolian, MD, and Sharon Jacob, MD.

References

- Malvey J, Puig S, Argenziano G, Marghoob A, Peter Soyer H. Dermoscopy report: Proposal for standardization. *J Am Acad Dermatol.* 2007;57: 85-95.
- Saida T, Miyazaki A, Oguchi S, et al. Significance of dermoscopic patterns in detecting malignant melanoma on acral volar skin: results of a multicenter study in Japan. *Arch Dermatol.* 2004;140: 1233-8.
- Ferrari A, Buccini P, Covello R, et al. The ringlike pattern in vulvar melanosis: a new dermoscopic clue for diagnosis. *Arch Dermatol.* 2008;144: 1030-4.
- Zaballos P, Puig S, Llambrich A, Malvey J. Dermoscopy of dermatofibromas: a prospective morphological study of 412 cases. *Arch Dermatol.* 2008;144: 75-83.
- Zalaudek I, Hoffmann-Wellenhof R, Argenziano G. Dermoscopy of Clear-Cell Acanthoma Differs from Dermoscopy of Psoriasis. *Dermatology.* 2003;207: 428.
- Zalaudek I, Argenziano G, Leinweber B, et al. Dermoscopy of Bowen's disease. *Br J Dermatol.* 2004;150: 1112-6.
- Peris K, Micantonio T, Piccolo D, Fargnoli MC. Dermoscopic features of actinic keratoses. *J Dtsch Dermatol Ges.* 2007;5: 970-6.
- de Giorgi V, Alfaioli B, Papi F, et al. Dermoscopy in pigmented squamous cell carcinoma. *J Cutan Med Surg.* 2009;13: 326-9.
- Ferari A, Bucini P, Silipo V, De Simone P, Mariani G, Marenza S. Eccrine Poroma: A Clinical-Dermoscopic Study of Seven Cases. *Acta Derm Venereol* 2009;89: 160-4.
- Zaballos P, Llambrich A, Cuéllar F, Puig S, Malvey J. Dermoscopic findings in pyogenic granuloma. *Br J Dermatol.* 2006;154: 1108-11.
- Braun RP, Gaide O, Oliviero M, et al. The significance of multiple blue-grey dots (granularity) for the dermoscopic diagnosis of melanoma. *Br J Dermatol* 2007;157: 907-13.
- Braun RP, Rabinovitz H, Tzu JE, Marghoob AA. Dermoscopy Research — An Update. *Semin Cutan Med Surg.* 2009;28:165-71
- Campos-do-Carmo G, Ramos-e-Silva, M. Dermoscopy: basic concepts. *Int J Dermatol.* 2008; 47:712-19.
- Bugatti L, Filosa G. Dermoscopy of lichen planus-like keratosis: a model of inflammatory regression. *J Eur Acad Dermatol Venereol.* 2007;21: 1392-7.
- Cuellar F, Vilalta A, Puig S, Palou J, Salerni G, Malvey J. New dermoscopic pattern in actinic keratosis and related conditions. *Arch Dermatol.* 2009; 145:732.
- Vázquez-López F, Gómez-Díez S, Sánchez J, Pérez-Oliva N. Dermoscopy of active lichen planus. *Arch Dermatol.* 2007;143: 1092.
- Zalaudek I, Argenziano G. Dermoscopy subpatterns of inflammatory skin disorders. *Arch Dermatol.* 2006;142: 808.
- Dupuy A, Dehen L, Bourrat E, et al. Accuracy of standard dermoscopy for diagnosing scabies. *J Am Acad Dermatol.* 2007; 56: 53-62.
- Zaballos P, Puig S, Malvey J. Dermoscopy of pigmented purpuric dermatoses (lichen aureus): a useful tool for clinical diagnosis. *Arch Dermatol.* 2004;140: 1290-1.
- Zaballos P, Puig S, Malvey J. Dermoscopy of Disseminated Superficial Actinic Porokeratosis. *Arch Dermatol.* 2004;140: 1410.
- Oztas MO, Gurer MA. Dermoscopic features of accessory nipples. *Int J Dermatol.* 2007; 46: 1067-8. A, Torres F. Dermoscopy in the Diagnosis of Hair and Scalp Disorders. *Actas Dermosifiliogr.* 2009;100: Suppl 1: 114-9.