

BSA

Body Surface Area

Body Surface Area (BSA)

- BSA is a commonly used assessment of severity of skin disease
- Defined as the percentage of the surface area of the body involvement affected by the condition being assessed (e.g. psoriasis)

BSA: two most common methods

Handprint Method

Rule of Nines

BSA: 2 methods

Handprint Method

- Most common method in psoriasis clinical trials and clinical practice

Rule of Nines

- Developed by burn surgeons
- Divides body into regions or multiples of 9%
 - (perineum/genitals 1%)

Wallace AB. Some experiences in local burn care. *Br J Plast Surg*. 1951

Agarwal P, Sahu S. Determination of hand and palm area as a ratio of body surface area in Indian population. *Indian J Plast Surg*. 2010.

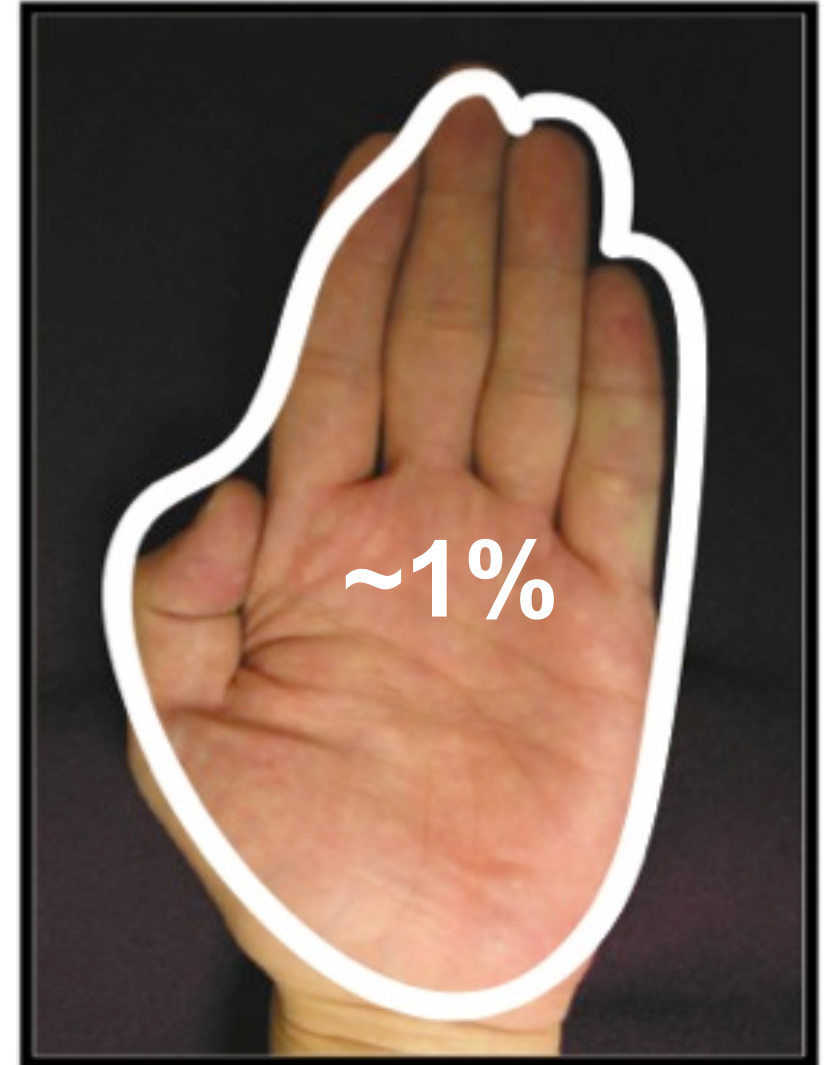
Long CC, Finlay AY, Averill RW. The rule of hand: 4 hand areas = 2 FTU = 1 g. *Arch Dermatol* 1992.

Rossiter ND, Chapman P, Haywood IA. How big is a hand? *Burns* 1996

Thomas CL, Finlay AY. The 'handprint' approximates to 1% of the total body surface area whereas the 'palm minus the fingers' does not. *Br J Dermatol*. 2007

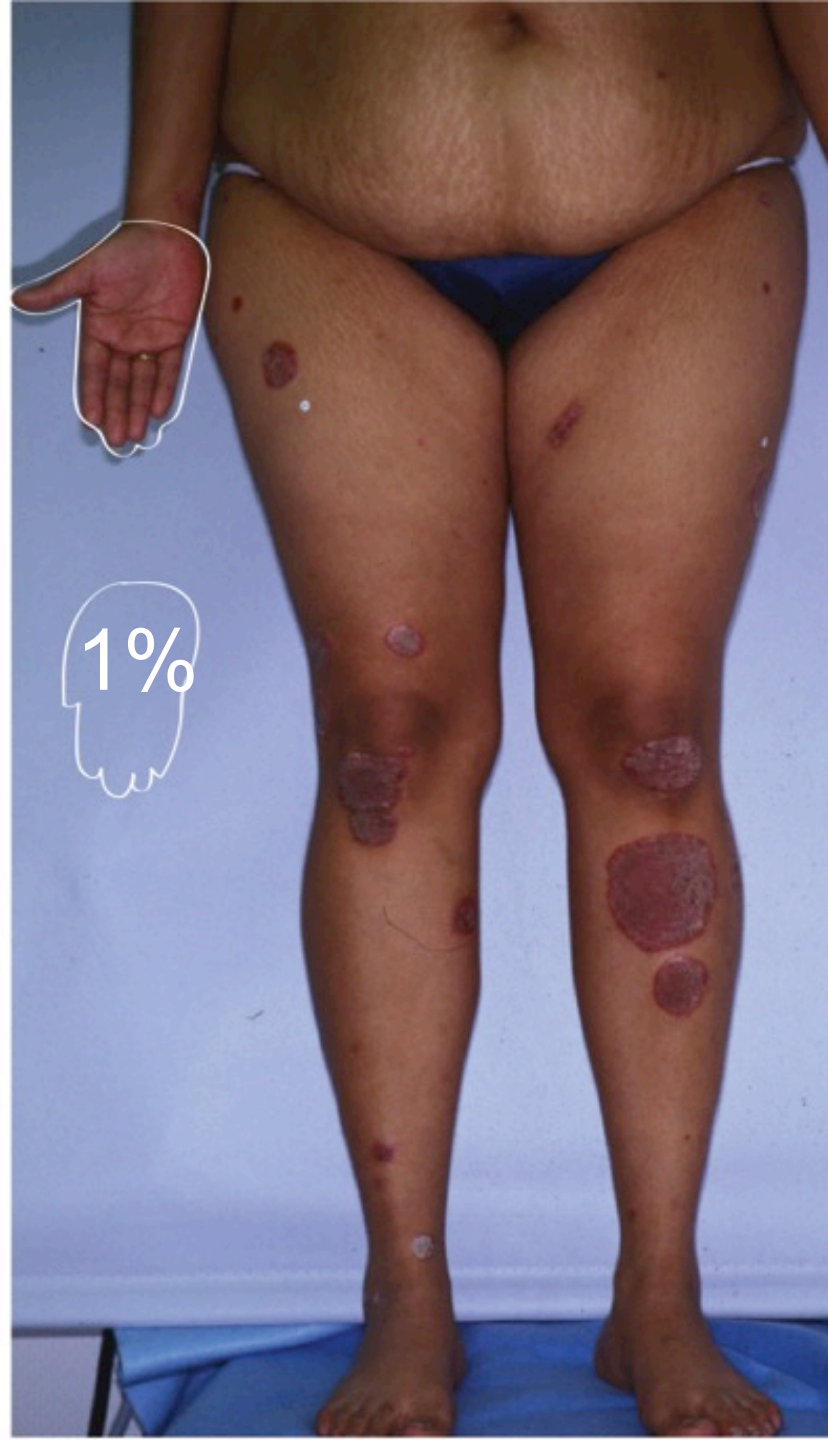
We recommend using the handprint method

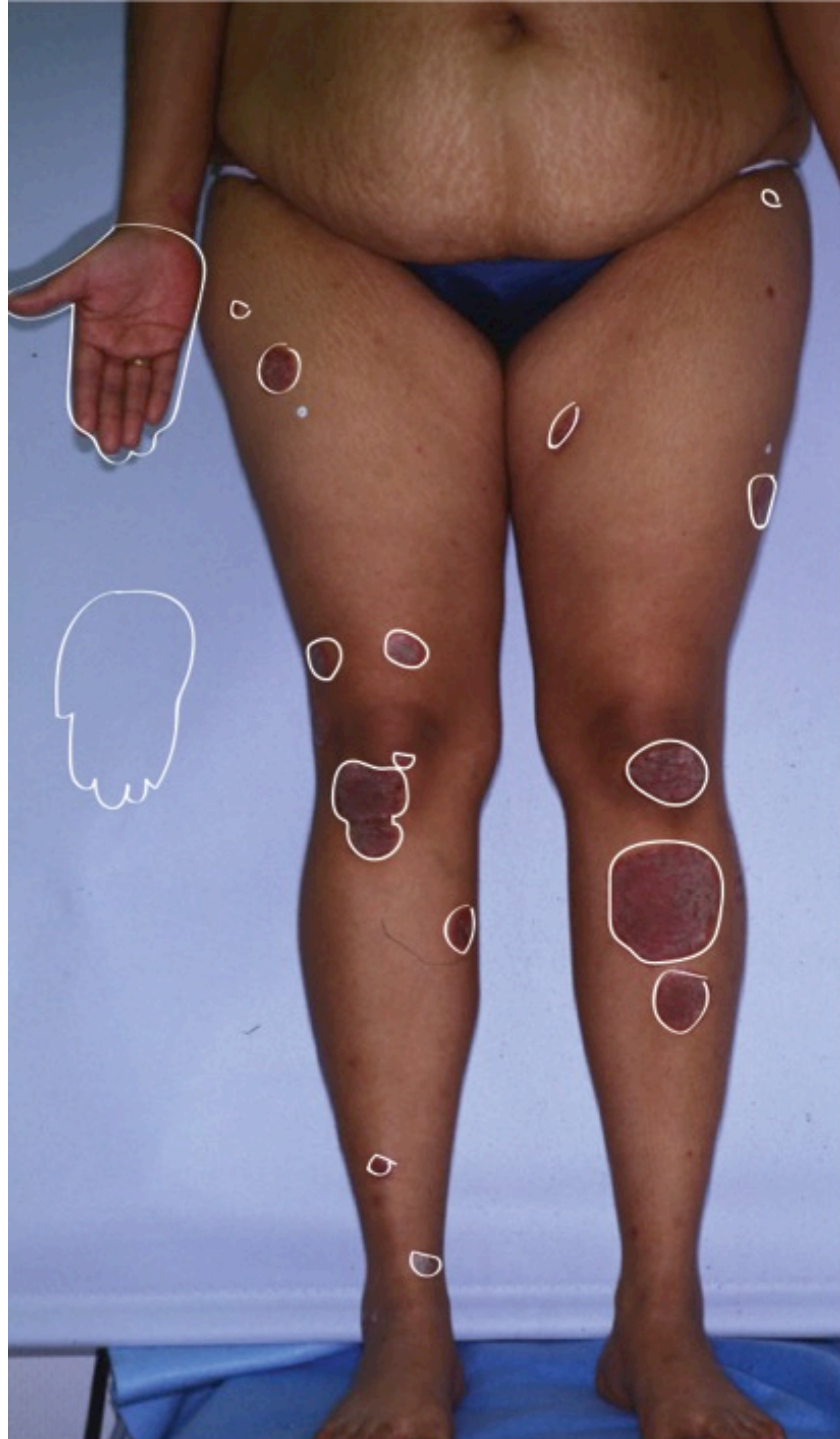
The patient's full HANDPRINT
(includes area of palm and all
5 digits) = **1% BSA**

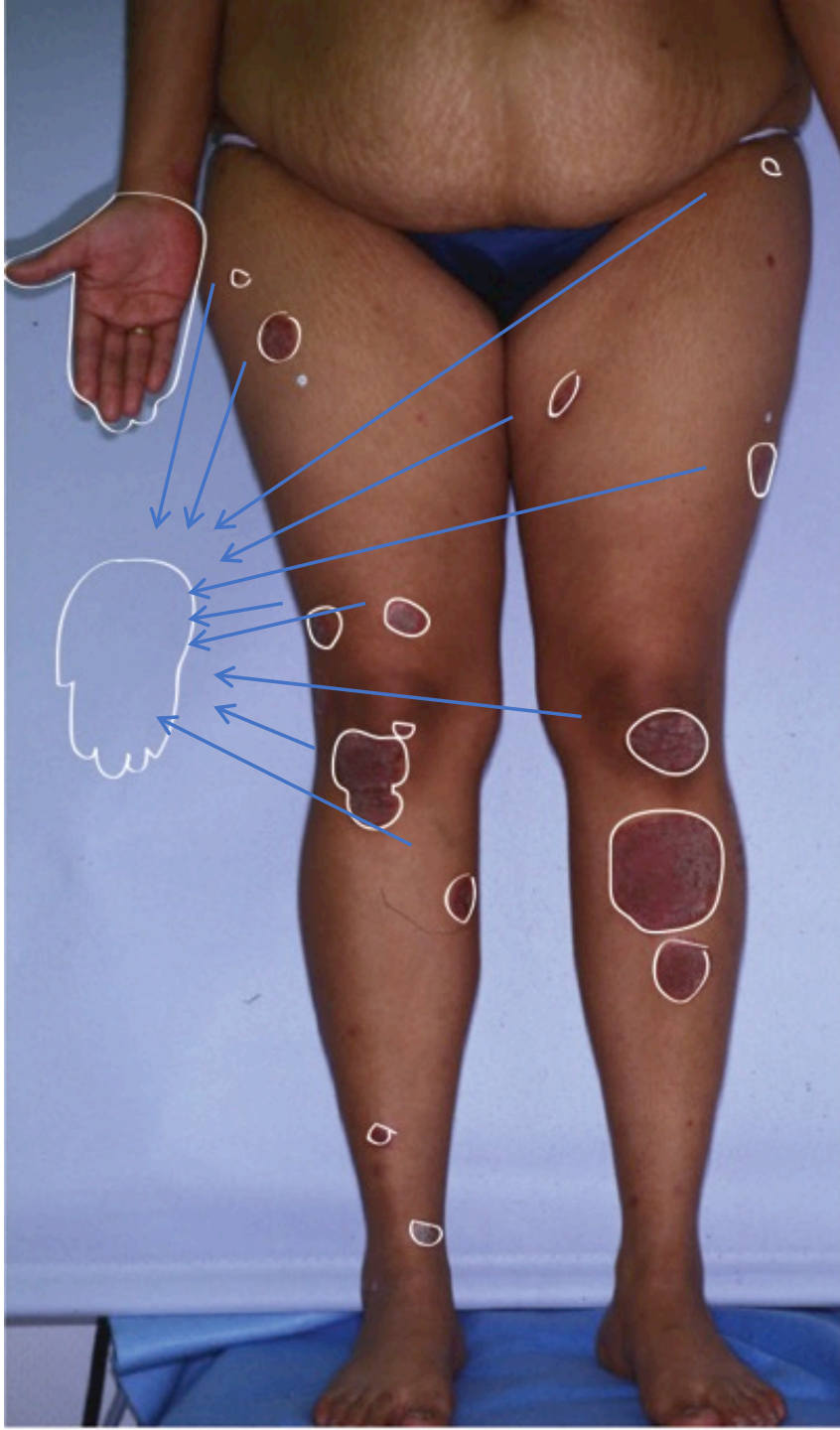


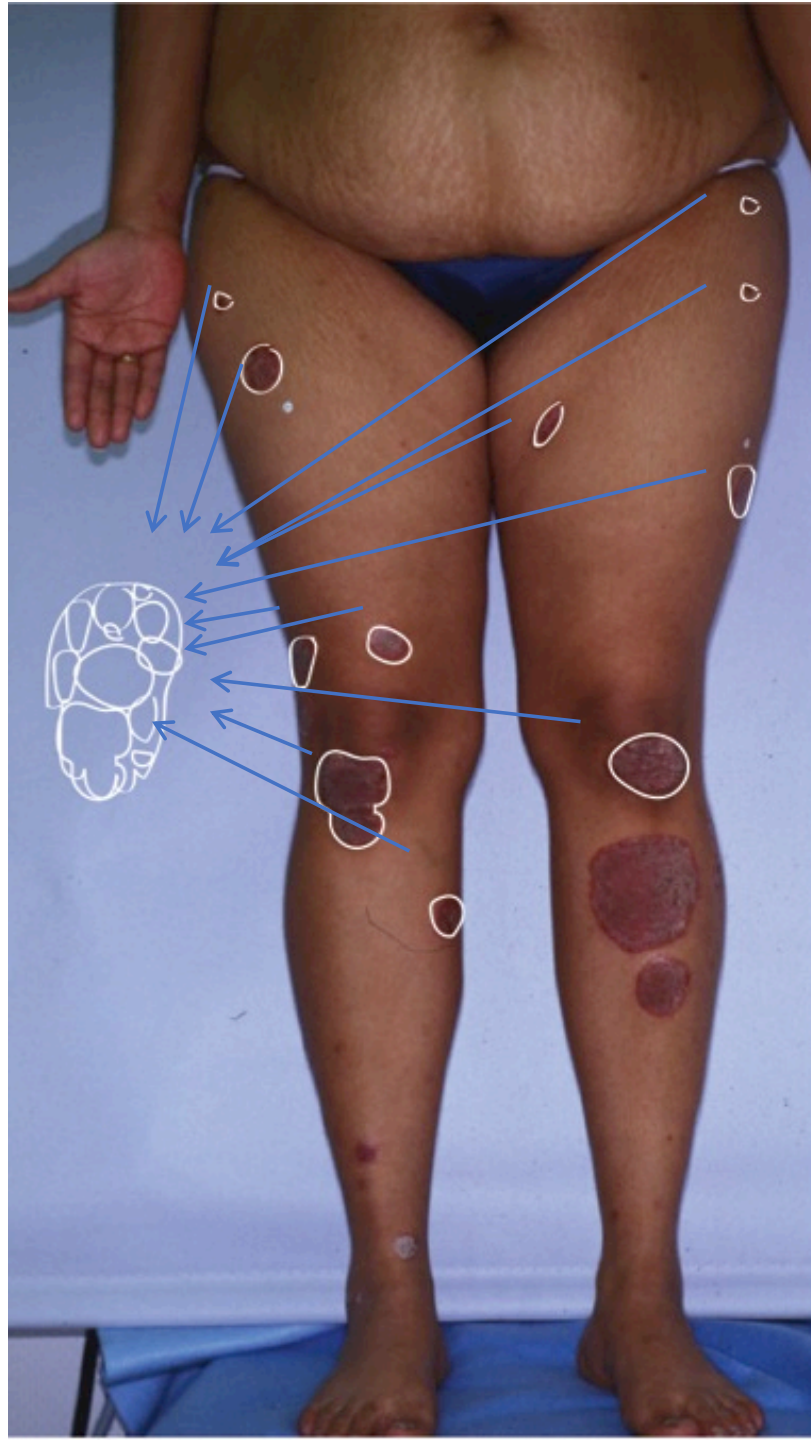
Examples

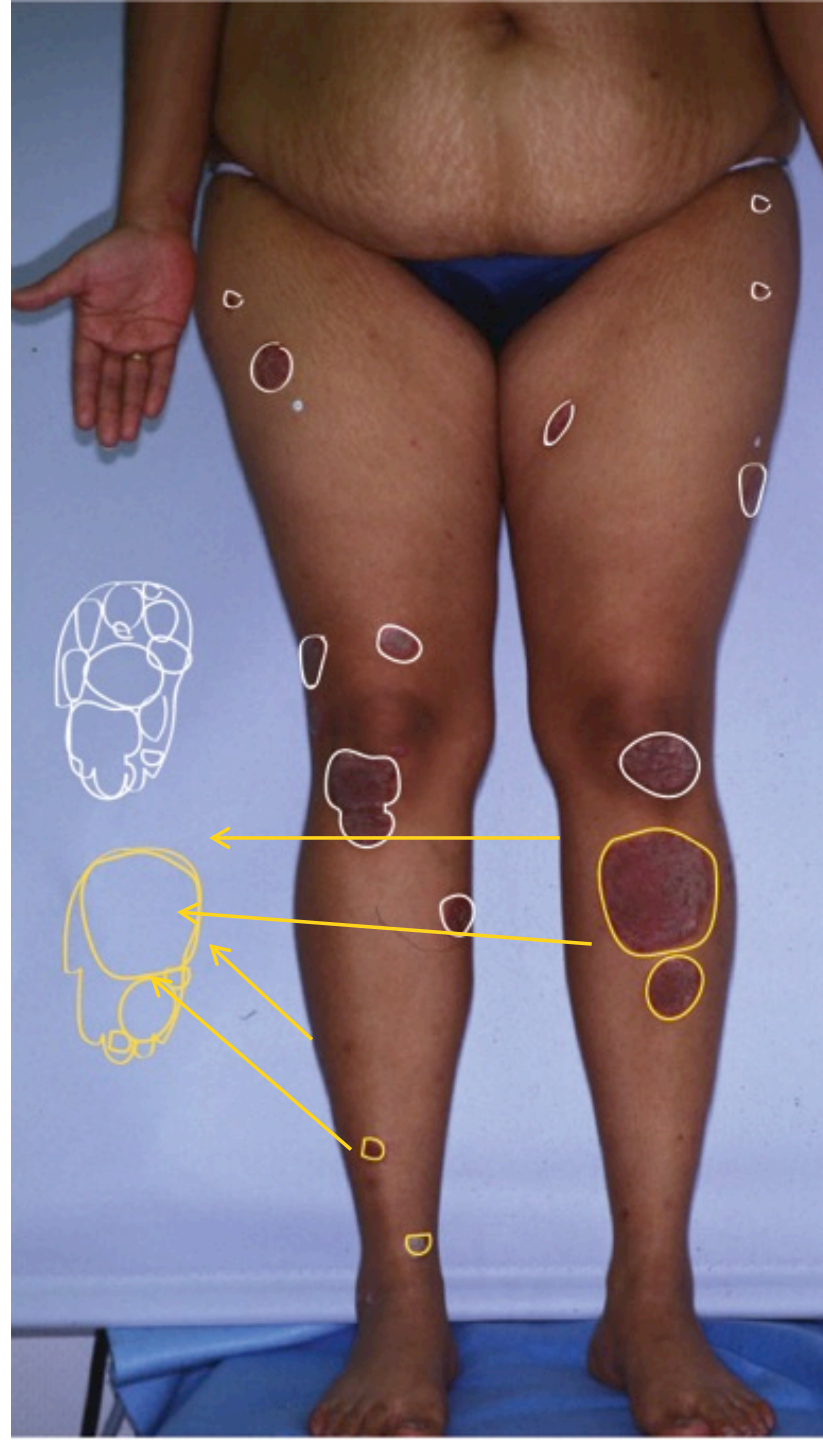
how to do a BSA with the
handprint method

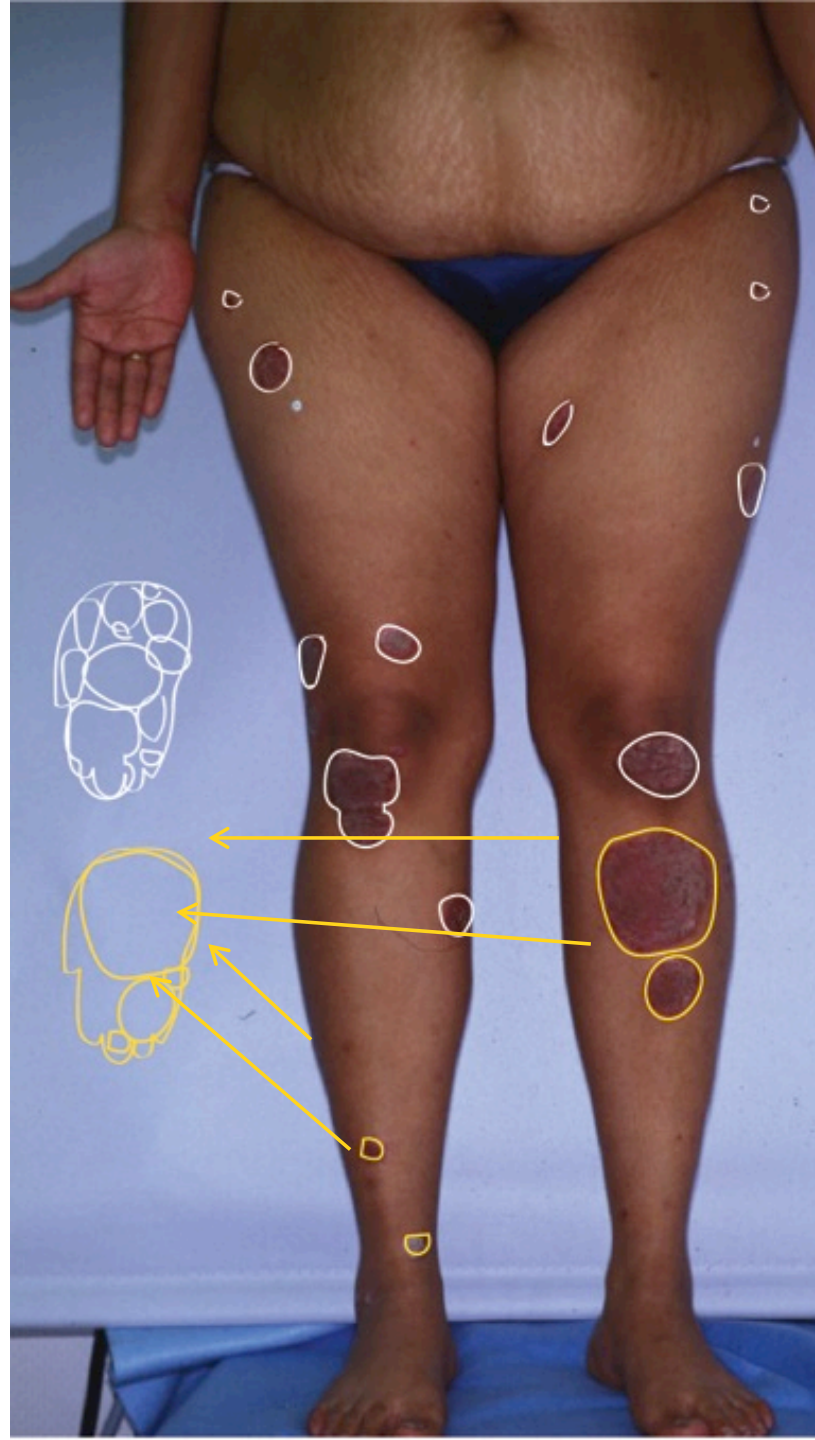










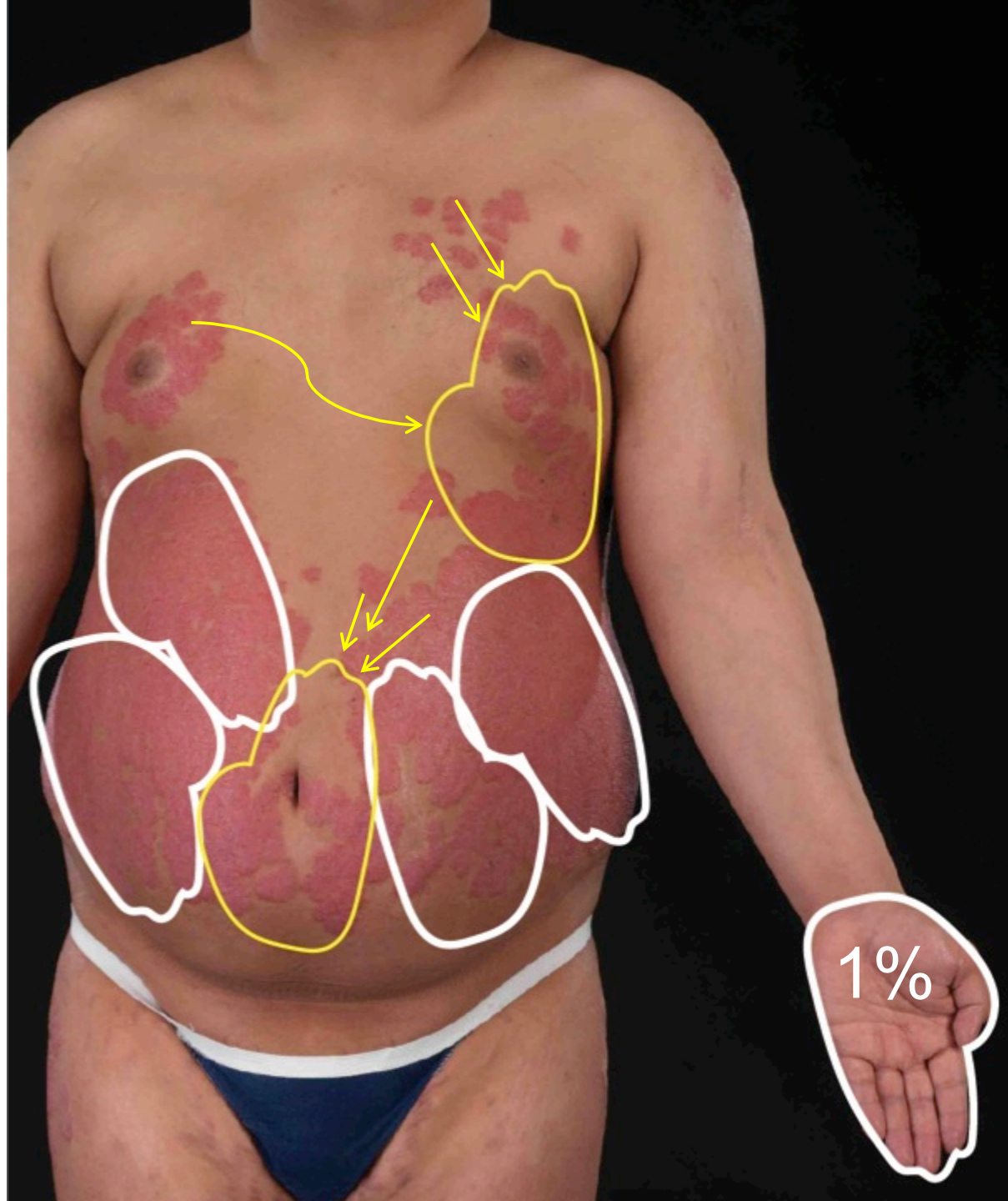


BSA ~1.5%









BSA ~6%

1%

For more information:

www.aad.org/410