



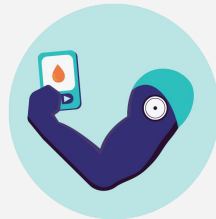
# February PO Monthly Call

02/10/2025

02/12/2025

# AGENDA

1. Regional Meeting Registration Open
2. PO Reports coming very soon
3. Steering Committee Nominations
4. Research Committee Coming
5. Site Visit Interest Form
5. PO Small Group Calls
6. Low Carb Diet Training Sign Up Form
7. PO Focus Groups for Dashboard
8. Specialist VBR requirements



# Regional Meeting Registration Open

- Distributed on 2/4/2025
- All PCP, Endocrinology, and Nephrology clinical champions required to attend
- Please ensure that your practices register by March 25th
- Spring meetings will continue to be held **in-person** and fall meetings will be held virtually

# Spring Regional Meeting Agenda

*Attendees: PCP Clinical Champions, Endocrinology Clinical Champions, Nephrology Clinical Champions*

<b>Time</b>	<b>Presentation Title</b>	<b>Speaker</b>
6:00pm - 6:30pm	Welcome & Updates	Lauren Oshman, MD MCT2D Program Director  Heidi Diez, PharmD MCT2D Program Co-Director
6:30pm - 7:00pm	Updates from Endocrinology	Kara Mizokami-Stout MCT2D Endocrinology Program Director
7:00pm - 7:30pm	Networking and Poster Presentations	N/A
7:30pm - 8:00pm	Updates from Nephrology	Mike Heung, MD MCT2D Nephrology Program Director

# Update Performance Reporting

- Will be sending you updated performance reports on your practices' performance on the A1C metric very soon (target date of end of week/early next week).
- Wanted to go over caveats and explanations of the report to ensure that you have clarity on what you are looking at.

# VBR Performance Reports Caveats and Explanations

- POs that merged will have two aggregated practice groups, their original, and the aggregated group from the PO that merged with them. We wanted to align as closely as possible with the baseline data that was shared with you and therefore decided to keep these separate since the mergers occurred after the performance measures already started.
- The practice alignment on the Patient Data Dashboard reflects the Fall 2024 PGIP list. However, these reports reflect practice alignment as of the Winter 2025 PGIP list. We did this so that POs can see the current performance of their aligned practices and provide support as needed.
- We also reflected any PO or practice names changes that occurred between the Fall 2024 and Winter 2025 PGIP lists.
- If a single practice (meaning not a PO merger) moved to a new PO and had less than 100 patients, they are now included in their new PO's aggregate group. If this single practice moved to a recently merged PO, the new practice would be added to the primary PO's aggregate group.
- For practices that closed/merged with another practice, we removed these patients, keeping with our original plan to not add new patients to practices during the performance year.

# Differences Between MCT2D Push Reports and the Patient Data Dashboard

## Baseline Data/Progress Report Data

- The baseline population (shared in September) was based on data and patient attribution through 5/31/2024.
- Patients who switched practices after 5/31/2024 are excluded from their new practice's denominator, ensuring new practices aren't penalized for not having the full reporting period to lower these patients' A1C.
- Uses winter 2025 PGIP list

## Patient Data Dashboard Data

- Since the Patient Data Dashboard performance measure visualization was added after the measure launched, it was based on data and patient attribution through 9/30/2024.
- Patients are included in the denominator of the practice they were attributed to at that time Patient Data Dashboard performance measure visualization was built, which may differ slightly from the baseline population.
- If a patient moved practices or physicians between 5/31/2024 and 9/30/2024, or a practice closed/merged during that time frame, this will result in discrepancies between the progress report and patient data dashboard.
- Uses fall 2024 PGIP list

# Steering Committee Nominations Open

- 2 PO spots and 3 practice level spots open on steering committee
- Will count for practice level or PO level learning community credit
- Please email Jackie Rau or Lypha Yang if you are interested in participating and we will add you to the nominee list
- Nominations due by *2/17/2025*





## SITE VISITS COMING APRIL, MAY 2025

### 4 STOPS



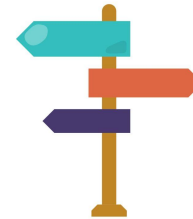
- Kalamazoo  
(*Grey Wolf*)
- Grand Rapids  
(*Bluegill*)
- Saginaw  
(*Riverwalk*)
- Traverse City  
(*Sleeping Bear*)

### WHAT WE'LL DO



- Meet teams
- Hear your challenges and successes
- Share MCT2D resources
- Time commitment is ~ 2 to 3 hours

### NEXT STEPS



#### Interest forms due Feb 17

- Practices chosen by 3/1

**Interested? Let us know!**

# Research Committee

- MCT2D will be forming a research committee as outlined in the participation agreement.
- Will be soliciting members as we did with the steering committee.
- Participation will count for practice level or PO level learning community credit.
- Committee will be responsible for determining what research collaborative can, and cannot be used for.
- More details to come!

# PO Small Group Calls

Purpose: Facilitate conversation between POs instead of only with MCT2D

Rational: So that POs who have had success in areas where others are struggling can share their approach and solutions.

Discussion topics will include:

1. What is one thing that is going well for you that you can share?
2. What is one issue that you still haven't figured out or solved? (e.g. data submission, engaging physicians, etc.)?
3. What implementation support do you need?
4. Thoughts and input on potential future performance measures

# PO Small Group Calls Cont.

## **Group 1 - 2/6/25 at 11am**

1. Michigan Medicine
2. Jackson Health
3. Bronson
4. MidMichigan Collaborative Care Organization

## **Group 2 - 2/11/25 at 9am**

1. GMP Network
2. Primary Care Partners Inc
3. Lakeland Care
4. Metro Health Integrated Network

## **Group 3 - 2/21/25 at 1pm**

1. Beaumont
2. United Physicians
3. Oakland Southfield Physicians
4. Medical Network One
5. Integrated Health Partners

## **Group 4 - 2/26/25 at 2pm**

1. Northern Michigan Care Partners
2. CIPA
3. St. Mary's PHO
4. Great Lakes OSC
5. Answer Health

# Workshop

- Will be limiting to a small group (8-12) of participants to foster collaboration and dialogue with a plan to offer additional future sessions.
- Due to the small size, we will be prioritizing individuals who can commit to all sessions, who champion low carbohydrate education at their practices, as well as other criteria.
- Interest forms due TODAY, February 10th.
  - Interest form email was sent out on 01/27/2025
- We will select attendees who are the best fit for the program and notify you of their acceptance by Monday, February 24th.

**Monday, May 12th- Friday, May 16th, 7am-8am each day (5 hours total)**

**Led by Rina Hisamatsu, RDN, and guest speakers**

*Participation will meet both practice level learning community requirement and the physician level learning community requirement if attendee is a physician.*

# PO Dashboard Focus Groups

- This year's PO Scorecard requires either participation in a focus group on the Patient Data Dashboard redesign or in a 1on1 feedback session for the admin portal.
- The first focus group was held in October 2024 with two more focus groups coming up in February and May.
- Email sent with a calendly link to sign up
- If interested in participating in only the February focus group, only select February dates. If interested in only the May focus group, select only May dates.
- Admin portal 1-on-1 sessions will be available in late April/early May, with more details coming soon.

## February - Provide input on designs for the Patient Data Dashboard Patient List and Patient Profile page

Join us to discuss the future of MCT2D's Patient Data Dashboard core features including the patient list (or patient identification tool) and the patient profile page. During this interactive, 1-hour call, we will ask for your feedback on what would be the most helpful for you and your practices to inform the future of our dashboard. If you want to use our dashboard to help identify patients in need of care, this focus group is for you!

## May - Beta test our first two Patient Data Dashboard prepopulated reports

Join us for an interactive, 1-hour call to test and provide feedback on our first two prepopulated reports. We will use your feedback to make key updates before release and discuss the next round of report development. If you want to help guide how MCT2D reports on you and your practices' data, this focus group is for you!

<https://calendly.com/d/cnjn-qy5-mv5/po-dashboard-focus-groups>

# Endocrinology Participation Measures:

## Continuing Practices

80 points of 100 possible points must be earned to continue being eligible for VBR

1	25%	<b>Attend MCT2D Spring 2025 regional meeting.</b> Practice clinical champion required to attend in person. If practice clinical champion is unable to attend, another physician may attend in their place.	
		Meeting attended by clinical champion or substitute physician	<b>25</b>
		Meeting not attended	0
2	30%	<b>Attend Fall 2025 Endocrinology Clinical Champion Meeting.</b>	
		Meeting attended by clinical champion or substitute physician	<b>30</b>
		Meeting not attended	<b>0</b>
3	20%	<b>PCP Partnership Projects</b>	
		<b>If in participation year 3+ :</b> Share progress and final outcomes on 2024 PCP Partnership Project via poster at spring regional meetings. Poster template will be provided and printed on your behalf.	
		<b>If in participation year 2 :</b> Work with your physician organization to choose at least one primary care practice within your PO that is participating in MCT2D. Work together to identify one aspect of care coordination or patient co-management that can be improved, and develop a plan for process improvement, for example, partnering to develop an improved referral/hand off process. Partner defined: April 1, 2025 Plan submitted: June 16, 2025 Feedback: Fall 2025 Endocrinology Clinical Champion Meeting <i>*Additional information from MCT2D will be provided at a later date. No work on this measure is required until explicitly notified by MCT2D.</i>	
		Requirements Completed	<b>20</b>
		Requirements Not Complete	0
4	10%	<b>Read the MCT2D provided data attribution and overview document and sign in to the MCT2D Patient Data Dashboards at least one time during the performance year.</b> <i>*Additional information from MCT2D will be provided at a later date. No work on this measure is required until explicitly notified by MCT2D.</i>	
		Read Data Overview Document and signed into the dashboard by 12/1/2025	<b>10</b>
		Has not read Data Overview Document signed into the dashboard by 12/1/2025	0
5	15%	<b>Complete a brief survey about billing for CGM interpretation. One per practice.</b> <i>*Additional information from MCT2D will be provided at a later date. No work on this measure is required until explicitly notified by MCT2D.</i>	
		Practice completes this requirement by 7/1/2025	<b>15</b>
		Practice completes this requirement by 8/1/2025	<b>7</b>
		Practice does not complete this requirement by 8/1/2025	0
		Total Points Possible	<b>100</b>

# Participation Measure #3

## Year 2 of MCT2D Participation

Work with your physician organization to choose at least one primary care practice within your PO that is participating in MCT2D. Work together to identify one aspect of care coordination or patient co-management that can be improved, and develop a plan for process improvement, for example, partnering to develop an improved referral/hand off process. Email with instructions was sent out on 02/07/2025.

1. Partner defined: **April 1, 2025**
2. Plan submitted: **June 16, 2025**
3. Feedback: Fall 2025 Endocrinology Clinical Champion Meeting

## Year 3+ of MCT2D Membership

Share progress and final outcomes on 2024 PCP Partnership Project via poster at spring regional meetings. Poster template will be provided and printed on your behalf.

→ Template was sent out on 02/07/2025. **Due March 3, 2025**



# Year 3+ Project Overview and Results



## [Project Title]

[Something short and catchy that describes your QI project]

[Project Contributor Names (alphabetical order)]

Endo Practice  
Logo (optional)

[Endo Practice  
Name]

PCP Practice Logo  
(optional)

[PCP Practice  
Name]

**Problem/Focus of Work:** *What is the problem that you and your partnering primary care practice were trying to solve? Please respond in 1-2 sentences.*

**Importance:** *Why is this problem important to solve? Please respond in 2-3 sentences.*

**Root Causes:** *What are the root causes of this problem? Please provide 2-3 root causes and explain how they contribute.*

1. [Root Cause]  
[Root cause explanation]
2. [Root Cause]  
[Root cause explanation]
3. [Root Cause]  
[Root cause explanation]

**Targets:** *Did you and your partnering primary care practice set any goals/metrics of success? Please describe in 2-3 sentences how you would determine the success of the project.*

**Current Situation:** *After having worked with your primary care practice for the past 9 months, what progress have you made on addressing this issue? What is your role? What is the primary care practice role? Has this changed over time?*

**Successes/Results:** *What successes have you experienced? Please respond in 3-5 sentences. Please include any data that you have available to share.*

*[Please include any data or supporting images here, if you need more room, please put it on the next page and the design team will format it! This can be something fun, like a picture of your team if you do not have data to share]*

**Barriers/Help Needed:** *What barriers have you experienced? How can either MCT2D or your physician organization support you in addressing these barriers? Please respond in 3-5 sentences.*

**Recommendations/Next Steps:** *What additional changes do you plan to make based on what you have learned through this project to date?*



# Endocrinology Performance Measure: Continuing Practices

Continuing Endocrinology practices will have a performance measure in addition to the participation measures that will account for the other 2% of their 5% total possible VBR. **More details on this measure will be announced by MCT2D.**

# Endocrinology Participation Measures: New Practices

80 points of 100 possible points must be earned to continue being eligible for VBR

Measure #	Weight	Measure Description	Points	
1	10%	<b>Identify clinical champion and practice liaison.</b> The clinical champion must be an endocrinologist. The practice liaison should be an administrative contact, such as an office manager.		
		Clinical champion and practice liaison identified by 1/15/2025.	10	
		Clinical champion and practice liaison identified by 2/1/2025.	5	
		Clinical champion and practice liaison identified after 2/1/2025.	0	
2	15%	<b>Complete a brief survey about billing for CGM interpretation.</b> One per practice.		
		Practice completes this requirement by 7/1/2025	15	
		Practice completes this requirement by 8/1/2025	7	
		PO does not complete this requirement by 7/1/2025	0	
3	20%	<b>Participate in onboarding call with MCT2D Endocrinology program directors.</b>		
		Clinical champion participates in call by 3/15/2025	20	
		Clinical champion does not participate in call.	0	
4	20%	<b>Attend MCT2D Spring 2025 regional meeting.</b> Practice clinical champion required to attend in person. If practice clinical champion is unable to attend, another physician may attend in their place.		
		Meeting attended by clinical champion or substitute physician	20	
		Meeting not attended	0	
5	10%	<b>Read the MCT2D provided data attribution and overview document and sign in to the MCT2D Patient Data Dashboards at least one time during the performance year.</b>		
		Read Data Overview Document and signed into the dashboard by 12/1/2025	10	
		Has not read Data Overview Document signed into the dashboard by 12/1/2025	0	
6	25%	<b>Attend Fall 2025 Endocrinology Clinical Champion Meeting.</b>		
		Meeting attended by clinical champion or substitute physician	25	
		Meeting not attended	0	
			Total Points Possible	100

# Nephrology Participation Measures

80 points of 100 possible points must be earned to continue being eligible for VBR

Measure #	Weight	Measure Description	Points
<b>103% VBR Participation Measures</b>			
1	25%	<b>Attend MCT2D Spring 2025 regional meeting.</b> Practice clinical champion required to attend in person. If practice clinical champion is unable to attend, another physician may attend in their place.	
		Meeting attended by clinical champion or substitute physician	<b>25</b>
		Meeting not attended	0
2	25%	<b>Attend Fall 2025 Nephrology Clinical Champion Meeting.</b>	
		Meeting attended by clinical champion or substitute physician	<b>25</b>
		Meeting not attended	<b>0</b>
3	20%	<b>Participate in a discussion on the 2024 PCP Partnership Project.</b> Round table report out at regional meeting.	
		Participated in regional meeting discussion	<b>20</b>
		Did not participate in discussion	0
4	10%	<b>Sign in to the MDC dashboards at least one time during the performance year.</b>	
		Signed into the dashboard by 12/1/2025	10
		Has not signed into the dashboard by 12/1/2025	0
4	20%	<b>Complete an survey regarding urine albumin creatinine testing procedures.</b>	
		Practice completes this requirement by 7/1/2025	<b>20</b>
		Practice completes this requirement by 8/1/2025	<b>10</b>
		Practice does not complete this requirement by 8/1/2025	0
Total Points Possible			100

# Nephrology Performance Measure

Nephrology practices will have a performance measure in addition to the participation measures that will account for the other 2% of their 5% total possible VBR. **More details on this measure will be announced by MCT2D.**

# Presenting at PGIP Quarterly

**BCBSM has asked us to give a short presentation at PGIP quarterly about MCT2D's 2024 successes.**

**In addition to having our team present, they would like to have an MCT2D PO present for approximately 15 minutes on any successes or barriers that they have overcome as a result of their MCT2D participation.**

**Presenting at PGIP quarterly with us will meet your PO Level Learning Community Requirement! Please send Jackie an email if interested.**

# Next Month's PO Call Dates

**Monday, March 10th, 11am-12pm**

**Wednesday, March 12th, 2pm-3pm**