



August PO Monthly Call

*Monday, August 12th at 11am
Wednesday, August 14th at 2pm*



AGENDA

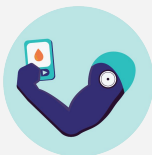
FINAL PCP VBR: NEW + CONTINUING PRACTICES

CONTINUING PO SCORECARDS

OPPORTUNITIES TO GET ENGAGED:

Dashboard 2.0 Focus Groups

Health Equity and SDOH Workgroup





MCT2D

PCP VBR

Measurement Year: 9/1/2024-8/31/2025



VBR

Notification:

9/1/2024

While in the past, we have shared physicians who BCBSM deemed ineligible for VBR prior to the 9/1 start date, BCBSM has asked us to hold off sharing this information.

The primary reason that physicians have been denied eligibility for VBR is not being included in the Fall 2023 PGIP list.

Once the VBR list is disseminated on 9/1, please let us know if you have any concerns or questions and we will share them with BCBSM.



MCT2D

New Practice PCP VBR

Measurement Year: 9/1/2024-8/31/2025

Upcoming Dates for New Practices

~~8/13/24~~ Please have all clinical champion and practice liaisons identified. The earlier the better!

9/3/2024- Welcome email and Practice Change Readiness Assessment distributed to all new practice clinical champions.

9/9/2024- Physician level assessment distributed to new practice clinical champions and PO leads. Please have a dissemination plan in place. *Due 12/13/2024.*

Mid September- Patient needs assessment flyer distributed to new practice clinical champions and PO leads. Please have a dissemination plan in place. *10 responses due by 12/13/2024.*

New Resources

7 Minute Intro to Clinical Champion Role Video-

Included as a link in the PCRA

Currently Available

4 minute Intro to MCT2D Video

Included as a link in the physician level assessment

Coming soon - next 2 weeks



MCT2D

CGM User Experience Program

FYI for Newly Enrolled POs

MCT2D CGM USER EXPERIENCE PROGRAM

- **WHAT:** An educational, off-label CGM device trial for health care providers in the MCT2D network to wear on themselves.
- **WHO:** Open to **physicians, nurse practitioners, physician assistants, and pharmacists** at any MCT2D practice.
- **WHY:** Build clinicians' familiarity with using a CGM and increase understanding of the patient experience.
- **WHEN:** Notifying new practices of the opportunity in early to mid- September.

PLEASE NOTE: It can take up to 2 months for you to receive your CGM. The MCT2D team has to order the CGMs from the manufacturer, package them, and ship them. Due to the nature of this process, shipments are typically completed in batches. Depending on demand, multiple batches may need to be completed to cover all newly participating practices.



MCT2D
Continuing Practice PCP
VBR

Measurement Year: 9/1/2024-8/31/2025



PO Scorecards

ONGOING POS

HEY!

WE NEED YOUR INPUT

PO Scorecard Opportunity Dashboard 2.0 Focus Groups

We are conducting final testing on two exciting updates to our dashboard!

- 1) Redesigned summary measures page
- 2) All new landing page

We want to gather your feedback at regular intervals as we release new pages and features of dashboard 2.0!

We will be hosting 3 Focus groups that will include PO representatives and other members:

- 1) **September/October** - Summary Measures Release
- 2) **December/January** - Patient List & Patient Profile Release
- 3) **March/April** - Prepopulated Reports Release

All new design



Percent of patients < 65 with controlled ($\leq 8.0\%$) vs poorly controlled (>math>8.0\%</math>) HbA1c by Practice

Click on a bar to filter the patient list by that Practice

Name	Total Patients
	14.6
	14.4
	14.0
	13.8
	13.4
	13.2
	13.1
	13.0
	13.0
	12.9
	12.9
	12.7
	12.6
	12.6
	12.5
	12.3
	12.1

A1c Results for Patients < 65

Patient Count: 15.0

Patient Name: 14.6

HEY!

WE NEED YOUR
INPUT

PO Scorecard Opportunity Dashboard 2.0 Focus Groups

Vote for a time for the September/October focus group now!

<https://calendly.com/d/cqgt-9sf-hyv/fall-dashboard-2-0-focus-group>



All new design



The Michigan Collaborative For Type 2 Diabetes
PATIENT DATA DASHBOARD

LAST UPDATED 5/31/2024

Based on Claims and Clinical data from BCBSM, BCBSM MA, BCN, and BCN-A
Claims data (1/1/2018 - 5/31/2024); Clinical data (1/1/2020 - 5/31/2024)

Click the icons below to navigate to a dashboard view.

- Patient List**
Filter a list of your patients included in the MCT2D dashboard
- Patient Profile**
Access diabetes-related health information for a specific patient
- Summary Measures**
View summary measures for your organization
- Follow Up Lists**
Access pre-filtered patient lists and save custom lists
- Pre-populated Reports**
Real-time reports on critical topics
Coming soon!
- User Guide**
Get help navigating the dashboard

WELCOME & FAQs

Welcome to the MCT2D Patient Data Dashboard, a population health dashboard designed to empower you with tools for quality improvement and population health management. With the dashboard, you can filter patients based on specific criteria, access summary data on MCT2D initiatives, and review detailed diabetes-specific patient health information.

Use the icons above to navigate the dashboard, or explore answers to frequently asked questions below.

- What patients are included in the dashboard?
- What data will be added in the future?
- What does "pharmacy coverage" represent in the dashboard?
- What should I do if data is missing?
- How do I export data?
- Who should I contact if I need help with this dashboard?