

# MCT2D PO Monthly Call

9/13 at 2pm  
9/18 at 11am



# Agenda

---

- Specialist Recruitment
- 2024 PCP Recruitment
- Revised Language: Medications Initiative
- Announcement and Reminders



# Specialist Recruitment

MCT2D will be recruiting endocrinology and nephrology practices for a 1/1/2024 start date.

- Recruitment will open on September 15th and will be available in the administrative portal
- A list of your eligible endocrinology and nephrology practices will be displayed, with an option to “Enroll in MCT2D”
- Recruitment will be open from 9/15/2023-11/3/2023

# Recruitment Support

MCT2D will be hosting and recording a session with endocrinologists and nephrologists covering:

- What a CQI is
- What MCT2D is and what our initiatives are
- Requirements for participation
- How participation and value based reimbursement incentives operate

We will be hosting these on the following dates and will send a calendar hold to all POs with eligible nephrology or endocrinology sites.

Endocrinology: October 10th, 5:30pm-6:30pm

Nephrology: September 26th, 5:30pm-6:30pm

Please forward these to any endocrinology or nephrology practices in your PO who may be interested. A recording of the session will be available as well.

Requirement	Responsibility	Due Date
Submit name of clinical champion and practice liaison. Clinical champion must be a nephrologist.	Clinical Champion	1/19/2024
Complete Practice Change Readiness Assessment (due 3/1/2024- estimated 20 minutes to complete)	Practice	3/1/2024
Participate in an onboarding call with the MCT2D nephrology program directors.	Clinical Champion	4/1/2024
Attend the Spring 2024 regional meeting. Attendees: PCP practices, nephrology practices, endocrinology practices.	Clinical Champion	April/May 2024
Attend the Fall 2024 nephrologist clinical champion meeting.	Clinical Champion	October/November 2024
Complete brief self-reflection exercise on the quality initiatives (Coordinating Center will distribute a template)	Each physician	11/30/2024
Respond to requests from the coordinating center and your physician organization related to MCT2D related work in a timely way (either 3 days or as specified)	Practice	Ongoing
Present on your site's implementation of the quality improvement initiatives at a collaborative meeting, regional meeting, or conference call, if requested	Practice	Ongoing

# VBR for New Specialist Practices: Nephrology

Requirement	Responsibility	Due Date
Submit name of clinical champion and practice liaison. Clinical champion must be an endocrinologist	Clinical Champion	1/19/2024
Attend the MCT2D medication and CGM training session (1 hours total, virtual)	Clinical Champion	6/1/2024
Complete Practice Change Readiness Assessment	Clinical Champion	3/1/2024
Attend the in person Spring 2024 regional meeting. Attendees: PCP practices, nephrology practices, endocrinology practices.	Clinical Champion	April/May 2024
Attend the endocrinology clinical champion meeting. Attendees: Endocrinology clinical champions only	Clinical Champion	Fall 2024
Complete reflective learning communication, co-management, and coordination with PCP practices.	Practice	11/30/2024
Respond to requests from the coordinating center and your physician organization related to MCT2D related work in a timely way (either 3 days or as specified)	Practice	Ongoing
Present on your site's implementation of the quality improvement initiatives at a collaborative meeting, regional meeting, or conference call, if requested	Practice	Ongoing

# VBR for New Specialist Practices: Endocrinology

# 2024 PO & PCP Recruitment

MCT2D plans to recruit new physician organizations and new practices in early 2024 for a September 1, 2024 start date.

## Recruitment Timeline

**January 2024:** Informational sessions for new physician organizations

**January 2024:** New “Introduction to MCT2D for Practices” available

**End of January 2024:** Eligible practices shared with new & currently participating POs

**February 2024 - April 30, 2024:** Recruitment open for new primary care practices

**September 1, 2024:** New practices begin earning VBR

**September 2024:** New trainings available and practices begin MCT2D onboarding

# Revised Language: MCT2D Medications Initiative

Moving forward, MCT2D is revising how we refer to the medications initiative to be more representative of the complexity of the patient centered medication prescribing.

We will be referring to the medications initiative as:

*“Aligning medication prescribing with guideline directed care.”*



# Revised Language: MCT2D Medications Initiative

This means interventions that focus on prescribing in accordance with standards of care as defined by the American Diabetes Association such as the deprescribing of insulin and appropriate prescribing of medications such as GLP-1RAs and SGLT2is based on patient comorbidities like chronic kidney disease, heart failure and/or prior history of heart disease.

It also involves ensuring patient-centered treatment selection and substitution of alternative medication if guideline directed treatments are unaffordable or not covered by insurance.

# Reminders and Announcements

# VBR Metrics Focus

## Medications (10)

- Answer Health Physician Organization
- Bronson Network LLC
- Henry Ford
- HVPA
- Jackson Health Network
- Lake Huron PHO
- Medical Network One
- Metro Health Integrated Network
- Northern Michigan Care Partners
- Professional Medical Corporation

## CGM (15)

- Beaumont ACO
- CIPA
- GMP Network
- Great Lakes OSC
- Holland Medical Group
- IHP
- Lakeland Care, Inc
- Michigan Medicine
- MidMichigan Collaborative Care Organization
- MSU Healthcare
- Oakland Physician Network Services
- Olympia Medical, LLC
- Reliance PO
- St. Mary's PHO
- United Physicians

## Low Carb Diet (3)

- LPO, LLC
- Oakland Southfield Physicians
- Primary Care Partners, Inc

# VBR Focus

## *Meeting with Clinical Champions*

The first step for the POs who chose the medications or CGM VBR focus is to meet with practice clinical champions to set a target rate and develop a process improvement plan.

- This meeting should happen between September 28th and November 15th.

By November 15th, each PO will answer the questions on the next slide in the MCT2D Admin Portal.

**Low Carb Diet POs:** We sent out an invite last week to meet with our team to discuss patient reported outcomes and your resource/support needs.

# VBR Focus- CGMs and Medication

## *Goal Submission: November 15*

### **Medications**

“What is your goal for medication prescribing? Please describe in detail - e.g. “We aim to increase prescribing of SGLT2is from 8% to 12% for patients with type 2 diabetes who have impaired kidney function”.

How did you determine the target population for improvement?

### **CGMs**

“What is your target rate for increasing CGM prescribing? Please describe in detail - e.g. We aim to increase CGMs prescribing rate from 4% to 8% for patients with a BMI over 30 who are starting a new diet plan.

How did you determine the target population for improvement?

# VBR Focus- CGMs and Medication

## *Goal Submission: November 15*

If you need support in setting a target rate or defining your metric, please reach out to the coordinating center. We would be happy to have a 1 on 1 meeting with you to support you in setting a goal.

# Dashboard Data Update and Enhancement: October 10th

Data in the dashboard will be updated **through 6/30/2023**.

Dates of last A1C and BMI will be added to the patient list in the patient identification tool, and in the patient list download.

Nephrologist attribution will be incorporated into the dashboard, meaning that your participating nephrology practices will be listed as practices you can select in the drop down menu.

- If you would like to give your nephrology clinical champions access to the dashboards in light of this update, please reach out to Jake Reiss at [jereiss@med.umich.edu](mailto:jereiss@med.umich.edu)

# Quarterly PO Reports

Thank you to all the POs who gave their input on the PO reports! We will be incorporating the following changes to the October reports based on your feedback:

- Practice level reporting (June 2022-June 2023 for upcoming report) on:
  - SGLT2 inhibitors and GLP-1 RA prescribing
  - CGM prescribing
  - Insulin prescribing
  - Sulfonylurea prescribing
- PO rank (June 2022- June 2023):
  - Medication prescribing
  - CGM Prescribing
  - A1C
  - BMI
  - PO rank for insulin prescribing
- Trending data (2018-2023) at a PO level on:
  - Medication prescribing
  - CGM prescribing
  - Insulin prescribing
  - Sulfonylurea prescribing

The next reports will be available in October, following the October 10th data update and enhancement.



# Spring Regional Meetings

## Spring Regional Meeting Dates:

- Tuesday, 4/9/2024 – Livonia
- Thursday, 4/11/2024 – Ann Arbor
- Tuesday, 4/16/2024 – Troy
- Tuesday, 4/23/2024 – Kalamazoo
- Wednesday, 4/24/2024 – Grand Rapids
- Wednesday, 5/8/2024 – Bay City
- Thursday, 5/9/2024 – Traverse City

Holds have been sent out for all of the venues that we have a contract signed with. Traverse City is the only meeting that we have not yet sent out a hold for, and will be sending one soon.

We are continuing to try to schedule these out as far in advance as possible to give you and your clinics as much notice as possible.

# Next MCT2D Learning Community Event

Monday, September 25th, 12pm-1pm

“Addressing Patient Motivation”

- Dr. Jonathan Gabison

Please feel free to email us with any specific examples of where you or your practices struggle with patient motivation and Dr. Gabison will address them in his presentation.



# New PO Scorecard and VBR Metrics

As of September 1st, new PCP VBR metrics and PO scorecards are available in the administrative portal.

The following events have been retroactively applied to count for credit:

- **Physician Level Learning Community Events**
  - Attendance at the June “Implementing MCT2D Initiatives” Panel Discussion
  - Attendance at the July “Metabolic Surgery for T2D” LC Event
  - Attendance at the August “Multidisciplinary Teams and Specialists” Panel Discussion
- **Practice Level**
  - Data Dashboard or Jumpstart Interviews
  - Dot Phrase Library Submissions
- **PO Level**
  - Participation on the two learning community panel discussions listed above
  - Participating on the CGM panel at the collaborative wide meeting

# PO Monthly Digest + Upcoming Checklist

Starting this month, we will be creating a monthly digest with all of the MCT2D information that you need to know and distributing it on the first of the month. The first edition can be found at [this link](#).

We are working on a PO checklist that will be available later in the year as well!



# Regional Meeting Registrations

As part of the PO scorecard this year, you are asked to ensure that your clinical champions are registered for the regional meetings, at least two weeks prior to the individual meeting date.

On your MCT2D Admin Portal, on your home page, you can click to see who is not yet registered.

**Please follow up with your clinical champions who have not yet registered! The link to register [is here](#).**

There are 8 practices, listed below, not yet registered for the regional meeting. Click [here](#) to view practices who are already registered.

[Click to open your email client and send an email to all practices not yet registered for the regional meeting](#)

[Click here](#) to copy this email list to your clipboard.

# PO Scorecard: BMI Submission

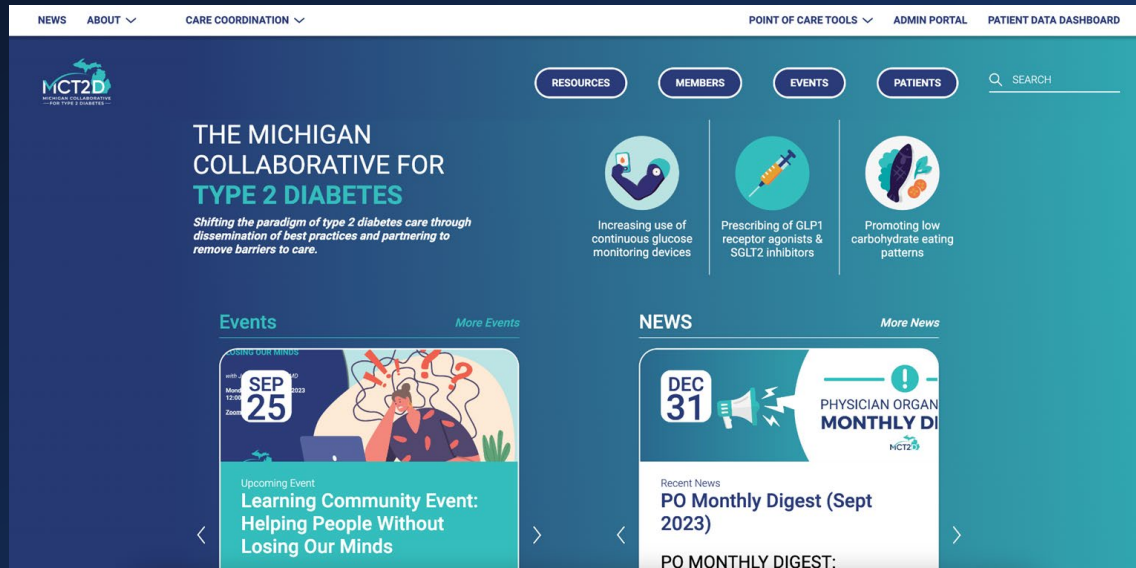
Some of you noted on the BMI/A1C Submission Survey that BMI is no longer a supported field for submission. We spoke with BCBSM:

- You are still able to submit BMI as part of the PPQC data. The field was not removed, even though it is no longer incentivized by HEDIS. This is the preferred way for you to submit the data.
- You can also submit the BMI data through the supplemental EMR data. The field is not listed, but BCBSM has assured us it can still be sent, and it will be added back as a field in May 2024.

**Please continue to submit this critical data for your participating practices. 5% of the PO scorecard is tied to increasing your BMI submission rates.**

# Coming Soon: A Refreshed Look and Feel to our Website!

At the upcoming regional meetings, we will debut our new website and show you and the clinical champions how to navigate some exciting new features!





NEWS ABOUT CARE COORDINATION POINT OF CARE TOOLS ADMIN PORTAL PATIENT DATA DASHBOARD

MCT2D

RESOURCES MEMBERS EVENTS PATIENTS SEARCH

## RESOURCE LIBRARY

SEARCH MY BOOKMARKS

Current filters CLEAR SEARCH

FILTER BY TAGS SORT BY: Select an option

- For Providers
- For Patients
- Nephrology
- VBR Learning
- Research
- Handout
- Created by MCT2D
- Point-of-care
- Coverage Guides
- Video
- Web Tool
- COLLECTIONS

1 2 3 4 5 6 7 8

**GLP-1 Receptor Agonist Shortages: How to Support Patients**

BOOKMARKED

**Medications and CGM Coverage Guide**

BOOKMARKED

**Adjusting Diabetes Medications on a Low Carb Lifestyle: An MCT2D Guide**

BOOKMARKED

**Anti-Obesity Medication Coverage by Payer in Michigan 2023 Quick Reference Guide**

ADD BOOKMARK

## Updated Resource Library

NEWS ABOUT CARE COORDINATION POINT OF CARE TOOLS ADMIN PORTAL PATIENT DATA DASHBOARD

MCT2D

RESOURCES MEMBERS EVENTS PATIENTS SEARCH

## Health Equity

We know that Social Determinants of Health play a big role in treating type 2 diabetes. We want to make finding additional resources and support as easy as possible for our practices and patients.

### Find Community Resources

Easily search the Find+Help database of thousands of community resources including diabetes programs, food support, transportation, and more.

Enter a keyword and your zip code and click "search"

Keyword or program name

Enter your zip code

SEARCH

Powered by Find+Help

## New Information + Support

MCT2D

RESOURCES MEMBERS PATIENTS QUALITY INITIATIVES SEARCH

## MEMBER DASHBOARD

Find important items for members including events, tools, forms, and more. You can customize your dashboard view in your browser by selecting an option below.

Set your custom view (all fields are optional):

Role: Select an option (PO, Clinical Champion) Year Joined: Select an option (2021, 2023) SAVE

PARTICIPATION REQUIREMENTS

### MCT2D VBR REQUIREMENTS

PHYSICIAN PCP 2021

Participate in one physician level learning community activity between 9/1/2023 - 6/1/2024. Choose one of the options listed below. This list is updated as new opportunities become available.

Complete an MCT2D Participation Requirement

**Submit feedback on a Learning Community resource**

Did you pilot a learning community resource? Complete this short feedback survey to complete your VBR requirement.

SUBMIT FEEDBACK

Complete an MCT2D Participation Requirement

**Watch a recorded learning webinar**

Click below to explore our available recorded webinars. Follow to prompts to complete the short post-survey after watching.

WEBINARS

Complete an MCT2D Participation Requirement

**Submit feedback on a Learning Community resource**

Did you pilot a learning community resource? Complete this short feedback survey to complete your VBR requirement.

SUBMIT FEEDBACK

Complete an MCT2D Participation Requirement

**Watch a recorded learning webinar**

Click below to explore our available recorded webinars. Follow to prompts to complete the short post-survey after watching.

WEBINARS

The table displays your VBR requirements based on your selections above. It does not reflect whether or not you have already completed these requirements.

To see your exact requirements and what you have already completed, login into the Admin Portal.

LOGIN

## Member Dashboard

# October PO Workgroup Meetings: *Admin Portal Walkthrough*

Monday, October 9th at 11am

OR

Wednesday, October 11th, at 2pm

*Both led by Ryan, MCT2D Senior Web Developer*