



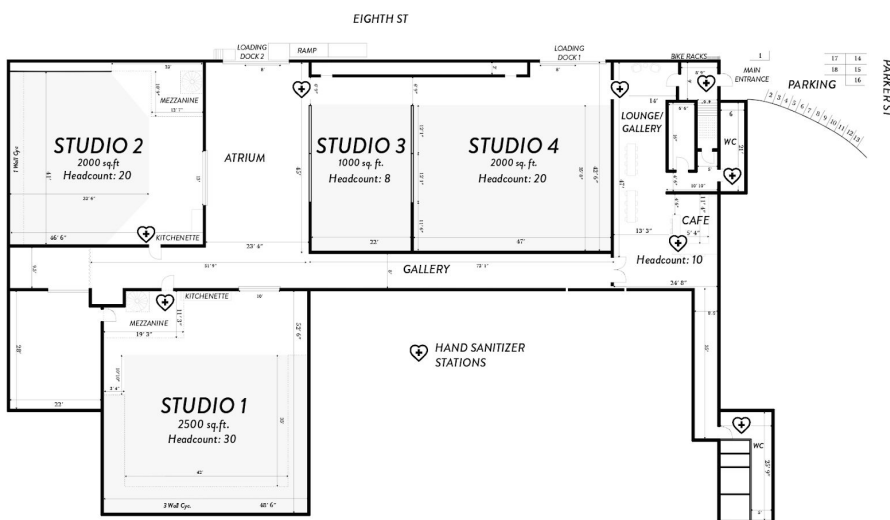
Ciel Covid-19 Updates

Health is our top priority. With our updated COVID-response, we ensure to keep our space sanitized and safe.

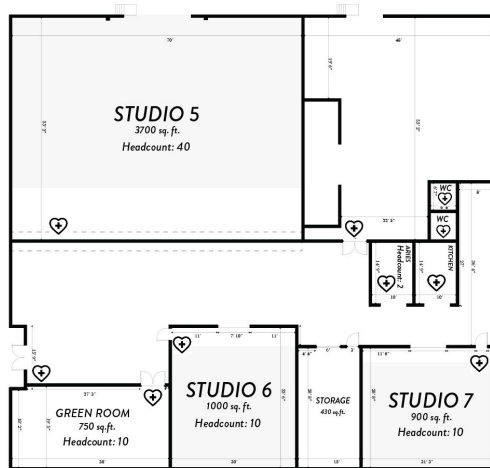
- Our staff will wear certified masks and gloves. They will also be trained on CDC, state and local health guidelines.
- Sanitizer is located at the entrances of all common areas and studios.
- Our common areas will be sterilized using disinfectants and UV light wands. Exterior high contact areas, such as handles, keys and lock boxes, will also be sanitized regularly.
- With the help of our partners, equipment will also be cleaned and disinfected upon return. UV lights will be used on close contact equipment, such as radios, headsets, and craft service items.
- We have sanitation kits available onsite.

Recommended social distancing headcount per studio:

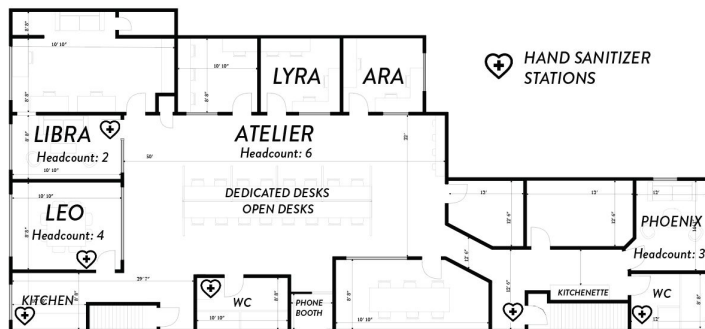
2611 STUDIOS



2603 STUDIOS



ATELIER



FOR PRODUCTIONS AND EVENTS:

Health & Safety guidelines

- Your team should prioritize what roles are required on set (client, creative, crew)
- Determine what roles can be supported via remote streaming
- PPE is required for all visitors to Ciel Creative Space
- Front access door to Ciel is unlocked remotely by Ciel staff
- Private loading dock access for product/props
- Social distance of 6 feet maintained while on-site

EQ rentals

- Advance orders are delivered & staged in your studio(s) before shoot.
- EQ partners use PPE & sanitize gear
- Production EQ & G&E rental link:
 - [Ciel EQ](#)

FAQs:

- What are your social distancing guidelines?
 - See our floor plan for recommended crew sizes and headcounts per space
- How often do you clean/sanitize?
 - We will clean and sanitize every evening. Sanitation kits are also available for sale.
- How strong is your wifi?
 - We have dedicated wifi signals for each studio, as well as dedicated wifi for our coworking space. Studios are hard lined. On average, download is 120-250 mgbps and upload is 220-280 mgbps.
- Do I have to sign the release form and assessment?
 - As part of our new health and safety procedures, everyone on our premise is required to do the COVID-19 [self-checker assessment](#) and sign our [COVID-19 Release Form](#).

REFERENCES:

[Berkeley Health Dept](#)

[Alameda County Health Ordinance](#)

[California Health Ordinance](#)