

nScan – High-Performance AI Scanner

for optical quality control of web- and flatware

Highlights



Surface Quality Inspection

Process reliable detection of surface defects



High-Performance Hardware

Real time detection at high production speeds



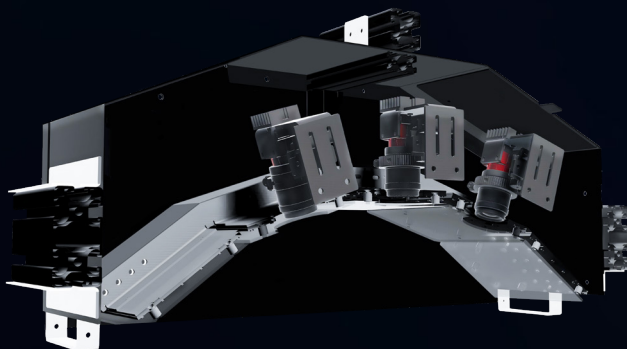
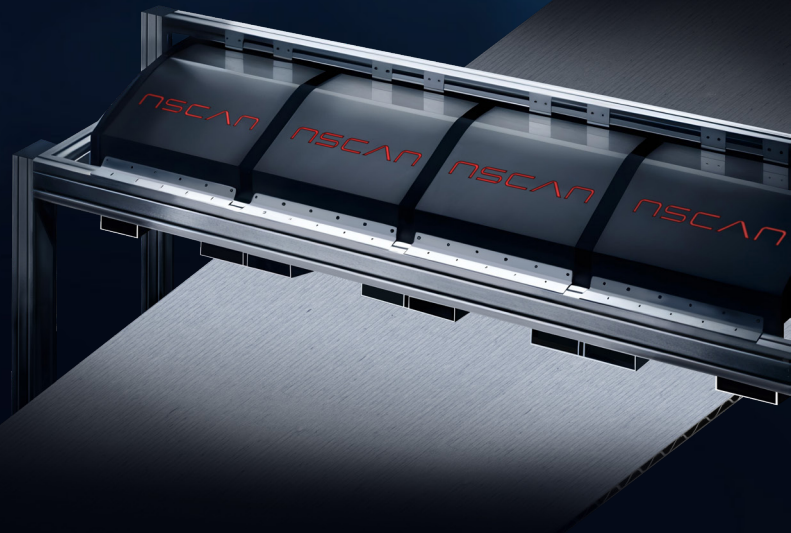
Cutting-Edge AI Software

No cloud connection required for fast and secure data processing



User Friendly – Teach and Go

Few minutes to teach-in the product features by using a master sample

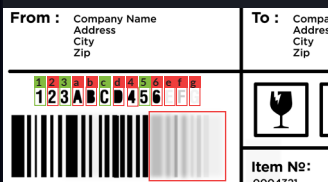


Anomaly Detection



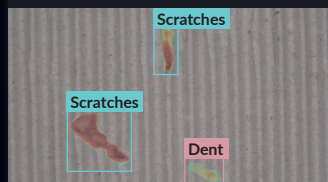
Detection of complex defect types: cracks, holes, contaminations, adhesions, residues, cuts, deformations etc.

OCR | Font



Markings, codes, letterings or serial numbers

Classification



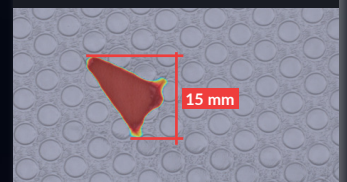
Classification of occurring defects

Color Detection



Monochrome, multicolor or color gradients

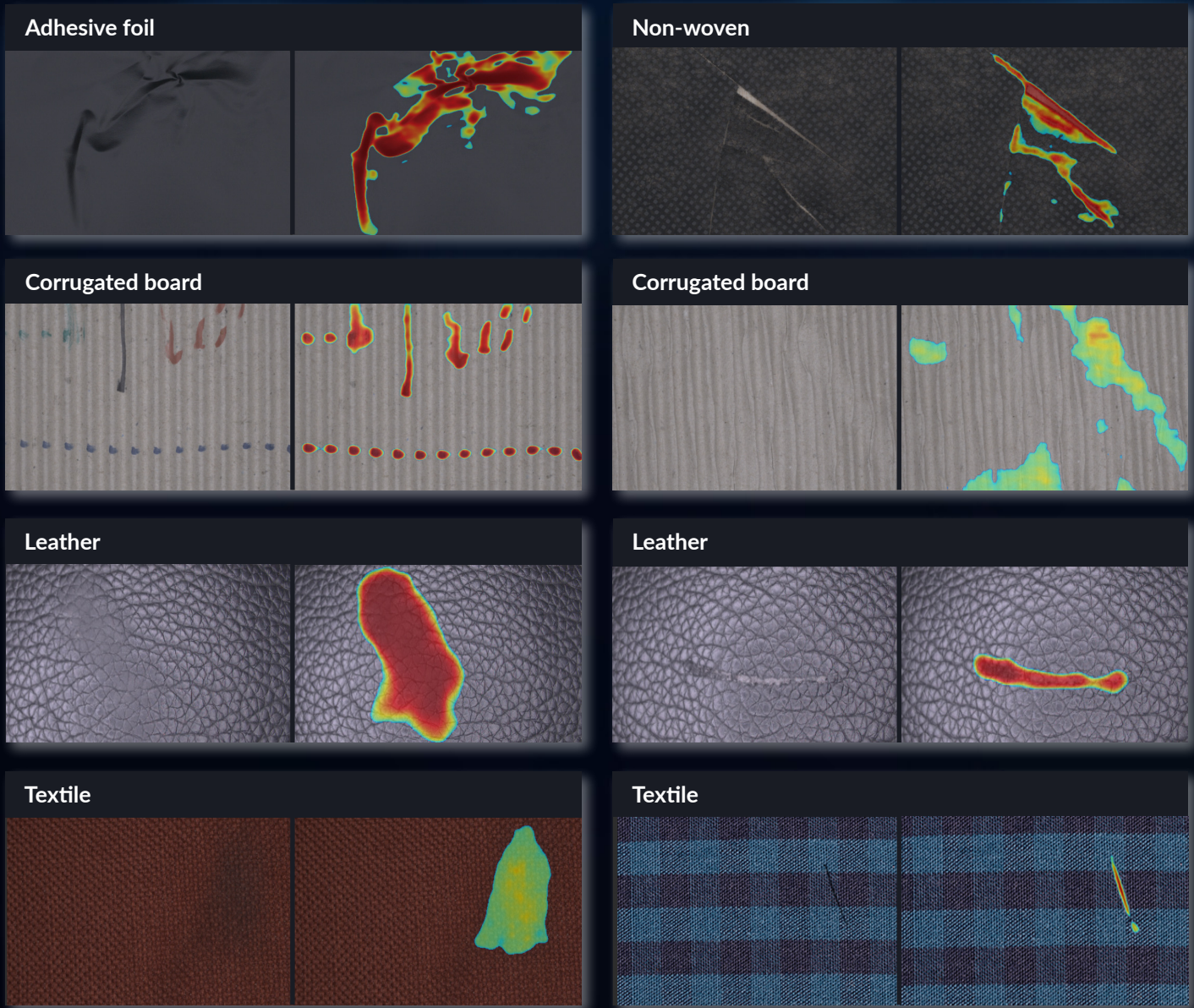
Mask | Size











Position & dimension detection

The Right Solution for Any Application

versatile and suitable for all kinds of surfaces



Key Features

- | | | | |
|--|---|---|---|
|  All-in-one Device
Single source soft- & hardware, simple & seamless integration, even in existing system concepts |  Modular Design
Modular scanning setup, inspection of surface on both sides possible |  Optimal Lighting
Structured light for perfect illumination of the product surface |  100% Coverage
Seamless check of product surface during running production |
|  Low Maintenance
Minimal cleaning and maintenance effort |  Ready for Use 24/7
Consistently operational system |  Seamless Connectivity
Profibus, Profinet, OPC UA |  Made in Germany
Engineered and manufactured in Munich |