

# nLine – AI-Supported Quality Control

for extruded and other cylindrical products

## Highlights



### Surface Quality Inspection

360° analysis of potential quality defects on the entire surface



### High-Performance Hardware

Real time detection at high production speeds



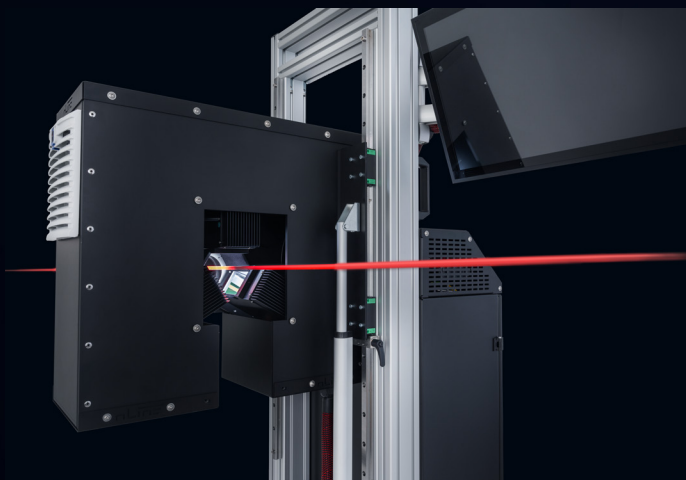
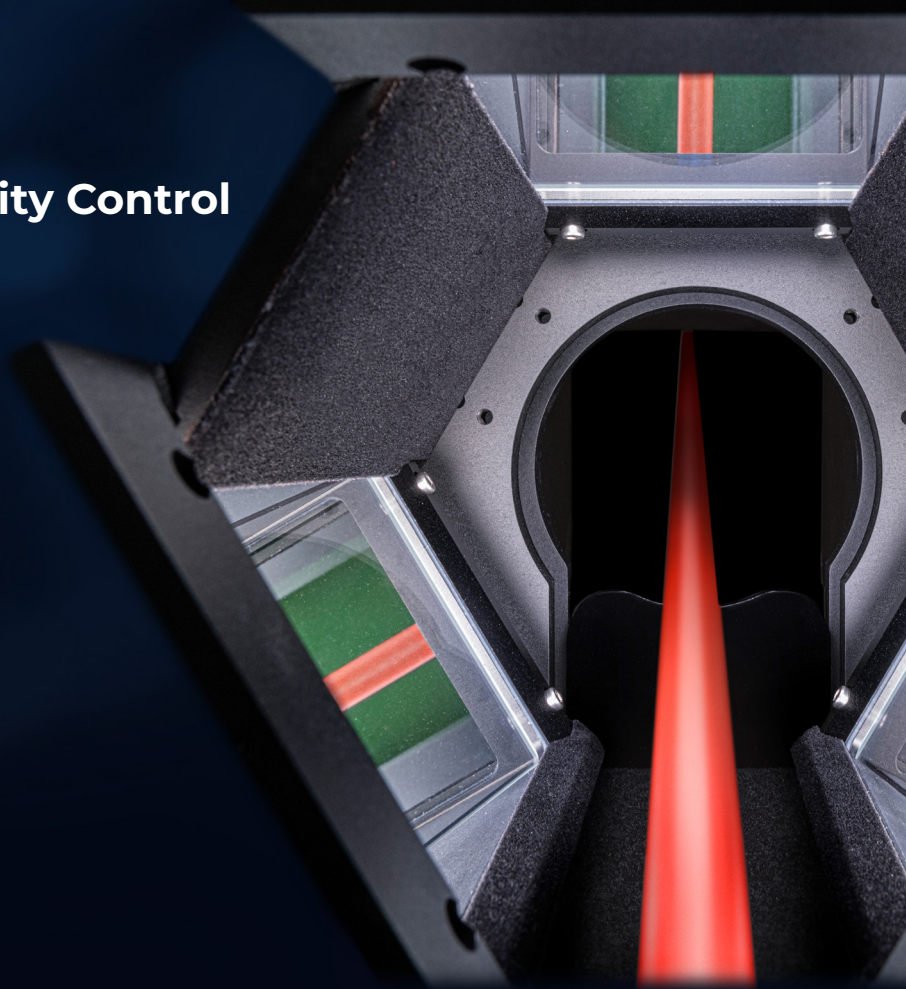
### Cutting-Edge AI Software

No cloud connection required;  
fast and secure data processing

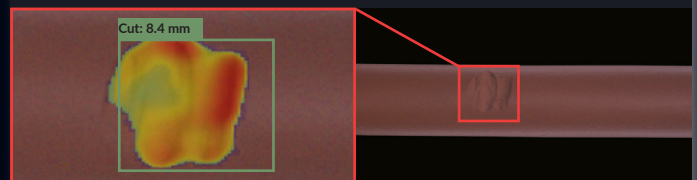


### User Friendly – Teach and Go

Teach the system in minutes with master samples

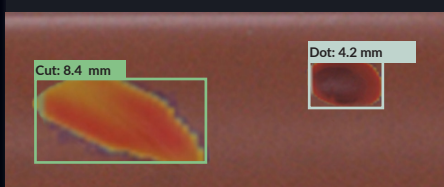


## Anomaly Detection



Detect complex defects:  
Breaks, cracks, cuts, holes, dents, pimples, deformations, inclusions, pits, etc.

## Classification



Classify defects by type

## OCR | Font



Marking, codes, lettering, serial numbers

## Color Detection



Ensure color consistency

## Contact




nLine GmbH  
Muenchener Str. 14 | 85540 Haar (Munich), Germany  
Phone: +49 89 21 2000 | E-Mail: [info@nline.ai](mailto:info@nline.ai) | Web: [www.nline.ai](http://www.nline.ai)

## Contact US

nLine USA Office | Warehouse & Service  
1201 Wesemann Dr. | West Dundee | IL 60118  
Phone: +1 224 449 2546 | E-Mail: [info-US@nline.ai](mailto:info-US@nline.ai)









# The Right Solution for Any Application

versatile and suitable for all kinds of surfaces

 <b>nLine S</b> Product diameter: 0.020 – 0.079 in 0,5 – 2,0 mm Product speed: 984 ft/min. 300 m/min.	 <b>nLine M</b> Product diameter: 0.079 – 1.18 in 2,0 – 30 mm Product speed: 1,640 ft/min. 500 m/min.	 <b>nLine L</b> Product diameter: 1.18 – 6.50 in 30 – 165 mm Product speed: 328 ft/min. 100 m/min.
--	--	---



## Key Features

- 
**All-in-one Device**  
 Software and hardware from a single source; seamless integration into existing quality control processes
- 
**Non-Contact Measurement**  
 No damage or impact to the product
- 
**Ready for Use 24/7**  
 Consistently operating system
- 
**100% Coverage**  
 Seamless check of product surface during production runs
- 
**Low Maintenance**  
 Minimal cleaning and maintenance required
- 
**Controllability**  
 Via built-in touchscreen, network integration or industrial interface
- 
**IO/Interfaces**  
 PROFIBUS, PROFINET, OPC UA
- 
**Made in Germany**  
 Engineered and manufactured in Munich

### Contact

nLine GmbH  
 Muenchener Str. 14 | 85540 Haar (Munich), Germany  
 Phone: +49 89 21 2000 | E-Mail: info@nline.ai | Web: www.nline.ai

### Contact US

nLine USA Office | Warehouse & Service  
 1201 Wesemann Dr. | West Dundee | IL 60118  
 Phone: +1 224 449 2546 | E-Mail: info-US@nline.ai