

# Global Sustainable Enterprise System <sup>(GSES)</sup>

**The Holistic Standard for social and environmental performance for the public and private sector**

One-stop Sustainability platform for investors, buyers, retailers, consumers and suppliers for a better future!

77 SECTOR-SPECIFIC ACCOUNTING STANDARDS  
17 GLOBAL GOALS  
9 GENERIC STANDARDS  
1 AUDIT  
1 SYSTEM



**ABN-AMRO**

# Global Sustainable Enterprise System

The Global Sustainable Enterprise System (GSES) is an overarching, scalable, and leading online sustainability platform based on the underlying international standard; the Global Sustainable Enterprise Standard; the global holistic rating standard for social and environmentally friendly organizations and products.

The GSES is a comprehensive, Software-as-a-Service ("SaaS") platform that offers various services, including product lifecycle management, supply chain management, supply chain risk monitoring, data validation, and certification of organizations, processes & products. With the GSES, every company can participate regardless of size, country, or sector.

With the GSES System, every company can participate regardless of size, country, or sector.



**Organisations**  
+70,000



**Sectors**  
+77



**Countries**  
+110



**Unifying Goals**  
17

## Industries

- |             |              |                |             |
|-------------|--------------|----------------|-------------|
| Accountancy | Cleaning     | Engineering    | Law Firm    |
| Aerospace   | Construction | Entertainment  | Lease       |
| Automotive  | Consultancy  | Exhibition     | Manufacture |
| Agri        | Products     | Financial      | Offshore    |
| Aviation    | Dentist      | Food           | Packaging   |
| Bankings    | Education    | Graphic        | Safety      |
| Buildings   | Electronics  | Healthcare     | Sports      |
| Catering    | Employment   | Infrastructure | Trading     |
| Government  | Energy       | IT             | Tourism     |

## The GSES System – Standards 2 main levels – 1 worldwide platform

The Global Sustainable Enterprise System (GSES ) consists of two main levels and underlying standards:

- Global Sustainable Enterprise Standard (processes/organization level)
- Sustainable Footprint Standard (products/projects)

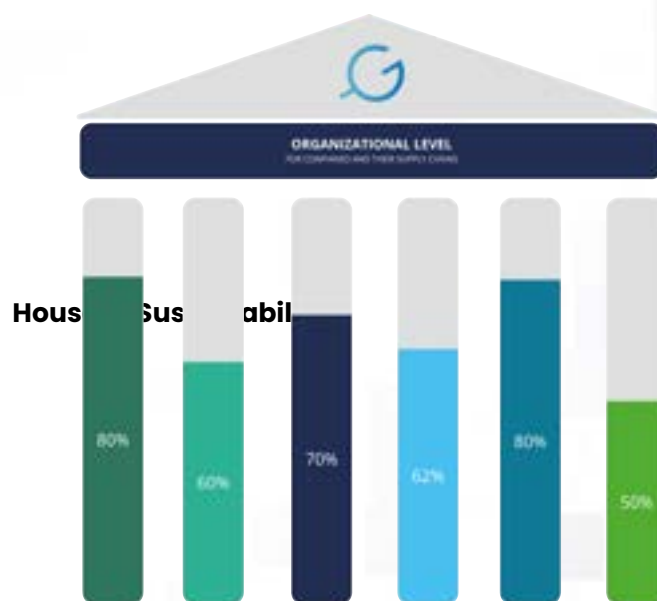
The standards are open source and managed by a diverse group of (international) experts, and stakeholders from diverse industries led by the National Sustainability Institute of the Netherlands. GSES is the gold standard for sustainable, social, and holistic performance of organizations, supply chain & products.

### GSES system is applicable for:

- Corporates
- SME Companies
- Micro Companies
- Provinces
- Ministeries
- Investment & Pension funds
- Public Organizations
- Water Authorities
- Municipalities
- Payment providers
- Retailers

### Used by:

- Buyers
- Marketeers
- Designers
- CSR Managers
- QHSE
- Procurement Consultants
- CFO's
- Contract Managers
- CEO's & Board



- Corporate Social Responsibility (CSR) – based on ISO 26000
- Sustainable Procurement – based on ISO 20400
- Circular Economy CO2 emissions – based on ISO 50001 & ISO 14064-1
- Carbon Footprint (CF) – based on BS 8001
- Health & Safety – based on ISO 45001
- Biodiversity.

# The Global Sustainable Enterprise Standard® – Organization level







The Global Sustainable Enterprise Standard (GSE Standard) measures organizations on many facets of sustainability at the organization level. The Standard is based on GRI and ISO High-Level Structure and is compliant with UN Global Compact, OECD Guidelines, and Responsible Business Alliance. The GSE Standard is suitable for SMEs & Corporates, **and the private sector**.

The GSE Standard measures the following levels and pillars:

## 2 levels of measurement:

Organisatie level

Supply chain level

-  6 pillars of sustainability
-  Corporate Social Responsibility (CSR) – based op ISO 26000
-  Sustainable Procurement – based op 20400
-  Circular Economy CO2 emissions – based op 50001 & ISO 14064-1 (CE) – based op BS 8001
-  Health & Safety – based op ISO 45001
-  Biodiversity

The translation of the 17 Sustainable Development Goals (Sustainable Development Goals) of the United Nations are also included in the GSE Standard. By integrating this into the overall GSES System, we provide organizations with tools that help them support the SDGs.



Data for Good SDG dashboarding and project management is integrated in GSES so the SDG performance of your organization and suppliers can be monitored and verified through the platform

## SUSTAINABLE META STANDARD

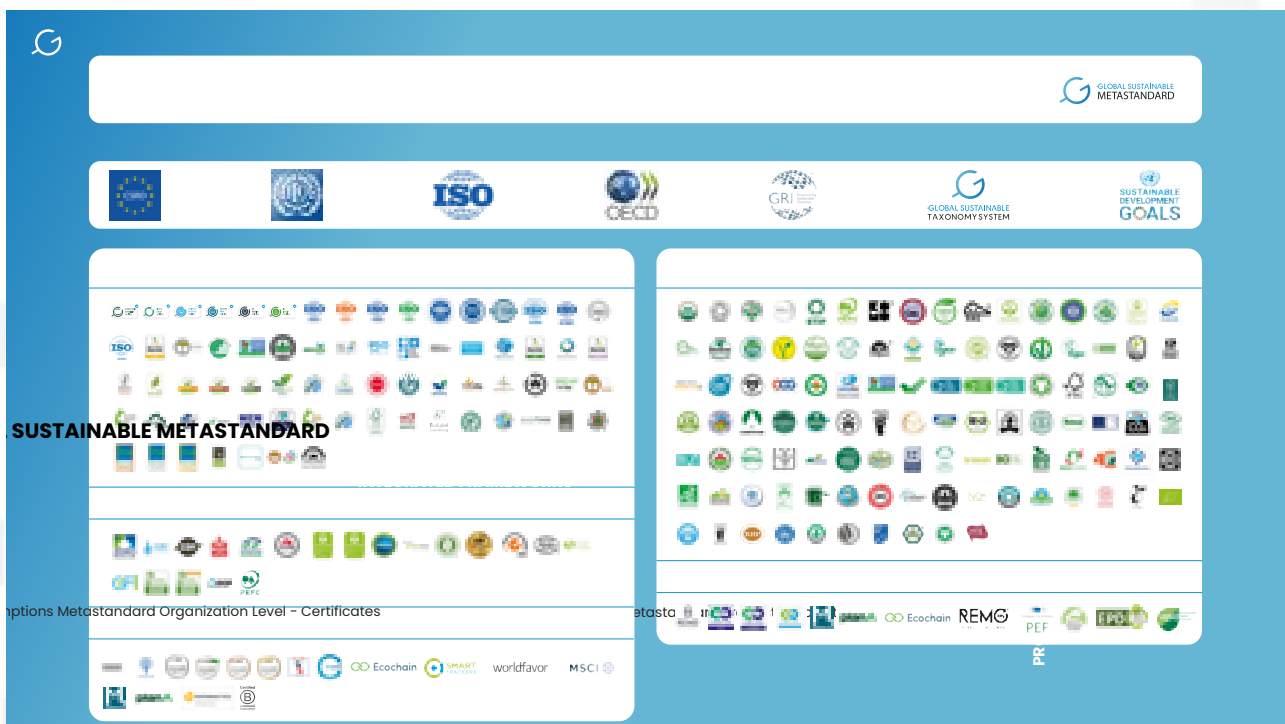
The GSES is an overarching system that works with a **Sustainable Meta Standard** as an exemption matrix **that includes more and more certificates that are related to sustainability**. Upload your certifications to the platform and receive your ESG rating within 48 hours.

## CLAIM YOUR RESULTS

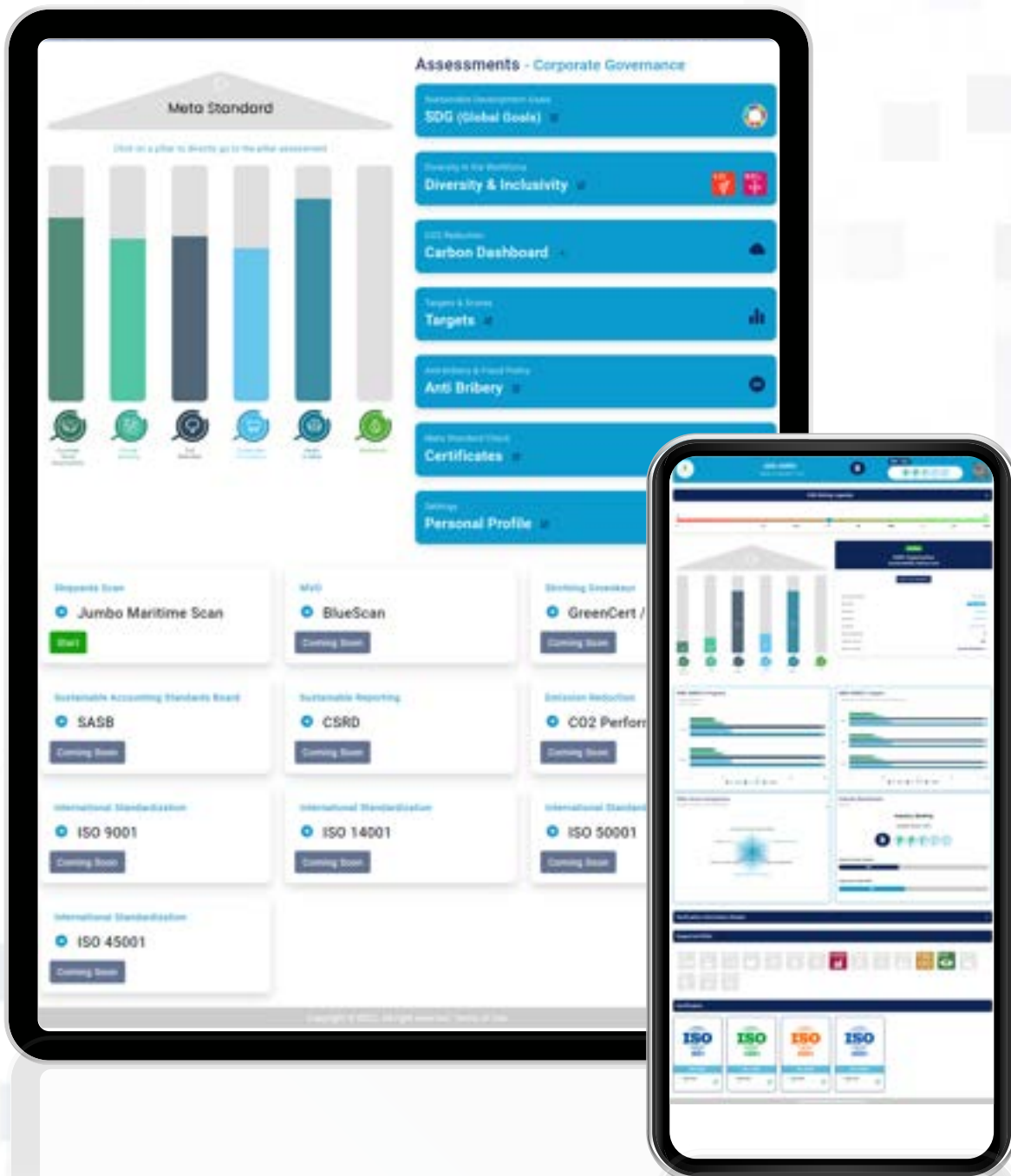
The GSES is an overarching **standard** that works in reverse. This means that the GSES rewards participants for certifications they have already obtained. The GSES uses 1st and 2nd line exemptions. First-line exemptions result from certificates that have been audited and issued by an independent certification body, supervised by an Accreditation Council in its home country.

2nd line exemptions need to be checked by presenting extra data and audit reports because independent certification institutions do not audit them.

## The Sustainable Meta Standard rates certificates & ecolabels – a few examples



# The Rating Card - Organization



## GSES Sustainable Footprint Standard® – product/project level

Enables quantitative sustainable & circular procurement

In an extension of the GSE Standard on an organizational level, we developed a three-stage generic product certification process that measures products/projects, building & raw materials solution for the generic measurement of products/projects, buildings & raw materials.

The Sustainable Footprint Standard measures on 3 pillars:

**Circular Footprint**  
**Environmental Footprint**  
**Health Footprint**



### **Health Footprint®**

The Health Footprint (HF) will focus on the product and not on processes. The rates of the potential harm to health of used substances, during the usage phase of a product.

The focus is on substances that are LEED compliant and BREEAM toxic compliant. This should be included in the Bill of Material of products. These are, on the one hand, toxic substances that are in the product and on the other hand, substances that are NOT in the product.

There is also a connection with the European REACH list (prohibited substances). In addition, the ambition is to record whether substances of the list of Substances of Very High Concern (SVHC, European list, Dutch version) and CMR substances (carcinogenic, mutagenic, or toxic for reproduction) are present or not.

#### **The Health Footprint takes into account:**

- Toxic substances (LEED, REACH),
- GMO,
- Pesticides,
- Bill of Material substance list, and in research:
- CMR (carcinogenic, mutagenic, or toxic for reproduction) substances,
- Substances of Very High Concern (SVHCs)

### **Environmental Footprint®**

The following aspects are taken into account in a qualitative analysis:

The following aspects are additional EF indicators and/or are taken into account at an organizational level by means of the GSES CE pillar or as an informative statement:

- Use of scarce materials.
- Product lifespan.
- Circular business strategy is subject at the organizational level through the CE pillar of the GSES
- Improvement strategy

Certification of the EF score comes with the obligation to obtain the EF certification within two years. This will give an even more complete picture of the sustainability performance. In addition to the EF certification, there is also the obligation to ensure company-wide circularity (CE pillar) within two years.

### **Environmental Impact**

If the impact of energy and other environmental emissions is also to be considered, then the EF must be determined. This EF method is based on life cycle assessment (LCA). The EF is based on the:

- ISO 14040/44
- ISO 14025
- European PEF

### **Circular Footprint®**

The Circular Footprint (CF) is part of the product certification standard of the GSES– Sustainable Footprint Standard. Next to the Circular Footprint, the Sustainable Footprint Standard consists of the Environmental Footprint (EF) and the Health Footprint (HF). The three topics (CF, EF, and HF) give a comprehensive picture of the sustainability performance of a product, the production process, and the supply chain.

The CF focuses entirely on the use of materials in a product and its circular performance. The calculation method is based on both material usage (input side) and post-use processing (output side). The calculation in weight does not take into account the specific flow of material. The circular performance of the input and output side results in a circularity score.

With the CF, the Sustainable Footprint Standard of GSES allows for a pragmatic start for calculating and certifying a circularity score for products. Hence, it fills a gap because there is no standard/ calculation method for the circularity of products yet. The CF method is very accessible, in principle anyone would be able to use the Excel model of the calculation method provided by GSES or the online calculation tool on the GSES platform (BoM calculator) to calculate the CF score. That is because only the flows of materials are included.

### **Circular Footprint Standard – CF is based on existing standards:**

- MCI index of the Ellen MacArthur Foundation
- Cradle to Cradle standard
- Platform Circulair Bouwen (CB) '23 standard (Circular Construction '23 standard)
- Meetmethodek losmaakbaarheid (method for calculating separation index), Dutch Green
- Building Counsel (DGBC), nov 2019



**The following aspects are taken into account in a quantitative analysis:**

- Input side: use of recycled, biological and reclaimed materials.
- Output side: effective recycling/reclaiming and the possibility of composting biological material.
- Separation index: the ability to separate parts or materials after use to make refurbishment, re-use or material mono-streams possible

**The following aspects are taken into account in a qualitative analysis:**

The following aspects are additional CF-indicators and/or are taken into account at an organizational level by means of the GSES CE pillar or as an informative statement:

**Use of scarce materials.**

- Product lifespan.
- Circular business strategy is subject at the organizational level through the CE pillar of the GSES
- Improvement strategy

Certification of the CF score comes with the obligation to obtain the EF certification within 2 years. This will give an even more complete picture of the sustainability performance. In addition to the EF certification, there is also the obligation to ensure company-wide circularity (CE pillar) within 2 years.

Circular Economy on an organizational level (CE pillar based on BS 8001)

In order to do so, the company must certify circularity management within the GSES by means of the Circular Economy pillar at an organizational level, which is based on BS 8001.

The CE pillar at organizational level includes circular business models, raw material procurement, supply chain transparency with regard to CE. For this pillar, see the GSES handbook (Global Sustainable Enterprise Standard 2.2).

**OPEN SOURCE and continuous improvement**

The CF is in a standardization phase. It is linked to international developments in the field of measuring circularity and input from all industries and sectors so that the latest insights and findings are taken into account.

# The Rating Card - Projects & Products



## Supplier level – Procurement Tools within the GSES

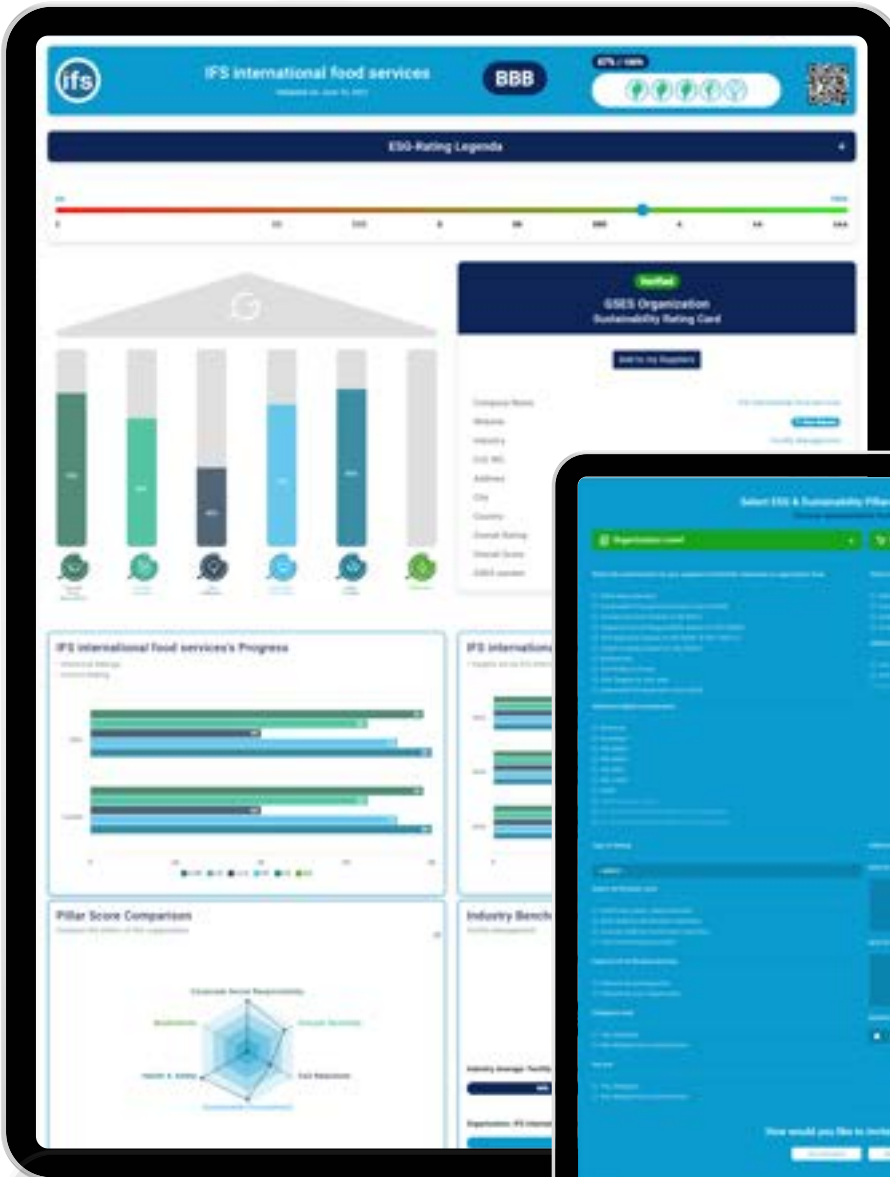
The GSES platform can be used as a procurement tool. The Supplier functionality on the online GSES platform gives every participant the opportunity to invite and rank suppliers on standardized and internationally accepted sustainability themes as CSR, Sustainable Procurement, CO2, Circular-Economy, Health, Safety and Biodiversity. After the suppliers publish the scores of the theme of your choice after a validation, a supplier ranking will appear on your procurement dashboard. Compare suppliers, manage your categories, budget, and spent. And invite suppliers for tenders, RFP's and assessment rounds.

The GSES helps to give the insights you need to make better informed and data-driven decisions, to find the right suppliers and enjoy increased levels of visibility and control over your entire supply chain. In our online communities, suppliers become more visible to buyers through the GSES database.

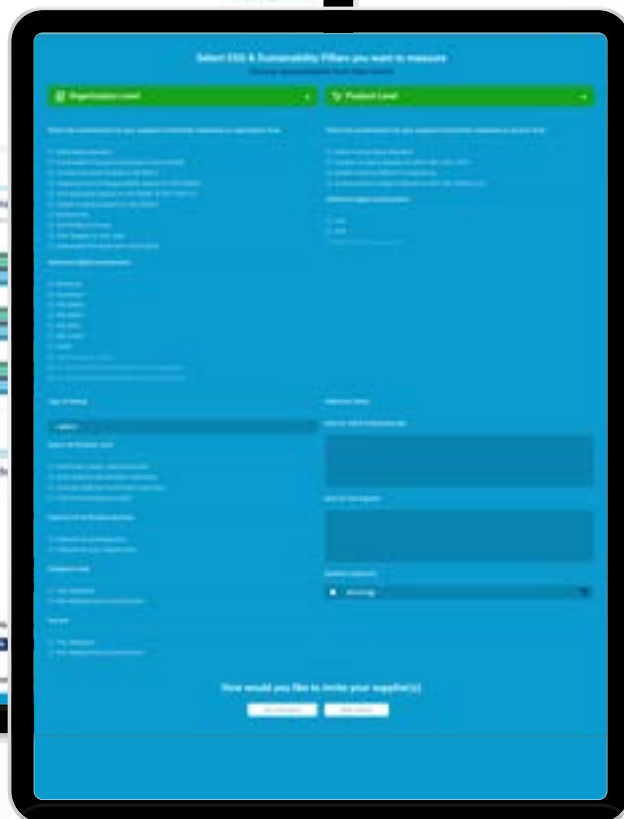


**Compare your suppliers**

# Supplier listings

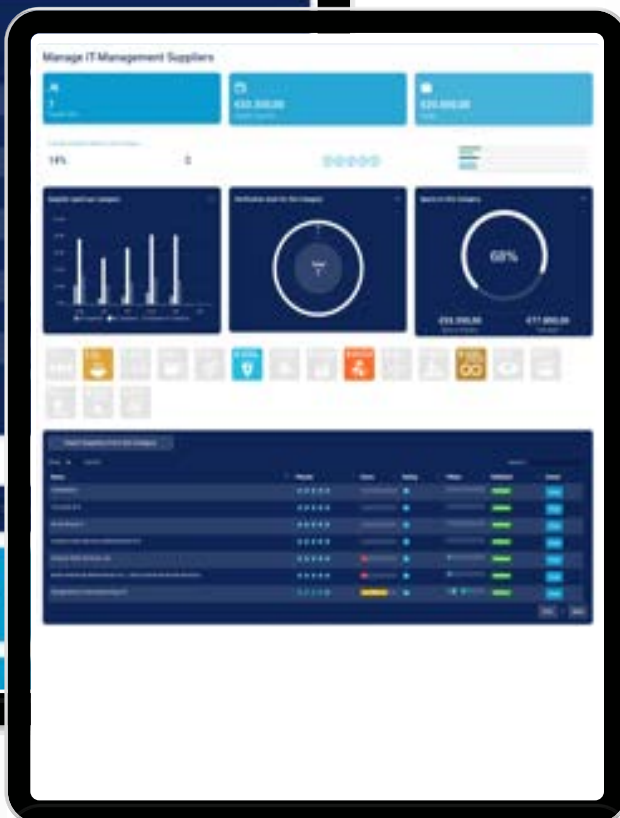
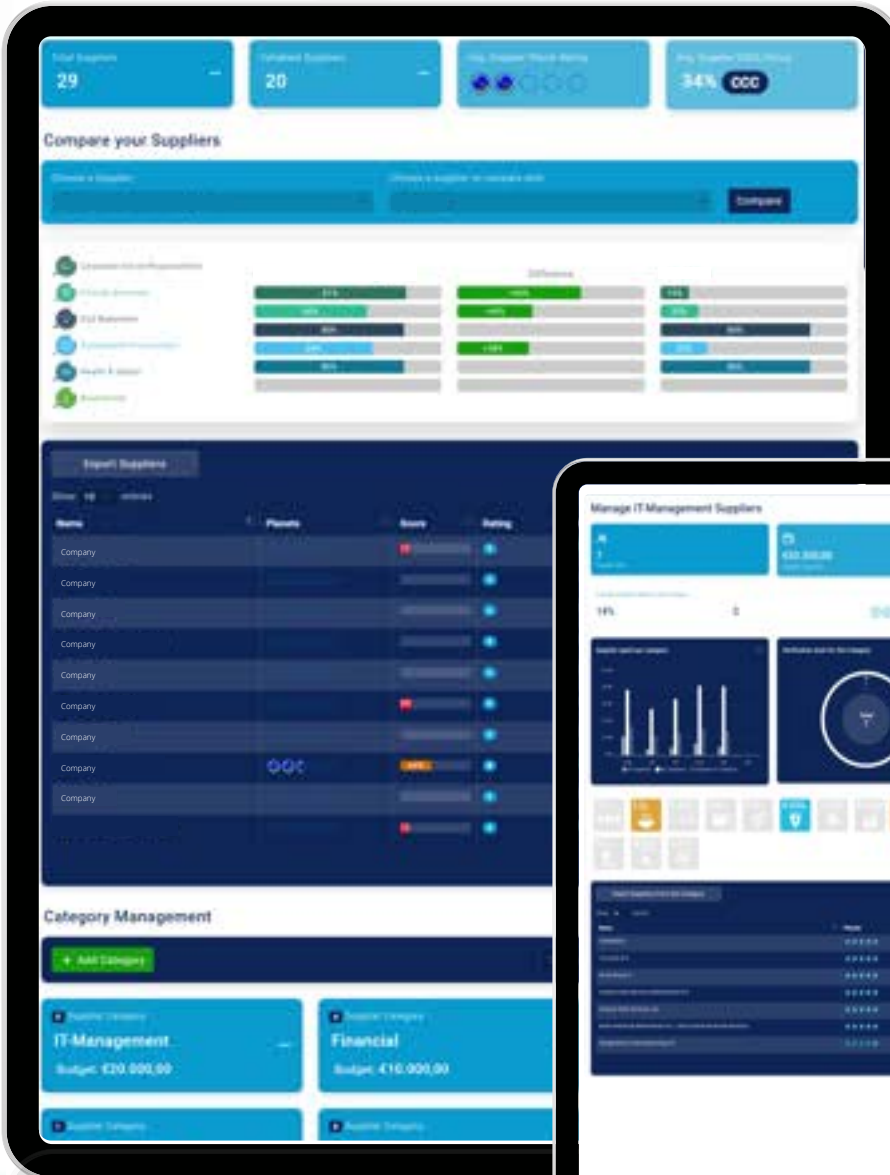


Invite your supplier for tenders, RfP's and supplier transparency assessments

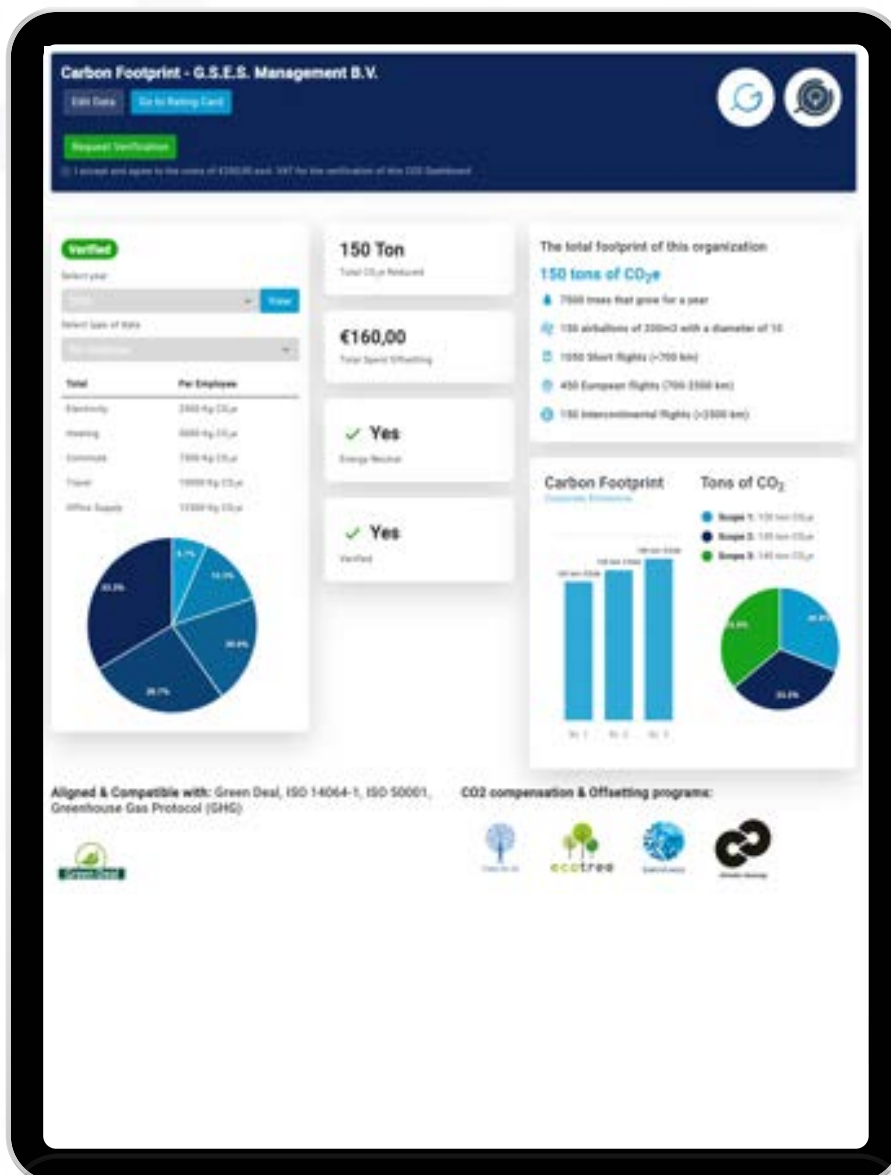


# Supplier dashboard

Category management of supply chain



# Carbon Footprint dashboard



## Verification and Certification of the GSES Assessments

All audits via the GSES, including the Global Sustainable Enterprise Standard & the Sustainable Footprint Standard, are independently validated and audited to guarantee the results of the outcome and verify sustainability claims. The independent validation policy of the GSES and the steps towards certification are explained below:

**1. Meta Standard:** A 'Validation' / exemption method based on (valid) supplied certificates/reports on the GSE-Meta Standard - Organizational 1st & 2nd Level.

**2. Desk Audit:** A "Desk Audit" concerns a 'verification' based on supplied data. During a Desk Audit, the content of the burden of proof is checked remotely. Professional certifying institutions perform the desk audits. Conducting a desk review before the onsite audit is cost-efficient, as it shortens the time required to perform an onsite audit.

**3. Onsite Audit:** An "Onsite Audit" concerns an onsite audit on location. The external audits are performed by certification bodies supervised by the RvA (Accreditation Council).

Accredited and licensed Certification Bodies execute external audits. GSES System Full Members can request an external audit on the GSE-Standard (organization and supply chain level) and the Sustainable Footprint Standard (product/project level). All audits are performed independently by certification bodies that comply with ISO 17021. and ISO 17065."

### 4. Fact Check

In fact, a Fact Check is simply a request for proof that the claims made about a product are true. By enabling a real and transparent exchange between civil society, companies and governments.



## Investment & Green Loans Dashboards

On the GSES platform you can integrate ESG & Sustainability factors into the entire life of a loan, from loan application through periodic loan review.

This is made possible by our Loan Book feature, a dashboard which only features green loans. On this dashboards the following features are available:

- Measure Green Bonds
- Monitor Green Bonds
- Verify your Green Bonds
- Invite clients for measuring, monitoring & verification
- Calculate interest based on verified and real time data Including; CSR, Circular Economy, Sustainable Procurement, CO2/Carbon emissions, Health & Safety, Inclusivity and Diversity
- Taxonomy monitoring scheme
- Target setting per loan / Green Bond
- Independent verification by certification institutions
- Risk management of Green Bonds

This way, your organisation can track any reliable information regarding its green loans. To enable this we have created the sub-branch of GSES called the Global Sustainable Taxonomy System. Of course, it is accessible from our platform: <https://gses-system.com/>.





## FAQ for ABN-AMRO stakeholders

### **Who can see the ratings?**

Your ratings/score (s) will be included in the GSES Database, which is currently freely

### **What happens to the data?**

The data is of course stored securely. For more information about this, please refer to [www.gsessystem.com](http://www.gsessystem.com). Questionnaires that you complete and provide with the burden of proof that is not visible to third parties. This information is only accessible to you, GSES, and if you want an Audit also (temporarily) for the auditor (CB).

### **What if suppliers do not want to participate?**

ABN AMRO requires suppliers to demonstrate their independently verified sustainability ratings, whereby a GSES Meta-reporting (audit) is required as a minimum. This requires at least a GSES Limited Membership and a GSES Meta Report (desk audit) once a year. Suppliers are encouraged to have their independently verified sustainability policy (further) assessed by GSES in order to complete the "sustainability profile" by means of a GSES Full Membership. You, as a supplier, can also use this sustainability profile towards your other customers, possible tenders, etc.

### **Data ownership**

Data ownership is increasingly important. Data sharing is a good thing if it serves the common good, but data privacy is also very important. Recognized data ownership and guaranteed data integrity are the basic principles of GSES System. As GSES System we respect the data ownership of organizations. And based on that "recognized" ownership, many organizations want to share a lot of data without any problems. We, therefore, respect the value of everyone's data and handle it carefully. We believe that is the ethical and sustainable precondition for our new open information society.

### **Public (shared) data**

Business-sensitive data does not go back and forth on the GSES System platform. As GSES System, we only use open public metadata, such as certificates, reports, etc. Business-sensitive documents are only shared with the user and possibly, if necessary, with the auditor.

### **Who can see the ratings?**

Your ratings/score (s) will be included in the GSES Database, which is currently freely accessible to everyone.

### **Optimize your score**

You may not have any quality marks and/or certificates that are exempt or you may want to optimize your score. If you choose a Pro Membership or Full Membership you have the option to make Assessments on multiple sustainability themes and on multiple levels such as; Corporate Governance, Supply Chain, Product / Project. If you have any questions, please contact us.

<https://gses-system.com/contact/>

## Pricelist

Type of membership	Annual Turnover	Annual	Monthly	No. Desk Audits include
*GSES Limited Membership	GSEM - Administration GSEM - 1 registration fee	€ 250,00	-	-
	GSEM - 2 per report/ certificate	€ 149,95	-	-
**GSES Pro Membership	€ 0 - € 10 mln	€ 1.750,00	€ 145,83	3
**GSES Pro Membership	€ 10 mln - € 100 mln	€ 2.500,00	€ 208,33	4
**GSES Pro Membership	> € 100 mln	€ 4.000,00	€ 333,33	4

\*Maximum 5 certificate validation included per year - per organization on GSE Metastandard 1st line

\*\*Annually - based on 3 year membership duration. Including the number desk audits annually time period to use is maximum 1 year.

This information contains indicative prices and information, no rights can be derived from this. Our General Terms and Conditions and any updated version thereof declared applicable apply to all our proposals, offers and services. Type and printing errors reserved. Agreements / proposals are only valid in accordance with all general terms and conditions and participant agreements and by in written acceptance and confirmation by GSES.



## Benefits



- World's only overarching rating system
- Based on verified data & certifications
- Open source input structure
- Risk-free sustainability ratings for e-commerce, booking platforms, stock exchanges, review and comparison platforms and buyers
- Single, clear verified sustainability (ESG) rating based on >500 ecolabels and certificates
- For product and organization ratings

### Reliable measuring system

The essence of the GSES platform is an online measurement system for sustainability. If you participate, you can rank existing and potential suppliers on KPIs. Products and projects can be measured based on circularity, and environmental health effects. And continue to monitor that performance over time to purchase and contract out sustainably structurally.

### Corporate governance

Measure, monitor, and certify your sustainability performance. You can immediately see whether there are areas for improvement. And the good thing is: a good score is an effective marketing tool for customers, employees, residents, investors, and other stakeholders.

### Objectively tested

All measurements on both platforms are based on international norms and standards. With generally recognized certifications and quality marks. Guaranteed up-to-date and entirely correct. Consequence assessed and validated by external auditors. In 77 countries.

### Structured information

You get all information about potential suppliers in one place, your procurement dashboard. You can break down complex supply chains according to location, sustainability, health, safety, quality, products, and projects. And countless other options allow you to make better data-driven business decisions with your head and with your heart.

### Participate in the GSES System

Are you interested in the Global Sustainable Enterprise System? Then contact us via [www.gses-system.com](http://www.gses-system.com).

Measure, monitor, and certify your sustainability performance. You can immediately see whether there are areas for improvement. And the good thing is: a good score is an effective marketing tool for customers, employees, residents, investors, and other stakeholders."

## Participate in the GSES

All information presented in this brochure has been compiled with the greatest possible care. Nevertheless, the compilers of this brochure do not accept any liability for any inaccuracies.

Any form of liability for any damage, direct or indirect, as a result of the information provided, is therefore expressly rejected by the compilers. In addition, the information, pricing, etc. are subject to ongoing changes.

Are you interested in the Global Sustainable Enterprise System?  
Then contact us via [www.gses-system.com](http://www.gses-system.com)

