

MONIER

Romana light[®] Mineral Roof Tile

The new light weight
roof tile



Red

Part of **BMI**

www.bmigroup.com/in

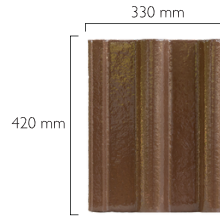
ROMANA LIGHT

LIGHT WEIGHT MINERAL ROOF TILES

MONIER

Features

- Light weight & Stylish design
- Improved top coat
- High breaking strength
- Low water absorption
- Durable and attractive colours



Technical Data

Width & Height	330 mm x 420 mm
Weight / tile	3.6 to 3.8 kg
Batten space	345 mm
Tile / sqm	9.7 pcs
Min slope Reqmt	200



Red



Deep Brown



Dark Grey



Graphite

Coverage and unit weight of tiles at various slopes

Slope (in degrees)	Minimum overlapping	Maximum batten space	Coverage	Weight
>20 and <27	100 mm	320 mm	0.966 / sq ft	+ 3.19 kg / sq ft
>20	75 mm	345 mm	0.890 / sq ft	+ 2.94 kg / sq ft

Fittings



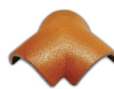
Ridge End



Ridge Tile



Hip Starter



3-Way Apex



4-Way Apex

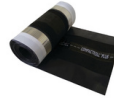


Barge Tile

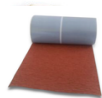


Barge End

Roof System Components for perfect finish, water-tightness and skylight



Compact Roll Plus
to ventilate ridges and hips



Easyflash
for waterproof abutments



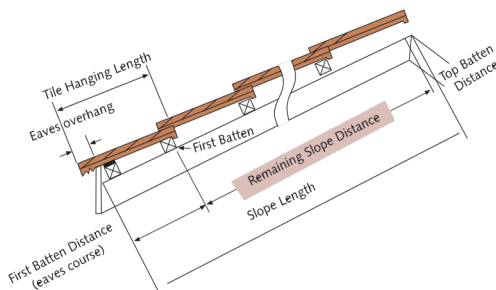
Valley Metal Sheet
for orienting water



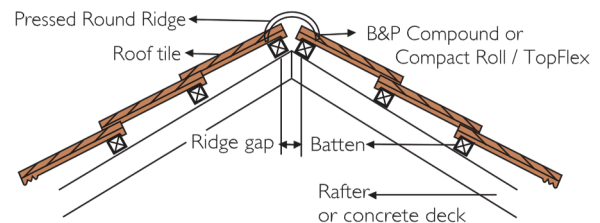
Veltisun Radenshield
for waterproofing and heat reduction



Radiant Barrier
for heat reduction



Romana light should be laid in break joint only



The colours shown here are reproduced as close to the original as digital/printing technology allows. For best accuracy on colour selection, refer to actual roof tile. Date as of 10th October 2024. To be laid in break joint only.

Visit our exclusive showroom and orientation center,
Monier Roofing Pvt Ltd.
143/C3, Bommasandra industrial area, 1st phase, Bangalore - 560099
Mob: +91 90191 10303
Email : contact.india@bmigroup.com, www.bmigroup.com/in



Authorized Roofing Partner

- Facebook: [facebook.com/bmigroup.india](https://www.facebook.com/bmigroup.india)
- Instagram: https://www.instagram.com/bmi_india/
- Chat @ 90191 10303