

tiff

Scotiabank Theatre

Visual Guide

Scotiabank Theatre Visual Guide

Location

259 Richmond Street West, Toronto, ON M5V 3M6

Closest intersection

Richmond St. W. & John St.



Figure 1: A Map of downtown Toronto with Scotiabank Theatre at Richmond St. W. and John St., and Adelaide St. W. to the south.

General information

- This venue is general admission

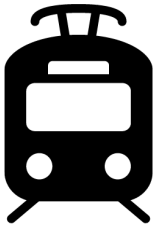
Routes of arrival

*Please see Festival Street closures



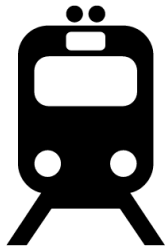
Subway

Scotiabank Theatre is located near Osgoode Station on Line 1. It is a 500 m or 6-minute walk from Osgoode Station to the theatre.



Streetcar or bus

The Queen Streetcar (Route 501) stops at Queen St. W. & John St. It is a 150 m or 2-minute walk from the streetcar to the theatre.



GO Transit or VIA Rail

Scotiabank Theatre is a 1.6 km or 21-minute walk from Union Station. From Union station the subway can be taken Northbound to Osgoode Station.



Driving

Accessible underground RioCan Hall paid parking lot is within 30 m.

The entrance and lobby

- Patrons with accessibility needs should arrive via the main entrance.
- Passenger drop-off is possible in front of the theatre with curb ramps outside the venue with a step-free, wheelchair-accessible entrance
- The front doors utilize a push-to-open button on the doors furthest to the right of the entrance
- There are currently no tactile colour-contrast cane detection tiles or truncated domes at the entrance or drop-off areas
- There is a small overhang available for protection from the elements



Figure 2: A photograph of the Scotiabank Theatre entrance with the accessible push-to-open button to the right side



Figure 3: A photograph of the Scotiabank Theatre entrance doors

Rush lines

- Rush lineups are located on Richmond St. heading west away from the entrance to the building. If the lineup is large it curves and heads south on Widmer.

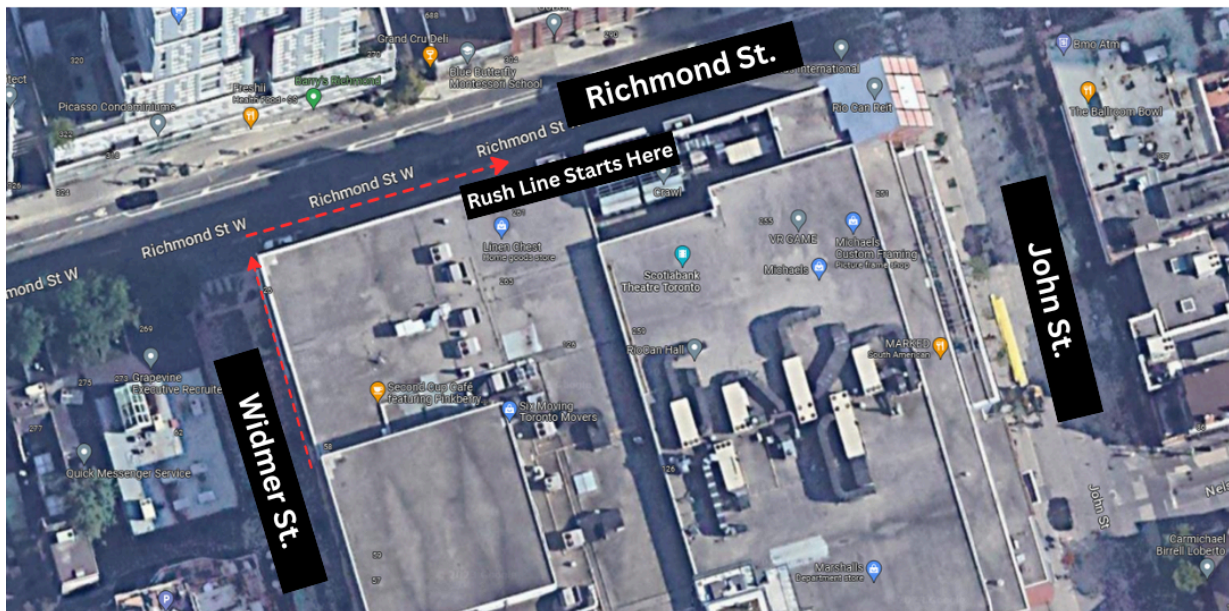


Figure 4: A photograph of the Rush line for Scotiabank Theatre. An arrow pointing along Richmond St. W. and heading south down Widmer St.

Access to theatres

- Access to the theatres include stairs, escalators, and an elevator
- Patrons who need elevator access can find the elevators located to the right (south) of the “up” escalators
- There are 75 stairs to get to the second floor
- There is escalator access both up and down from the second floor
- There is a ramp to access theatres 5–11

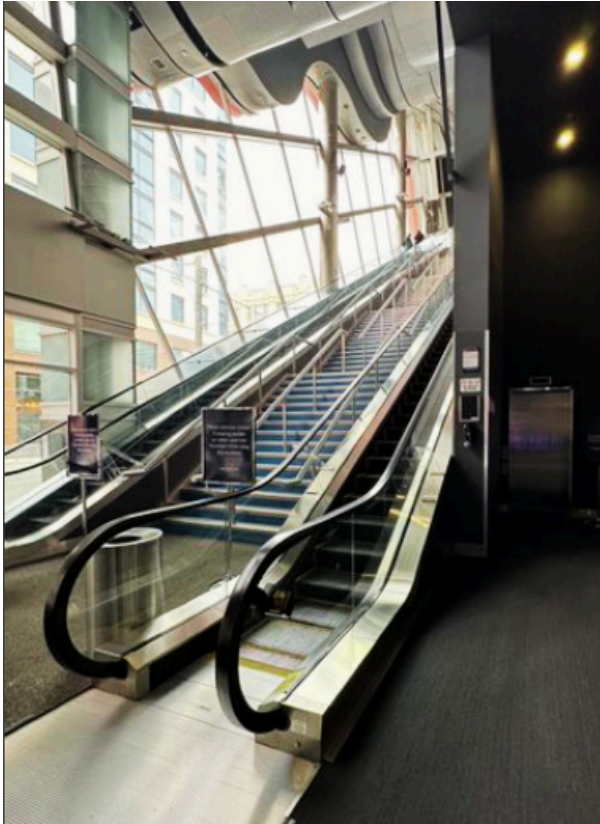


Figure 5: A photograph of the up and down escalators at Scotiabank Theatre. The “up” escalator is to the right and the “down” escalator to the left. The elevator is to the right of the escalators



Figure 6: Elevators to exit

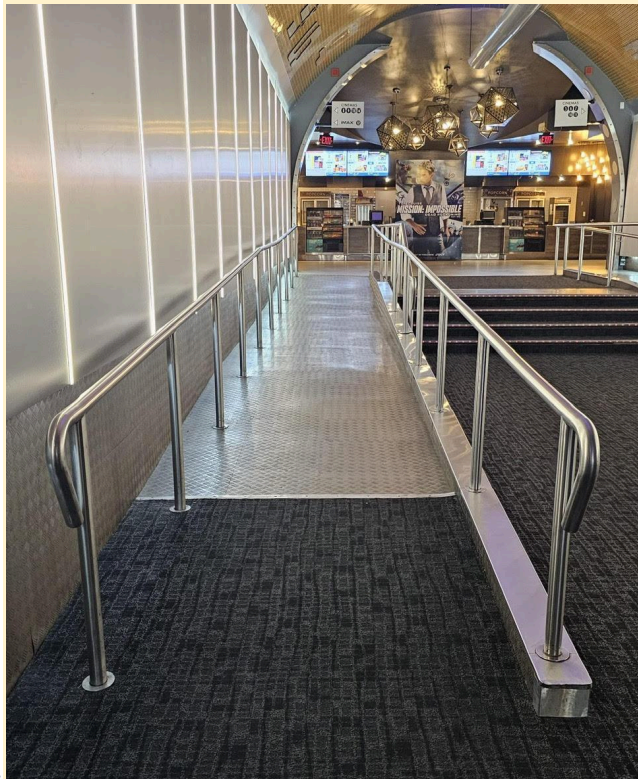


Figure 7: Photograph of the ramp leading towards cinemas 5–14.

Venue measurements

Door/Area	W x H	Notes
Front Doors	70 inches	When both doors open, width is 65"
Curb Height (front doors)	4.5 inches	
Elevator Doors	3 feet	Both ground floor + 1st floor
Escalator	31 inches	
Double doors - Reps Lounge	80 inches	
Bar Counter Height	43 inches	
Box Office Counter Height	36 inches	
Concessions Counter Height	35 inches	
Cinema 1 Doors	67 inches	
Cinema 2 Doors	67 inches	
Cinema 3 Doors	65 inches	
Cinema 4 Doors	66 inches	
Cinema 5 Doors	67 inches	
Cinema 6 Doors	67 inches	
Cinema 7 Doors	67 inches	
Cinema 8 Doors	66 inches	
Cinema 9 Doors	64 inches	
Cinema 10 Doors	67 inches	
Cinema 11 Doors	67 inches	
Cinema 12 Doors (IMAX)	70 inches	main entrance (before the doors) : 117 inches
Cinema 13 Doors	68 inches	
Cinema 14 Doors	69 inches	main entrance (before the doors) : 82 inches
Accessibility Ramp (in building)	50 inches	
Accessible Washroom 1	33 inches	
Accessible Washroom 2	33 inches	

Accessible Seating

*Most cinemas have 2–3 steps between each row. Cinemas 12 (IMAX) has 1–4 steps between rows

Cinema	Accessible seating	Companion seating	Step-free seating
Cinema 1 Total Seats: 552	4 seats	2 seats	Row A
Cinema 2 Total seats: 476	6 seats	6 seats	Rows AA, BB, and A
Cinema 3 Total Seats: 387	3 seats	2 seats	Row A
Cinema 4 Total seats: 388	3 seats	1 seat	Row A
Cinema 5 Total seats: 134	3 seats	2 seats	Row A
Cinema 6 Total Seats: 137	3 seats	2 seats	Row A
Cinema 7 Total Seats: 184	3 seats	2 seats	Row A
Cinema 8 Total Seats: 182	3 seats	1 seats	Row A
Cinema 9 Total Seats: 189	3 seats	2 seats	Row A
Cinema 10 Total Seats: 228	4 seats	2 seats	Row A

Cinema 11 Total Seats: 227	4 seats	2	Row A
Cinema 12 (IMAX) Total Seats: 412	4 seats	4	Row C
Cinema 13 Total Seats: 314	4 seats	2	Row A
Cinema 14 Total Seats: 309	4 seats	2	Row A

Assistive devices and services available

Closed Captions	Yes*	<ul style="list-style-type: none"> ● CaptiView ● Compatible with all theatres
Assisted Listening	Yes	<ul style="list-style-type: none"> ● Receivers with headset or neckloop option
Descriptive Sound	Yes*	<ul style="list-style-type: none"> ● Receivers with headset or neckloop option

*Closed Caption or Audio Description are subject to content including a Closed Caption and/or Audio Description option

Concession stand

- Food, drinks, and alcohol can be purchased the concessions and outtakes stands, or bar/lounge area
- No outside food or drinks
- Cash, Debit, and Credit are accepted
- Water fountains are available near the accessible washroom on the left side of the Outtakes counter

- Water Bottles can be refilled with concession attendants and audience members can request a cup of water

Washrooms

- The closest washrooms to the cinemas are located in the hallway directly across from Cinema 6 and are accessible



Figure 8: Photograph of accessible washroom near concession stand

Gender neutral	No	
Sensored flushing	Yes	
Sensored faucets	Yes	
Automatic soap dispensers	Yes	
Sensored hand dryers	Yes	No paper towel
Change tables	Partial	Family Washroom near concession