



# NYC Parks Tree Planting

Parks

# Tree Planting Program

## Goals of the program

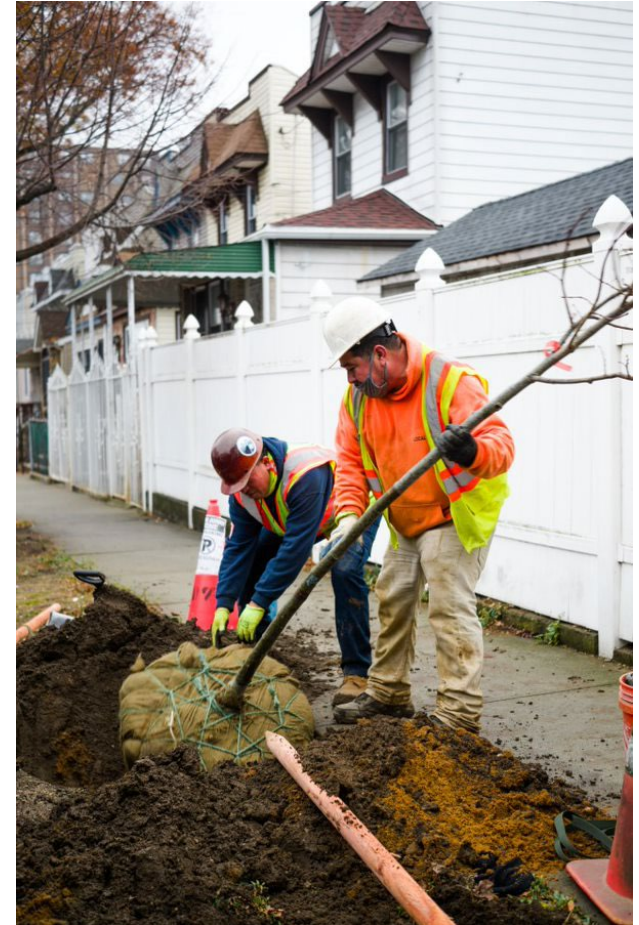
- **Increase canopy cover to:**
  - *Reduce storm water runoff*
  - *Mitigate the impacts of heat*
  - *Improve air quality*
  - *Reduce CO<sub>2</sub> emissions*
  - *Reduce energy costs*
  - *Beautify our streets*
- **Enhance the quality of life for New Yorkers**
- **Connect residents to the environment**



# Tree Planting Program

## Who we are

- “Central forestry”
  - Plant trees within the public right-of-way (ROW)
    - **Street trees**
    - **Park trees** (on NYC Parks properties)
    - All planted through dedicated contracts
      - Structured by borough; community boards, council districts
      - 15–25 contracts per fiscal year
      - Managed by a team of **18 foresters, 5 senior foresters**
    - Target 15,000–18,000 trees planted/FY
  - In-House Planting pilot program
  - NYC Parks Tree Time

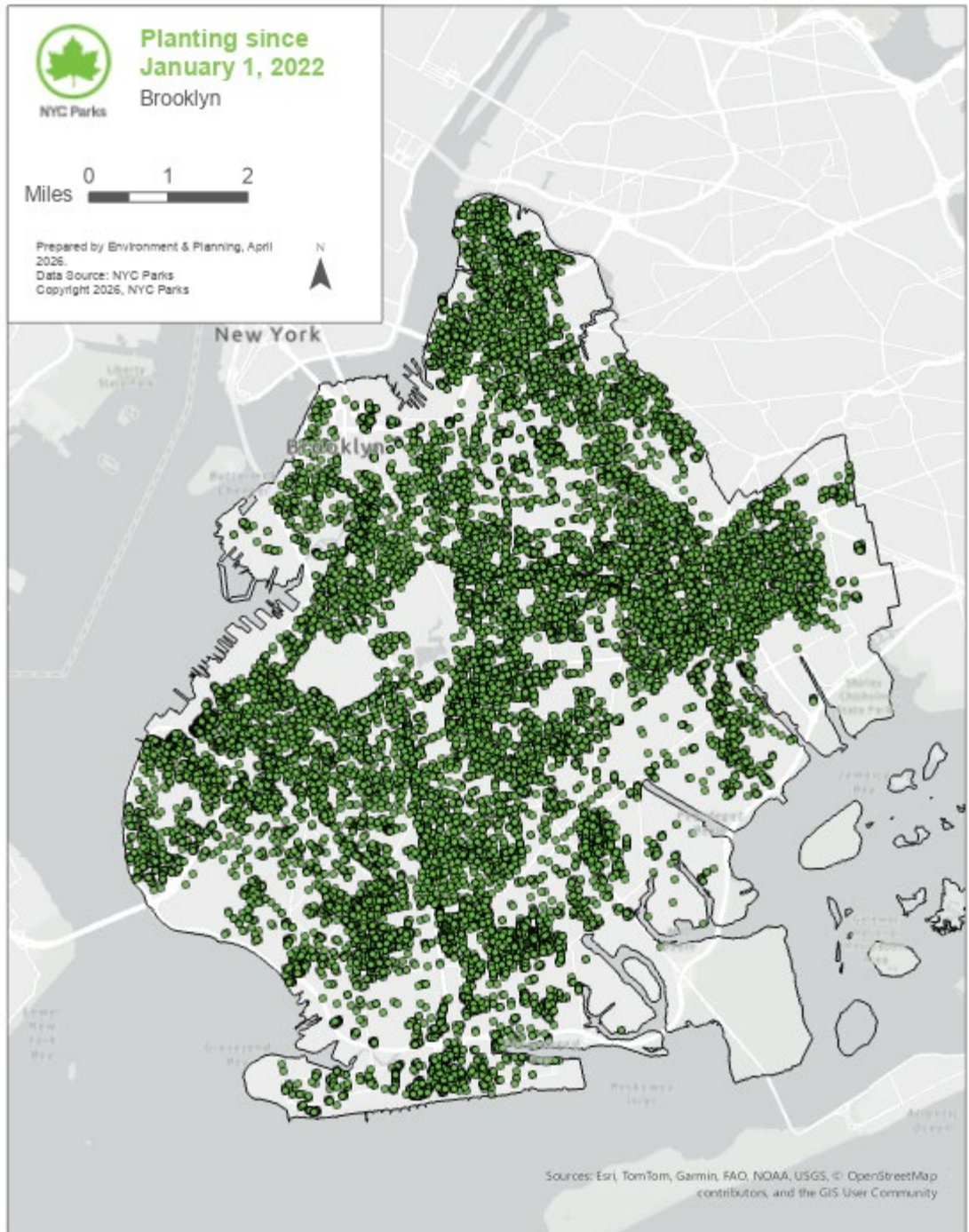


# How we are funded

- **Mayoral (baseline, one-shot)**
  - Baseline funding
  - Major initiatives such as Cool Neighborhoods
  - New needs requests
- **City Council/Borough Presidents**
  - Discretionary funding
  - Participatory Budgeting
- **Legal Obligations**
  - Public Replacement (*interagency*)
  - Private Replacement (*permitted removals*)
  - Private Restitution (*fine for damage/destruction*)
  - Tree Fund (zoning)



# Tree Planting Map – Brooklyn



# Tree Planting Map – Prospect Heights

(Neighborhood Tabulation Area boundaries)



NYC Parks Tree Planting

# Planned Plantings – Prospect Heights

(Neighborhood Tabulation Area boundaries)

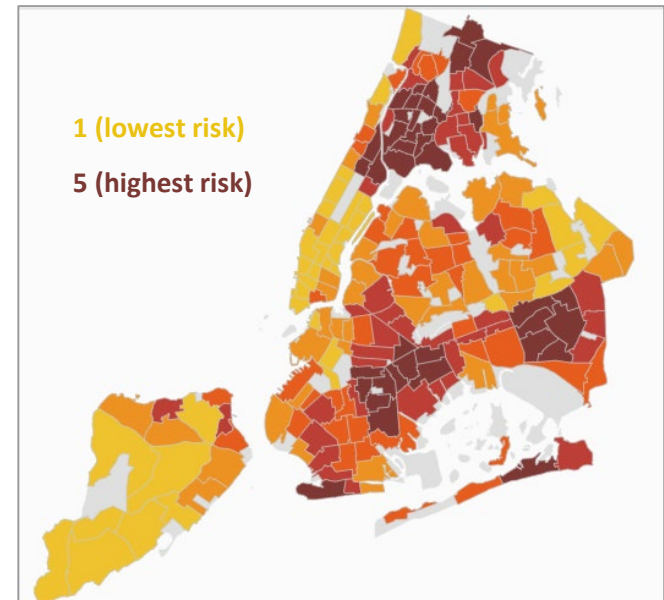
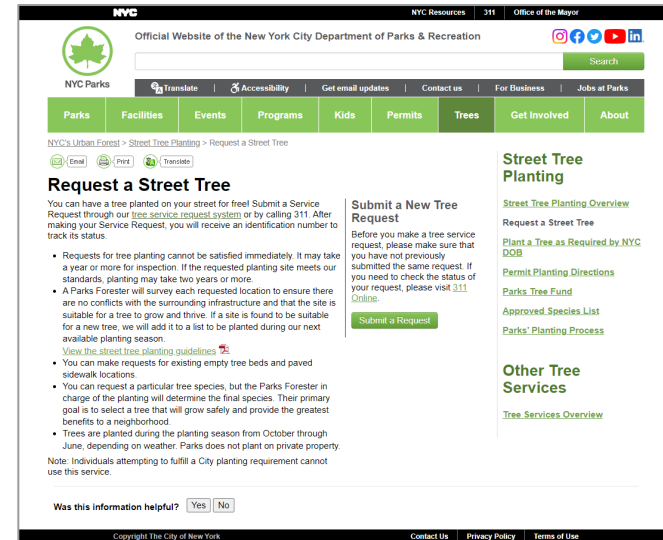


NYC Parks Tree Planting

# Past Approach to Street Tree Planting

“Follow” different mandates around the city:

- Public service requests
- Heat Vulnerability Zones
- City Council funding
- Legal Obligations
  - Tree Replacement
  - Tree Fund for Zoning



# The Issue

- Our past approach to multiple mandates resulted in inefficiencies
- Service Request backlog of 42,000+; wait times averaged of 3 years
- We are still committed to finishing HVI 4 and 5 by the end of CY 2027 (~30,000 trees)

**Bottom Line:** We were offering a public service but not delivering on it with any consistency or predictability.



# New Approach: Neighborhood Tree Planting

- Serve and complete discrete geographic areas to fully plant before moving on to the next area
- Comprehensive neighborhood streetscape improvements
  - Remove trees and stumps and replant where possible
  - Close empty unplantable tree beds
- This approach required us to discontinue intake of public tree planting service requests; however, all feasible planting opportunities will be filled through this program, while in each neighborhood

## Benefits

- Community-focused
- Comprehensive - will reach all neighborhoods
- Efficient
- Anticipated cost-savings

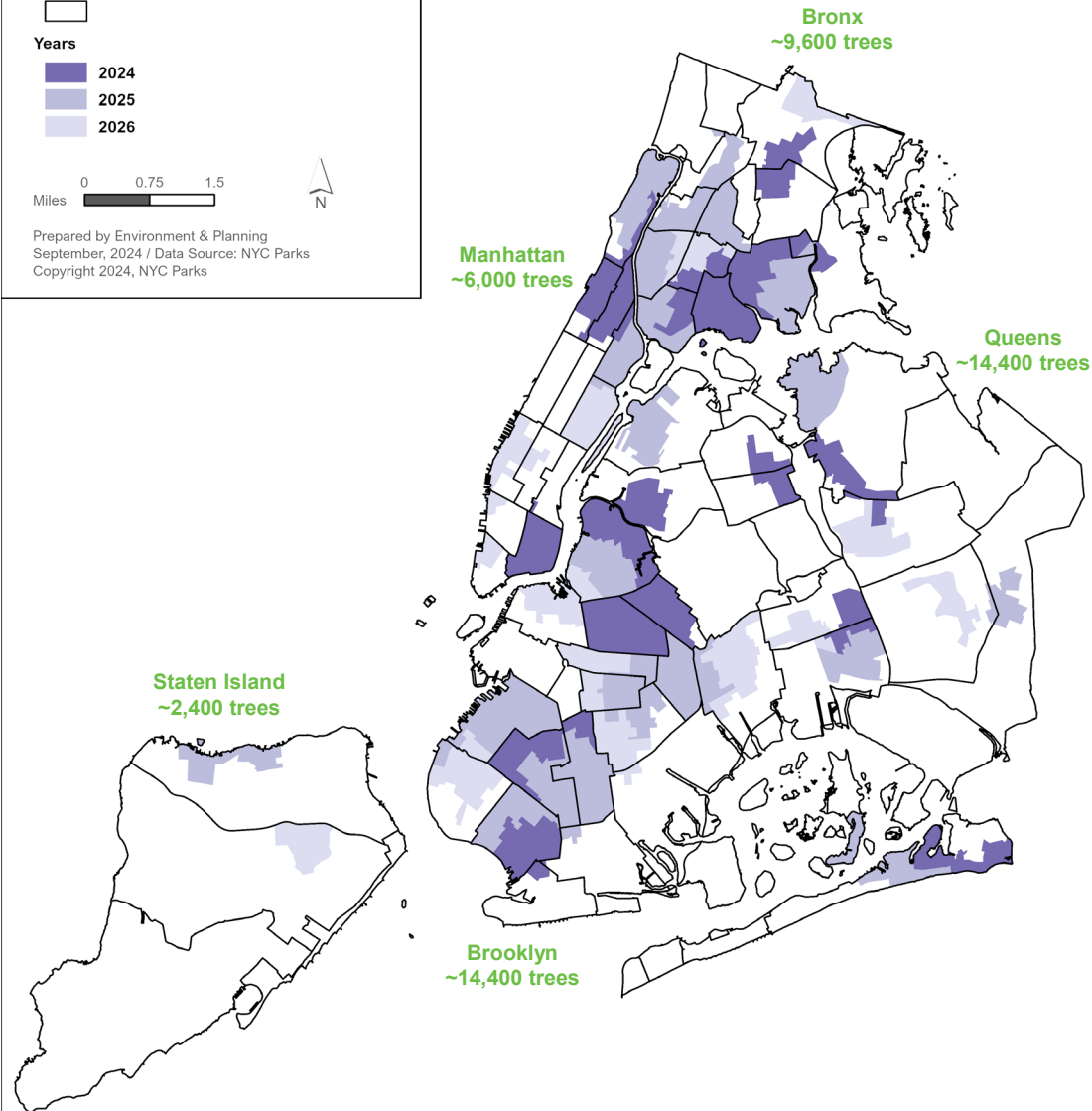
## Prioritization Criteria

- Heat Mitigation – serve highest HVI zones first
- Equality – reach portions of each community board every three years
- Efficiency – accomplish other tree maintenance tasks during same cycle



# Transition Phase

- From 2024 through 2026
- Use current and in-procurement contracts
- Pilot neighborhood surveying to help estimate future contract needs
- Focus on HVI 4 and 5
- Satisfy all current allocations from Councilmembers
- Minimal tree bed closures
- All current stump and tree removal programs continue



# Full Implementation

- Integrate tree bed closures, tree and stump removals and replacements with tree planting
- Serve parts of every community board on a 3-year cycle
- Reach the entire city on a 9-year cycle



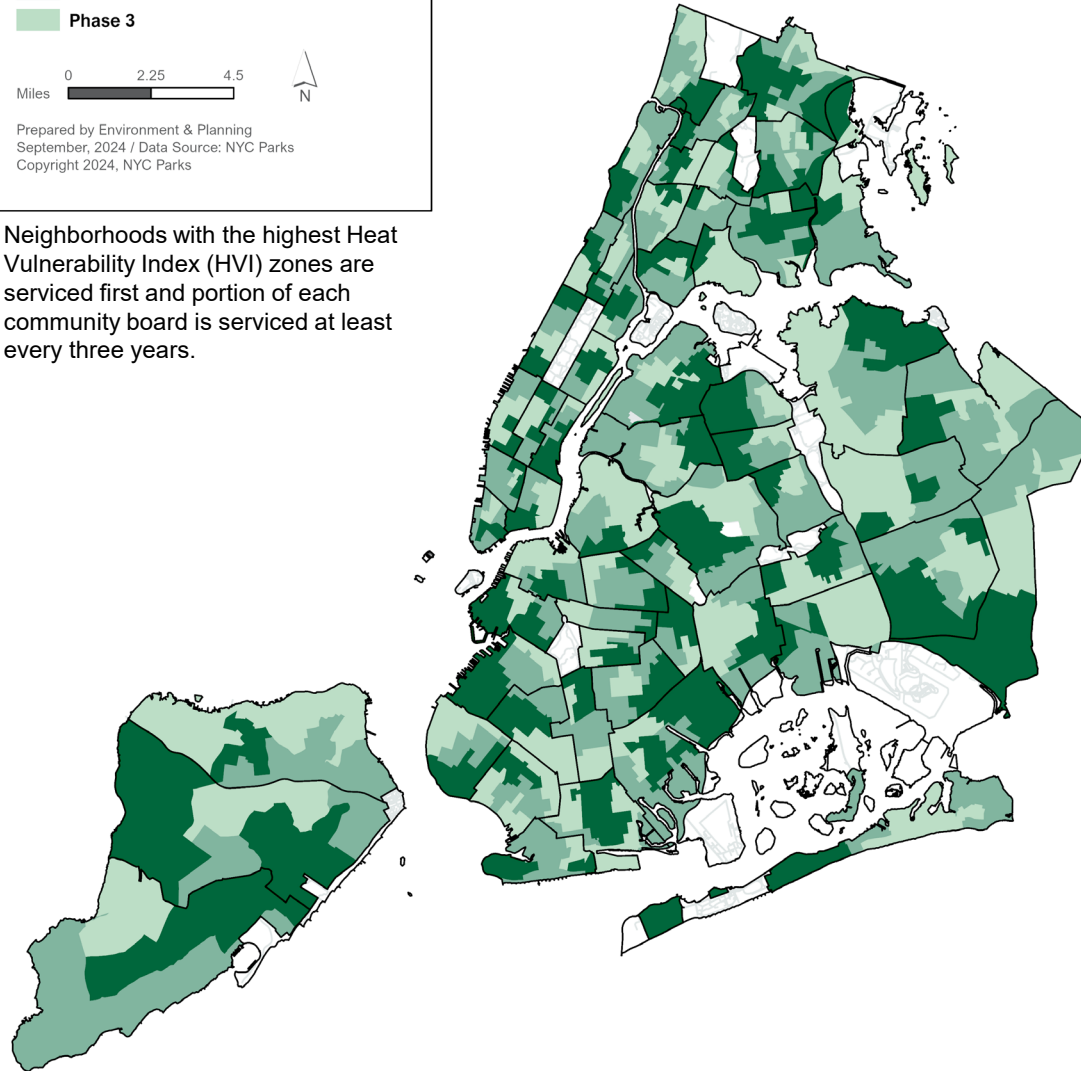
## Neighborhood Tree Planting Proposed Cycle Citywide

- Community Board
- Phase 1
- Phase 2
- Phase 3



Prepared by Environment & Planning  
September, 2024 / Data Source: NYC Parks  
Copyright 2024, NYC Parks

Neighborhoods with the highest Heat Vulnerability Index (HVI) zones are serviced first and portion of each community board is serviced at least every three years.



# NYC Parks Tree Planting Standards

- Above-ground infrastructure
- Below-ground infrastructure
- Resources for the tree



## Choosing Species

- Availability of overhead space
- Availability of rooting space
- Is the location **harsh** or **nurturing** for the tree?
- Diversity
- Aesthetics



Thank you!