

# FABRICUT®



## GIORGIO PERFORMANCE

THIS MODERN PERFORMANCE RUG HAS A THICK PILE WITH A BORDER FRAME. THE RIBBED VELVET DESIGN PROVIDES A HEATHERED EFFECT, ADDING VISUAL INTRIGUE AND APPEAL. GIORGIO IS HAND LOOMED WITH A RECYCLED POLYESTER YARN THAT IS EASY TO CLEAN AND FADE RESISTANT.



Pile shedding is a normal characteristic of heavy quality rugs. When necessary, clip them flush to the rug surface, but avoid pulling the yarn knots out of the surface pile. Suction vacuum is preferred. If vacuum has a beater bar, make sure the setting is high enough to avoid damaging the rug.

Blot spills with a clean sponge or cloth. For stubborn spots, use a mild soap and water mixture. Work solution in slowly, rinse and blot to remove soap residue.

Rug padding is recommended.

Natural variation of color and texture may occur.



9303 EAST 46TH STREET · TULSA, OKLAHOMA 74145 · PH: 833-662-7043 · FAX: 800-888-7171  
FABRICUT.COM · RUGS@FABRICUT.COM

# GIORGIO

Shown in Mink | 9x12



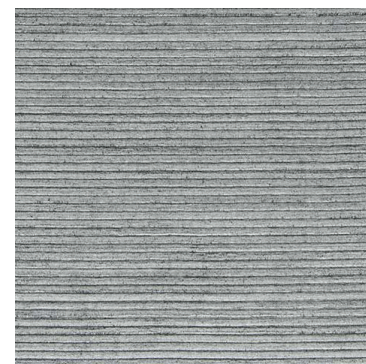
INDIGO



MINK



POLAR



SILVER

**Sizes available:**  
• 6x9, 8x10, 9x12, 10x14  
Custom sizes, made to order.

100% Recycled Polyester  
Hand woven in India by artisans  
Performance