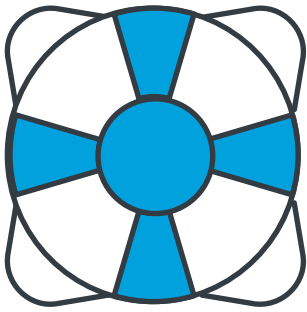


## Integrated Workers' Compensation

Square Payroll partnered with AP Intego to offer integrated pay-as-you-go workers' compensation.

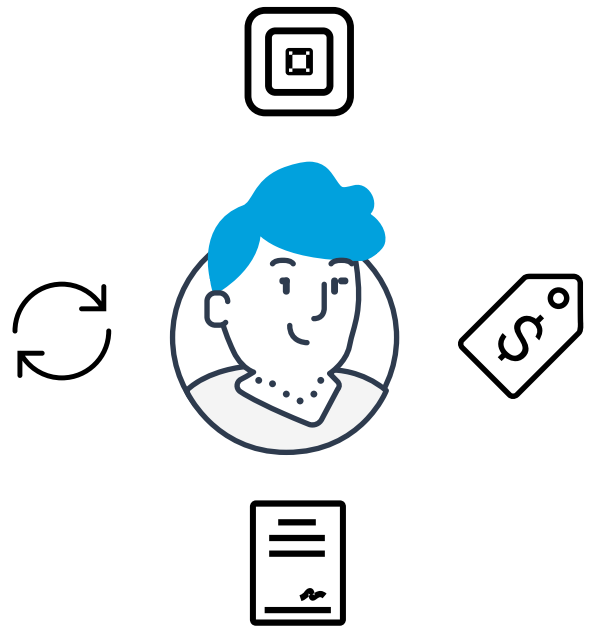


### Why AP Intego?

- ✓ Protects your business and employees
- ✓ Stay compliant with state laws
- ✓ Spread the cost out over the year with pay-as-you-go billing

### How it works:

- 1 Create a Square Payroll account and add your employees
- 2 Request an instant workers' comp quote in your payroll dashboard
- 3 Sign your policy documents electronically
- 4 Your payroll data automatically syncs with AP Intego each pay run
- 5 AP Intego uses your payroll data to calculate your pay-as-you-go premium



### Get an instant quote

- Have a Square Payroll account?  
Log into your payroll dashboard to request a quote from the benefits tab
- Haven't set up a Square Payroll account yet? **Contact AP Intego for a quote**

### Want to talk to a workers' comp specialist?

Call **1-888-289-2939** or send an email to **[info@apintego.com](mailto:info@apintego.com)**

To speak with a Square Payroll Specialist give us a call at **1-800-573-4003**.