

Andermatt

A vision for Swiss Alpine living

Gotthard Residences 404



Andermatt

at Switzerland's crossroads

Nestled amidst stunning mountain scenery, Andermatt offers a unique combination of natural beauty, a rich history, stunning Alpine homes, world-class amenities, and unparalleled hospitality. Andermatt stands tall as one of the most well-connected destinations in the Alps. Conveniently accessible, whether by car or train, the journey to Andermatt is an easy and comfortable one, accompanied by panoramic views of Switzerland's majestic landscape.



By car

The scenic drive is just 90 minutes from Zurich, two hours from Milan and four hours from Munich, offering breathtaking views along the way.



By train

Zurich is just two hours away with a change in Göschenen. Andermatt is also on the spectacular Glacier Express route.



By plane

You can fly into Zurich, Basel and Milan airports. The nearest airstrip for private aircraft is in Buochs, only a 45-minute drive away.



1 — Piazza Gottardo

Central meeting point of Andermatt Reuss, hosting events and concerts all year round.

2 — Furkagasse

Main shopping and dining street.

3 — Andermatt Concert Hall

World-class music and events venue.

4 — Radisson Blu Hotel Reussen

Four-star superior hotel featuring the Uela Spa with 25-meter pool, sauna and steam room.

5 — Andermatt Golf Course

18-hole, par 72 championship course and member of Leading Golf Courses of Switzerland.

6 — Railway station

Connecting you to Sedrun and via the Treno Gottardo in Göschenen to Zurich, Basel and Ticino. Andermatt is also a main stop on the legendary Glacier Express.

7 — The Chedi Andermatt

Five-star Alpine hospitality at its finest and home to Michelin-starred 'The Japanese' restaurant.

8 — Gütsch-Express

The valley station of the cable car to Gütsch at 2,340 m – a spectacular viewpoint with two Michelin-starred restaurants.

9 — Gotthardstrasse

Historic village centre with rustic Alpine charm, authentic restaurants and vibrant bars.

10 — Gemsstockbahn

This legendary cable car is the entry point to the Gurschen Glacier slopes and the freeriders' paradise.

Gotthard Residences

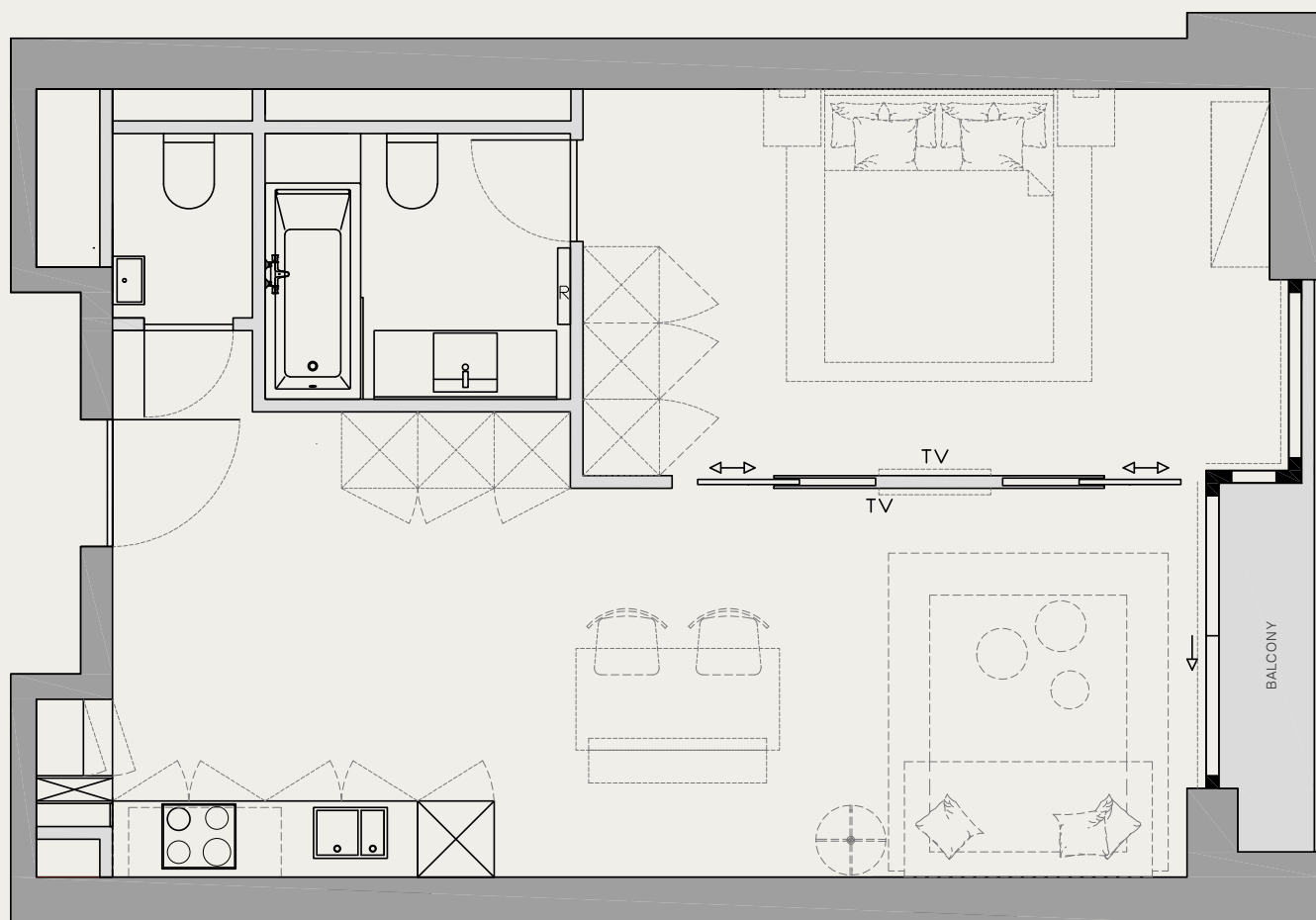
404

Your Alpine home with hotel service

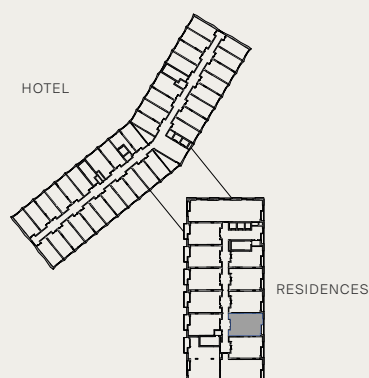


Gotthard Residences

404

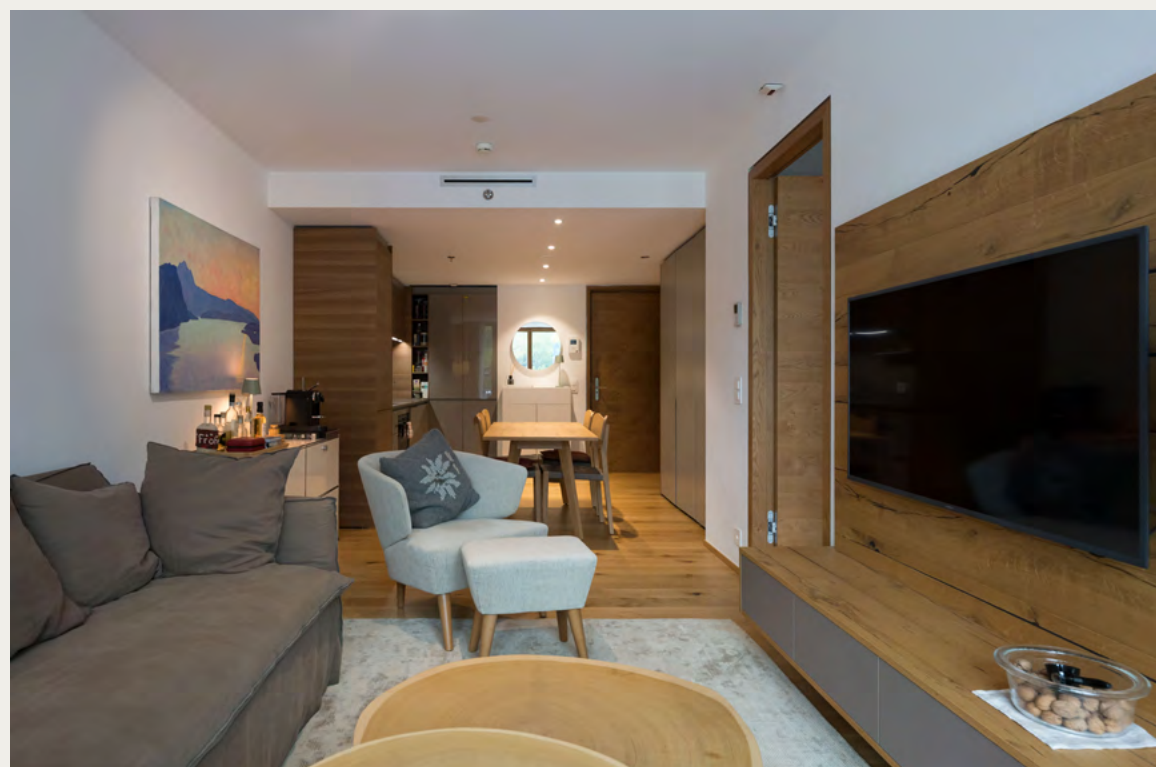


Type	Apartment
Unit	404
Floor	4
Bedrooms	1
Bathrooms	1.5
Cellar	Included
FF&E	Included
Surface	57,9 m ²
Construction year	2018
Availability	Available now
Price	1,090,000 CHF





Living room





Kitchen / Dining





Bedroom





Bathroom



Contact

Real Estate Sales Suite

Bahnhofplatz 3
6490 Andermatt
+41 41 888 77 99
realestate@andermatt-swissalps.ch

andermatt-realestate.ch

Disclaimer and reservations: This brochure shows actual photography of the apartment. No claims may be construed based on any plans, drawings, pictures, interior renderings, 3D views or descriptions. The plans shall have no legal effect in the sense of land register plans or land register enclosures. Modifications, adjustments and/or dimensional changes of the project for technical, architectural, legal or aesthetic reasons remain expressly reserved at all times. Furniture and furnishings depicted in renderings are to be construed as examples only and are not included in sales prices. This document, in whole or in part, may not be reproduced and/or passed on to third parties without the express written consent of the development company or one of its agents. Unsolicited brokers are not entitled to any compensation for their services, neither from the development company nor from hired agents. This sales brochure and any associated documentation are intended as initial information only and not as an offer. These documents will not form a part of any sales agreements or work orders which may follow.





an ORASCOM
DEVELOPMENT
COMMUNITY