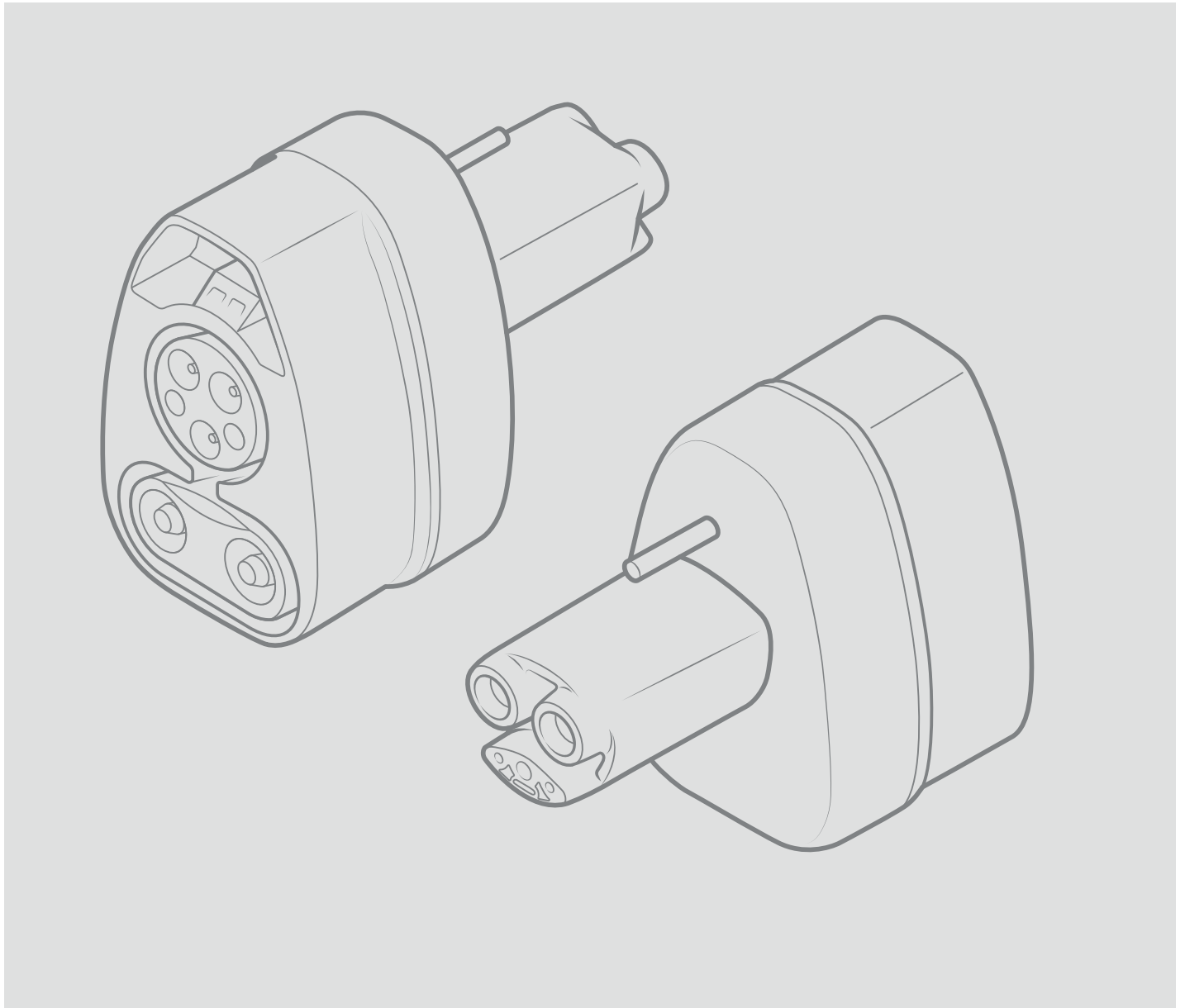




For NACS Vehicles

# Combo CCS1 DC Adapter Guide



# RIVIAN

© 2025 Rivian Automotive, LLC. All rights reserved.

All information in this document and all Rivian software is subject to copyright and other intellectual property rights of Rivian Automotive, LLC, its affiliates, or its licensors. This material may not be modified, reproduced, or copied, in whole or in part, without the prior written permission of Rivian Automotive, LLC, its affiliates, or its licensors. Unless indicated otherwise, all trademarks are owned and registered by Rivian Automotive, LLC, its affiliates, or its licensors in the United States and/or other countries. Please visit <https://www.rivian.com/legal/brand> for Rivian's trademarks and service marks.

Software embedded or accessed by the vehicle may utilize open source software. Please visit <https://www.rivian.com/legal/open-source> for more information.

The images provided in this document are for illustrative purposes only. Depending on the product details and market region, the information in this document may appear slightly different from your product.

# Contents

<b>IMPORTANT SAFETY INSTRUCTIONS</b>	<b>4</b>
Precautions	4
Save These Instructions	4
Risk of Electric Shock	5
Risk of Personal Injury	5
Risk of Damage to Equipment	6
<b>About the Adapter</b>	<b>7</b>
<b>Use the Adapter</b>	<b>8</b>
<b>Specifications</b>	<b>11</b>
<b>Troubleshooting</b>	<b>11</b>
<b>Customer Service</b>	<b>12</b>

# IMPORTANT SAFETY INSTRUCTIONS

## Precautions

The following safety symbols are used in this document:



### **DANGER**

Risk of electric shock



### **DANGER**

Risk of personal injury or death



### **CAUTION**

Risk of damage to equipment

## Save These Instructions



### **DANGER**

- This manual contains important instructions for the Combo CCS1 DC adapter. Before using the Combo CCS1 DC adapter, read all instructions, and follow them during use and maintenance of the adapter.
- Follow the safety instructions and warnings in this guide to reduce the risk of fire, electrical shock, serious injury, or death.



## Risk of Electric Shock



### DANGER

- Don't use this adapter with any charger or EV that is capable of exceeding the adapter's rated voltage or current capacity. Some EVs and EVSE combinations are capable of multiple voltages or limited durations of current overloading designed for normal EVSE to EV connections. Use of the adapter in these situations could result in unsafe conditions such as fire, burns, or exposure of high voltage.
- Use the Combo CCS1 DC adapter with CCS1 DC chargers only. Don't attempt to use the adapter with an AC charger.
- The Combo CCS1 DC adapter is designed only for charging a NACS vehicle. Don't use it for any other purpose or with any other vehicle or object.
- Ensure that the charge port and the charge plug don't contain any foreign debris before you start a charge session. Failure to do so can result in property damage, serious injury, or death. Foreign debris may cause a charging error or overheating. In rare circumstances, extreme overheating can cause a fire. If you find foreign debris, [contact Rivian](#).
- Don't use the Combo CCS1 DC adapter if it's defective, appears cracked, frayed, broken or otherwise damaged, or fails to operate.
- Don't disconnect the charge plug from the Combo CCS1 DC adapter while charging the vehicle.
- Don't put your fingers or any other objects in the Combo CCS1 DC adapter. Doing so could cause you injury and damage the adapter.

## Risk of Personal Injury



### DANGER

Ensure the charge cable with Combo CCS1 DC adapter doesn't obstruct pedestrians or other vehicles or objects.



## Risk of Damage to Equipment



### CAUTION

- Only Rivian-provided Combo CCS1 DC adapters are authorized for use on Rivian NACS vehicles. Use of third-party or incorrect adapters can result in damage to your vehicle.
- When charging your vehicle, use a charger that matches the plug type of the vehicle. Use an adapter only as necessary, when a compatible charger is not available.
- Adapters are not meant for daily use. Using an adapter to regularly charge the vehicle can cause damage to the adapter and to the vehicle.
- Don't use a third-party Combo CCS1 DC adapter to charge the vehicle at any DC fast charger. Charging with incompatible equipment can result in vehicle or property damage.
- Don't use any type of extension cord or cable extender with the Combo CCS1 DC adapter. Using an extension cord can result in vehicle or property damage.
- Don't attempt to open, disassemble, repair, tamper with, or modify the Combo CCS1 DC adapter. The adapter isn't user-serviceable.
- To prevent damage to the Combo CCS1 DC adapter, or any components, handle with care when using or transporting it. Don't subject it to strong force or impact. When the adapter is attached to a charge cable, don't pull, twist, tangle, or drag the cable. Don't step on the adapter.
- Protect the Combo CCS1 DC adapter from moisture, water, and foreign objects at all times. If any exist or appear to have damaged or corroded the adapter, don't use it.
- Don't use this product if the flexible output cable, vehicle connector, vehicle inlet, or the adapter itself has broken insulation, broken or cracked housings, or if internal parts are accessible including wiring.
- Don't damage the Combo CCS1 DC adapter with sharp objects.
- Don't insert foreign objects into any part of the Combo CCS1 DC adapter.
- Don't use solvents to clean the Combo CCS1 DC adapter.

# About the Adapter

This document provides instructions on how to use the Combo CCS1 DC adapter to charge a Rivian North American Charging Standard (NACS) vehicle with a CCS1 DC charger.

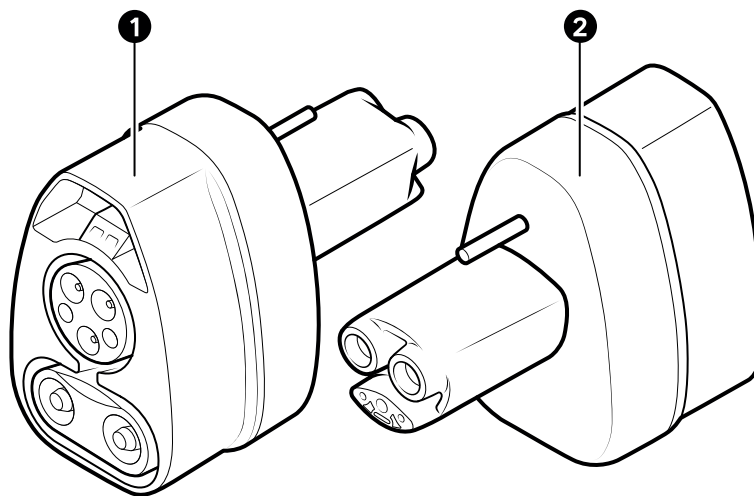
## NOTE

Any damage caused by the use of unauthorized or incompatible charging adapters isn't covered by the New Vehicle Limited Warranty.



## CAUTION

- Only Rivian-provided Combo CCS1 DC adapters are authorized for use on Rivian NACS vehicles. Use of third-party or incorrect adapters can result in damage to your vehicle.
- When charging your vehicle, use a charger that matches the plug type of the vehicle. Use an adapter only as necessary, when a compatible charger is not available.
- Adapters are not meant for daily use. Using an adapter to regularly charge the vehicle can cause damage to the adapter and to the vehicle.



Item	Description
1	Combo CCS1 DC end of the adapter to attach to the CCS1 DC cable plug
2	NACS end of the adapter to plug into the NACS charge port on the vehicle

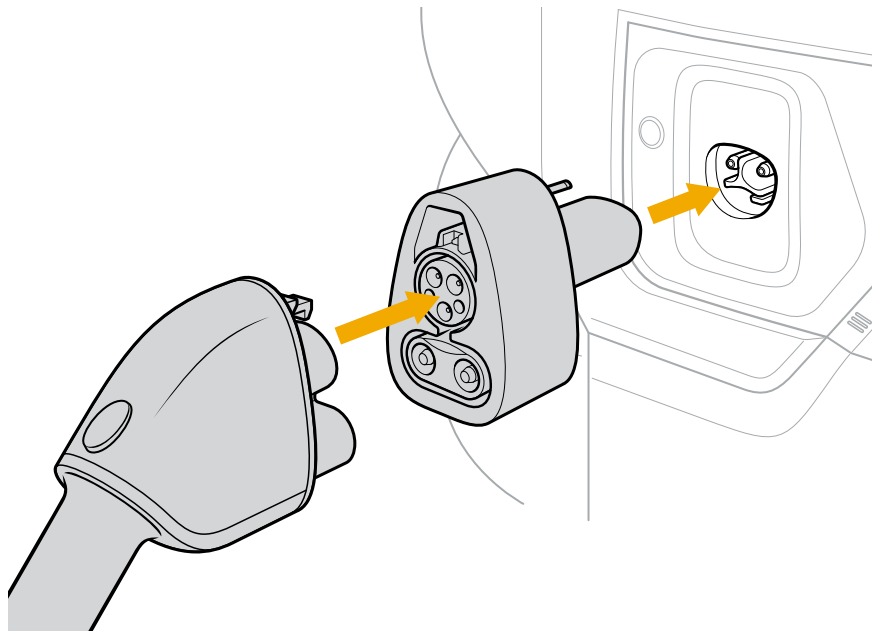
# Use the Adapter



## DANGER

- Use the Combo CCS1 DC adapter with CCS1 DC chargers only. Don't attempt to use the adapter with an AC charger.
- Always inspect the Combo CCS1 DC adapter for damage prior to use. Don't use a damaged adapter.

1. Press the CCS1 end of the adapter onto the charge cable plug until it's fully seated.
2. Align the adapter plug with the vehicle's charge port, and fully insert the plug into the port. The vehicle starts to charge automatically.





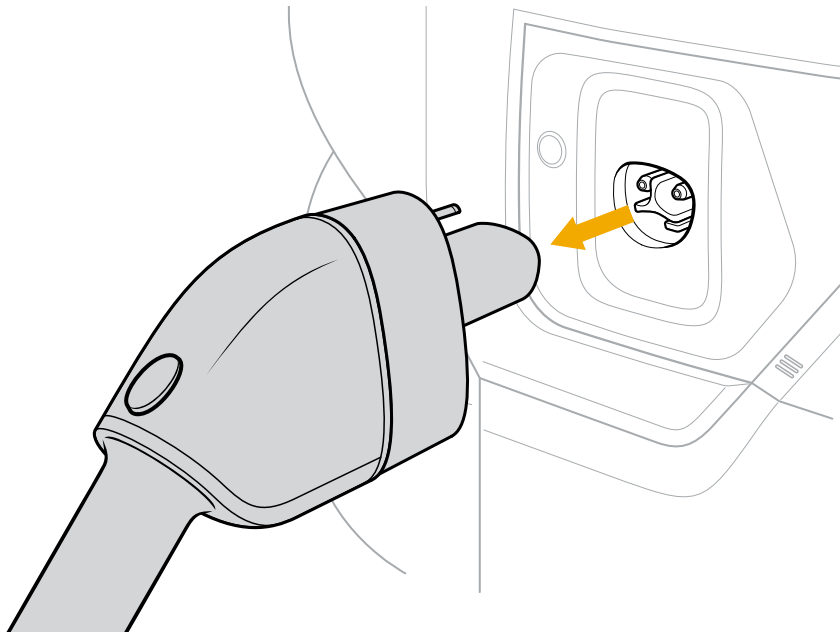


3. When charging is complete, stop the charge session.
  - a. Unlock the vehicle.
  - b. Press the stop charge button or choose **Stop Charging** on the center display or in the mobile app.
  - c. Remove the charge plug with adapter from the vehicle.



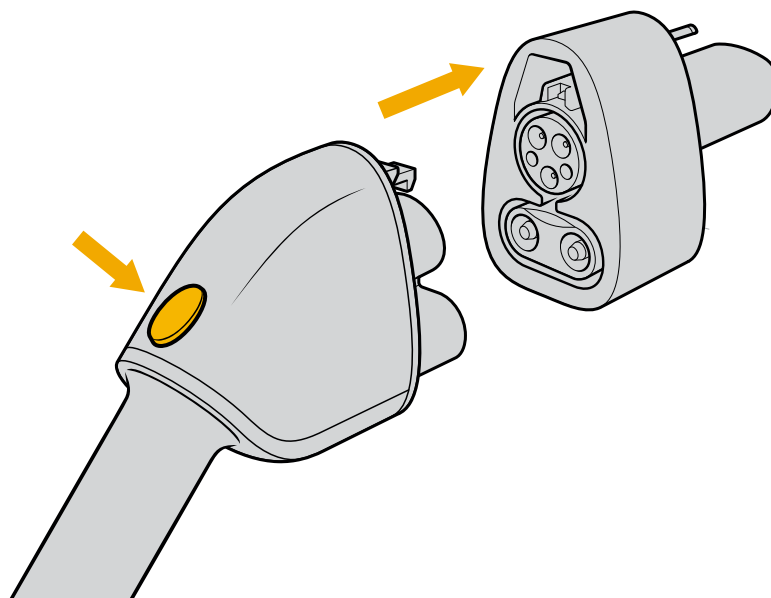
**DANGER**

- Don't attempt to remove the charge plug with adapter from the vehicle charge port without first ending the charge session.
- Don't attempt to remove the charge plug from the adapter while it's plugged into the vehicle.





4. Press the button on top of the charge plug and remove the adapter from the plug.



5. Store the adapter in the vehicle.

# Specifications

Specification	Description
Product part number	PT01559108
Product type	CCS1 DC charging adapter for NACS vehicles
Compatibility	CCS1 DC chargers
Rate voltage	1,000 V
Operating temperature	-22°F (-30°C) to 122°F (50°C)
Storage temperature	-40°F (-40°C) to 185°F (85°C)
Protection degree	IP67 unmated, IP55 mated
Standard reference	UL2252, SAE J3400, IEC 62196.3-2022

## Troubleshooting

If a charging error occurs, check the vehicle center display, the Rivian mobile app, and the display on the charger for information and guidance.

# Customer Service

Still need help? Connect with us.

## RIVIAN

### Customer Engagement Center

---

(888) RIVIAN1 / (888) 748-4261  
[rivian.com/support/contact](https://rivian.com/support/contact)

### Insurance

---

(888) RIVIAN8 / (888) 748-4268

### Roadside Assistance 24/7

---

(844) RIVIAN4 / (844) 748-4264

### Service 24/7

---

(855) RIVIAN5 / (855) 748-4265  
[rivian.com/support/service](https://rivian.com/support/service)