

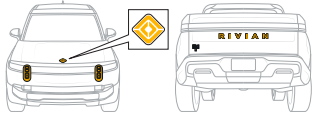
	Airbag		Low-voltage battery (lead-acid)		Gas strut / preloaded spring		High strength zone
	High-voltage power cable		High-voltage battery (Li-ion)		Seat belt pretensioner		SRS control unit
	Cable cut location						

1 Identification / recognition

The Rivian R1T has the following identifying characteristics.

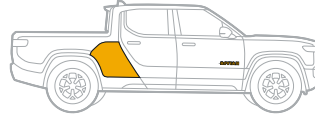
Front

- Rivian Compass logo hood ornament
- Stadium headlights



Side

- Rivian name on front door
- Gear Tunnel



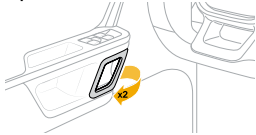
Rear

- Rivian name and model on the tailgate

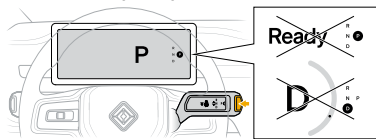
2 Immobilisation / stabilization / lifting



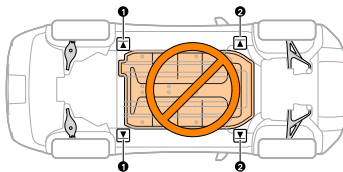
1. Chock the wheels.
2. Open the driver or curbside door. [Model Year 2022-24 left, Model Year 2025-26 right]



3. Shift into **P** (Park).



4. Use safe lift points.



IMPORTANT

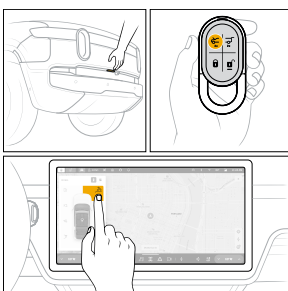
Do not use jacks or lifting equipment such as airbags under the battery pack.

Item	Description
1	Rear jack location (frame rail)
2	Front jack location (frame rail)

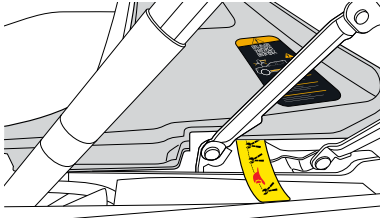
3 Disable direct hazards / safety regulations



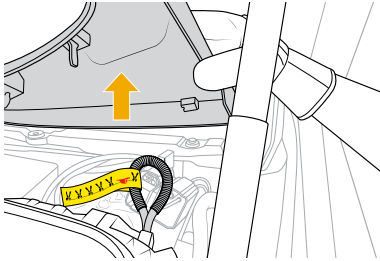
1. Open the hood using the key fob, phone, button above the grille, or the Open Hood button on the center display.



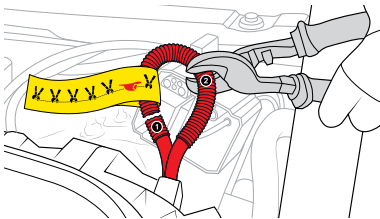
2. Use a Halligan bar or hydraulic spreader to pry open the hood if these methods aren't available.
3. Find the yellow cut tag under the air intake cover.



4. Pull up the air intake cover.



5. Cut the loop on both sides of the yellow tag.

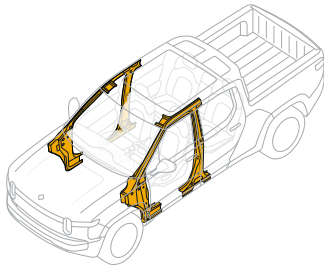


6. Wait one minute.

4 Access to the occupants



The highlighted areas contain high-strength steel. Use a hydraulic cutter and wear personal protective equipment, being careful not to damage the high-voltage battery.



The windshield, roof glass, and front door glass are laminated. The other windows are tempered.

5 Stored energy / liquids / gases / solids

12 V



Li-ion
450 V



6 In case of fire



- Wear proper personal protective equipment (PPE).
- Use a fog pattern to approach the vehicle and extinguish the interior.
- Use a thermal imaging camera (TIC) or infrared (IR) to monitor the battery temperature.
- Do not cut the battery or cables.



WARNING

Lithium-ion batteries can self-ignite or reignite.

7 In case of submersion

- Remove a submerged vehicle from water before deactivating or towing it.
- Wear appropriate personal protective equipment (PPE).
- There is no increased risk of electrocution from immersion in water.

8 Towing / transportation / storage

- Use only a flatbed truck.
- Use the tow truck winch.
- Be sure the Park brake is on.
- Store the vehicle at least 50 ft (15 m) away from other vehicles and structures.



WARNING

Fire hazard. Towing Rivian vehicles with any wheels on the ground can lead to significant damage and overheating. Extreme overheating can cause a fire.

9 Important Additional Information

N/A

10 Explanation of pictograms used

	Lifting points		Remove smart key		Cable cut location		
	LV Battery (12 V)		HV Battery Li-ion (450 V)		HV component		Electric vehicle
	Flammable		Corrosives		Hazardous to human health		Danger to the environment
	Warning, high voltage		Use plenty of water to extinguish the fire		Hood		High strength zone