



R1S Cargo Divider Guide



RIVIAN

© 2025 Rivian Automotive, LLC. All rights reserved.

All information in this document and all Rivian software is subject to copyright and other intellectual property rights of Rivian Automotive, LLC, its affiliates, or its licensors. This material may not be modified, reproduced, or copied, in whole or in part, without the prior written permission of Rivian Automotive, LLC, its affiliates, or its licensors. Unless indicated otherwise, all trademarks are owned and registered by Rivian Automotive, LLC, its affiliates, or its licensors in the United States and/or other countries. Please visit <https://www.rivian.com/legal/brand> for Rivian's trademarks and service marks.

The images provided in this document are for illustrative purposes only. Depending on the product details and market region, the information in this document may appear slightly different from your product.

Contents

Symbols Used in This Guide	4
About the Cargo Divider	5
Install the Cargo Divider	5
Remove the Cargo Divider	9
Adventure Gear Limited Warranty	9
Customer Service	10

Symbols Used in This Guide

The following are the meanings of symbols used in this guide:



CAUTION

Risk of

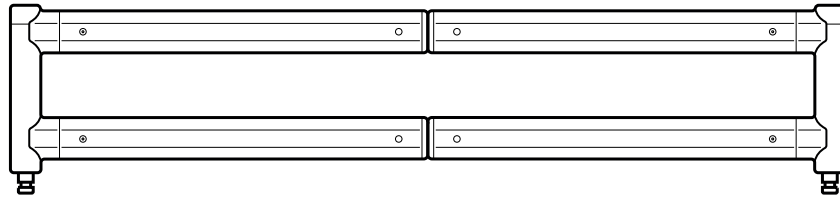
- damage to vehicle or property
- voiding warranty

IMPORTANT

Instructions to successfully complete a task

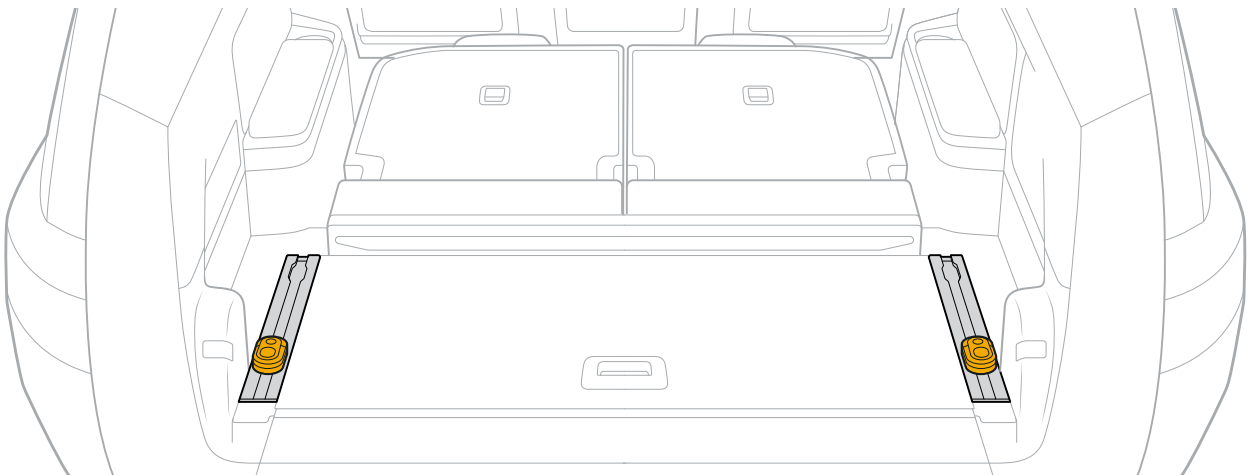
About the Cargo Divider

The cargo divider is an optional, adjustable accessory designed for R1S vehicles equipped with cargo tie-downs and rails. Use the divider to organize and secure your items within the cargo area.



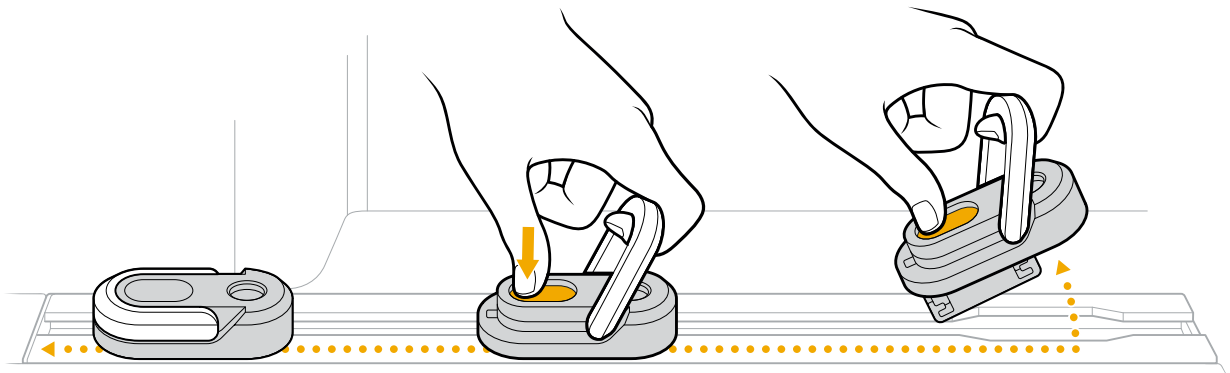
Install the Cargo Divider

1. Ensure your vehicle's cargo area is equipped with cargo tie-downs and rails.



2. Remove the cargo tie-downs from the rails:

- Lift the hook on each cargo tie-down, and then press down on the black button to move it forward or backward.
- Slide the tie-down all the way toward the front of the vehicle to remove it from the rail.

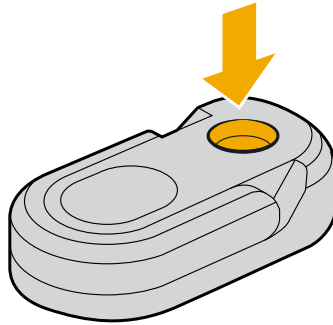




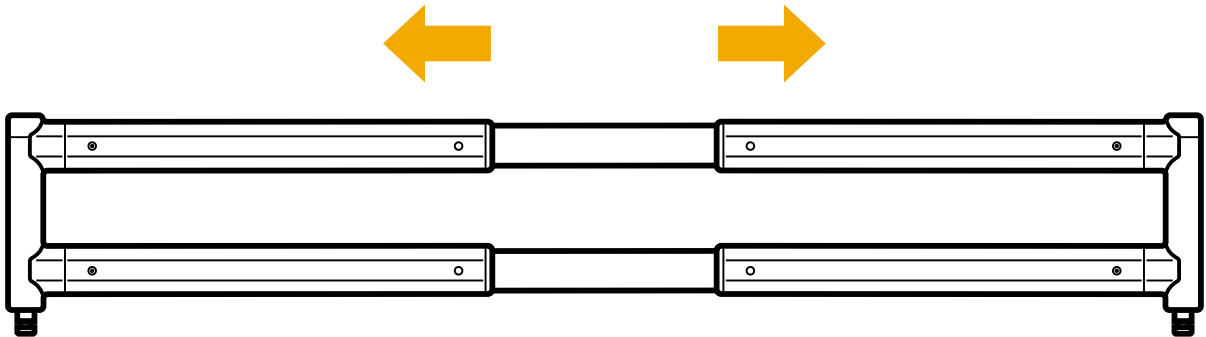
3. Inspect the divots for any obstructions or debris. Turn the cargo tie-downs upside down or use compressed air to clean the divots, if needed.

**CAUTION**

Debris in the divot can cause the cargo divider to become stuck.



4. Reattach the cargo tie-downs to the rails.
5. Pull the cargo divider legs outward to extend the divider.

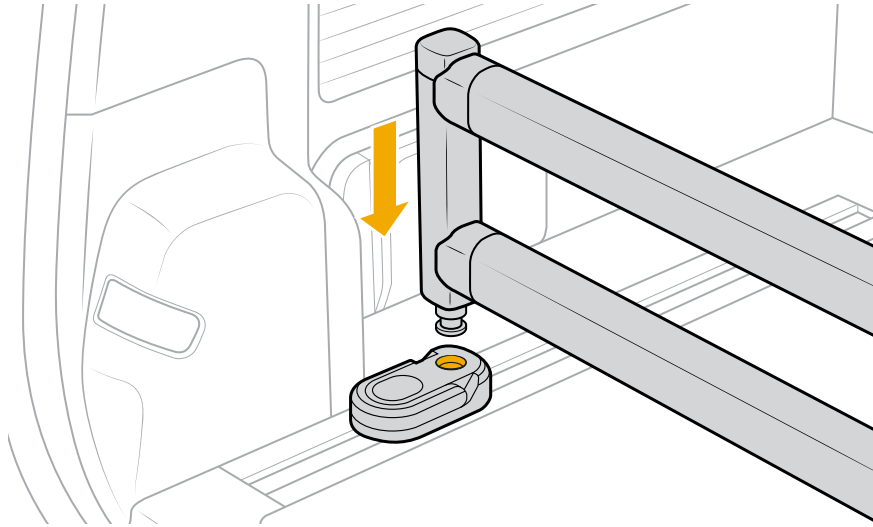




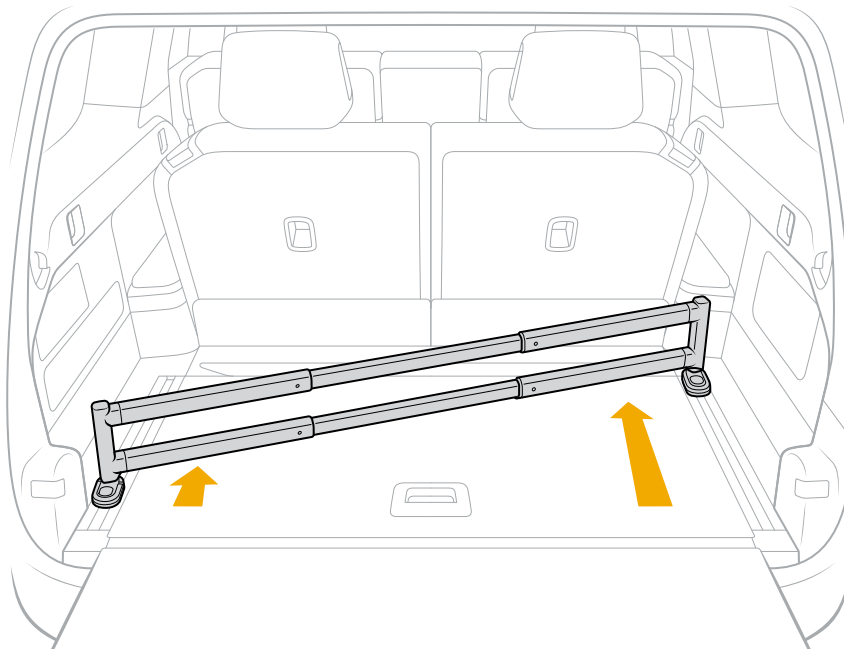
6. Gently push the cargo divider legs into the cargo tie-down divots. Listen for an audible click.

IMPORTANT

If you don't hear a click, the cargo divider may not be latched. Repeat the installation process until you hear a click.



7. Move the cargo tie-downs along the rails to reposition the cargo divider. Lift the hook on each cargo tie-down, and then press down on the black button to move it forward or backward.





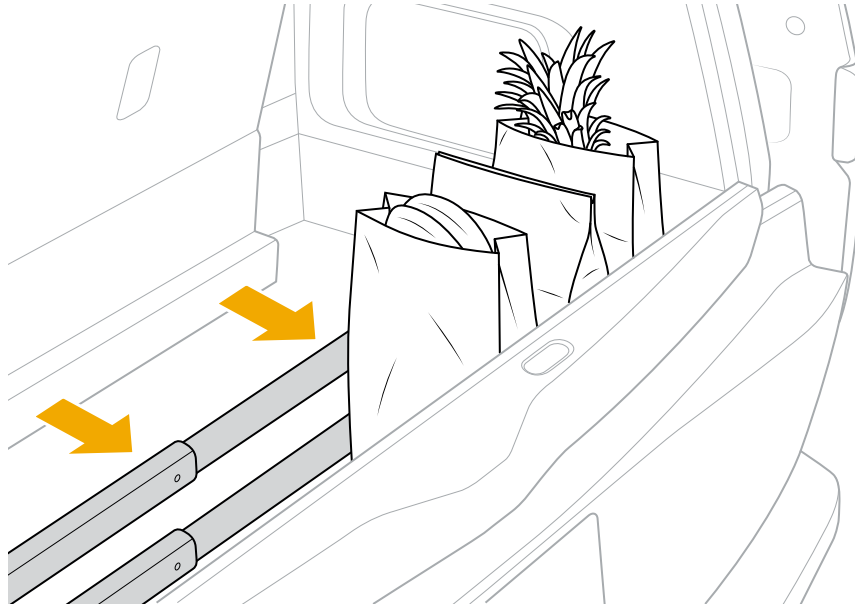
8. Load your cargo into the cargo area.



CAUTION

Don't exceed the cargo divider's suggested weight limit of 44 lbs (20 kgs).

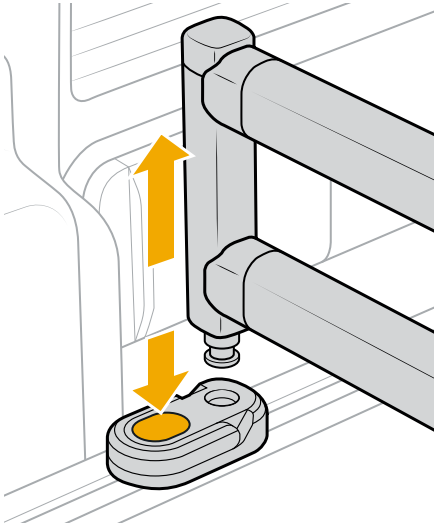
9. Push the cargo divider flush against your items to keep them secure while driving.



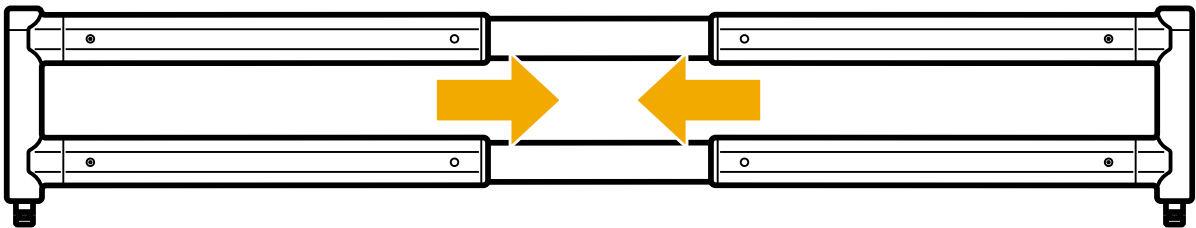
10. Gently push and pull on the cargo divider to confirm that it is securely locked in place.

Remove the Cargo Divider

1. Press the cargo tie-down buttons while pulling upward on each cargo divider leg.



2. Push the cargo divider legs inward to collapse the divider.



3. Store in a dry environment.

Adventure Gear Limited Warranty

Refer to the [Adventure Gear Limited Warranty Guide](#) for warranty information.

Customer Service

Still need help? Connect with us.

RIVIAN

Customer Engagement Center

(888) RIVIAN1 / (888) 748-4261

rivian.com/support/contact