

SLEEPWALKER

Occlusions

Video Treatment | 4.22.21



SLEEPWALKER LYRICS

You call me on the phone,
its been so long
I couldn't see how far you'd gone,
Under... (2x)

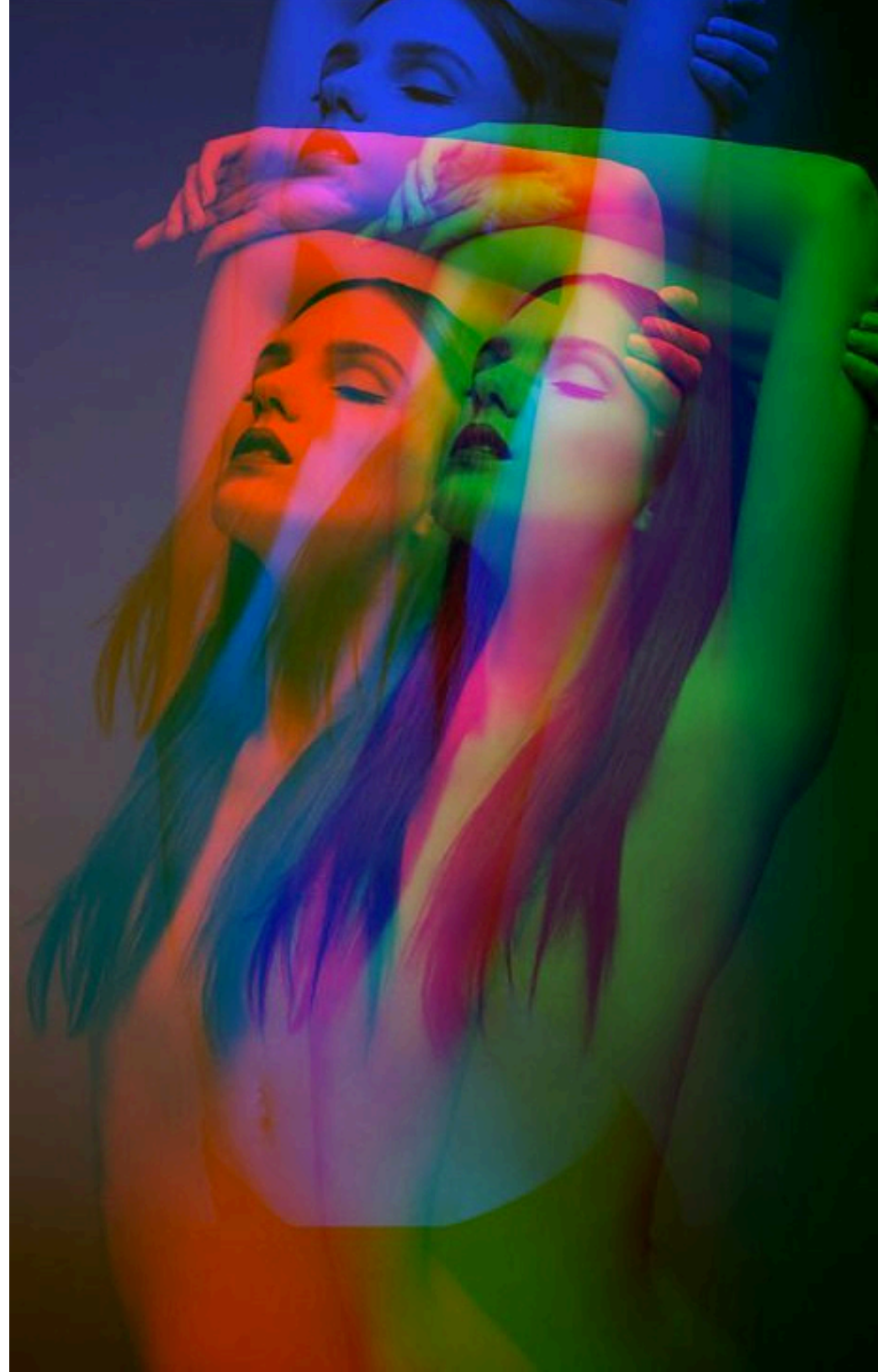
I miss you
But I don't recognize you
Where did you go? Ohh
Sleepwalker, Sleepwalker

Remember when we were kids,
on the floor in your studio
play me your favorite song
I love you until it stung

I miss you
But I don't recognize you
Where did you go? Ohh

I miss you
But I don't recognize you
Where did you go? Ohh

Sleepwalker, Sleepwalker (x8)





SUMMARY NOTES

Sleepwalker is about losing an old friend. After drifting apart over a few years, I reconnected with him only to find out that he had become addicted to heroin. Sleepwalker is a term for an addict. We tried to rekindle our friendship, but it was wrought with distrust. The drugs made him paranoid and angry, and sometimes he directed that anger toward me. I cared about him and wanted so badly for the friendship to work because of the deep connection we once had. But he hurt me emotionally and in the end I had to let him go and love from afar. This song is about wrestling with that conflict and sadness.

-Leigh, Occlusions

Color schemes:

Yellow (R313)

Cyan (R4390)

Red (R27)

Shots:

Singing

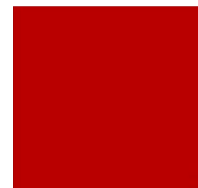
Sitting in folding chair

Wide shot of black void/or mirrors

On the Floor with Blanket

VFX:

- Heavy Use of Colored Gels
- In-camera glass distortion
- Cross fade and overlays of shots (in post)



PRODUCTION PERSONNEL

Director: Leigh Thomas (they/them)
DP+Producer+Editor: L.Fried (she/they)
Co-DP + Cam Op: Jordan Martinez (he/him)
Grip/Gaffer: L & Bri Patin (they/them)
PA: Milena Mills (she/her)

Location: Youngstown Movement Studio

Gear Rental:

Blanket Fort Films

- Lighting Gear:
 - Arri Tungsten kit
 - LED panels (x2)
 - Dimmer
- AC kit (including aluminum riser)
- Tripod, Dolly

Northwest Film Forum

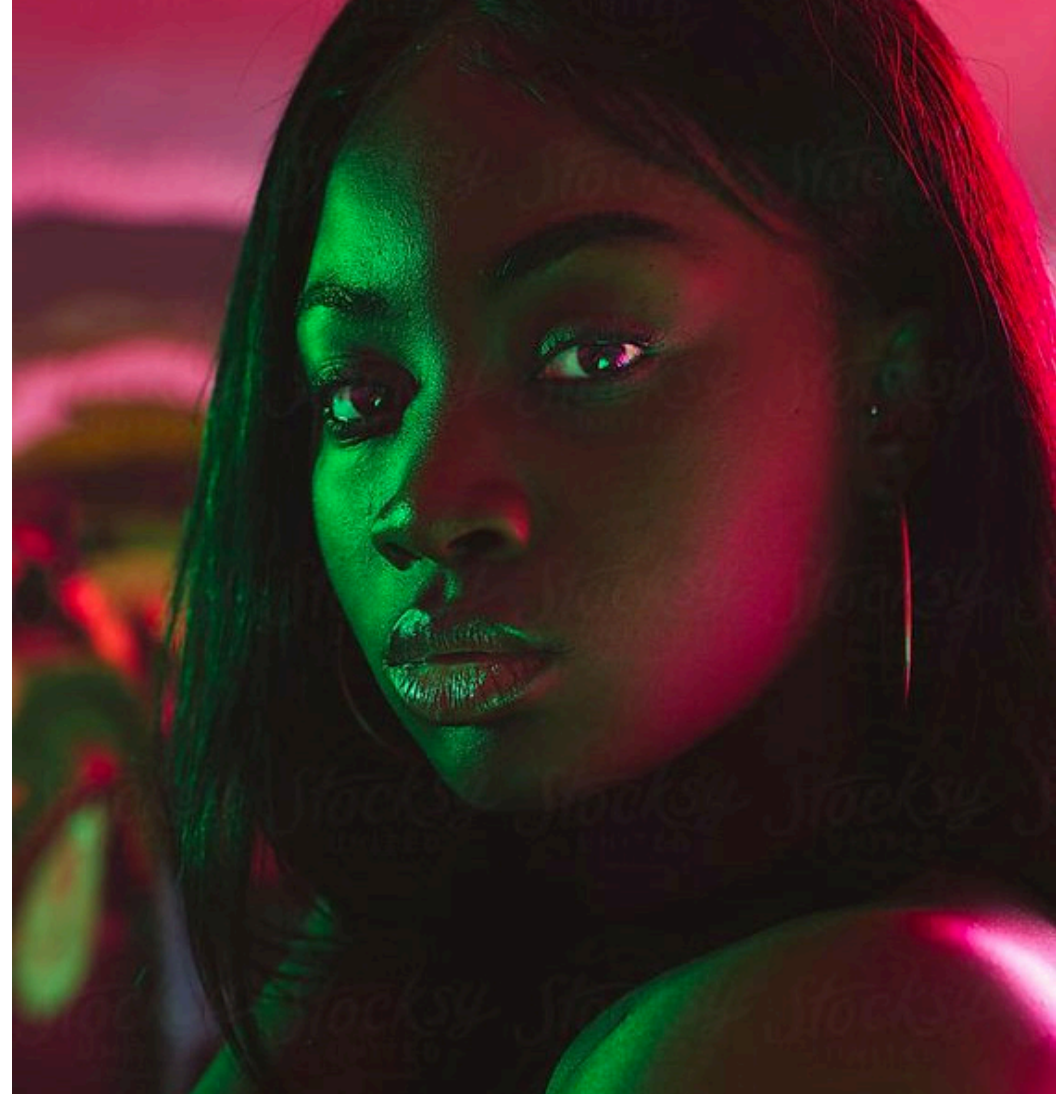
- Black Curtain & Clamps

Glazers

- Camera

Transportation for Day-of shoot:

Milena will pick up gear from L's apt and transport it to Youngstown. Leigh will then scoop Jordan, L & Bri to meet at Youngstown. Virtually same will be done on the return trip, except gear will be dropped at NWFF instead of L's, and L will meet Milena for the unload and return gear to Blanket Fort & NWFF (all at 1515 12th Ave).



CINEMATOGRAPHY

Two camera set up:

A-Cam: 35mm, 50mm

B-Cam: 18-35mm, 50mm (supplementary shots)

Standard fullframe (16:9), 24FPS

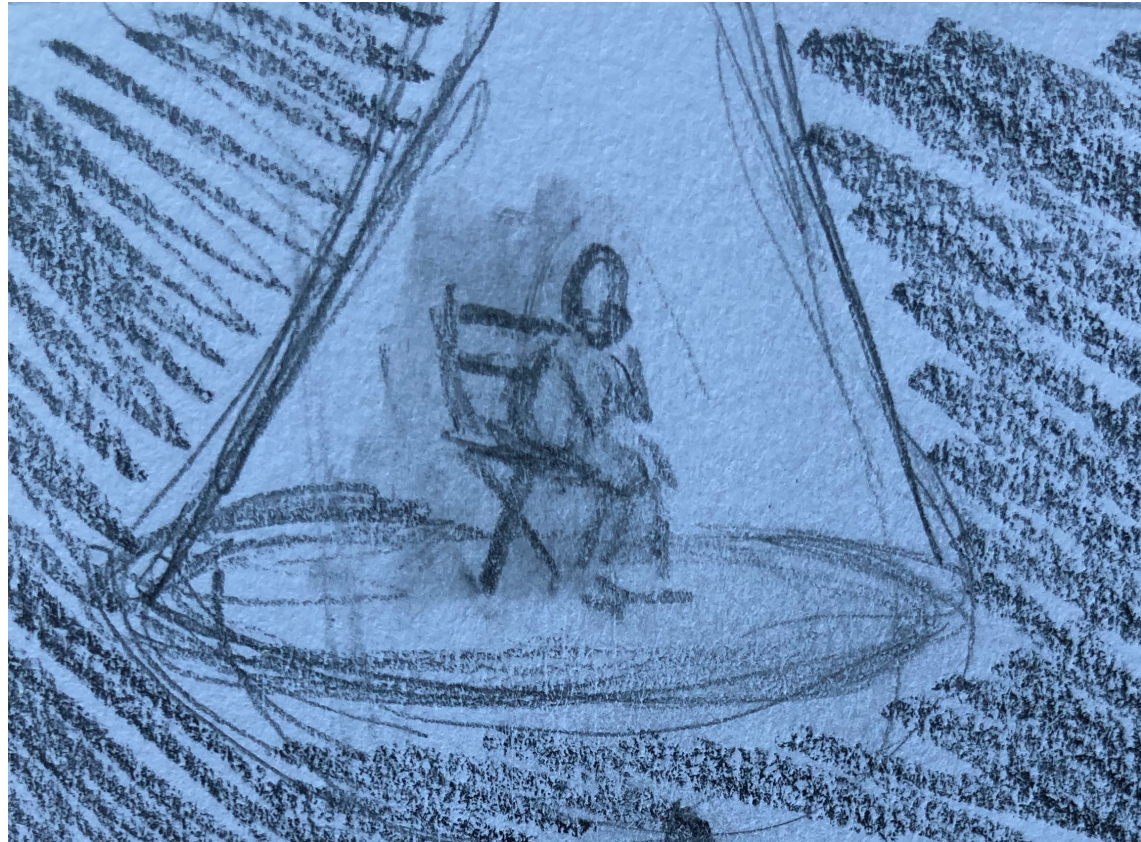
Scenes will be broken down into Lighting Set Ups, because all will take place in what we're calling the **Black Void**, might be utilizing mirror that is in the location we're shooting

Scene 1: Chair (Yellow)

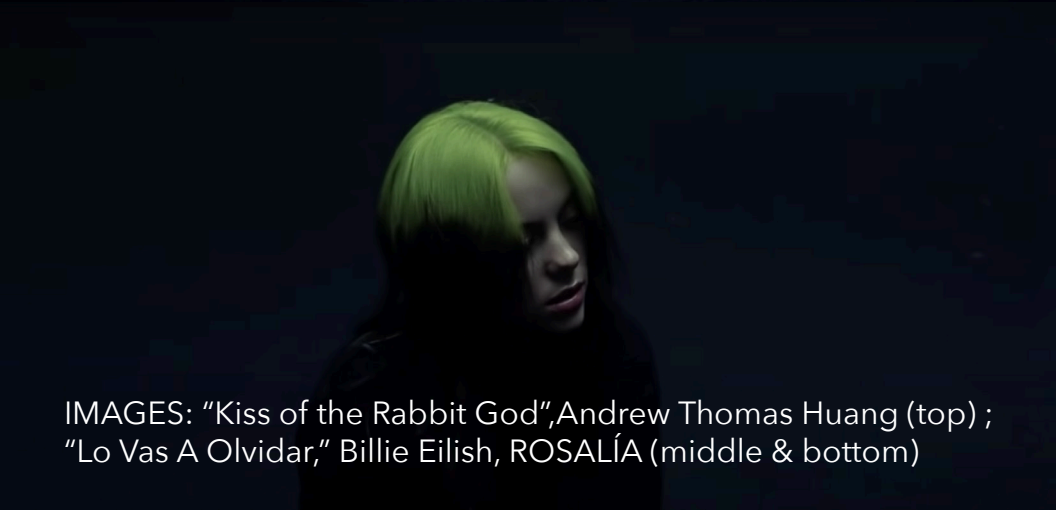
Scene 2: Walking & Mirror (Blue)

Scene 3: Silhouette (various)

Scene 4: Floor (Red)

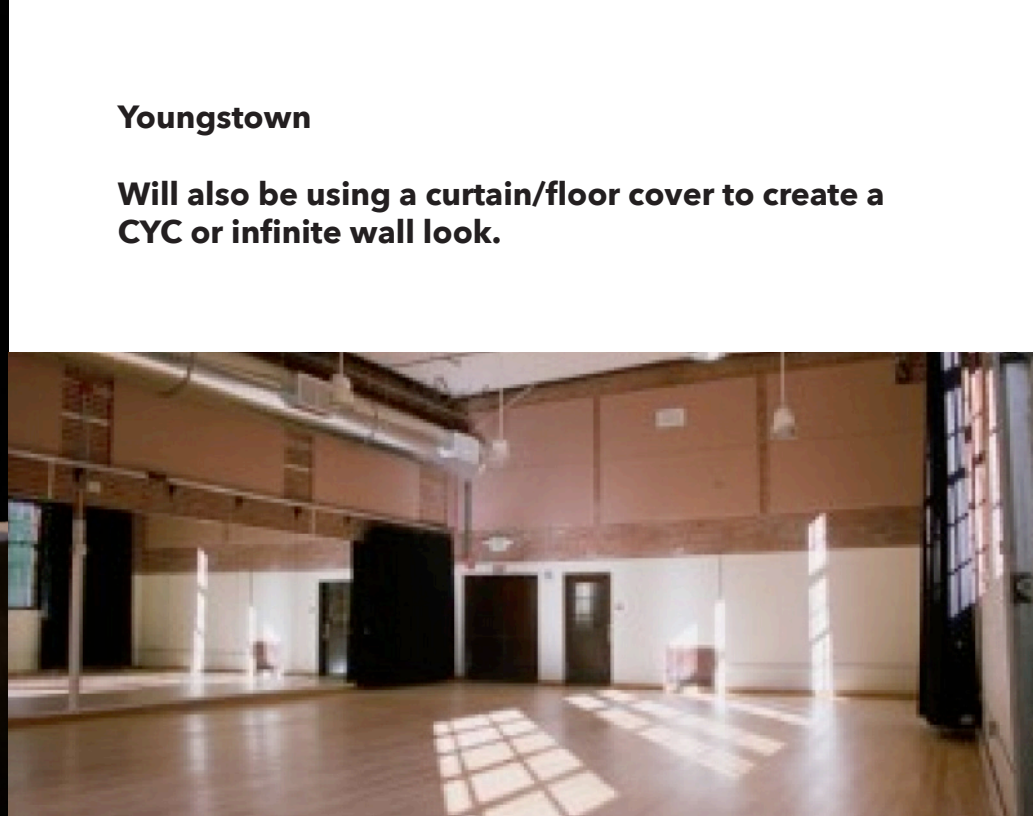


CINEMATOGRAPHIC INSPIRATION



IMAGES: "Kiss of the Rabbit God", Andrew Thomas Huang (top) ;
"Lo Vas A Olvidar," Billie Eilish, ROSALÍA (middle & bottom)

SHOOTING LOCATION



Youngstown

Will also be using a curtain/floor cover to create a CYC or infinite wall look.

STYLING

