



Las Vegas • McCarran International Airport

NEWS RELEASE

Clark County Department of Aviation - Randall H. Walker, Director

CONTACT: CHRIS JONES
PUBLIC INFORMATION ADMINISTRATOR

FOR IMMEDIATE RELEASE
Sept. 19, 2010

(702) 261-5290

MEDIA ADVISORY

Airport Bypass detour to conclude Monday morning

An Airport Bypass detour that has been in effect since late April will be removed early Monday morning. The change will allow northbound, non-airport traffic to again utilize a wider, two-lane roadway while making its way toward Russell Road, Tropicana Avenue or other points north of the Airport Connector Tunnel. **(See attached map.)**

A detour that forced non-airport drivers to pass through a traffic signal-controlled intersection at Flight Path Avenue was implemented in the spring to provide contractors space to work on new bridges that will eventually connect the tunnel to McCarran International Airport's Terminal 3, slated to open in mid-2012. Work on the new bridges has reached a point where the original Bypass lanes can be reopened for public use.

However, the northbound tunnel will remain in its current two-lane configuration for another several weeks to allow workers to complete additional repairs and improvements within the tunnel.

Non-airport drivers are strongly encouraged to become familiar with, and utilize, the reopened Airport Bypass lanes located toward the right (east) side of tunnel. Later this week, these dedicated Airport Bypass lanes will become the only means for northbound tunnel traffic to directly reach Russell or Tropicana without first entering the airport's roadway system.

###

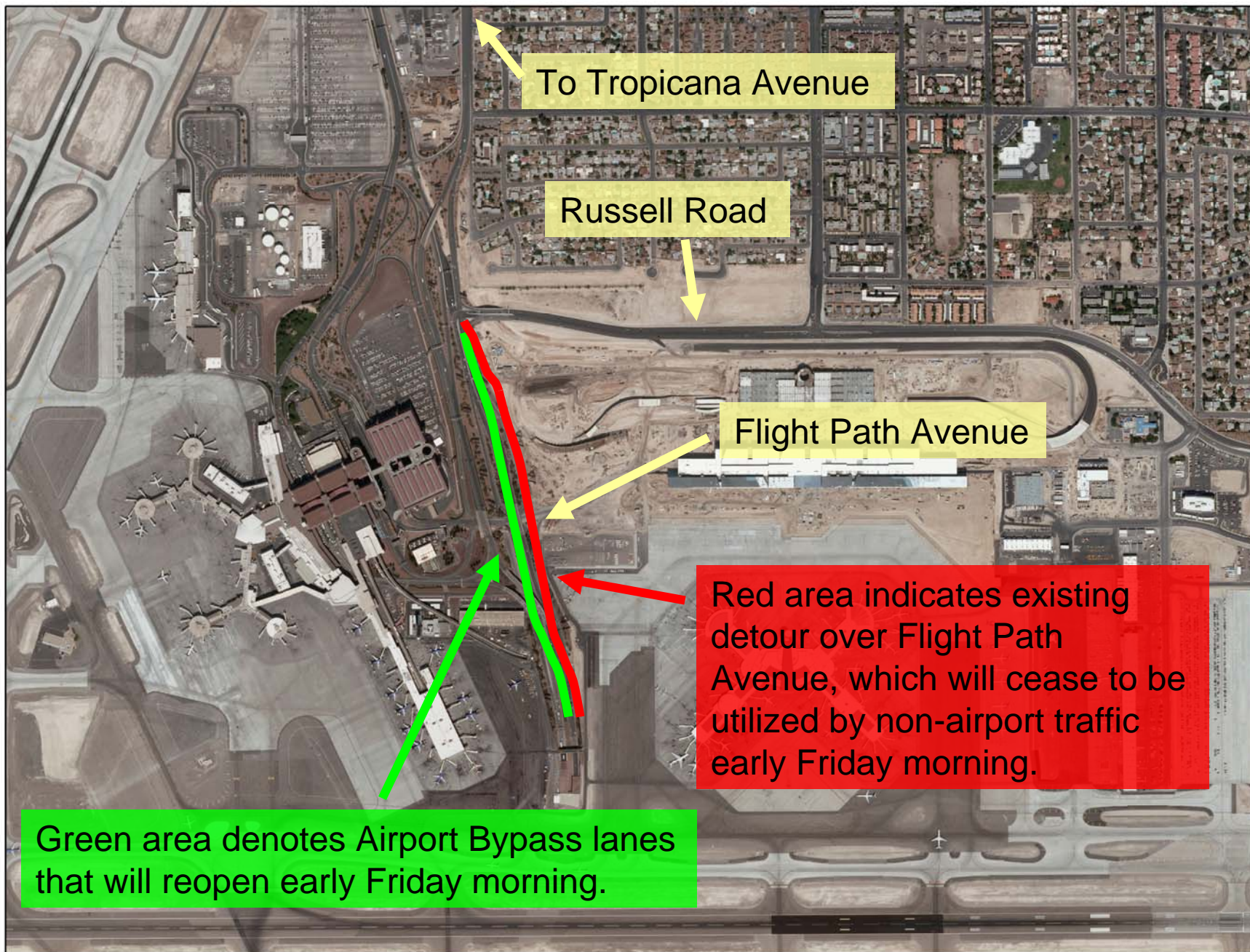


P.O. Box 11005 • Las Vegas, NV 89111-1005 • 702-261-3094 • Fax 702-261-5645

E-Mail: webmaster2@mccarran.com

Follow us on Twitter: [Twitter.com/LASAirport](https://twitter.com/LASAirport)

Become a Fan on Facebook: [Facebook.com/LASAirport](https://facebook.com/LASAirport)



To Tropicana Avenue

Russell Road

Flight Path Avenue

Red area indicates existing detour over Flight Path Avenue, which will cease to be utilized by non-airport traffic early Friday morning.

Green area denotes Airport Bypass lanes that will reopen early Friday morning.