



BRYANSTON SQUARE, MARYLEBONE
£7,400 per month*

Carter Jonas

BRYANSTON SQUARE, MARYLEBONE, LONDON, W1H 2DT

- 1 Reception Room
- Fitted Kitchen
- 2 Bedrooms
- 2 Bathrooms
- 3rd Floor with Lift
- Unfurnished or furnished at additional cost.

LOCATION

Bryanston Square is a short walk from Marylebone High Street, as well as Marble Arch and Baker Street Stations, and is an ideal location for all the West End's world-class amenities. Hyde Park's beautiful open spaces are also a short walk away (approximately 0.4 miles).

THE PROPERTY

With wood flooring throughout, the apartment comprises a spacious reception room leading to a fully fitted eat-in kitchen.

The property benefits from an exceptionally bright master bedroom with excellent storage and open west facing views. There is a second double bedroom with ensuite shower room and second bathroom.

Available for long term rental on an unfurnished basis or furnished by separate negotiation.

Holding deposit is 1 week's rent

Security deposit is 6 week's rent

Minimum term 12 months

Council Tax Band F

Residents of Westminster housing estates may also request a resident permit for zones A – G. For eligibility for resident parking permits, please refer to the <https://www.westminster.gov.uk/parking> website for further details.

This superb apartment is finished throughout to a very high standard and enjoys lovely views overlooking the pretty gardens of Bryanston Square.



Marylebone still looks and feels something like the village it was 400 years ago and the handsome Georgian development it was 250 years ago. Its High Street is a pleasure to visit; the atmosphere is a bit more cosmopolitan than other parts of the city, and at the same time, a little more relaxed. A pristine haven a short walk from Oxford Circus filled with squares of tall, beautifully proportioned Georgian houses.

ADDITIONAL INFORMATION

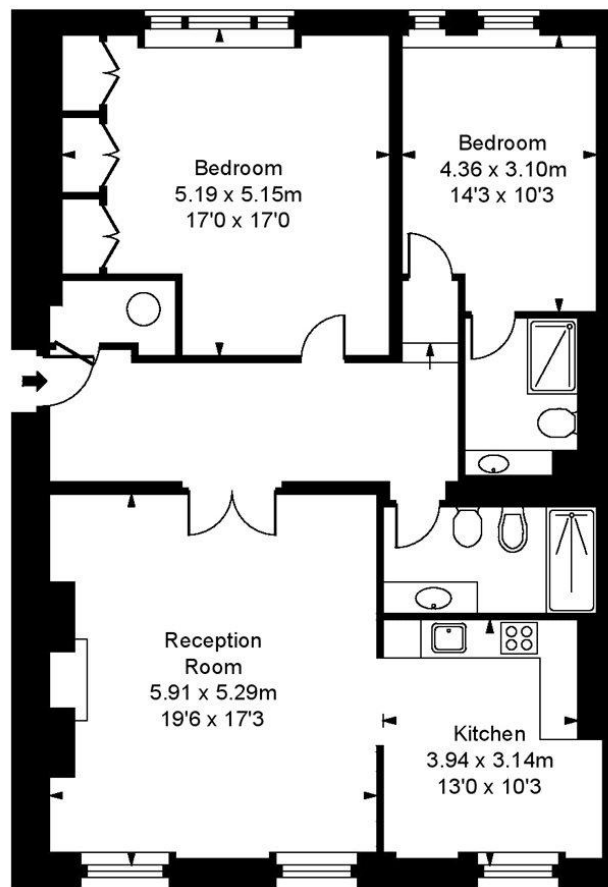
Offers	Available for a minimum term of 12 months longer terms will be considered
Viewing	Strictly by appointment
Local Authority	Westminster City Council - Council Tax Band F





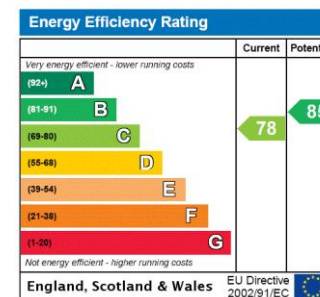
Flat 5, Bryanston Square, W1H

Approximate Gross Internal Area
113.99 sq m / 1,227 sq ft



Third Floor

ILLUSTRATION FOR IDENTIFICATION PURPOSES ONLY
ALL MEASUREMENTS ARE MAXIMUM, AND INCLUDE WINDOW BAYS AND WARDROBES WHERE APPLICABLE
THIS PLAN MUST NOT BE REPRODUCED BY ANY OTHER PERSON WITHOUT PERMISSION



T: 020 7486 8866

37 New Cavendish Street, London, W1G 9TL

E: marylebone@carterjonas.co.uk

A member of



Exclusive UK affiliate of

CHRISTIE'S
INTERNATIONAL REAL ESTATE

IMPORTANT INFORMATION

These particulars are for general information purposes only and do not represent an offer or contract or part of one. Carter Jonas or anyone in their employment has made every attempt to ensure that the particulars and other information provided are as accurate as possible and they are not intended to amount to advice on which you should rely as being factually accurate. Full information which may be relevant to your decision regarding the property can be found on the property listing on carterjonas.co.uk or a separately available material information sheet, and we would advise you to confirm the details of any material information prior to any offer being submitted. You should not assume that the property has all necessary planning, building regulations or other consents and Carter Jonas has not tested any services, facilities, or equipment. Any measurements and distances given are approximate only. Where Carter Jonas has been provided with a floorplan by a third party, we cannot guarantee that the floorplan has been measured in accordance with IPMS. Purchasers or prospective tenants must satisfy themselves of all of the aforementioned by independent inspection or otherwise. Our images only represent part of the property as it appeared at the time they were taken and do not represent the furnishings included; these are confirmed in a separate inventory. If you require further information, please contact us. *Administration fees may apply depending on tenancy type. Please contact your local branch for this information.