



**GLOUCESTER PLACE MEWS, MARYLEBONE, W1U**  
£995 per week\*

**Carter Jonas**



## GLOUCESTER PLACE MEWS, MARYLEBONE, LONDON, W1U 8BF

- 2 Bedroom mews house
- 1 Reception room
- 1 Bathroom
- Offered unfurnished (Furnished at additional cost)
- Garage
- Portman Estate

### THE PROPERTY

The mews house offers a spacious living area and open-plan kitchen. The property is situated minutes from Marble Arch Station, Hyde Park and the amenities of the West End.

The property is professionally managed by The Portman Estate.

Available for long term rental on an unfurnished basis, or furnished (at separate cost)

Complimentary membership to Portman Concierge.

Gloucester Place Mews is a charming and tranquil residential area located in the heart of London. This picturesque mews features elegant Georgian-style houses and cobblestone streets, offering a peaceful retreat from bustling city life. The lovely surroundings include nearby cafes, boutiques, and green spaces, making it a desirable place to live. Conveniently situated, Gloucester Place Mews is approximately a 10-minute walk from both Baker Street Station (0.5 miles) and Marylebone Station (0.4 miles), providing easy access to the Underground and National Rail services, connecting residents to various parts of London and beyond.

The Portman Estate's 110 acres of land within Marylebone, London W1, has a rich heritage dating back to the 16th century and is the setting for continual investment in premium residential properties, shops and independent businesses. The Portman Estate includes key places of architectural and historical interest along with a vibrant blend of shops, including Portman Village, restaurants, wine-bars, hotels and garden squares - a perfect mix of leisure opportunities for residents in the heart of London's West End.

## A lovely two-bedroom mews house in a quiet mews with private garage.





Holding deposit is 1 week's rent = £995 (at asking price)

Security deposit is 5 week's rent = £4,975 (at asking price £995pw)

Minimum Term 12 months

Council Tax Band F

For the latest information on broadband and mobile coverage, please visit [/checker.ofcom](https://www.checker.ofcom.gov.uk/) for the most up-to-date details.

---

## ADDITIONAL INFORMATION

---

Offers	Available for a minimum term of 12 months longer terms will be considered
--------	---

---

Viewing	Strictly by appointment
---------	-------------------------

---

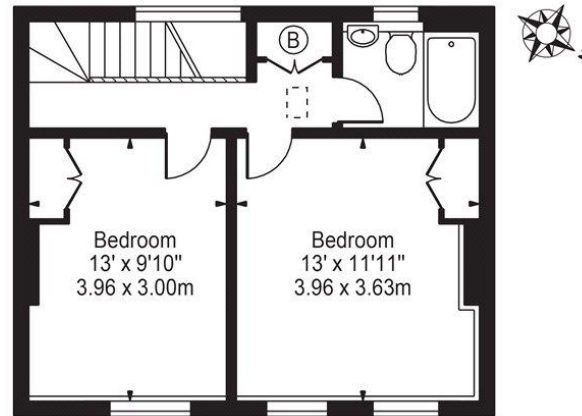
Local Authority	Westminster City Council - Council Tax Band F
-----------------	---

---

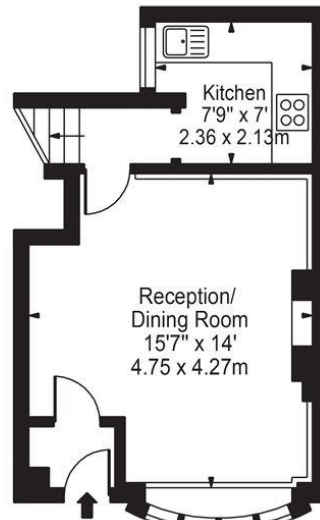


# Gloucester Place Mews, W1U

Approx. Gross Internal Area 712 Sq Ft - 66.15 Sq M



First Floor



Ground Floor

For Illustration Purposes Only - Not To Scale

Score	Energy rating	Current	Potential
92+	A		
81-91	B		90 B
69-80	C		
55-68	D	63 D	
39-54	E		
21-38	F		
1-20	G		

T: 020 7486 8866

37 New Cavendish Street, London, W1G 9TL

E: marylebone.lettings@carterjonas.co.uk

A member of



Exclusive UK affiliate of

**CHRISTIE'S**  
INTERNATIONAL REAL ESTATE

## IMPORTANT INFORMATION

These particulars are for general information purposes only and do not represent an offer or contract or part of one. Carter Jonas or anyone in their employment has made every attempt to ensure that the particulars and other information provided are as accurate as possible and they are not intended to amount to advice on which you should rely as being factually accurate. Full information which may be relevant to your decision regarding the property can be found on the property listing on [carterjonas.co.uk](http://carterjonas.co.uk) or a separately available material information sheet, and we would advise you to confirm the details of any material information prior to any offer being submitted. You should not assume that the property has all necessary planning, building regulations or other consents and Carter Jonas has not tested any services, facilities, or equipment. Any measurements and distances given are approximate only. Where Carter Jonas has been provided with a floorplan by a third party, we cannot guarantee that the floorplan has been measured in accordance with IPMS. Purchasers or prospective tenants must satisfy themselves of all of the aforementioned by independent inspection or otherwise. Our images only represent part of the property as it appeared at the time they were taken and do not represent the furnishings included; these are confirmed in a separate inventory. If you require further information, please contact us. \*Administration fees may apply depending on tenancy type. Please contact your local branch for this information.