



3 ARUNDEL WING TORTINGTON MANOR ARUNDEL BN18 0FG

Three bedrooms, two bathrooms & two receptions
Communal grounds c.16 acres
Use of tennis court
Private parking & garage

DESCRIPTION

Entrance into a study with range of office furniture, including desk, drawers, cabinets, and storage units.

Kitchen/dining room with range of cabinets finished in white with sink, electric hob, integrated washing machine, dishwasher, fridge freezer, oven, and microwave. Breakfast bar island, and space for dining table with French doors onto rear garden. Cloakroom.

On the first floor a well balanced sitting room comprising central fireplace with contemporary stone surround, with an inset electric fire. Windows overlooking countryside to rear.

Bedroom with built-in bedroom furniture, including wardrobes and drawers. House bathroom comprising shower enclosure, vanity cabinet with sink, toilet with concealed cistern.

The second floor houses the principal bedroom suite with a range of bedroom furniture to include wardrobes, dressing table and drawers. Twin windows overlooking countryside to the rear. Ensuite comprising double shower enclosure, wash basin encased in vanity unit and toilet. The third bedroom/dressing room is a double room with built-in wardrobes.

OUTSIDE

Parking to front of property. The rear garden has a decked area, gravel garden area with borders, and opens onto communal grounds with views. Private garage in a block.

A WELL PRESENTED TOWNHOUSE LOCATED WITHIN THE GROUNDS OF TORTINGTON MANOR WITH EXCEPTIONAL VIEWS AND ACCESS TO 16 ACRES OF COMMUNAL GROUNDS WITH TENNIS COURTS. LOCATED WITHIN REACH OF FORD RAILWAY STATION AND THE A27



FURTHER INFORMATION

EPC rating D

Council tax band F

Mains gas, electricity, water and drainage.

Internet & mobile: further information on availability and speeds can be found at checker.ofcom.org.uk which states ultrafast broadband is available and mobile coverage is good outdoor and variable indoor.

Lease: 999 years from 29 September 2000

Estate & block service charges 2026: £17,250

Peppercorn rent

AGENT'S NOTE

Brochure prepared 2025, photos taken 2020.

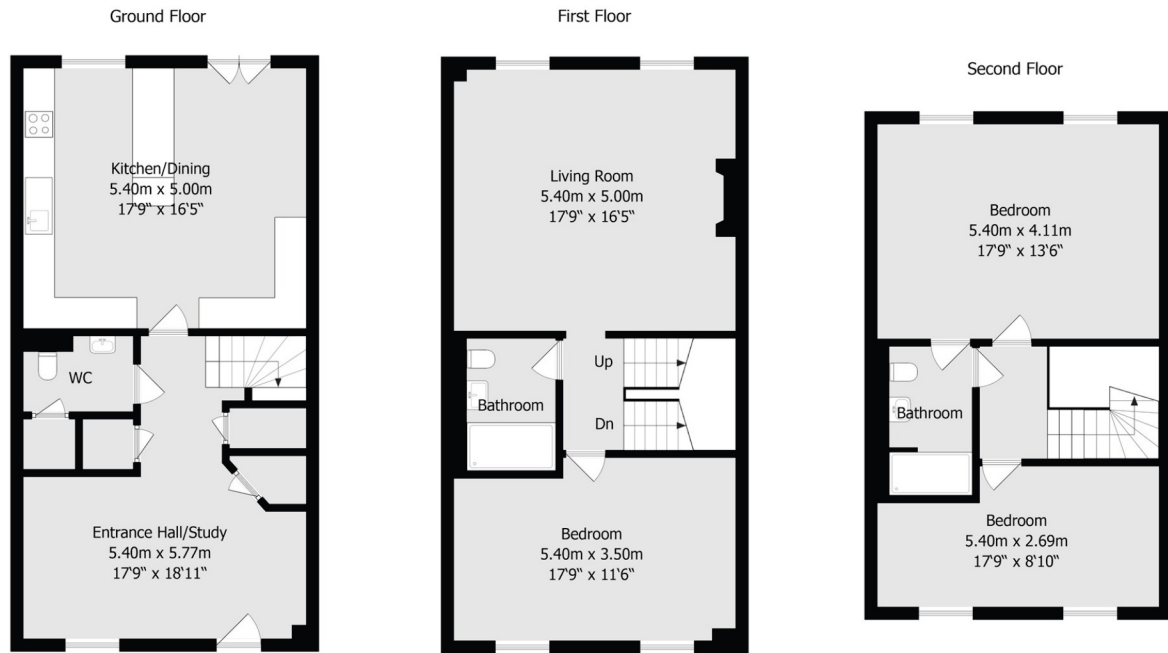
ADDITIONAL INFORMATION

Viewing: Strictly by appointment through the selling agents Carter Jonas - T: 01865 511444

Directions: BN18 0FG

what3words:/// frown.choppers.jetted





Approximate gross internal floor area 168.3 sq m/ 1812 sq ft

Whilst every care has been taken to ensure accuracy, dimensions are approximate and for illustrative purposes only.

Created by Property Photograph UK for Carter Jonas. All rights reserved.



Score	Energy rating	Current	Potential
92+	A		
81-91	B		
69-80	C		77 C
55-68	D	57 D	
39-54	E		
21-38	F		
1-20	G		

Oxford 01865 511444

oxford@carterjonas.co.uk

Mayfield House, 256 Banbury Road, Oxford. OX2 7DE

carterjonas.co.uk

Offices throughout the UK



IMPORTANT INFORMATION

These particulars are for general information purposes only and do not represent an offer or contract or part of one. Carter Jonas or anyone in their employment has made every attempt to ensure that the particulars and other information provided are as accurate as possible and they are not intended to amount to advice on which you should rely as being factually accurate. Full information which may be relevant to your decision regarding the property can be found on the property listing on carterjonas.co.uk or, (including off market properties) on the brochure or a separately available material information sheet. We would advise you to confirm the details of any material information prior to any offer being submitted. You should not assume that the property has all necessary planning, building regulations or other consents and Carter Jonas has not tested any services, facilities or equipment. Any measurements and distances given are approximate only. Where Carter Jonas has been provided with a floorplan by a third party, we cannot guarantee that the floorplan has been measured in accordance with IPMS. Purchasers must satisfy themselves of all of the aforementioned by independent inspection or otherwise. Our images only represent part of the property as it appeared at the time they were taken and do not represent the furnishings included; these are confirmed in a separate inventory. If you require further information, please contact us.