



RUGELEY

Guide Price £425,000

Carter Jonas

RUGELEY GORE END ROAD BALL HILL RG20 0PG

- Newbury town centre with mainline trains to London Paddington 5.1 miles.
- Excellent road access to both the A34 and M4 motorway
- Popular villages by attractive countryside

Entrance hall · kitchen · utility room · large sitting room · three bedrooms · bathroom · separate WC · single garage · private drive and front garden · good sized rear garden · Energy Rating C

SITUATION

Ball Hill is a small village just over the county border in North Hampshire. It is surrounded by attractive countryside yet is just a few minutes drive from the centre of Newbury with good access to the A34, which also gives speedy access to the M4 at junction 13. Newbury town offers a good selection of shops and supermarkets. There are plenty of restaurants, cafés, public houses and leisure facilities, including Newbury Racecourse, the attractive Kennet & Avon canal, Vue cinema, Corn Exchange and Watermill theatres. There are arts and sports centres, health and golf clubs, a bowls club, museums and an outdoor market on Thursdays and Saturdays. There are well regarded schools for all age groups and Newbury College, with its campus to the south of the town. There is excellent access to the major road routes of A34 and M4 and the mainline rail station to London (Paddington).

DESCRIPTION

Rugeley is one of a pair of semi-detached cottages situated in this attractive village location. The house offers good accommodation with a large double aspect sitting room with fireplace, a fitted kitchen and separate utility room. Upstairs there are three bedrooms, a family bathroom and a separate WC.

A THREE-BEDROOM SEMI-DETACHED VILLAGE HOUSE WITH A GOOD-SIZED GARDEN, IN A POPULAR VILLAGE LOCATION AND NO ONWARD CHAIN.



OUTSIDE

To the front of the property there is a private garden and drive providing off-road parking access to the single garage. Rear garden is a good size and is fence and laid to lawn.

ADDITIONAL INFORMATION

Tenure: Freehold

Services: Mains water, electricity, and drainage, oil fired central heating

Local Authority: Basingstoke & Deane Borough Council

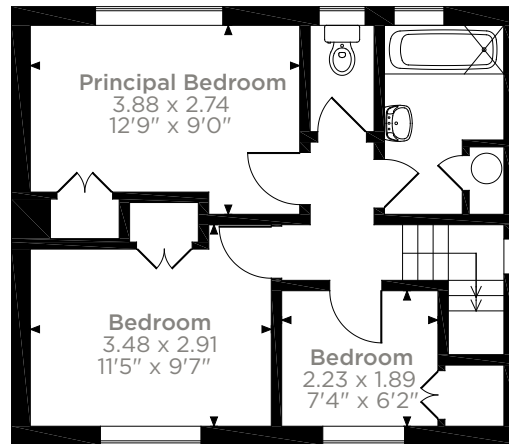
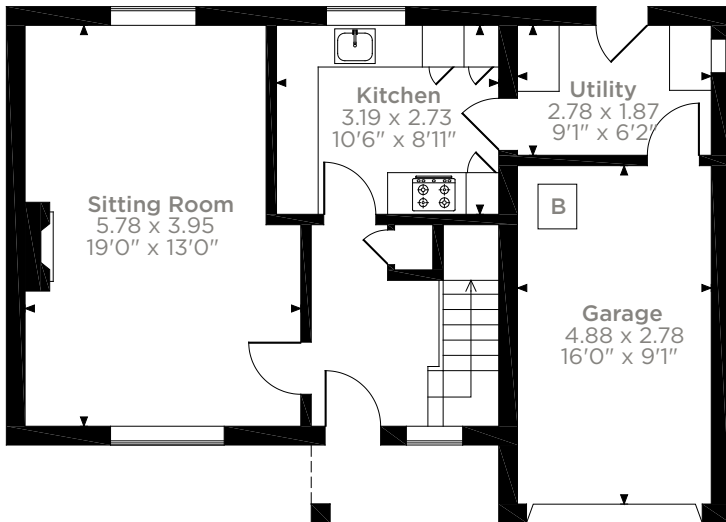
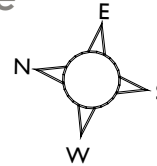
Council Tax: Band D

Viewing: By prior appointment through the Newbury office 01635 263010

Directions: Please use postcode RG20 0PG



Rugeley, Gore End Road, Newbury, Hampshire
 Approximate Gross Internal Area
 99 Sq M/1066 Sq Ft



Please note that the location of doors, windows and other items are approximate and this floorplan is to be used for illustrative purposes only. Unauthorized reproduction is prohibited.

Score	Energy rating	Current	Potential
92+	A		
81-91	B		
69-80	C	69 C	79 C
55-68	D		
39-54	E		
21-38	F		
1-20	G		

Newbury 01635 263000
 newbury@carterjonas.co.uk
 51 Northbrook Street, Newbury, RG14 1DT

carterjonas.co.uk
 Offices throughout the UK

Exclusive UK affiliate of

CHRISTIE'S
 INTERNATIONAL REAL ESTATE

IMPORTANT INFORMATION

These particulars are for general information purposes only and do not represent an offer of contract or part of one. Carter Jonas has made every attempt to ensure that the particulars and other information provided are as accurate as possible and are not intended to amount to advice on which you should rely as being factually accurate. You should not assume that the property has all necessary planning, building regulations or other consents and Carter Jonas have not tested any services, facilities or equipment. Any measurements and distances given are approximate only. Purchasers must satisfy themselves of all of the aforementioned by independent inspection or otherwise. Although we make reasonable efforts to update our information, neither Carter Jonas LLP nor anyone in its employment or acting on its behalf makes any representations warranties or guarantees, whether express or implied, in relation to the property, or that the content in these particulars is accurate, complete or up to date. Our images only represent part of the property as it appeared at the time they were taken. If you require further information please contact us.