



NIGHTINGALE AVENUE, CAMBRIDGE, CB1
GUIDE PRICE: £1,550,000

Carter Jonas

NIGHTINGALE AVENUE, CAMBRIDGE, CB1

Located on one of Cambridge's most desirable residential roads, this brand-new detached home offers over 2,250 sq ft of energy-efficient, contemporary family living with views over Nightingale Recreation Ground.

The accommodation is arranged across three floors and includes a bright entrance hall, a separate front sitting room, and a superb open-plan kitchen/dining/living space with quartz worktops, Bosch appliances, a central island and a roof lantern.

Full-width bi-fold doors open onto the south-facing landscaped garden, with a cloakroom and useful storage completing the ground floor.

The first floor features a generous principal bedroom suite with dressing room and en-suite, along with a further double bedroom and the family bathroom.

Two additional double bedrooms and a modern shower room occupy the second floor.

Outside, the south-facing garden includes a porcelain patio, lawned area, mature trees and a composite storage shed.

To the front, a block-paved driveway provides parking for several vehicles and an EV charging point.

The specification includes underfloor heating to the ground floor, premium internal finishes, porcelain-tiled bathrooms, Cat6 cabling, LED lighting and a full range of integrated Bosch appliances, along with a 10-year warranty.

Nightingale Avenue offers a peaceful setting with direct access to local green space, while being ideally placed for Addenbrooke's Hospital, the Biomedical Campus, Cambridge station, the city centre and a selection of highly regarded schools.

A BRAND NEW FOUR BEDROOM DETACHED HOME OVERLOOKING NIGHTINGALE RECREATION GROUND, OFFERING SPACIOUS, MODERN FAMILY LIVING. WELL LOCATED FOR ADDENBROOKE'S, THE BIOMEDICAL CAMPUS & CAMBRIDGE STATION



AMENITIES

- Prime residential location with park views
- Brand new four-bedroom detached home
- Spacious open plan kitchen/living/dining space
- Roof lantern and bifold doors to south facing garden
- High spec kitchen with integrated Bosch appliances
- Separate sitting room
- Principal suite with dressing room and ensuite
- Two further bathrooms across three floors
- Landscaped garden with patio and lawn
- Driveway parking and EV charging point

TENURE Freehold

LOCAL AUTHORITY Cambridge City Council

EPC BAND B

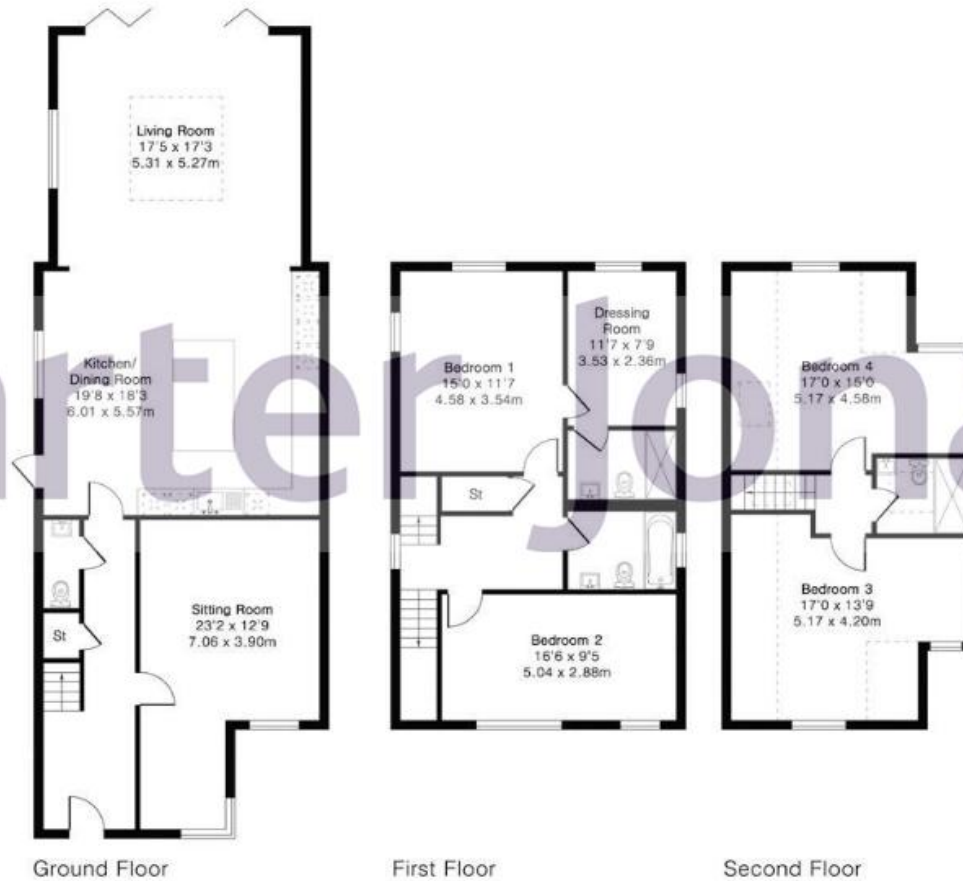


Approximate Gross Internal Area 2259 sq ft - 210 sq m

Ground Floor Area 1076 sq ft – 100 sq m

First Floor Area 661 sq ft – 61 sq m

Second Floor Area 522 sq ft – 49 sq m



Cambridge New Homes 01223 403330

newhomes@carterjonas.co.uk
The Marque, 141 Hills Road, Cambridge, CB2 8RJ

carterjonas.co.uk
Offices throughout the UK

IMPORTANT INFORMATION

These particulars are for general information purposes only and do not represent an offer of contract or part of one. Carter Jonas has made every attempt to ensure that the particulars and other information provided are as accurate as possible and are not intended to amount to advice on which you should rely as being factually accurate. You should not assume that the property has all necessary planning, building regulations or other consents and Carter Jonas have not tested any services, facilities or equipment. Any measurements and distances given are approximate only. Purchasers must satisfy themselves of all of the aforementioned by independent inspection or otherwise. Although we make reasonable efforts to update our information, neither Carter Jonas LLP nor anyone in its employment or acting on its behalf makes any representations warranties or guarantees, whether express or implied, in relation to the property, or that the content in these particulars is accurate, complete or up to date. Our images only represent part of the property as it appeared at the time they were taken. If you require further information please contact us.