



PALACE YARD MEWS, BATH, BA1

£1,700 per month*

Carter Jonas

FLAT 3 WALK, PALACE YARD MEWS, BATH, BA1 2NH

A newly renovated, top floor apartment, located in central Bath.

- Open plan living/kitchen
- Two double bedrooms
- Newly renovated
- One of three apartments

THE PROPERTY

A newly renovated, top floor apartment, located in central Bath.

This property is one of three desirable, refurbished, apartments, on a quiet side street, in the bustling city of Bath.

The accommodation offers open plan living room/kitchen with integral appliances of Oven with hob, dishwasher, fridge/freezer and washer dryer. There are two double bedrooms one with en suite shower and a further bathroom with bath and shower over.

Available for an initial 12 month tenancy.

EPC Rating B. Council Tax Band (waiting to be assessed - please see Bath & North East Somerset website for current cost)

Mains electric, and mains water.

Parking: Please note that there is no parking permits available for this property.

Internet & Mobile: Further information on availability and speeds can be found on the Ofcom website.

At a rent of £1700.00 per calendar month:

Holding deposit of 1 week's rent £403.84 (deducted from first month's rent)

Security deposit of 5 weeks rent £2019.23



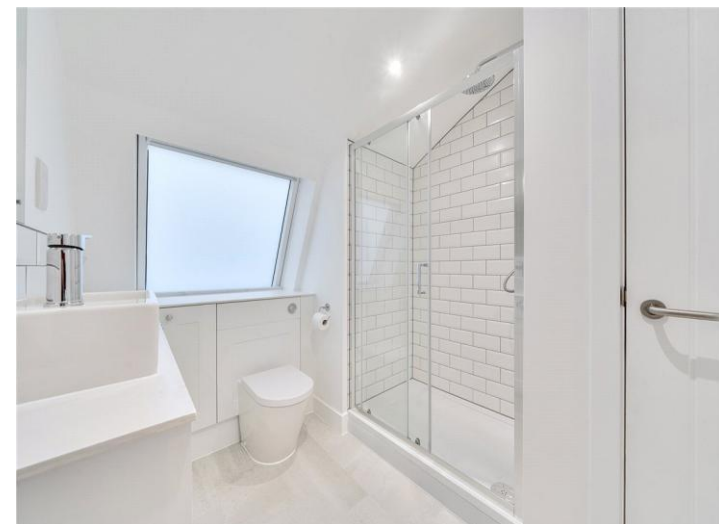
ADDITIONAL INFORMATION

Offers Available for a minimum term of 12 months longer terms will be considered

Viewing Strictly by appointment

Local Authority - Council Tax Band - waiting to be assessed

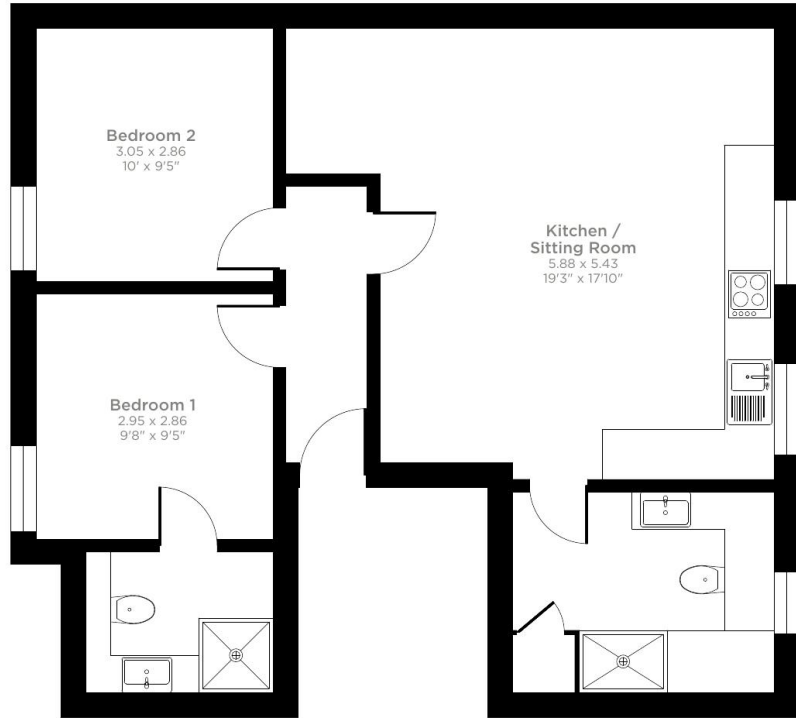
Directions



Palace Yard Mews, Bath, BA1

Approximate Area = 668 sq ft / 62 sq m

For identification only - Not to scale



Second Floor



Floor plan produced in accordance with RICS Property Measurement 2nd Edition, Incorporating International Property Measurement Standards (IPMS2 Residential). © nchecon 2026. Produced for Carter Jonas. REF: 1402731

Score	Energy rating	Current	Potential
92+	A		
81-91	B	← B	← B
69-80	C		
55-68	D		
39-54	E		
21-38	F		
1-20	G		

T: 01225 747250
 5-6 Wood Street, Bath, Somerset, BA1 2JQ
 E: bath.enquiries@carterjonas.co.uk



Exclusive UK affiliate of

CHRISTIE'S
 INTERNATIONAL REAL ESTATE

Classification L2 - Business Data

IMPORTANT INFORMATION

These particulars are for general information purposes only and do not represent an offer or contract or part of one. Carter Jonas or anyone in their employment has made every attempt to ensure that the particulars and other information provided are as accurate as possible and they are not intended to amount to advice on which you should rely as being factually accurate. Full information which may be relevant to your decision regarding the property can be found on the property listing on carterjonas.co.uk or a separately available material information sheet, and we would advise you to confirm the details of any material information prior to any offer being submitted. You should not assume that the property has all necessary planning, building regulations or other consents and Carter Jonas has not tested any services, facilities, or equipment. Any measurements and distances given are approximate only. Where Carter Jonas has been provided with a floorplan by a third party, we cannot guarantee that the floorplan has been measured in accordance with IPMS. Purchasers or prospective tenants must satisfy themselves of all of the aforementioned by independent inspection or otherwise. Our images only represent part of the property as it appeared at the time they were taken and do not represent the furnishings included; these are confirmed in a separate inventory. If you require further information, please contact us. *Administration fees may apply depending on tenancy type. Please contact your local branch for this information.