



ENBORNE STREET, ENBORNE, RG20
£2950.00 per month*

Carter Jonas

Stunning detached barn conversion offering distant views over farmland.

Newly converted to an exceptional standard throughout, set in a small courtyard.

Double height, light filled living space incorporating a quality fitted kitchen with inbuilt appliances, breakfast bar, dining area, living area and bi fold doors to the rear patio. Utility room with white goods and cloakroom.

Ground floor principal bedroom with dressing area and ensuite shower room. Split level stairs leading to the mezzanine area which gives access to two further bedrooms and a shower room.

Enclosed patio to the rear and further southwest facing terrace to the front. Parking for 2 cars and EV charger.

Available for an initial 12-month tenancy.

Service charge applicable for the communal areas, cost TBC.

EPC Rating C. Council Tax Band TBC (West Berks Government website for current cost)

Mains electric and water. Septic tank drainage and air source heat pump.

Internet & Mobile: Gigaclear to the property, further information on availability and speeds can be found on the Ofcom website.

At a rent of £2950.00 per calendar month:
Holding deposit of 1 week's rent £680.00
Security deposit of 5 weeks rent £3403.00



ADDITIONAL INFORMATION

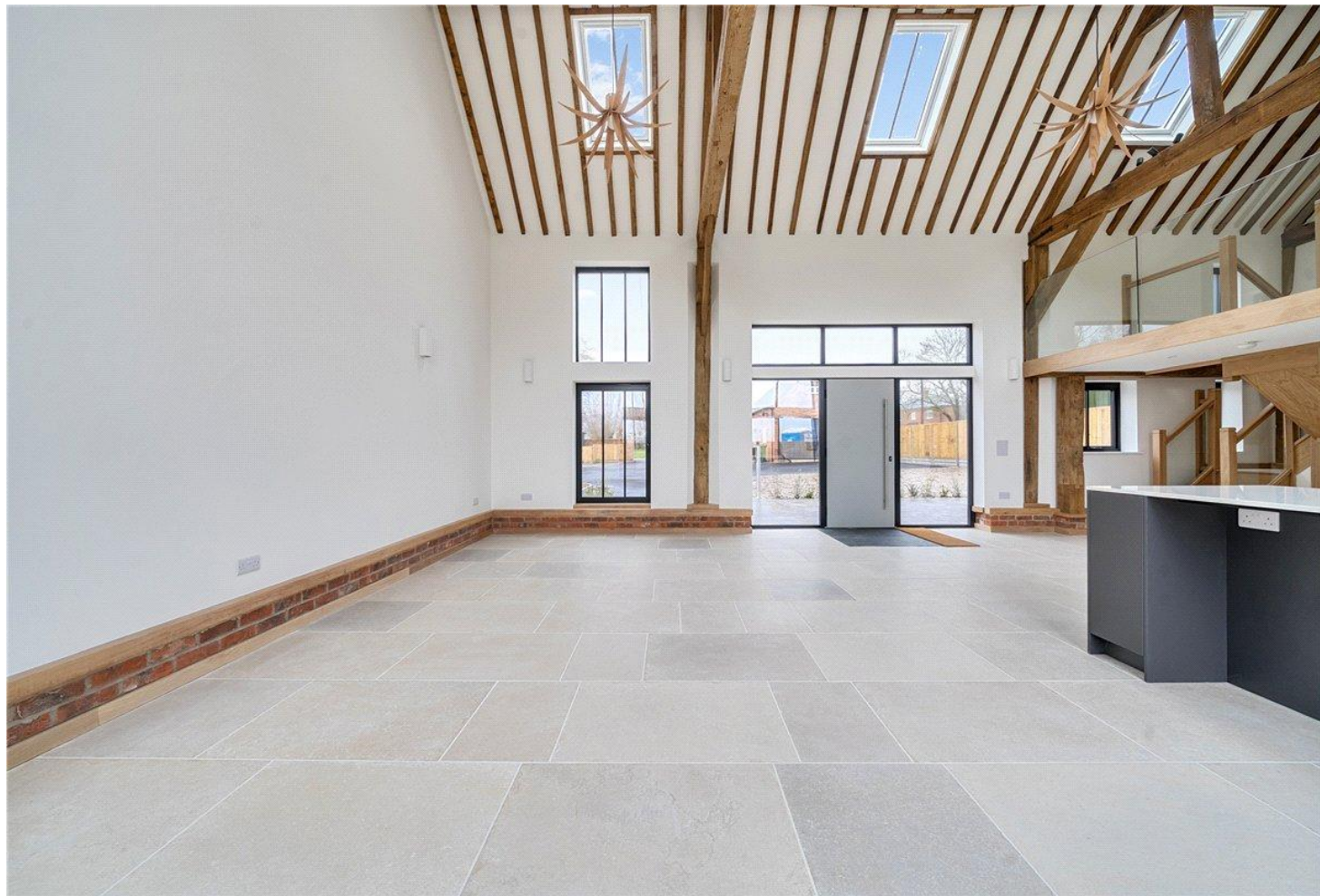
Offers Available for a minimum term of 12 months longer terms will be considered

Viewing Strictly by appointment

Local Authority Council Tax Band TBC

Score	Energy rating	Current	Potential
92+	A		
81-91	B		
69-80	C		
55-68	D		
39-54	E		
21-38	F		
1-20	G		

		71 C	81 B
--	--	------	------



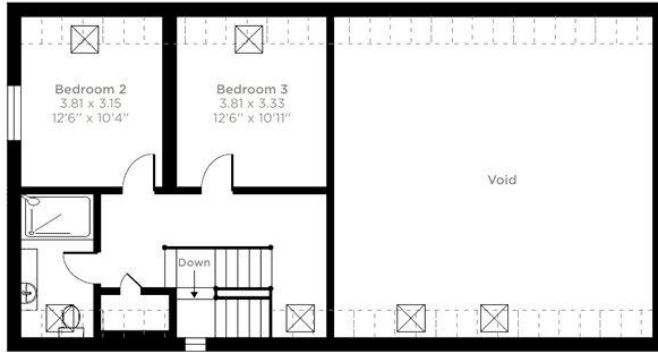
Enborne Street, Enborne, Newbury, RG20

Approximate Area = 1451 sq ft / 134.7 sq m

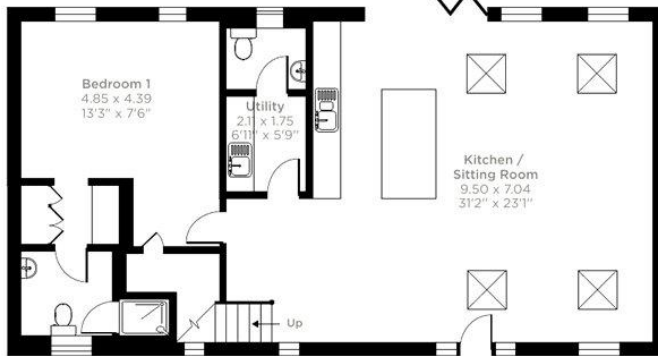
Limited Use Area(s) = 168 sq ft / 15.6 sq m

Total = 1619 sq ft / 150.4 sq m

For identification only - Not to scale



First Floor



Ground Floor

Denotes restricted head height



Floor plan produced in accordance with RICS Property Measurement 2nd Edition, Incorporating International Property Measurement Standards (IPMS2 Residential). © nrichcom 2026. Produced for Carter Jonas. REF: 1405566

T: 01635 263020

51 Northbrook Street, Newbury, Berkshire, RG14 1DT

E: newbury@carterjonas.co.uk

A member of



Exclusive UK affiliate of

CHRISTIE'S
INTERNATIONAL REAL ESTATE

Classification L2 - Business Data

IMPORTANT INFORMATION

These particulars are for general information purposes only and do not represent an offer or contract or part of one. Carter Jonas or anyone in their employment has made every attempt to ensure that the particulars and other information provided are as accurate as possible and they are not intended to amount to advice on which you should rely as being factually accurate. Full information which may be relevant to your decision regarding the property can be found on the property listing on carterjonas.co.uk or a separately available material information sheet, and we would advise you to confirm the details of any material information prior to any offer being submitted. You should not assume that the property has all necessary planning, building regulations or other consents and Carter Jonas has not tested any services, facilities, or equipment. Any measurements and distances given are approximate only. Where Carter Jonas has been provided with a floorplan by a third party, we cannot guarantee that the floorplan has been measured in accordance with IPMS. Purchasers or prospective tenants must satisfy themselves of all of the aforementioned by independent inspection or otherwise. Our images only represent part of the property as it appeared at the time they were taken and do not represent the furnishings included; these are confirmed in a separate inventory. If you require further information, please contact us. *Administration fees may apply depending on tenancy type. Please contact your local branch for this information.