



**DUKE STREET, MAYFAIR, W1K**

£3,200 per week\*

**Carter Jonas**

---

# DUKE STREET, MAYFAIR, LONDON, W1K

A two-bedroom apartment of approximately 1,310 square feet.

- Furnished
- 2 Bedrooms
- 2 En suite bathrooms
- Open plan kitchen / reception
- 24hr Concierge
- AC throughout
- Lift access

## THE PROPERTY

Situated over the fourth and fifth floors of this attractive refurbished period building ideally located within walking distances of Hyde Park, shopping facilities and transport links, the apartment features the latest in technology, bespoke interior design.

Mayfair is London's most fashionable destination. With London's finest buildings, largest concentration of luxury hotels, best restaurants, bars, shopping, open spaces and hidden treasures all nestled together in a beautiful village setting.

Council tax Band H

Nearest Tube: Bond Street / Marble Arch

NHA

The deposit will be £19,200 at a rental value of £3,200 (asking price)

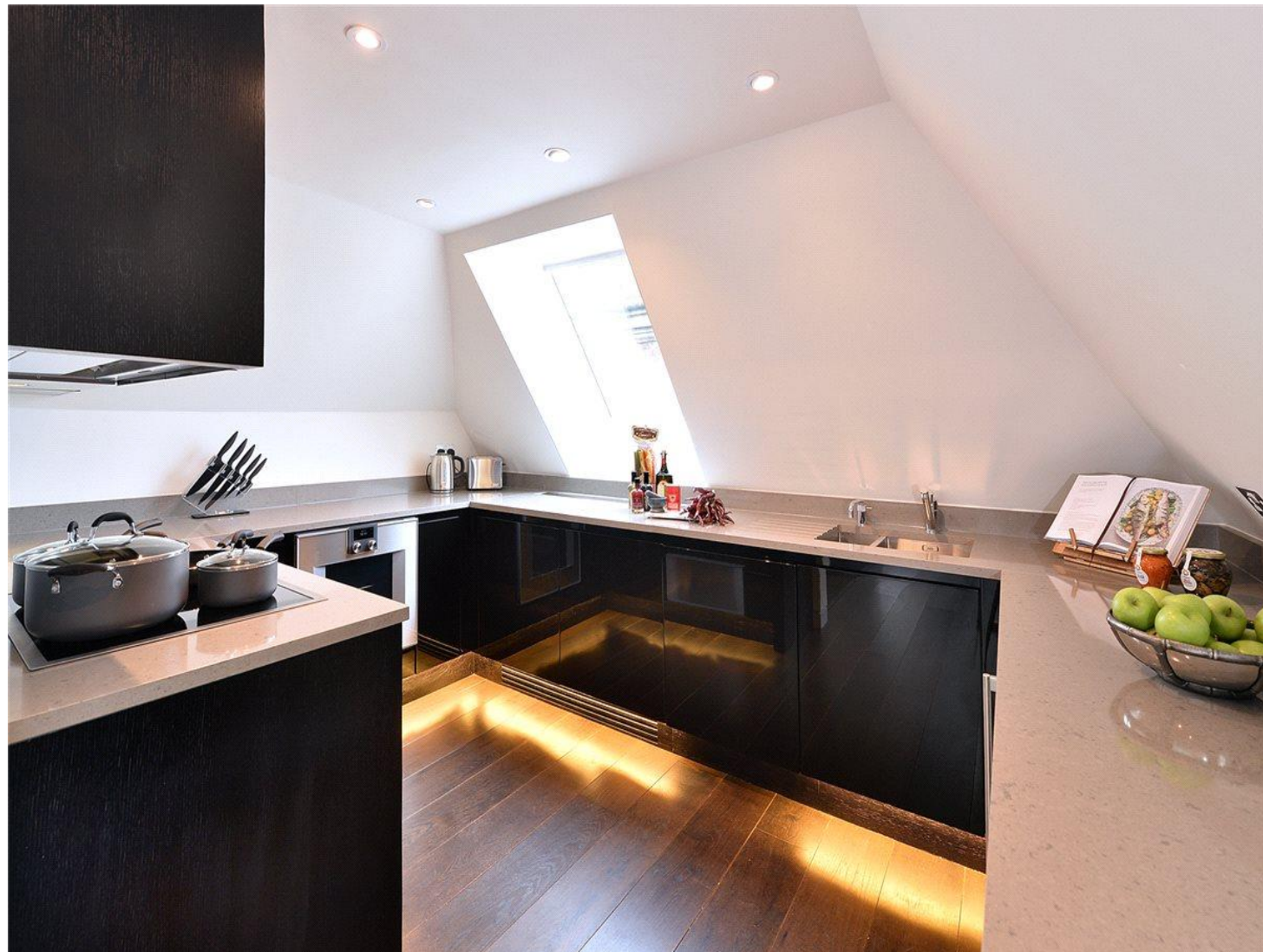
Holding deposit = 1 weeks rent of £3,200

Deposit is 6 weeks rent (£3,200 pw = £19,200 deposit)

Boiler and underfloor heating

Mains gas and electric

Copper broadband



## ADDITIONAL INFORMATION

Viewing Strictly by appointment

Local Authority Westminster City Council - Council Tax Band H

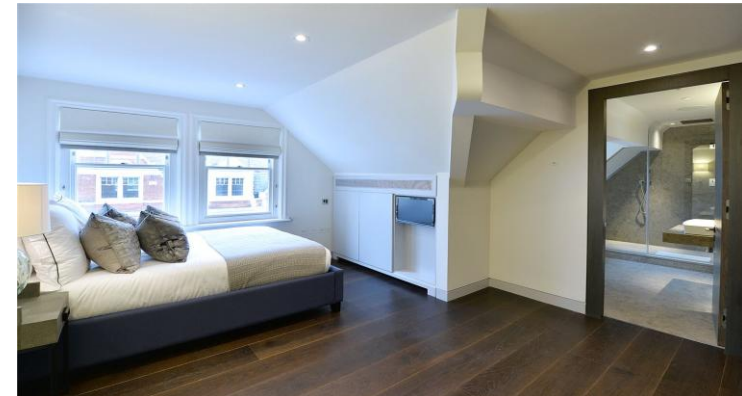
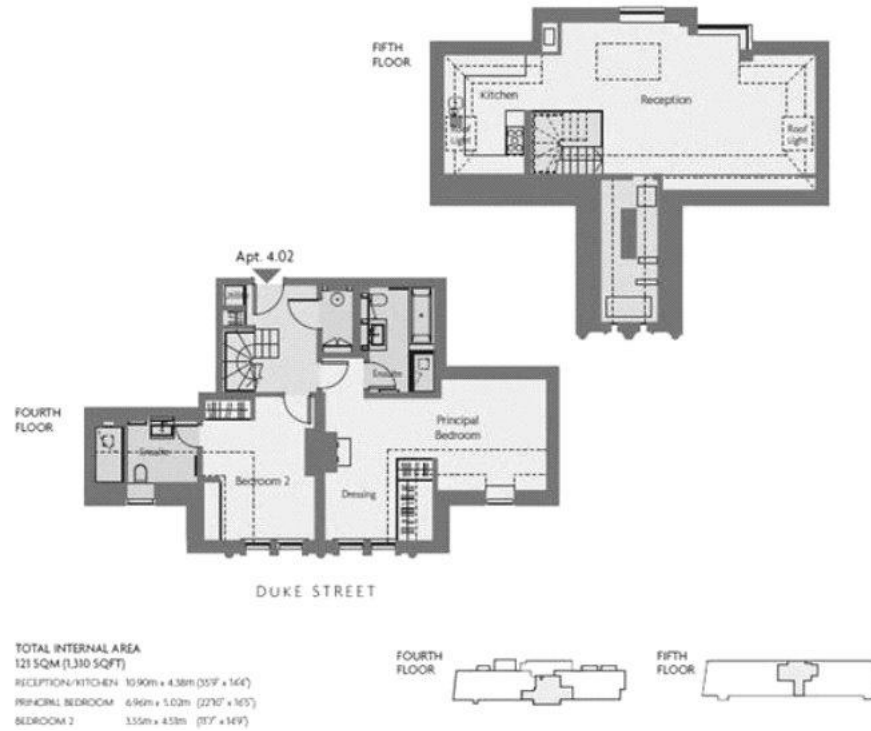
Directions

Score	Energy rating	Current	Potential
92+	A		
81-91	B		
69-80	C	75 C	78 C
55-68	D		
39-54	E		
21-38	F		
1-20	G		



## CONTEMPORARY APARTMENT 4.02

2 BEDROOM DUPLEX APARTMENT - FOURTH/FIFTH FLOORS



T: 020 7493 0676

18 Davies Street, Mayfair, London, W1K 3DS

E: [mayfair.lettings@carterjonas.co.uk](mailto:mayfair.lettings@carterjonas.co.uk)



Exclusive UK affiliate of

**CHRISTIE'S**  
INTERNATIONAL REAL ESTATE

Classification L2 - Business Data

### IMPORTANT INFORMATION

These particulars are for general information purposes only and do not represent an offer or contract or part of one. Carter Jonas or anyone in their employment has made every attempt to ensure that the particulars and other information provided are as accurate as possible and they are not intended to amount to advice on which you should rely as being factually accurate. Full information which may be relevant to your decision regarding the property can be found on the property listing on [carterjonas.co.uk](http://carterjonas.co.uk) or a separately available material information sheet, and we would advise you to confirm the details of any material information prior to any offer being submitted. You should not assume that the property has all necessary planning, building regulations or other consents and Carter Jonas has not tested any services, facilities, or equipment. Any measurements and distances given are approximate only. Where Carter Jonas has been provided with a floorplan by a third party, we cannot guarantee that the floorplan has been measured in accordance with IPMS. Purchasers or prospective tenants must satisfy themselves of all of the aforementioned by independent inspection or otherwise. Our images only represent part of the property as it appeared at the time they were taken and do not represent the furnishings included; these are confirmed in a separate inventory. If you require further information, please contact us. \*Administration fees may apply depending on tenancy type. Please contact your local branch for this information.