



**TUFTON STREET, WESTMINSTER, SW1P**  
£2,884.61 per week\*

**Carter Jonas**

---

# TUFTON STREET, WESTMINSTER, LONDON, SW1P

A five-bedroom house of approximately 2,802 square feet.

- Furnished
- 5 Bedrooms
- 2 Reception Room
- 1 Dining Room
- 1 Kitchen / diner
- 2 Bathrooms with walk-in shower
- Guest WC
- Garden
- Terrace

## THE PROPERTY

This charming, refurbished house is set over four floors of a residential street within walking distance of the Houses of Parliament, the River Thames, shopping facilities of Victoria Street and transport links.

The house is arranged over four floors, is well-presented with generous accommodation and has been interior designed throughout to make an ideal family home. It also benefits from a patio garden and a roof terrace.

Westminster lies on the north bank of the River Thames. It has its own University and shopping street alongside a substantial residential element which is home to many Members of Parliament, political journalists and students. Its core encompasses the famous Historic landmarks of the Houses of Parliament and Westminster Abbey and has been the seat of the Government of England for almost a thousand years. A more recent landmark and tourist attraction is the London Eye from where fantastic views of the City can be seen.

NHA

The deposit will be £17,307.66 at a rental value of £2,884.61 (asking price).

Holding deposit = 1 week's rent of £2,884.61

Rent is not payable weekly

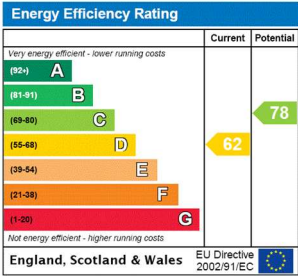
Deposit is 6 weeks rent (£2,884.61 pw = £17,307.66 deposit)





ADDITIONAL INFORMATION

Offers	Available for a minimum term of 12 months longer terms will be considered
Viewing	Strictly by appointment
Local Authority	Westminster County Council - Council Tax Band H
	Minimum term 12 months
	Council Tax Band H
	Ultrafast Fibre to the Premises broadband and mobile coverage available
	Nearest Tube: Victoria / St James's Park



### 57 Turfton Street SW1P

Gross internal area (approx)

250.74 sq m (2,699 sq ft)

(Including Eaves Storage)

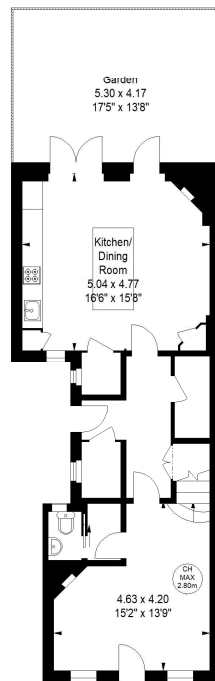
Eaves Storage

3.44 sq m / 37 sq ft

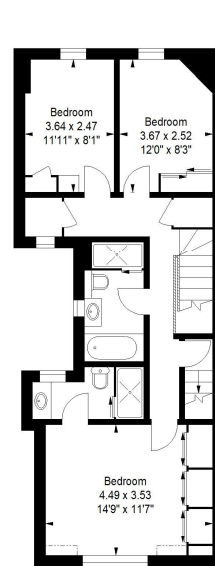
For Identification purposes Only. Not To Scale.

All Calculations include Any/All Areas Under 1.5m Head Height.

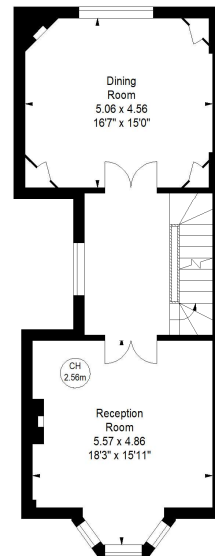
\* As Defined by RICS - Code of Measuring Practice.



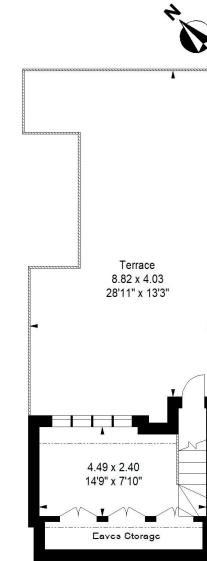
Ground Floor



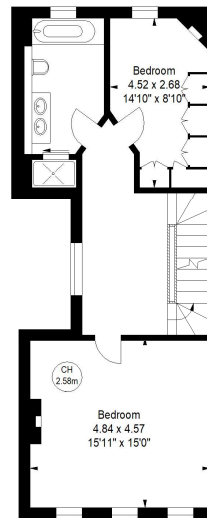
Third Floor



First Floor



Fourth Floor



Second Floor



T: 020 7493 0676

18 Davies Street, Mayfair, London, W1K 3DS

E: [mayfair@carterjonas.co.uk](mailto:mayfair@carterjonas.co.uk)

A member of



Exclusive UK affiliate of

**CHRISTIE'S**  
INTERNATIONAL REAL ESTATE

Classification L2 - Business Data

### IMPORTANT INFORMATION

These particulars are for general information purposes only and do not represent an offer or contract or part of one. Carter Jonas or anyone in their employment has made every attempt to ensure that the particulars and other information provided are as accurate as possible and they are not intended to amount to advice on which you should rely as being factually accurate. Full information which may be relevant to your decision regarding the property can be found on the property listing on [carterjonas.co.uk](http://carterjonas.co.uk) or a separately available material information sheet, and we would advise you to confirm the details of any material information prior to any offer being submitted. You should not assume that the property has all necessary planning, building regulations or other consents and Carter Jonas has not tested any services, facilities, or equipment. Any measurements and distances given are approximate only. Where Carter Jonas has been provided with a floorplan by a third party, we cannot guarantee that the floorplan has been measured in accordance with IPMS. Purchasers or prospective tenants must satisfy themselves of all of the aforementioned by independent inspection or otherwise. Our images only represent part of the property as it appeared at the time they were taken and do not represent the furnishings included; these are confirmed in a separate inventory. If you require further information, please contact us. \*Administration fees may apply depending on tenancy type. Please contact your local branch for this information.