



FARM LANE, LONDON, SW6
£6,500 per month*

Carter Jonas

FARM LANE, LONDON, SW6

Spacious five bedroom home with open plan reception and garden, in close proximity to Fulham Broadway.

- Five double bedrooms
- Three bathrooms
- Professional sharers considered
- Spacious garden
- In close proximity to Fulham Broadway
- Furnished or Unfurnished

THE PROPERTY

On the ground floor, you'll find a generous double reception room featuring two elegant fireplaces and a convenient side door opening onto the rear garden. Towards the back, the property boasts a stylish open-plan kitchen and dining area – perfect for entertaining – with additional access to the garden. A guest WC completes this level.

The first floor offers three well-proportioned bedrooms, each with fitted wardrobes. The principal bedroom benefits from an en suite, while the remaining rooms are served by a family bathroom.

The top floor provides two further bedrooms, a bathroom, and useful eaves storage.

LOCATION

Farm Lane enjoys a vibrant community atmosphere and excellent local amenities, with Fulham Broadway Underground Station (District Line) just a short stroll away. EPC rating D



Holding deposit: 1 week's rent

Security deposit: 6 weeks' rent

Pets considered

5 - 6 sharers considered

Parking: on street via a permit

Council tax: Band G

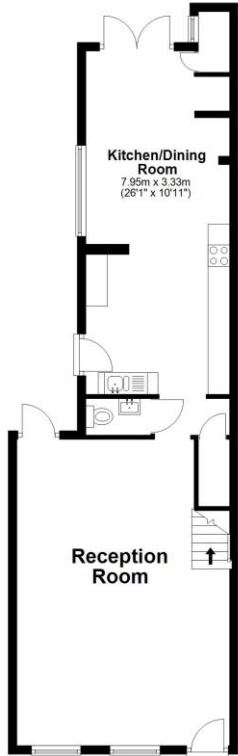
ADDITIONAL INFORMATION

Offers	Available for a minimum term of 12 months longer terms will be considered
Viewing	Strictly by appointment
Local Authority	Hammersmith and Fulham - Council Tax Band G





Ground Floor
Approx. 65.6 sq. metres (705.7 sq. feet)



First Floor
Approx. 66.1 sq. metres (711.9 sq. feet)



Second Floor
Approx. 50.9 sq. metres (548.4 sq. feet)

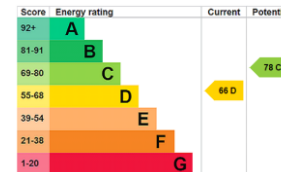


Total area: approx. 182.6 sq. metres (1966.0 sq. feet)

All measurements have been taken as a guide to prospective buyers only and are not precise. This plan is for illustrative purposes only and no responsibility for any error, omission or misstatement. The services, systems and appliances shown have not been tested and no guarantee as to their operability or efficiency can be given. Measurements may have been taken from the widest area and may include wardrobe/cupboard space. No guarantee is given to any measurements including total areas. Buyers are advised to take their own measurements.

© @modaphoto.uk | www.modaphoto.co.uk
Plan produced using PlanUp

Farm Ln



T: 020 7751 8898

361 Fulham Palace Road, London, SW6 6TA

E: fulhamlettings@carterjonas.co.uk

A member of



Exclusive UK affiliate of

CHRISTIE'S
INTERNATIONAL REAL ESTATE

Classification L2 - Business Data

IMPORTANT INFORMATION

These particulars are for general information purposes only and do not represent an offer or contract or part of one. Carter Jonas or anyone in their employment has made every attempt to ensure that the particulars and other information provided are as accurate as possible and they are not intended to amount to advice on which you should rely as being factually accurate. Full information which may be relevant to your decision regarding the property can be found on the property listing on carterjonas.co.uk or a separately available material information sheet, and we would advise you to confirm the details of any material information prior to any offer being submitted. You should not assume that the property has all necessary planning, building regulations or other consents and Carter Jonas has not tested any services, facilities, or equipment. Any measurements and distances given are approximate only. Where Carter Jonas has been provided with a floorplan by a third party, we cannot guarantee that the floorplan has been measured in accordance with IPMS. Purchasers or prospective tenants must satisfy themselves of all of the aforementioned by independent inspection or otherwise. Our images only represent part of the property as it appeared at the time they were taken and do not represent the furnishings included; these are confirmed in a separate inventory. If you require further information, please contact us. *Administration fees may apply depending on tenancy type. Please contact your local branch for this information.